



Video Surveillance & Real-Time Monitoring



GSA Contract Holder
GS-35F-0470Y

Focus • Agility • Competitiveness



Video Surveillance and Real-Time Monitoring



Introduction

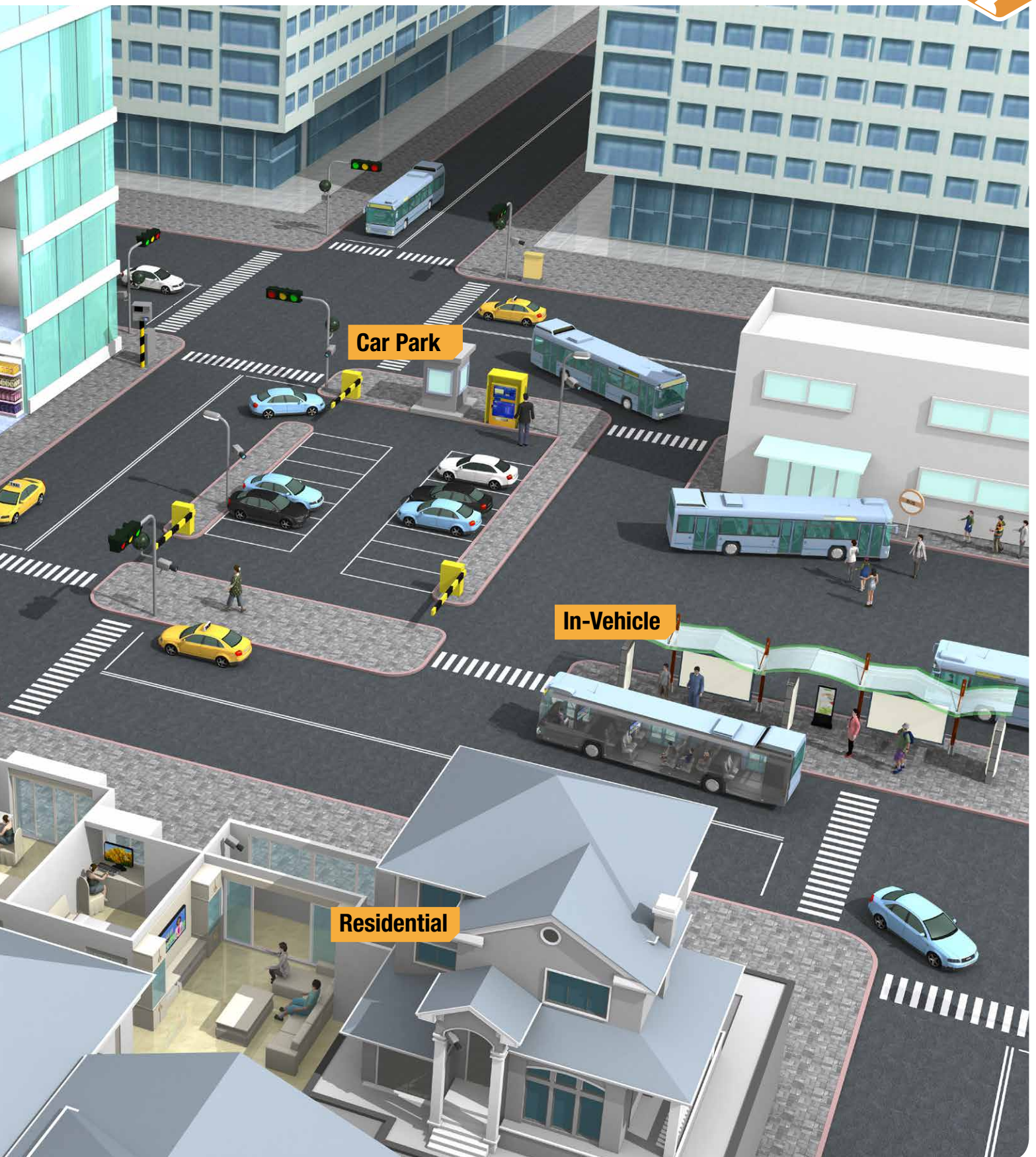
The evolution of Intelligent Devices and how they will impact our lives has become one of the primary topics of discussion in the world of technology. As the standards and technologies mature, we see more and more applications become candidates for an "intelligent" facelift, while existing applications build on their strengths for more sophisticated features that were once deemed "impossible" to accomplish.

With the rapid development of information technology, the collection of and access to a large volume of video data emerges, and with it, comes the demand for a new generation of hardware solutions that provide immediate access to that information.

These devices not only incorporate the latest technological trends (eg. HD video processing and analytics), but can also offer complimentary functionality, such as hot-swappable hard disks, all while functioning in harsh environments. Such devices offer a complete and comprehensive solution suitable for adoption in Banking, Commercial and Residential Security sectors, as well as in Traffic Safety, Parking Garages, and in-vehicle applications.

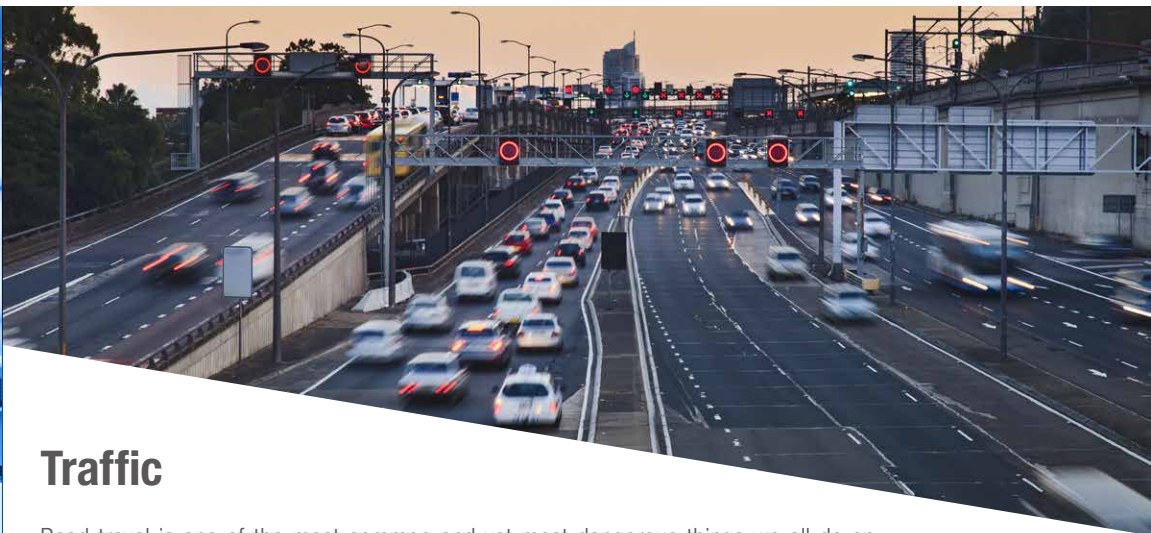
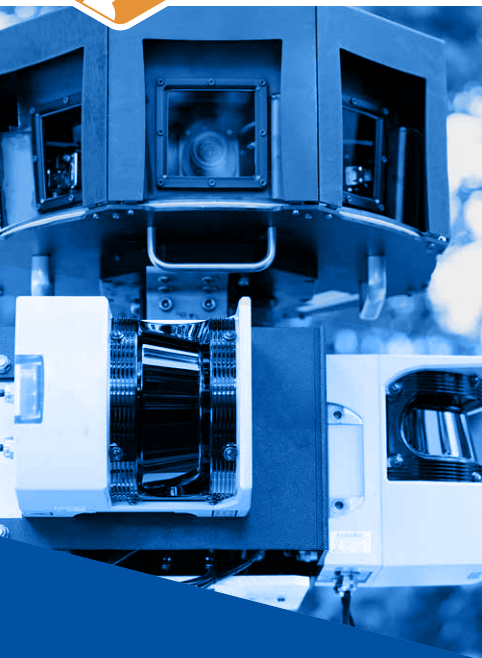


Video Surveillance and Real-Time Monitoring





Traffic



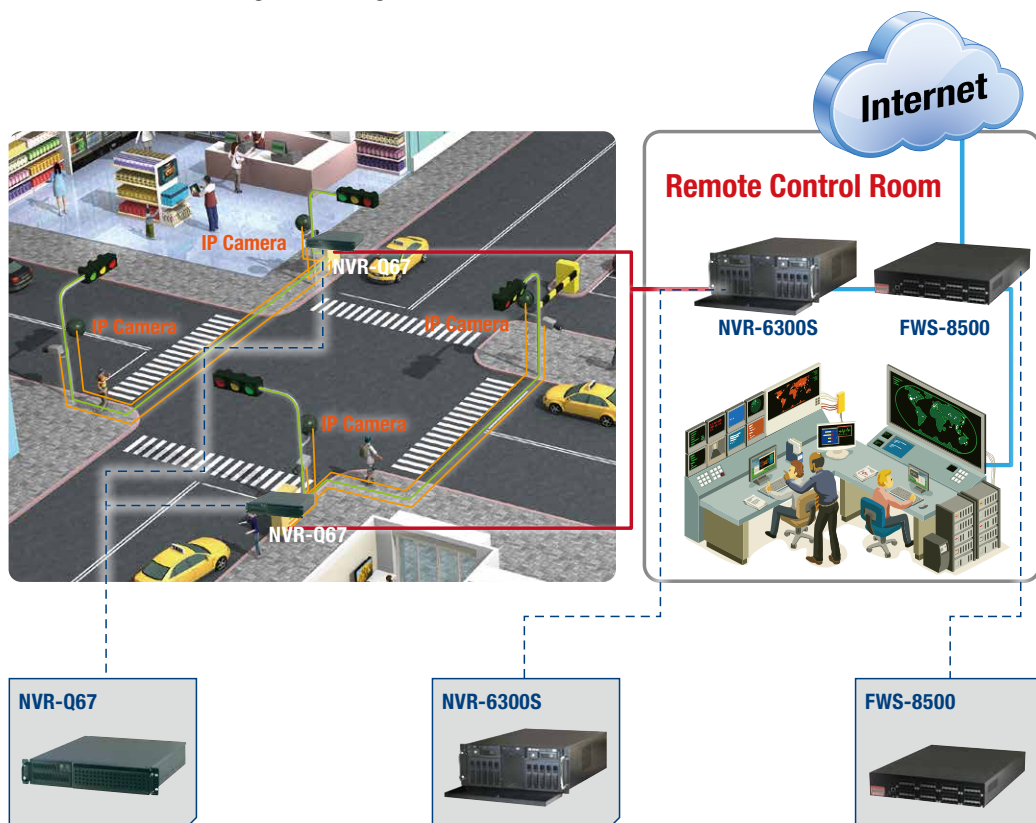
Traffic

Road travel is one of the most common and yet most dangerous things we all do on a daily basis. To reduce the inherent risk in this activity, video surveillance systems can be deployed along roads, at major junctions, and at pedestrian crossings. Video surveillance enables enhanced response to emergency conditions, enhances crime prevention capabilities and improves investigative activities. AAEON has developed a comprehensive selection of cost effective solutions appropriate for various uses in a wide range of locations.

AAEON's NVR-Q67 Network Video Recorder is suitable for smaller locations like pedestrian crossings and road junctions given its video recording and network capabilities and relatively small size. Its larger and more powerful counterparts, the NVR-6300S and FWS-8500, can be used in main control centers where higher performance and larger storage capacity, allow for more data feeds. HD video streams, from many sources (NVR-Q67) can be simultaneously captured and analyzed for traffic conditions, vehicle identification, weather-related incidents, and dangerous driving behaviors.

Product List

- FWS-8500
- NVR-Q67
- NVR-6300S





Car Park

Increased car ownership and technologically advanced vehicles make car park security ever-more important. From the multi-story parking complex to simple paved parking lots, AAEON offers car parks affordable network video recording solutions to keep an around the clock watch over their patron's assets.

For smaller lots, the NVR-Q67 is an affordable solution supporting up to 6 internal drives while the slightly larger NVR-Q67S offers up to 8 hot swappable drive capacity for both small and medium lots. Bigger parking facilities are supported by the NVR-6300S which offers up to 10 hot-swappable, RAID-enabled HDDs as well as data processing capabilities.

Securing the network on which the NVR is attached is as important as the physical security of the car park. AAEON provides network security solutions such as the FWS-7810 Network Appliance as the firewall system in control centers equipped with the NVRs.

Product List

- NVR-6300S
- NVR-Q67
- NVR-Q67S
- FWS-7810



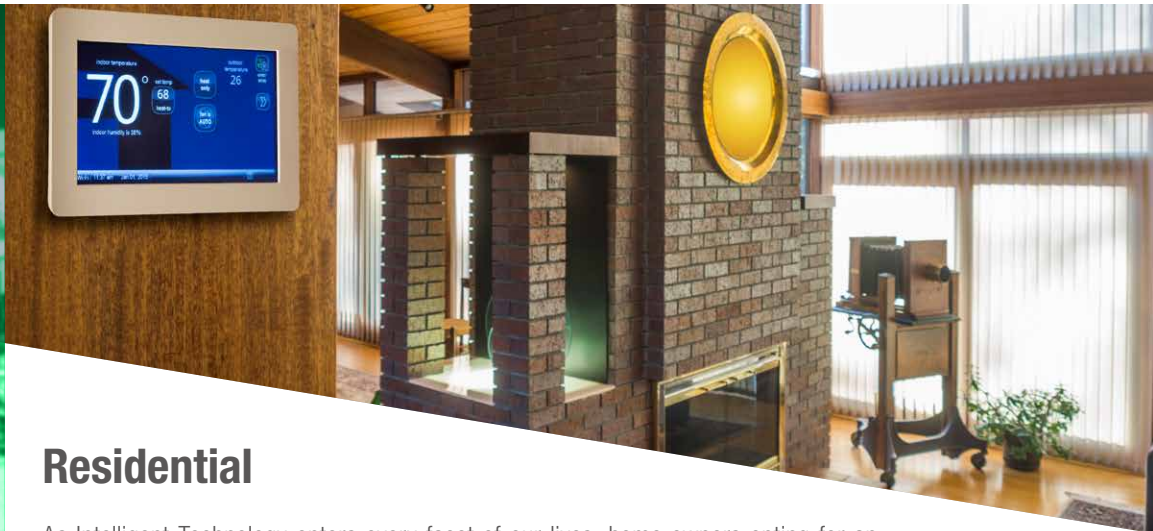


Residential



Product List

- NVR-B75
- NVR-CV
- FWS-2250

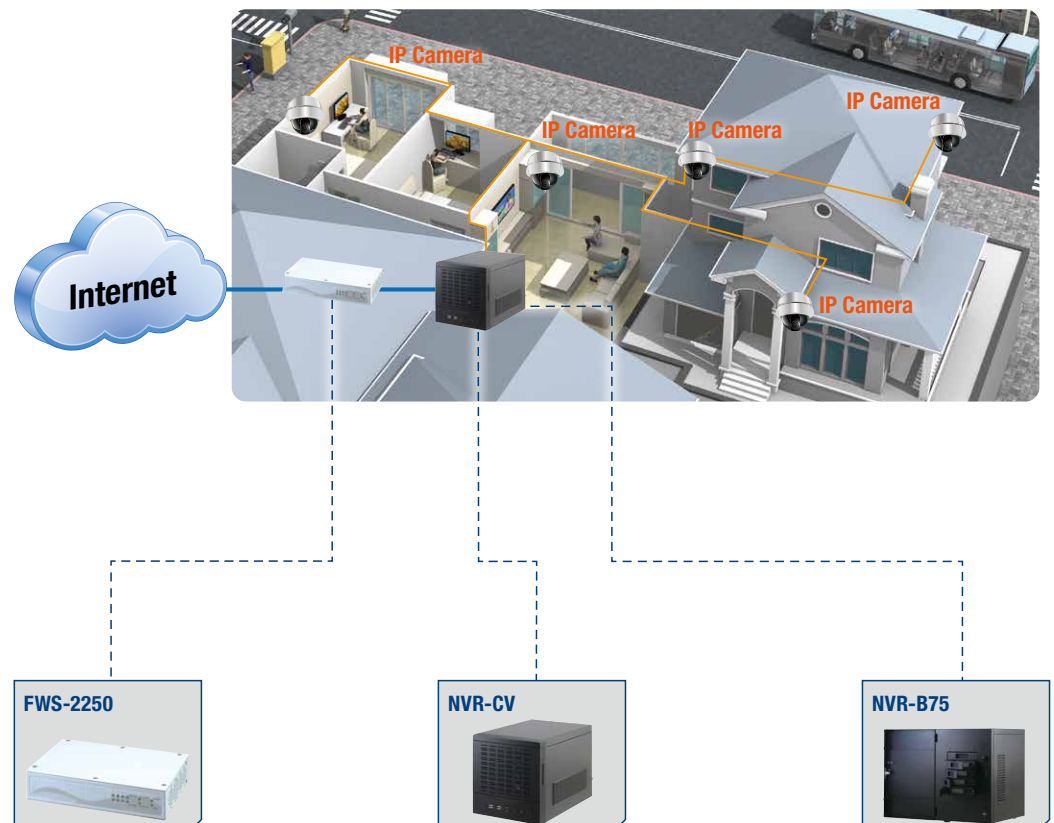


Residential

As Intelligent Technology enters every facet of our lives, home owners opting for an intelligent lifestyle are now faced with the mounting challenge of protecting their family as well as their assets, and doing so affordably.

Depending on the size of the home (and thus the number of devices involved), home security is enhanced by a comprehensive deployment of video surveillance. AAEON's NVR-CV, NVR-B75 Network Video Recorders, and FWS-2250 Network Appliance are designed to be compact enough for usage in the home and are compatible with a multitude of devices, such as IP cameras, sensors, and monitors.

Sensors deployed throughout the home can be monitored around the clock and any abnormal changes in conditions (such as temperature, opening of windows or doors, glass breakages) can be picked up for immediate actions.





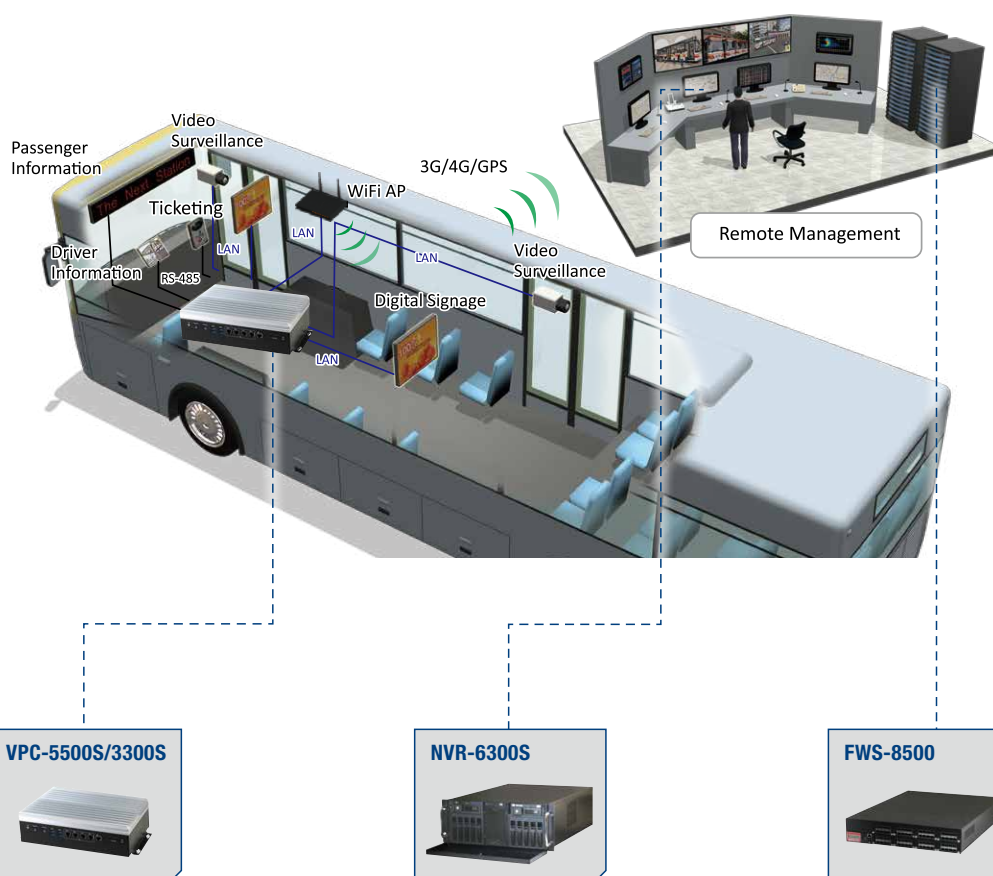
In-Vehicle

In-vehicle video recording is nothing new; however, advances in technology continue to drive the development of systems to incorporate functions of an embedded computer. AAEON's VPC-5500S and VPC-3300S In-Vehicle PC are one of such systems.

Areas in and around a bus can be captured by the onboard cameras while the Vehicle PC's GPS provides real-time positioning for tracking by the control center. In the control room, AAEON's NVR-6300S processes the incoming data from the fleet allowing for real-time, conditions-based decision-making. Bus routing can be adjusted based on analytics of data received from the bus and response to situations such as traffic conditions, mechanical systems failure, or emergency situations can be made remotely and efficiently.

Product List

- VPC-5500S
- VPC-3300S
- NVR-6300S
- FWS-8500



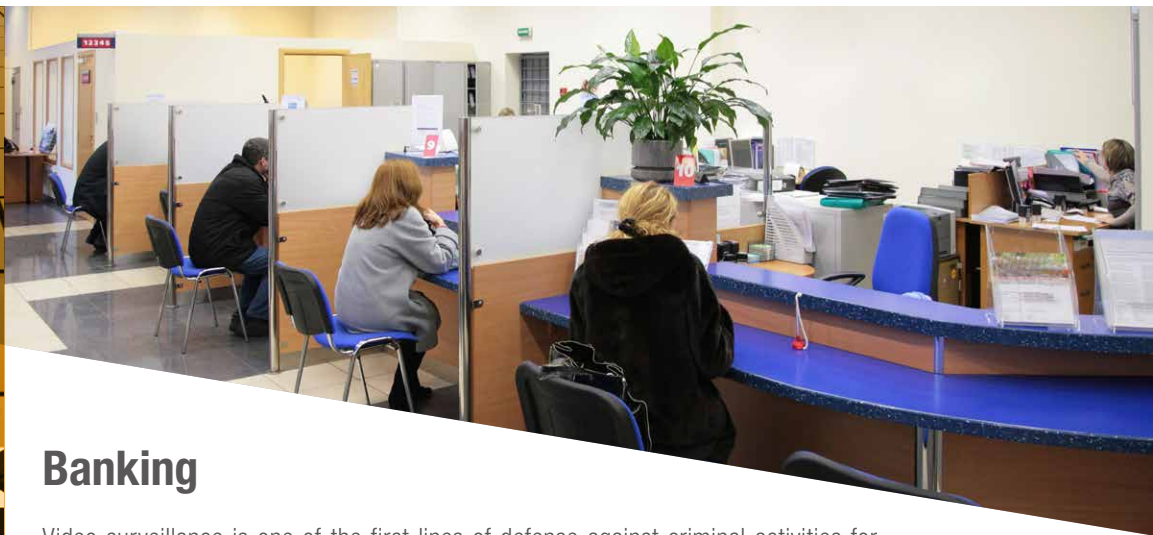


Banking

Bank

Product List

- NVR-6300S
- NVR-Q67S
- FWS-8500
- FWS-7810

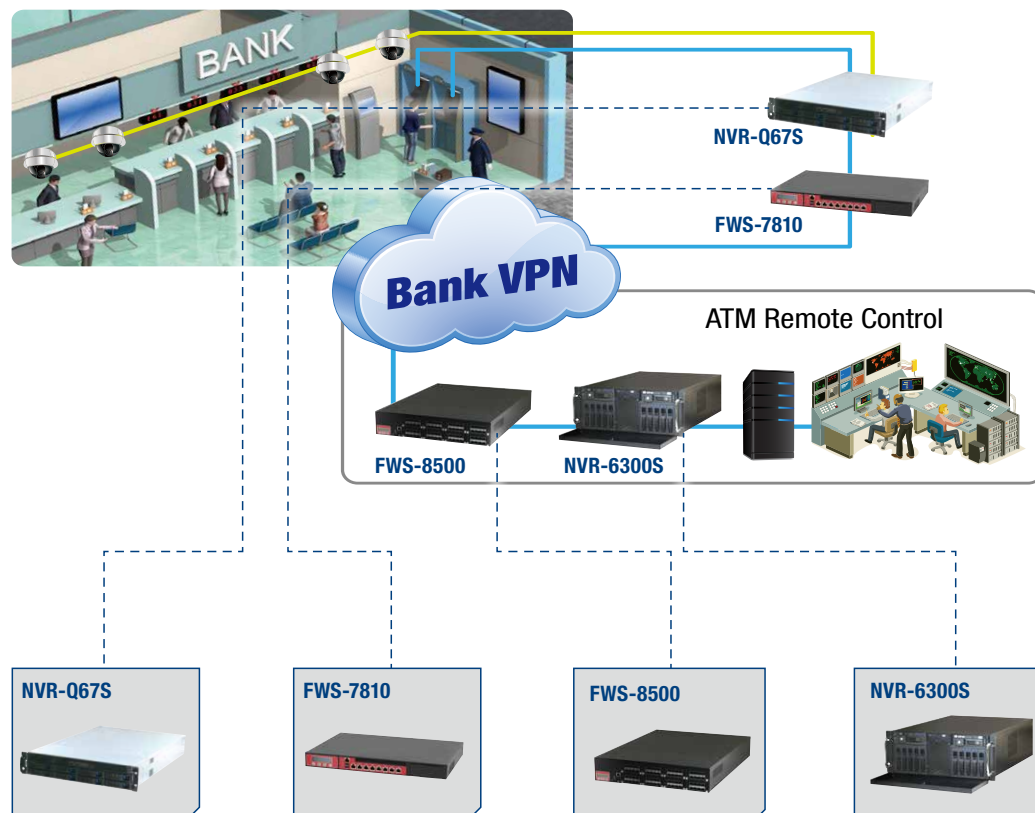


Banking

Video surveillance is one of the first lines of defense against criminal activities for financial institutions. Filling this important role are AAEON's NVR-6300S, NVR-Q67S Network Video Recorders, and FWS-7810, FWS-8500 Network Appliances.

As bank branches vary in both size and service offerings, the NVR-Q67S and FWS-7810 are a good combination for a cost-effective video recording and network security solution. Similarly, bank headquarters, which are usually larger in scale and offer extended services, can be adequately covered with the FWS-7810 and the more powerful NVR-6300S with its ample storage and ability to process data feeds from multiple sources, such as video feeds from cameras in and around the bank's premises.

AAEON's combination of the NVR-6300S and FWS-8500 can be deployed in the ATM control center, where hardware must handle and secure a large data load from all of the bank's ATM machines.



Selection Guide



Model	VPC-5500S	VPC-3300S
System		
Form Factor	In-Vehicle NVR	In-Vehicle NVR
Processor	Intel® Celeron® J1900 Processor	Intel® 4th Gen. Core™ i3/i5/i7 Processor
Chipset	Quad Core SoC	Intel® QM87
Main Memory	Up to 8GB, DDR3L 204-pin SODIMM	Up to 16GB, DDR3L 204-pin SODIMM
Display	VGA x 1, HDMI x 1	VGA x 1, HDMI x 1, DP x 1
Ethernet	10/100/1000Base-TX x 6	10/100/1000Base-TX x 5
PoE Ethernet Port	4 ports	4 ports
RAID support	0/1	0/1
Expansion Slot	Mini-Card x 3 Built-in CAN 2.0B x 1	Mini-Card slot x 3 (for 3G/4G/Wifi Module) Built-in CAN 2.0B x 1
GPS	On board (GPS/GLoS)	On board (GPS/GLoS)
Front I/O Panel	Power Button x 1 Power Input x 1 Remote Power x 1 3G/4G/WIFI LED x 3 SIM slot x 2 HDD LED x 1 CanBus connector x 1 DIO x 1	Power Button x 1 3G/4G/WIFI LED x 3 USB3.0 x 4 SIM slot x 2 LAN (RJ-45) port x 1 PoE LAN x 4
Rear I/O Panel	VGA out x 1, HDMI x 1 LAN (RJ-45) port x 2 PoE LAN x 4 USB2.0 x 2, USB3.0 x 1 Audio Line-out x 1, Mic-In x 1	DC-In power x 1 Remote Power x 1, DIO x 1 DC 12V Output x 1 RS-232 x 2, RS-232/422/485 x 2 VGA out x 1, HDMI x 1, DP x 1 CanBus connector x 1 USB2.0 x 2 Audio Line-out x 1, Mic-In x 1
Environmental		
Operating Temperature	-4°F ~ 158°F (-20°C ~ 70°C)	-4°F ~ 158°F (-20°C ~ 70°C)
Storage Temperature	-40°F ~ 185°F (-40°C ~ 85°C)	-40°F ~ 185°F (-40°C ~ 85°C)
Storage Humidity	10%~80% @40°C, non-condensing	10%~80% @40°C, non-condensing
Vibration/Shock	MIL-STD-810G	MIL-STD-810G
Certification	CE & FCC Class A, eMARK 13	CE & FCC Class A, eMARK 13
Power Requirement		
Power Supply	DC 9-36V, with Ignition Pin	DC 10-35V
Mechanical		
Hot Swappable HDD Tray	—	2.5" HDD x 2 (optional)
Internal System HDD Bay	2.5" HDD x 2	2.5" HDD x 2
Dimension	6.85" x 7.87" x 2.36" (174mm x 200mm x 60mm)	11.34" x 8.27" x 3.3" (288mm x 210mm x 84mm)
Gross Weight	5.7 lb (2.6 kg)	8.3 lb (3.8 kg)
Note	—	—



Selection Guide



Model	FWS-8500	FWS-7810	FWS-2250
Platform			
Form Factor	2U Rackmount Network Platform	1U Rackmount Network Platform	Desktop 4-Port Network Appliance
Processor	Intel® Haswell-EP Xeon E5-2600 v3 Series, LGA 2011	Intel® LGA1150 4th Gen Core™/ Xeon Processor	Intel® Atom™ E3815 1.46 GHz (Single Core) Intel® Atom™ E3827 1.75 GHz (Dual Core) Intel® Celeron® J1900 2.0 GHz (Quad Core)
Chipset	Intel® Coletto Creek 8925 PCH	Intel® C226	—
System Memory	DDR4 1600/1866/2133 RDIMM, Up to 128GB, 288-Pin DIMM x 16 (8 DIMM Per CPU)	DDR3 1333/1600 UDIMM/ECC, up to 32GB, 240-pin DIMM x 4	204-pin Dual channel DDR3L 1333/1600MHz SODIMM x 2, up to 8GB (E3815 Single Channel)
Network			
Ethernet	Depends on NIM, onboard 1GbE LAN x 1 (Optional 1GbE LAN x 2)	1GbE x 8 + NIM	Intel® i211, Gigabit Ethernet x 4
Bypass	Depends on NIM	2 ~ 4 (Depends on NIM)	Supports 1 pair bypass function
NIM Slot	8	1	—
Display			
Graphic Controller	Mini-card VGA (Optional)	Intel® Integrated	Reserve internal VGA pin header x 1
Connector	VGA cable (Optional)	VGA cable (Optional)	—
Storage			
HDDs	Internal 3.5" SATA HDD x 1 or 2.5" SATA HDD x 2 (Optional)	Internal 3.5" SATA HDD x 1 or 2.5" SATA HDD x 2 (Optional)	Optional SATA II connector x 1
CF/CFast/mSATA	CF socket x 1	CF socket x 1	CF socket x 1
Expansion/Internal Interface			
PCIe slot	PCIe [x8] slot x 2 (Optional)	PCIe [x8] slot x 1 (Optional) or PCIe [x8] slot x 2, cannot use w/ NIM (Optional)	—
Mini-card slot	1	—	Mini-Card slot x 1 (Half size)
IPMI	—	—	—
Keyboard & Mouse	Reserve pin-header	Reserve pin-header	Reserve pin-header
Universal Serial Bus	USB x 2 for internal pin-header (optional)	USB 2.0 x 2 Box Header (2.0mm) (optional)	USB2.0 x 2, USB3.0 x 1
Miscellaneous			
RTC	Internal RTC	Internal RTC	Internal RTC
Watchdog Timer	1~255 steps by software programmable	1~255 steps by software programmable	1~255 steps by software programmable
Software Button	GPIO Programmable push button x 1	GPIO Programmable push button x 1	GPIO Programmable push button x 1
TPM	TPM v1.2	—	—
GPIO	8 bits, BIOS default 4 bits input, 4 bits output.	—	—
FAN	5	2	Fan/Fanless refers to order information
MTBF (Hours)	—	115,000	90,000
Color	Black	Black	White
Environmental Parameters and Dimension			
Power Requirement	650W Redundant PSU	250W ATX PSU	12V DC power in connector/ 40W Power adapter x 1 4-pin DC power out connector for HDD x 1
Operation Temp.	32°F ~ 104°F (0°C ~ 40°C)	32°F ~ 104°F (0°C ~ 40°C)	32°F ~ 104°F (0°C ~ 40°C)
Storage Temp.	-4°F ~ 140°F (-20°C ~ 60°C)	-4°F ~ 140°F (-20°C ~ 60°C)	-4°F ~ 140°F (-20°C ~ 60°C)
Operating Humidity	10 ~ 80%	10 ~ 80%	10%~80% relative humidity, non-condensing
Storage Humidity	10 ~ 80% @ 40°C, non-condensing	10 ~ 80% @ 40°C, non-condensing	10%~80% @40°C, non-condensing
Vibration	0.5 Grms/ 5 ~ 500Hz/ operation (3.5" H.D.D) 1.5 Grms/ 5 ~ 500Hz/ no operation	0.5 Grms/ 5 ~ 500Hz/ operation (3.5" H.D.D) 1.5 Grms/ 5 ~ 500Hz/ no operation	0.5 Grms/ 5 ~ 500Hz/ operation (3.5" H.D.D) 1.5 Grms/ 5 ~ 500Hz/ no operation
Shock	10 G peak acceleration (11 m sec. duration), operation 20 G peak acceleration (11 m sec. duration), non-operation	10 G peak acceleration (11 m sec. duration), operation 20 G peak acceleration (11 m sec. duration), non-operation	10 G peak acceleration (11 m sec. duration), operation 20 G peak acceleration (11 m sec. duration), non operation
Chassis Dimension (W x D x H)	18.9" x 23.62" x 3.46" (480mm x 600mm x 88mm)	16.93" x 12.01" x 1.73" (430mm x 305mm x 44mm)	6.3" x 4.09" x 1.38" (160mm x 104mm x 35mm)
I/O Interfaces			
Front Panel	Power LED x 1, Status LED x 1, HDD Active LED x 1, USB 2.0 Ports x 2, RJ-45 Console x 1, Parallel LCM display and 4 keypad x 1, Software Programmable Button x 1, RJ-45 LAN x 1 (Optional RJ-45 LAN x 2)	Power LED x 1, Status LED x 1, HDD Active LED x 1, LAN ports Link/ Active LED x 8, Bypass LED (Default 2 LEDs), USB 3.0 Ports x 2, RJ-45 Console x 1, Parallel LCM display and 4 keypad x 1, Software Programmable Switch x 1	Power LED x 1, Status LED x 1, HDD Active LED x 1 Bypass LED x 1 (Optional) LAN LED x 8
Rear Panel	AC Power Input x 1 Power Switch x 1 Rear Expansion Slot x 1 (Optional PCIe [x8])	AC Power Input x 1, Power Switch x 1 VGA port (Optional) Rear Expansion Slot x 2 (Optional)	12V DC Power Input x 1, Power Button x 1, USB3.0 x 1 USB2.0 x 2, RJ-45 LAN x 4, RJ-45 Console x 1, Software Programmable Button x 1



Selection Guide



Model	NVR-6300S	NVR-Q67	NVR-Q67S	NVR-B75	NVR-CV
System					
Form Factor	4U Rackmount	2U Rackmount	2U Rackmount	Tower Station	Tower Station
Processor	Intel® 4th Gen. Core™ i3/i5/i7 Processor	Intel® 2nd Gen. Core™ i3/i5/i7 Processor	Intel® 2nd Gen. Core™ i3/i5/i7 Processor	Intel® 3rd Gen. Core™ i3/i5/i7 Processor	Intel® Atom™ D2250
Chipset	Intel® Q87	Intel® Q67	Intel® Q67	Intel® B75	Intel® ICH10R
Main Memory	Up to 32GB, DDR3, Non-ECC 1333MHz, 240-pin DIMM	Up to 32GB, DDR3, Non-ECC 1333MHz, 240-pin DIMM	Up to 32GB, DDR3, Non-ECC 1333MHz, 240-pin DIMM	Up to 16GB, DDR3, Non-ECC 1333MHz, 240-pin DIMM	Up to 4GB, DDR3, Non-ECC, 1066MHz 204-pin SODIMM
Display	HDMI x 1, DP x 1, VGA x 1	DVI-D x 1, VGA x 1, DP x 1	DVI-D x 1, VGA x 1, DP x 1	VGA x 1, HDMI port x 3	DVI-D x 1, VGA x 1
Ethernet	10/100/1000Base-TX x 2	10/100/1000Base-TX x 2	10/100/1000Base-TX x 2	10/100/1000Base-TX x 2	10/100/1000Base-TX x 2
PoE Ethernet Port	2 ports (optional)	—	—	—	—
RAID support	0/1/5/10	0/1/5/10	0/1/5/10	—	0/1/5
Expansion Slot	PCI-E [x16] x 1, PCI-E [x4] x 1	PCI-E [x16] x 1, PCI-E [x4] x 1, PCI x 2	PCI-E [x16] x 1, PCI x 2	—	PCI-E [x4] x 1
GPS	—	—	—	—	—
Front I/O Panel	Power Button x 1 Reset Button x 1 Power LED x 1 USB3.0 x 2, USB2.0 x 1 Slim optical disk drive x 1	Power Button x 1 Reset Button x 1 Power & HDD LED USB2.0 x 2 (only for RM-S model)	Power Button x 1 Reset Button x 1 Power & HDD LED USB2.0 x 2 (only for RM-S model)	Power Button x 1 Reset Button x 1 Power & HDD LED USB3.0 x 2	Power Button x 1 Reset Button x 1 Power & HDD LED USB2.0 x 2
Rear I/O Panel	USB3.0 x 2 USB2.0 x 2 LAN (RJ-45) Ports x 2 (PoE optional) HDMI x 1, DP x 1, VGA x 1 Audio Jack x 3 PS/2 keyboard/Mouse x 1	VGA x 1, DVI-D x 1 DP x 1 LAN (RJ-45) port x 2 USB 2.0 x 4 Audio jack x 3 PS/2 x 1 (Keyboard + Mouse)	VGA x 1 DVI-D x 1 DP x 1 LAN (RJ-45) port x 2 USB 2.0 x 4 Audio jack x 3 PS/2 x 1 (Keyboard + Mouse)	HDMI x 3 DVI-D x 1 LAN (RJ-45) port x 2 USB 2.0 x 4 Audio jack x 3 PS/2 x 1 (Keyboard + Mouse)	VGA x 1, DVI-D x 1 LAN (RJ-45) port x 2 USB 2.0 x 4 COM console x 2 Audio jack x 3
Environmental					
Operating Temperature	32°F ~ 104°F (0°C ~ 40°C)	32°F ~ 104°F (0°C ~ 40°C)	32°F ~ 104°F (0°C ~ 40°C)	32°F ~ 104°F (0°C ~ 40°C)	32°F ~ 104°F (0°C ~ 40°C)
Storage Temperature	-4°F ~ 140°F (-20°C ~ 60°C)	-4°F ~ 140°F (-20°C ~ 60°C)	-4°F ~ 140°F (-20°C ~ 60°C)	-4°F ~ 140°F (-20°C ~ 60°C)	-4°F ~ 140°F (-20°C ~ 60°C)
Storage Humidity	10%~80% @40°C, non-condensing	10%~80% @40°C, non-condensing	10%~80% @40°C, non-condensing	10%~80% @40°C, non-condensing	10%~80% @40°C, non-condensing
Vibration/Shock	IEC68-2-64	IEC68-2-64	IEC68-2-64	IEC68-2-64	IEC68-2-64
Certification	CE/FCC Class A	CE/FCC Class A, CCC	CE/FCC Class A, CCC	CE/FCC Class A	CE/FCC Class A, CCC
Power Requirement					
Power Supply	600W ATX single PS2	460W ATX PS2	1U 500W PSU, 80 plus Gold	SFX 400W PSU	200W AC power input
Mechanical					
Hot Swappable HDD Tray	3.5" x 12, 2.5" x 1	—	3.5" x 8	3.5" x 5	3.5" or 2.5" x 4
Internal System HDD Bay	3.5" x 1 or 2.5" x 1 (SATA DOM optional)	2.5" HDD x 1 (SATA DOM optional)	2.5" HDD x 1 (SATA DOM optional)	3.5" HDD x 1 (SATA DOM optional)	2.5" HDD x 1 (SATA DOM optional)
Dimension	19.02" x 25" x 7.01" (483mm x 635mm x 178mm)	19.41" x 16.61" x 3.46" (493mm x 422mm x 88mm)	25.98" x 16.93" x 3.46" (660mm x 430mm x 88mm)	10.83" x 8.07" x 11.81" (275mm x 205mm x 300mm)	7.87" x 11.93" x 9.84" (200mm x 303mm x 250mm)
Gross Weight	33 lb (15 Kg)	26.4 lb (12 kg)	28.7 lb (13 kg)	22 lb (10 kg)	19.8 lb (9 kg)
Note	—	—	—	—	—

AAEON Headquarters

AAEON Technology Inc.

5F, No. 135, Lane 235, Pao Chiao Rd.,
Hsin-Tien Dist, New Taipei City, 231, Taiwan, R.O.C.

Tel: +886-2-8919-1234
Fax: +886-2-8919-1056
E-mail: sales@aaeon.com.tw
URL: http://www.aaeon.com

LITERATURE ORDERING

Contact local office for literature requests.

Worldwide Offices

Americas

USA

California Office

324 W. Blueridge Ave, Orange, CA 92865, USA

Toll Free: +1-877-TQ-AAEON (1-877-862-2366)
Tel: +1-714-996-1800
Fax: +1-714-996-1811
E-mail: sales@aaeon.com
Tech Support: tech@aaeon.com

New Jersey Office

11 Crown Plaza, Hazlet, NJ 07730-2441, USA

Toll Free: +1-888-AAEON-US (1-888-223-6687)
Tel: +1-732-203-9300
Fax: +1-732-203-9311
E-mail: sales@aaeon.com
Tech Support: tech@aaeon.com

Europe

Netherlands

AAEON EUROPE

Ekkersrijt 4002, 5692 DA SON, The Netherlands

Tel: +31(0)499-745200
Fax: +31(0)499-462010
E-mail: sales@aaeon.eu

Germany

AAEON Technology GmbH

An der Trift 65d, D-63303 Dreieich, Germany

Tel: +49(0)61033 74 79 00
Fax: +49(0)61033 74 79 49
E-mail: sales@aaeon.eu

France

AAEON France Office

REGUS VAL DE FONTENAY

201 Rue Carnot,

94120 Fontenay-sous-Bois, France

Tel: +33 6 32 90 79 99
E-mail: sales@aaeon.eu

Asia

Japan

Japan Branch Office

408B West Wing, KSP, 3-2-1, Sakado, Takatsu-ku,
Kawasaki City, Kanagawa 213-0012 Japan

Tel: 044-712-4122
Fax: 044-712-4123
E-mail: jaychang@aaeon.com.tw

Singapore

AAEON Technology Singapore PTE LTD.

57 Genting Lane, #07-00, Singapore 349564

Tel: +65-6749-8749
Fax: +65-6746-1595
E-mail: sales@aaeon.com.sg

Asia

China

Shanghai Branch Office

20F, Unit D, GEM Building, No.487 Tianlin Road, Xuhui District, Shanghai, China

Tel: +86-21-3367-5511
Fax: +86-21-3367-4238
E-mail: sales@aaeon.com.cn

Beijing Branch Office

Room 606-608 Block D, Jiahua Building, No.9,
Shangdi 3rd Street, Haidian District, Beijing, China

Tel: +86-10-8278-0904
Fax: +86-10-8278-0214
E-mail: sales@aaeon.com.cn

Shenzhen Branch Office

Room 1204, Jinmin Building, 6 Zizhu Road, Zhuzilin Futian District, Shenzhen, China

Tel: +86-755-8304-7277
Fax: +86-755-8304-7272
E-mail: sales@aaeon.com.cn

Chengdu Branch Office

Room 2204, 22F, Building 6, No.666, JinCheng Avenue,
GaoXin District, Chengdu City, China

Tel: +86-13312951135
E-mail: sales@aaeon.com.cn

Wuhan Branch Office

B1501, 111 Guangu time Square Guanshan st. Wuhan Hubei Province, China

Tel: +86-27-87606090
E-mail: sales@aaeon.com.cn

AAEON Technology (Su Zhou) Inc.

Room 12, 2F, Building B, No.5 Xing Han Street,
Suzhou Industrial Park, Jiang Su Province, China

Tel: +86-512-6762-5700
Fax: +86-512-6761-7337
E-mail: sales@aaeon.com.cn

