

# PER-C20S

Serial-ATA Add-On Card Mini PCI Module (2 Ports)

## Thermal Image Analysis Report

Report NO: 06E080030

Release Date: Sep 01, 2006

2006/09/01

Issue Stamp

Wenyuan Yang

Manager

Eva Yeh

Test Engineer

# Thermal Image Analysis

---

**I . Model Name: PER-C20S A1.0**

**II . Description: Serial-ATA Add-On Card Mini PCI Module (2 Ports)**

**III . Date: Sep 01, 2006**

**IV. Measure Site: AAEON QE Dept.**

**V. Issued by : Eva Yeh**

**VI. Equipment:**

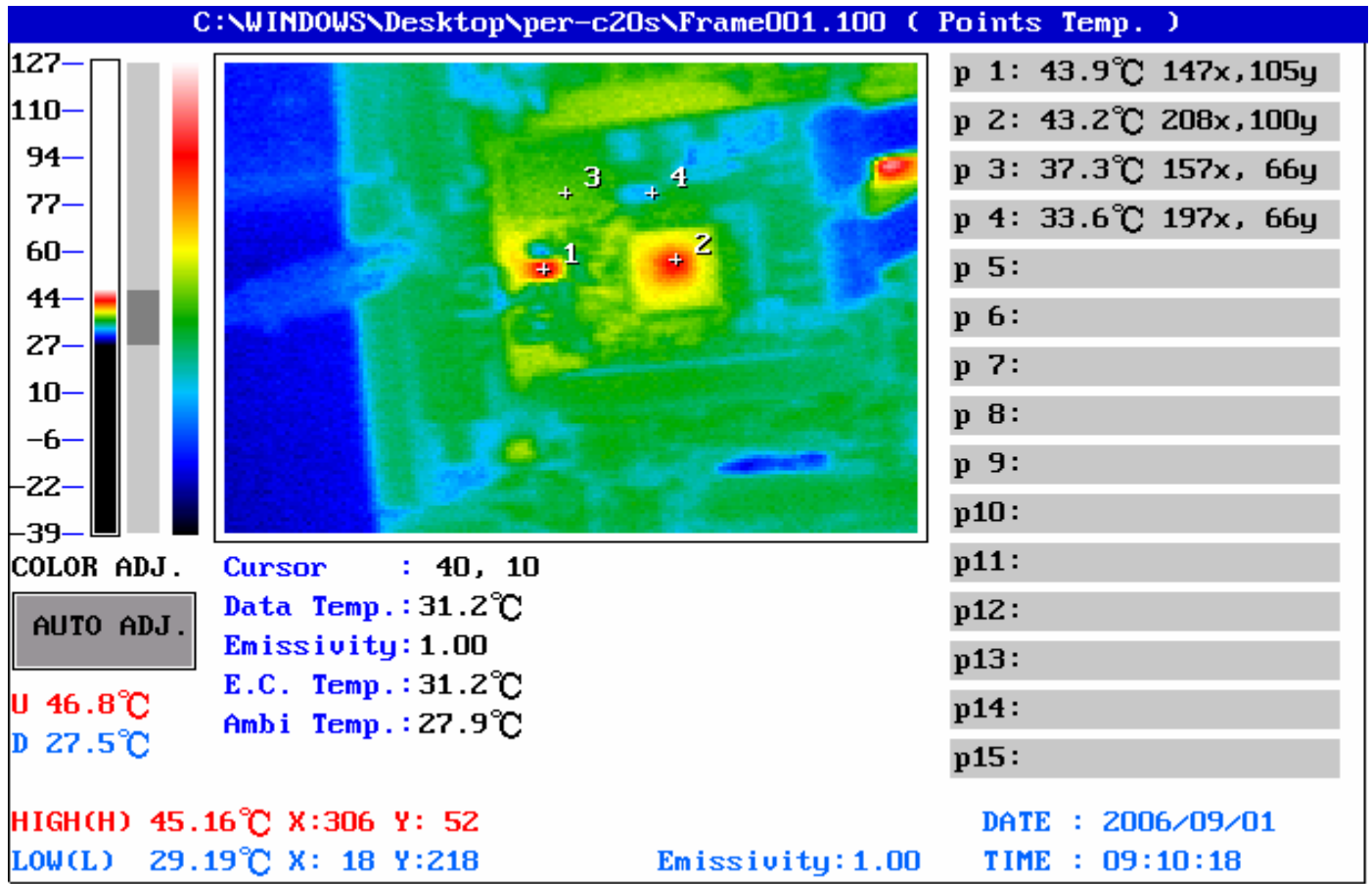
**TVS-100 series by NIPPON AVIONICS CO., LTD.**

**VII. Simulation Environment:**

- **Temperature: Component Side-1 Ambient Temp.: 27.9°C ,**
- **CPU : Intel (R) Pentium M Processor CPU 1.80GHz**
- **RAM : Winbond W942508CH-6 0330WI 431815900 DDR333 SDRAM 512MB**
- **BIOS : PCM-8200 BIOS Rev:1.3 (06/04/2006)**
- **Mini PCI Module BIOS : Sil 3512A SATARaud Bios Ver:4.3.76**
- **CF Card : N/A**
- **HDD1: Seagate ST3120827A 120GB SATA/150 HDD**
- **HDD2: Western DigitalWD1600JD-00HBB0 160GB SATA/150 HDD**
- **Application Software: Run Prime95 under Windows XP Professional V2002 Service Pack 2**
- **Take Picture Time: After Power on 2 hours.**

## Temperature Profile Test:

### Component Side-1:



| Point | Position | Describe   | Tc (°C) | Tm (25°C) | Tm (60°C) | Note |
|-------|----------|--|---------|-----------|-----------|------|
| 1     | Q1       | (TF)REG.SMD SOT223.1A Adjustable Linear Regulator.ANPEC.APL1117-VC-TRL | 125     | 43.9      | 76        |      |
| 2     | U1       | (TF)IC.PCI to Serial ATA Controller.Silicon Image.Sil3512ECTU128       | 100     | 43.2      | 75.3      |      |
| 3     | U2       | (TF)IC.SMD.TSOP.32P.Flash Memory 128K*8.SST.SST39VF010-70-4C-WHE       | 100     | 37.3      | 69.4      |      |
| 4     | Y1       | (TF)XTAL SMD.25MHZ.6*3.5 mm 20PPM.2P.仕野.XSX250-S632-20                 | 100     | 33.6      | 65.7      |      |
|       |          |  |         |           |           |      |
|       |          |  |         |           |           |      |
|       |          |  |         |           |           |      |
|       |          |  |         |           |           |      |
|       |          |  |         |           |           |      |
|       |          |  |         |           |           |      |
|       |          |  |         |           |           |      |
|       |          |  |         |           |           |      |
|       |          |  |         |           |           |      |
|       |          |  |         |           |           |      |

1. Tm (Measured operation temperature) must be less than Tc (Specified case temperature) +5 degree C  
 2. Any Tm value showed in red words which meaning the value is over the Tc+ 5 degree C of this device specification