



AAEON Technology INC.
ISO-9001/ISO-14001 Certified
Industrial Automation PCs

PCM-8200 A0.1

Thermal Image Analysis Report

Report NO: 04E080001

01-28-2004

Issue Stamp

Wenyuan Yang

QE Manager

Rex Chang

Test Engineer

Thermal Image Analysis

. **Model Name:** PCM-8200 Rev.A0.1 (Bios Ver.A0.6)

. **Description:** Compact Board

. **Date:** JAN. 28, 2004

. **Measure Site:** AAEON QE Dept.

. **Issued by :** Rex Chang

.**Equipment:** TVS-100 series by NIPPON AVIONICS CO., LTD.

. **Simulation Environment:**

Temperature:

Component Side : 21.3 degrees C

Solder Side : 21.4 degrees C

CPU: Intel Micro-FCBGA 479pin Banias™1.6GHz

RAM: Kingston D3208dl1T-5 256MB(DDR333)

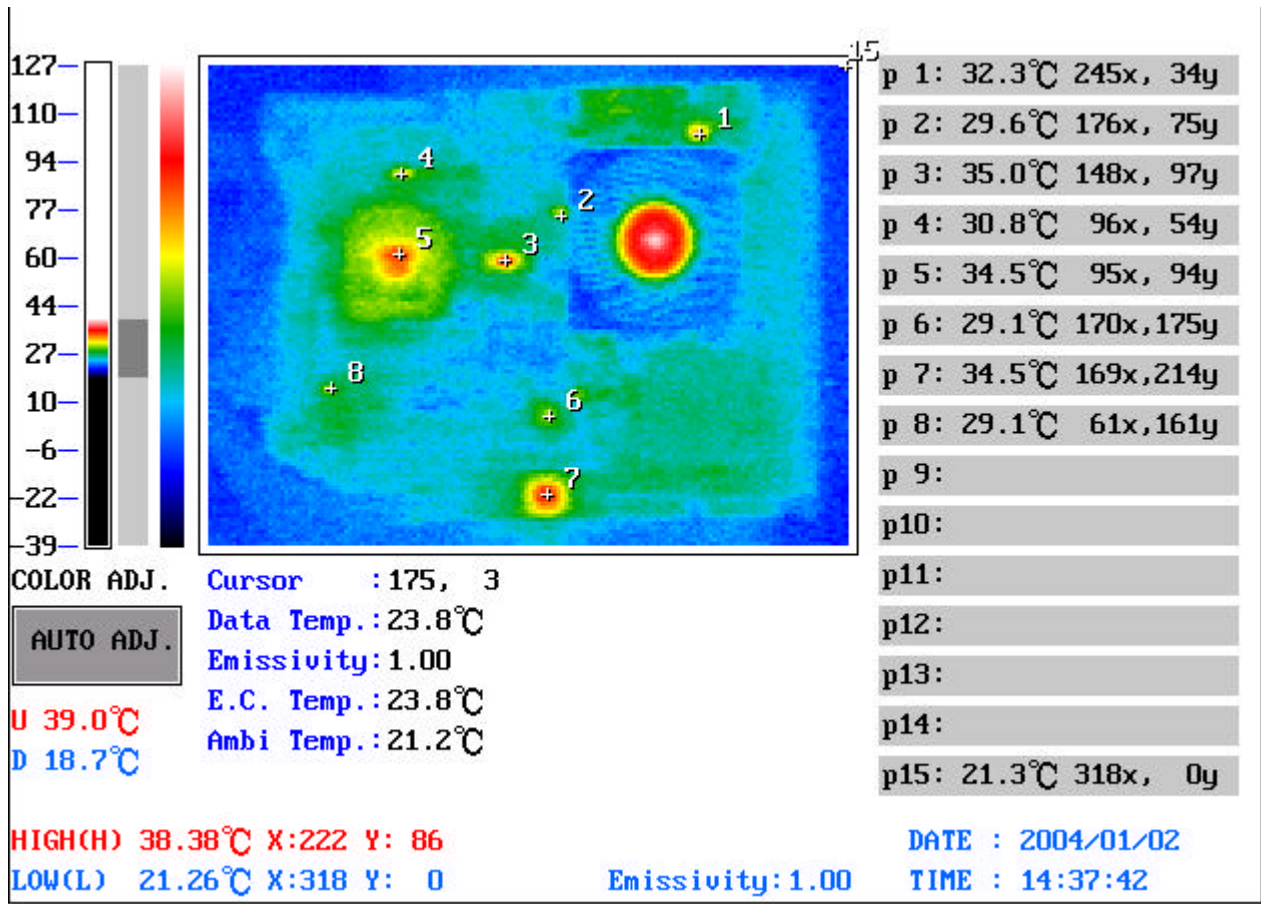
Hardware: Maxtor DiamondMax Plus 8 / 40GB (ATA / 133)

Application Software: Windows 2000 / Run HCT 9.5

Take Picture Time: Power on 2 hours after

Temperature Profile Test:

Component Side:



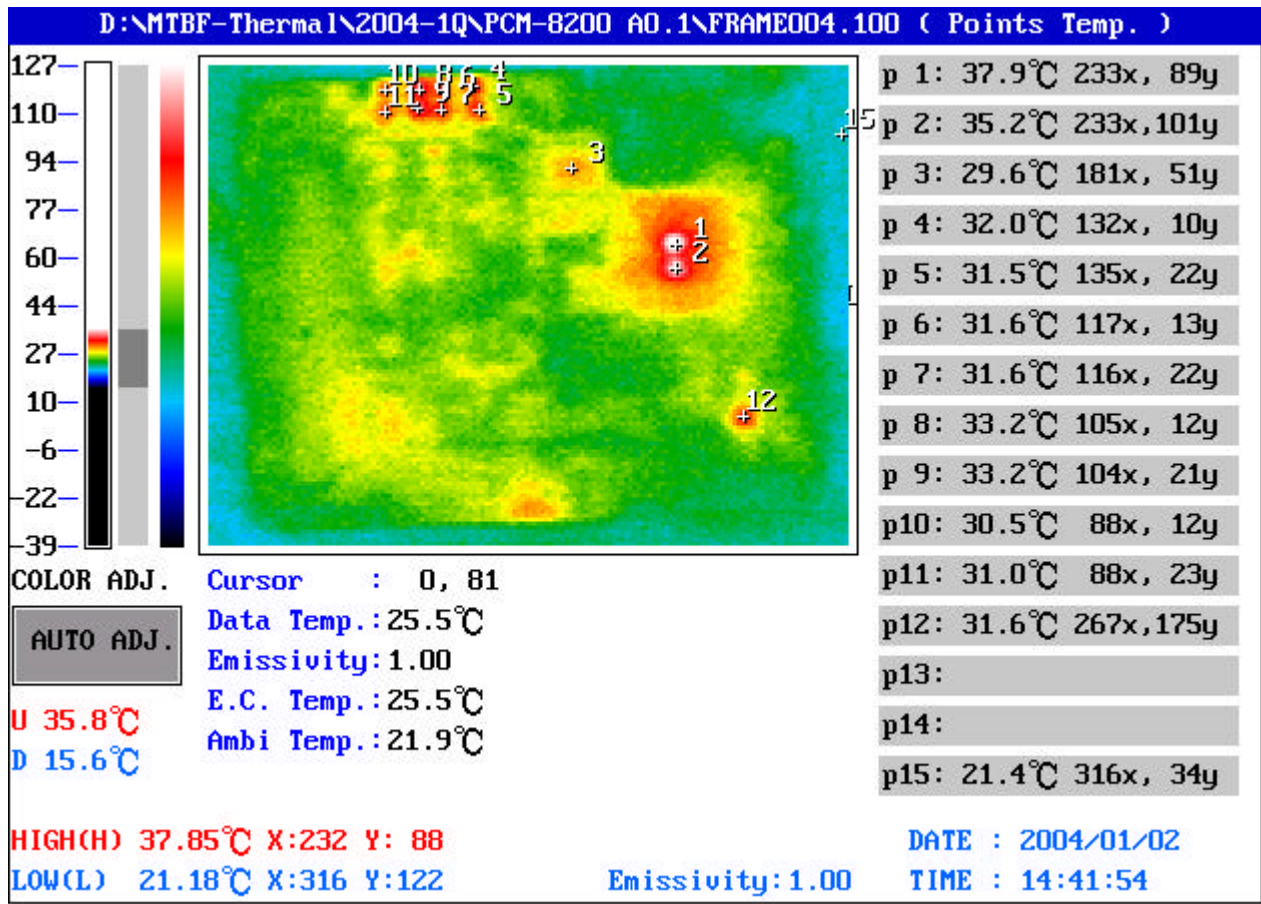
Point	Position	Describe	Ts	Tm()	Note
1	U21	IC.SMD MLP-18.Complete DDR Power Solution.SEMTECH.SC2616ML		32.3	
2	U16	IC.SMD TSSOP-38 IMVP4.Dual Phase PWM Controller.SEMTECH.SC1476		29.6	
3	U12	IC.SMD.TSSOP 56PIN.CLOCK GENERATOR.ICS.ICS952601		35.0	
4	U20	IC.SMD.PLCC 32Pin FWH(4MB).SST.49LF004A		30.8	
5	U4	IC.SMD. Chipset MONTARA.INTEL.RG82855GME		34.5	
6	U5	IC.SMD LQFP.64P DVI/TV ENCODER.CHRONTEL.CH7009A		29.1	
7	U2	IC.SMD PBGA 196P.PCI Ethernet 10/100BaseT.Intel.GD82551ER		34.5	
8	U6	IC.SMD SOP.8Pin Switching PWM Controller.IR.IRU3037CS		29.1	
9					
10					
11					
12					
13					
14					
15		The Room Temperature		21.3	

Operation Temperature ():

Ts = Defined by component specification ; Tm = Measured by QE

Temperature Profile Test:

Solder Side:



Point	Position	Describe	Ts	Tm ()	Note
1	Q43	IC.SMD SO-8.1.5A.Low Dropout Regulator.Adj(1.2~4.8V).SEMTECH.SC1565IS		37.9	
2	Q47	IC.SMD SO-8.1.5A.Low Dropout Regulator.Adj(1.2~4.8V).SEMTECH.SC1565IS		35.2	
3	U30	IC.SMD.IT8712F 128P Super I/O.ITE.IT8712F/GX		29.6	
4	Q59	PWR.SMD SO8.N-Channel POWER MOSFET.FAIRCHILD.FDS6680S		32.0	
5	Q55	PWR.SMD SO8.N-Channel POWER MOSFET.FAIRCHILD.FDS6680S		31.5	
6	Q58	PWR.SMD SO8.N-Channel MOSFET 30V 15A.FAIRCHILD.FDS7760A		31.6	
7	Q54	PWR.SMD SO8.N-Channel MOSFET 30V 15A.FAIRCHILD.FDS7760A		31.6	
8	Q57	PWR.SMD SO8.N-Channel POWER MOSFET.FAIRCHILD.FDS6680S		33.2	
9	Q53	PWR.SMD SO8.N-Channel POWER MOSFET.FAIRCHILD.FDS6680S		33.2	
10	Q56	PWR.SMD SO8.N-Channel MOSFET 30V 15A.FAIRCHILD.FDS7760A		30.5	
11	Q52	PWR.SMD SO8.N-Channel MOSFET 30V 15A.FAIRCHILD.FDS7760A		31.0	
12	U26	IC.SMD LQFP 48Pin.6 Channel AC'97 Audio Codec.REALTEK.ALC650		31.6	
13					
14					
15		The Room Temperature		21.4	

Operation Temperature () :
Ts = Defined by component specification ; Tm = Measured by QE