



**AAEON Technology INC.**  
ISO-9001/ISO-14001 Certified  
Industrial Automation PCs

# **PCM-6898**

## **Thermal Image Analysis Report**

**Release Date:NOV.16.2001**

---

**Issue Stamp**

---

**QA Manager**

---

**QE Manager**

---

**Test Engineer**

# Thermal Image Analysis

---

**I . Model Name: PCM-6898 A0.3**

**II . Description: FC/Socket 370 Media PC with LCD, Ethernet, Audio, AGP 4X, TV-out, SSD/Compact Flash, PC/104, PC/104 Plus, 4 USB Port, & 4COM Ports**

**III . Date: NOV. 16, 2001**

**IV . Measure Site: AAEON QE Dept.**

**V . Issued by : Joe Huang**

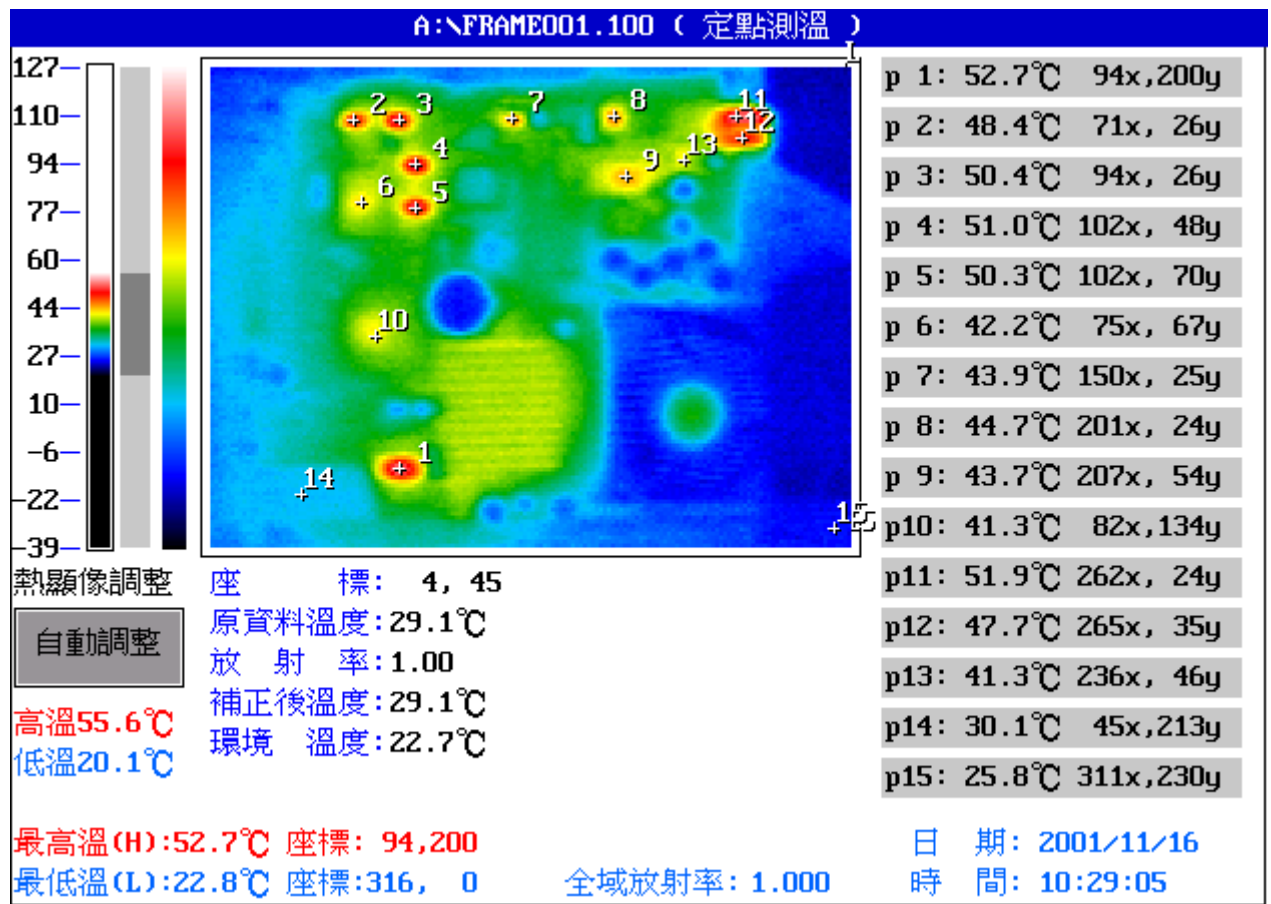
**VI.Equipment: TVS-100 series by NIPPON AVIONICS CO., LTD.**

**VII. Simulation Environment:**

- **Temperature: 25.8 degrees C**
- **CPU: Intel Pentium III 933/256/133/1.7V**
- **RAM: NEC D4564841G5-A80-9JF PC100 64 MB**
- **Hardware: DiskOnChip**
- **Application Software: QAPLUS/FE V5.5**
- **Take Picture Time: Power on 30 minutes after**

# Temperature Profile Test:

Component Side:



Point	Position	Describe	Ts	Tm	Note
1	U1	ICS 9248DF-39		52.7°C	
2	U21	GD75232		48.4°C	
3	U19	GD75232		50.4°C	
4	U18	GD75232		51.0°C	
5	U10	GD75232		50.3°C	
6	U11	RTL8139C		42.2°C	
7	U17	AMS1117		43.9°C	
8	U15	VIA VT1611A		44.7°C	
9	U13	HIP6021CB		43.7°C	
10	U7	VIA VT82C686B		41.3°C	
11	X4	14.31818E		51.9°C	
12	Q3	AMS1083CT		47.7°C	
13	U12	AMS1117		41.3°C	
14	U3	DOC		30.1°C	
15		The Room Temperature		25.8°C	

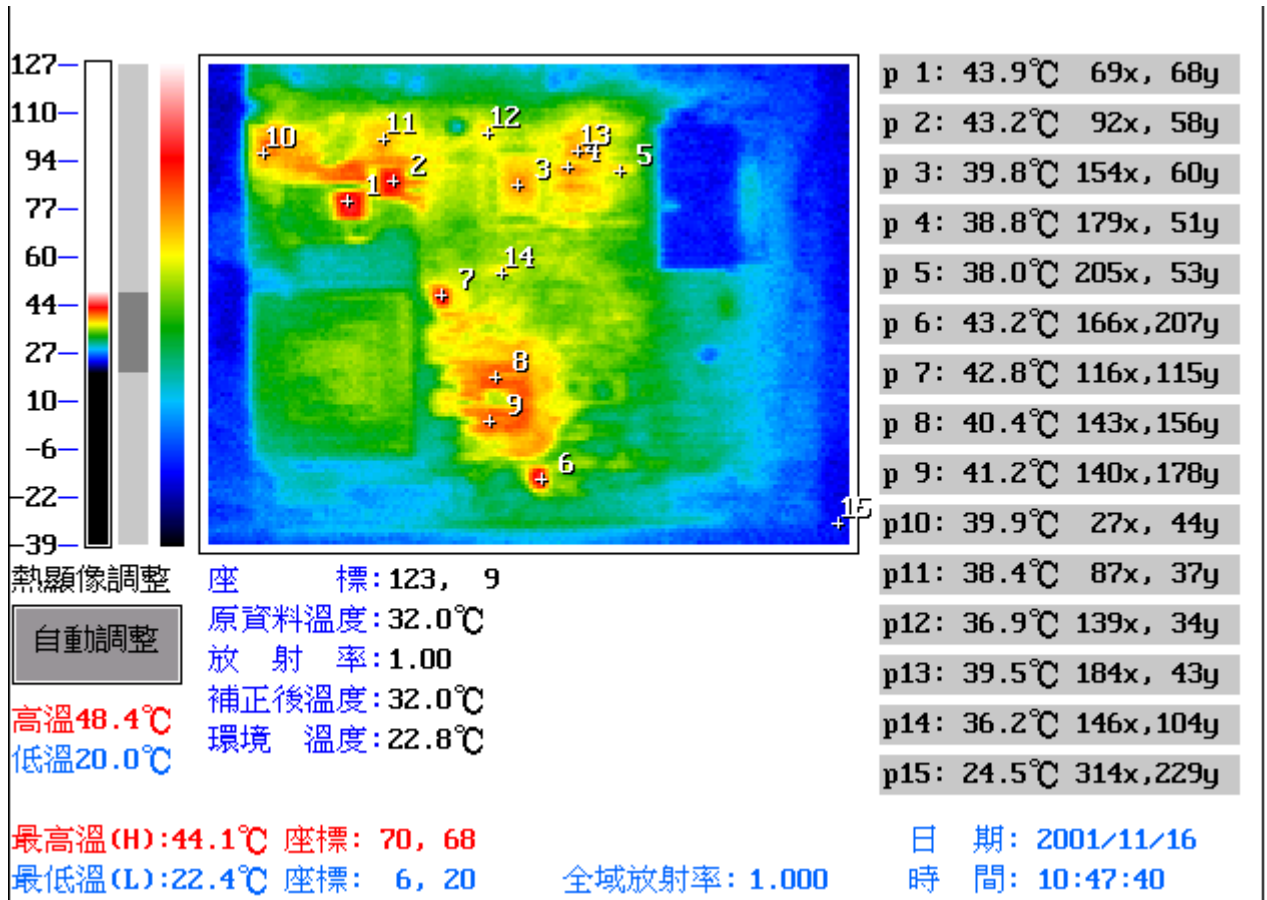
1. Operation Temperature (°C):

Ts = Defined by component specification ; Tm = Measured by QE

2. ※ = Ts - (Tm + 60 - 25)

# Temperature Profile Test:

## Component Side:



Point	Position	Describe	Ts	Tm	Note
1	Q12	76137S		43.9°C	
2	Q15	76137S		43.2°C	
3	U34	Winbond W83977EF-AW		39.8°C	
4	U35	PO3SB		38.8°C	
5	U38	9AE46JK		38.0°C	
6	Q7	76107D		43.2°C	
7	Q11	76107D		42.8°C	
8	U6	S3 8604 back		40.4°C	
9	U6	S3 8604 back		41.2°C	
10	C198	330J14		39.9°C	
11	CT36	2264 M36 1V		38.4°C	
12	CT40	106C M5201		36.9°C	
13	U36	104 485		39.5°C	
14	U25	13CXV6T F08		36.2°C	
15		The Room Temperature		24.5°C	

1. Operation Temperature (°C):

Ts = Defined by component specification ; Tm = Measured by QE

2. ※ = Ts - (Tm + 60 - 25)