



AAEON Technology INC.
ISO-9001/ISO-14001 Certified
Industrial Automation PCs

PCM-6894

Thermal Image Analysis Report

Release Date:Dec.24, 2002

Issue Stamp

Wayne Chen

DV Manager

Rex Chang

Test Engineer

Thermal Image Analysis

. **Model Name:** PCM-6894 Rev.A0.2 (BIOS:0.6)

. **Description:** Socket 370 Compact Board

. **Date:** Dec. 24, 2002

. **Measure Site:** AAEON DV Dept.

. **Issued by :** Rex Chang

. **Equipment:** TVS-100 series by NIPPON AVIONICS CO., LTD.

. **Simulation Environment:**

Temperature: 28.0 degrees C

CPU: Intel Pentium 933MHz (133*7.0)

RAM: 64MB NEC D4564841G5-A80-9JF

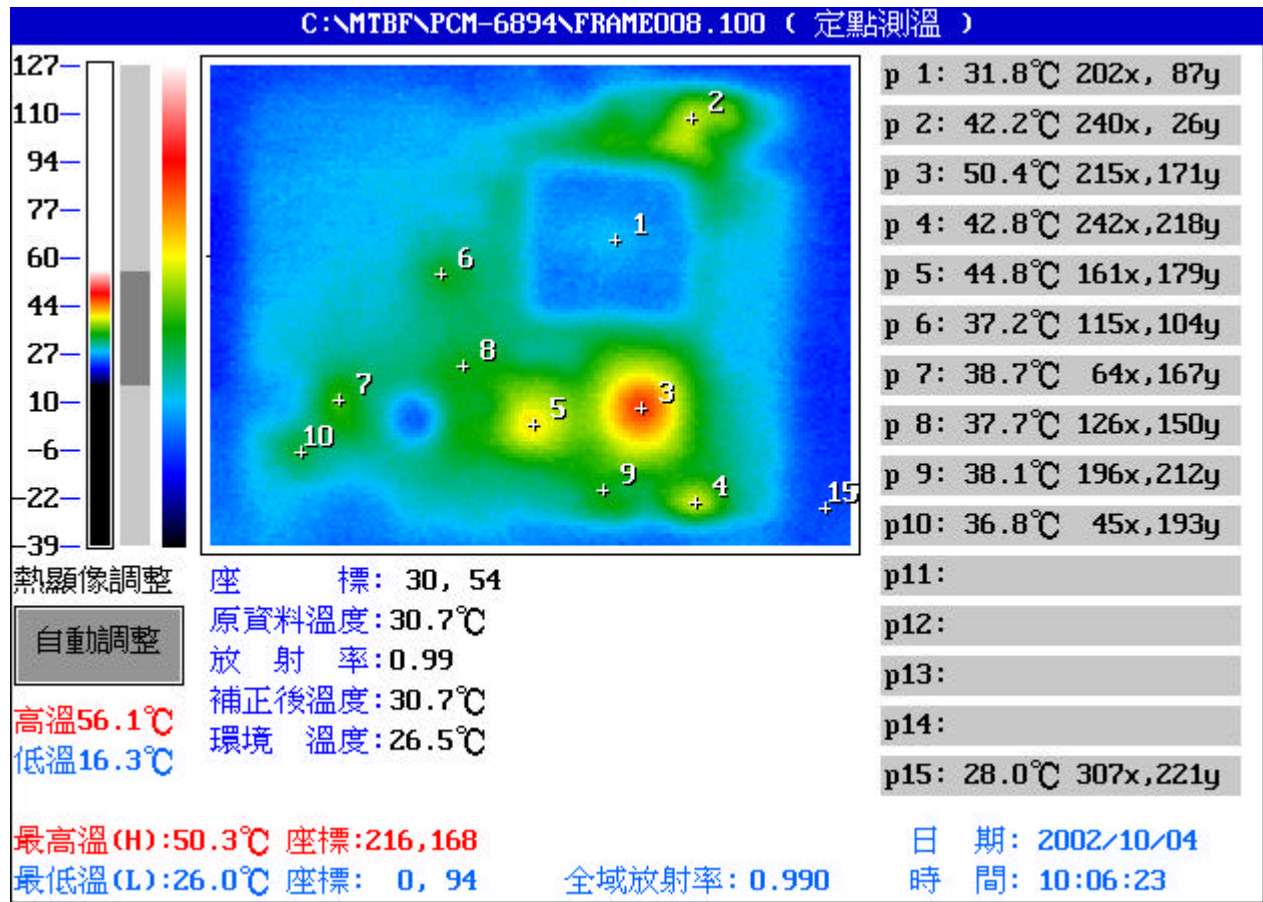
Hardware: Msystem DOC 8MB

Application Software: QAPLUS 5.5

Take Picture Time: Power on 30 minutes after

Temperature Profile Test:

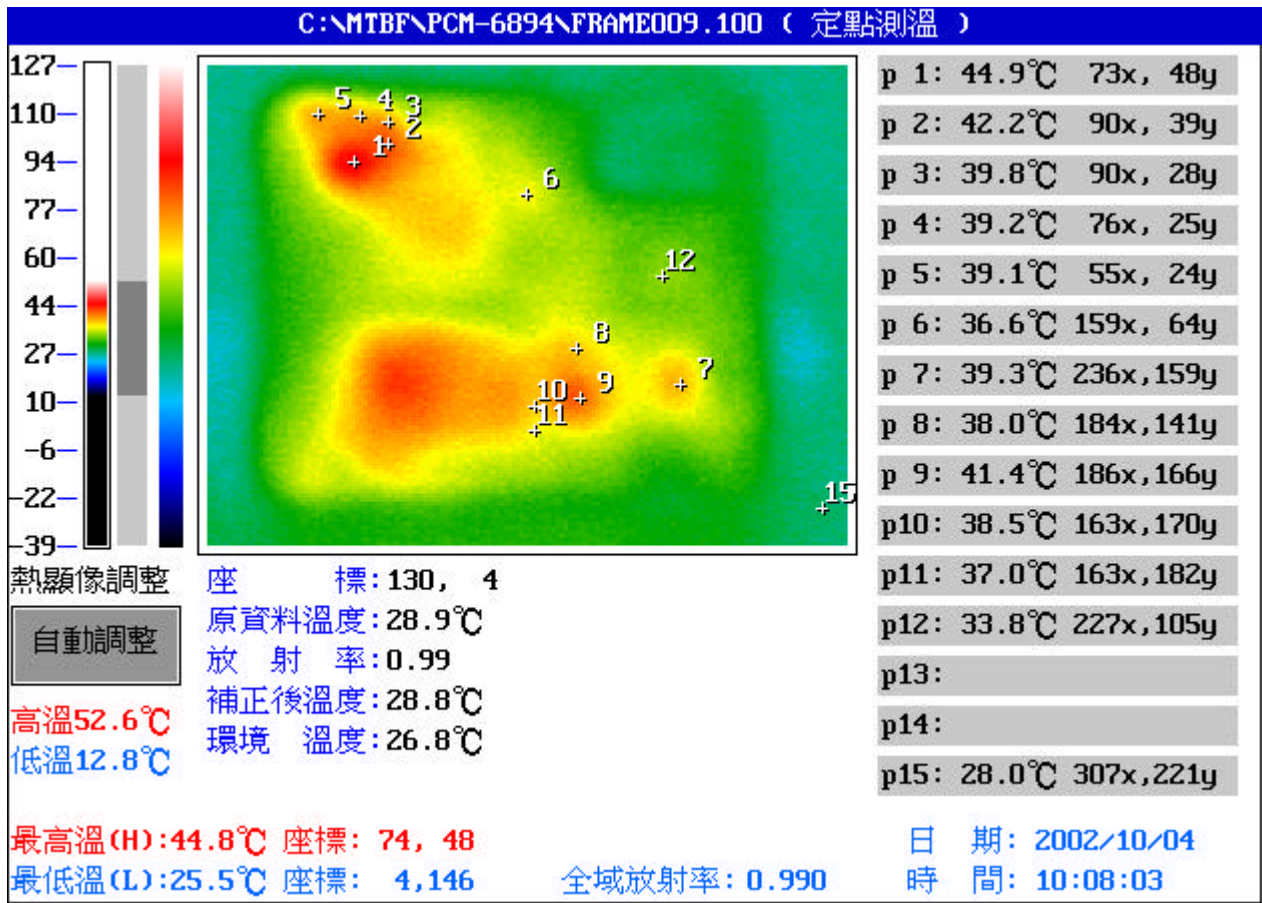
Component Side:



Point	Position	Describe	Ts	Tm	Note
1	U23	Intel Pentium 933MHz CPU + FAN		31.8	
2	L3	COIL 2.5 μ H TC5052-2R5M-UL		42.2	
3	U11	VIA VT82C694T		50.4	
4	U3	Clock Generator CYPRESS CY28316		42.8	
5	U10	Display Controller W/4M RAM SMI SM722G4		44.8	
6	U21	VIA VT82C686B		37.2	
7	U36	Realtek RTL8139C		38.7	
8	U13	HEX INVERTERS TI SN74LVC04A		37.7	
9	L1	COIL 3 μ H TC5052-3ROM-UL		38.1	
10	U8	AC'97 Audio Codec. AVANCE LOGIC ALC201		36.8	
11					
12					
13					
14					
15		The Room Temperature		28.0	

1. Operation Temperature ():

Ts = Defined by component specification ; Tm = Measured by DV



Point	Position	Describe	Ts	Tm	Note
1	U35	DC-DC Controller. FAIRCHILD FAN5056V85		44.9	
2	Q34	TO-252 30V N-Channel Power MOSEL FAIRCHILD FDD6680A		42.2	
3	Q36	TO-252 30V N-Channel Power MOSEL FAIRCHILD FDD6680A		39.8	
4	Q37	TO-252 30V N-Channel Power SyncFET FAIRCHILD NDS351AN		39.2	
5	Q38	TO-252 30V N-Channel Power SyncFET FAIRCHILD NDS351AN		39.1	
6	Q32	TO-252 3A Linear Regulator AMS . AMS1085CD		36.6	
7	U39	Realtek RTL8139C		39.3	
8	Q23	TO-252 3A Linear Regulator AMS . AMS1085CD		38.0	
9	Q21	REG AMS1117 800mA Linear Regulator SOT-223		41.4	
10	Y2	OSC 27.0MHz SMD 4P 5V FN2700009		38.5	
11	Y1	OSC 14.318MHz SMD 4P 5V FN1430002		37.0	
12	U32	QFP Super I/O Winbond W83977TF-AW		33.8	
13					
14					
15		The Room Temperature		28.0	

1. Operation Temperature ():

Ts = Defined by component specification ; Tm = Measured by DV