



**AAEON Technology INC.**  
ISO-9001/ISO-14001 Certified  
Industrial Automation PCs

# **PCM-6892**

## **Thermal Image Analysis Report**

**Release Date: Dec.18, 2002**

---

**Issue Stamp**

---

**DV Manager**

---

**Test Engineer**

# Thermal Image Analysis

---

. **Model Name:** PCM-6892 Rev.A0.3 (BIOS:0.5)

. **Description:** Compact Board

. **Date:** Dec. 18, 2002

. **Measure Site:** AAEON DV Dept.

. **Issued by :** Rex Chang

.**Equipment:** TVS-100 series by NIPPON AVIONICS CO., LTD.

. **Simulation Environment:**

Temperature: 22.9 degrees C

CPU: Onboard VIA 677AMHz

RAM: 64MB NEC D4564841G5-A80-9JF

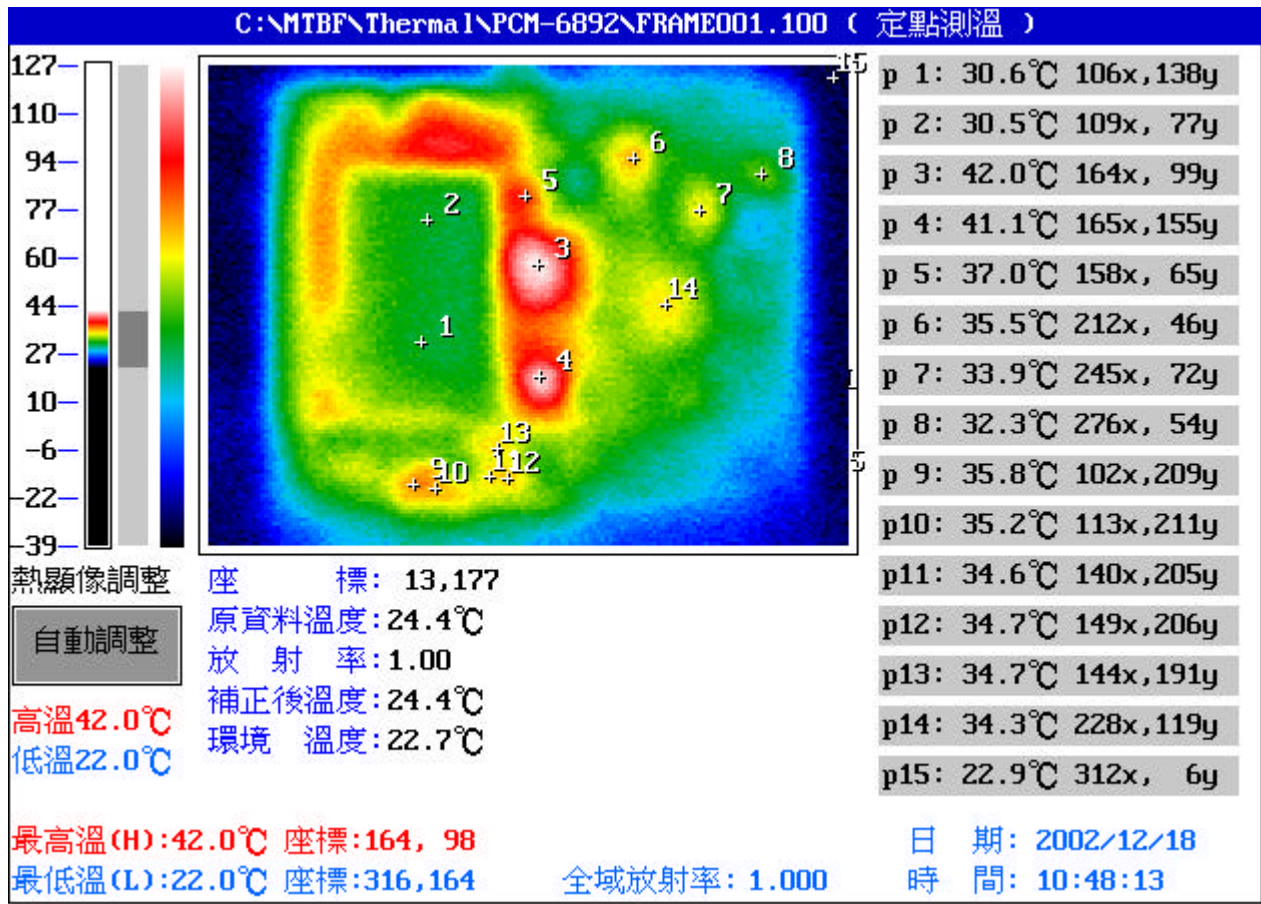
Hardware: Compact Flash 32MB

Application Software: QAPLus 5.5

Take Picture Time: Power on 30 minutes after

# Temperature Profile Test:

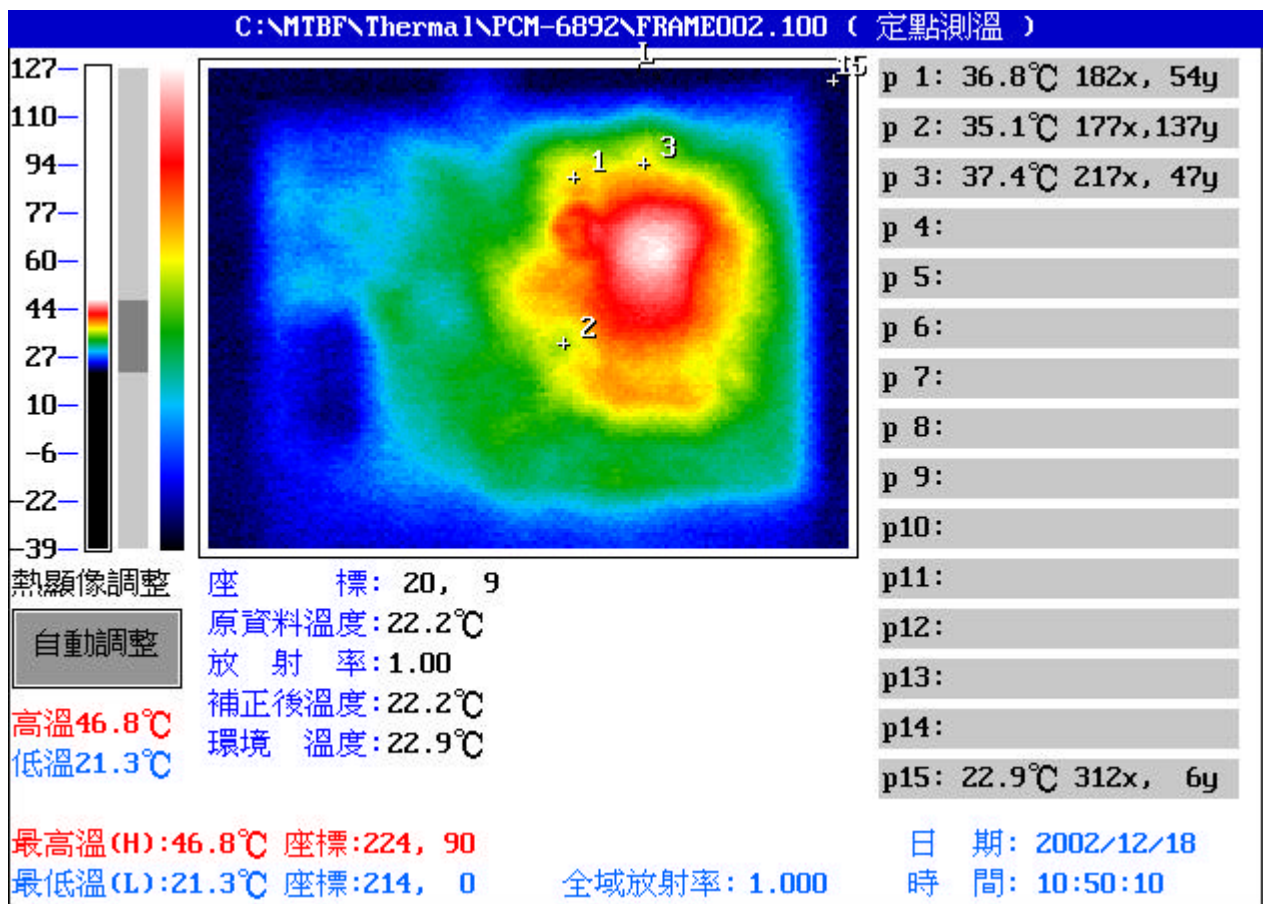
Component Side:



Point	Position	Describe	Ts	Tm	Note
1	U1	VIA CPU.EBGA 376P.Eden6000S 667MHz 1.1V		30.6	
2	U7	IC.SMD.552P BGA North Bridge.VIA.VT8606		30.5	
3	U5	IC.SMD.BGA South Bridge.VIA.VT82C686B		42.0	
4	U10	IC.SMD.SSOP 48P Clock Generator.PhaseLink.PLL202-01		41.1	
5	Y6	X'TAL.14.31818MHz.HALF.2P		37.0	
6	U13	IC.SMD.QFP 128P PCI Ethernet Chipset.Realtek.RTL8139C		35.5	
7	U15	IC.SMD.QFP 128P PCI Ethernet Chipset.Realtek.RTL8139C		33.9	
8	U17	IC.SMD QFP.48Pin AC'97 Sound Port Codec.VIA.VT1612A		32.3	
9	Q14	PWR.SMD TO-252 N-Channel.MOSFET RDSon 11mUCET.CEU6031		35.8	
10	Q13	PWR.SMD TO-252 N-Channel.MOSFET RDSon 11mUCET.CEU6031		35.2	
11	Q18	PWR.SMD TO-252 N-Channel.MOSFET RDSon 11mUCET.CEU6031		34.6	
12	Q15	PWR.SMD TO-252 N-Channel.MOSFET RDSon 11mUCET.CEU6031		34.7	
13	L70	COIL.3uH.DIP WIRE SIZE 1.2mm.高創.C50B18B-12A09YDP		34.7	
14	U35	IC.SMD.PQFP 208Pin PC CARD Controller.TI.PCI1420PDV		34.3	
15		The Room Temperature		22.9	

1. Operation Temperature ( ):

Ts = Defined by component specification ; Tm = Measured by DV



Point	Position	Describe	Ts	Tm	Note
1	U18	IC.SMD.PQFP 44P Digital TV Encoder.VIA.VT1621		36.8	
2	Q12	REG.SMD.3A Linear Regulator.AMS.AMS1085CM		35.1	
3	Q9	Dual P-Channel MOSFET 2.7V.SMD SO 8Pin.SILICON.SI9933ADY-TI		37.4	
4					
5					
6					
7					
8					
9					
10					
11					
12					
13					
14					
15		The Room Temperature		22.9	

1. Operation Temperature ( ):  
 Ts = Defined by component specification ; Tm = Measured by DV