



**AAEON Technology INC.**  
ISO-9001/ISO-14001 Certified  
Industrial Automation PCs

# **MPC-8890 A0.2**

## **Thermal Image Analysis Report**

**Report NO: 04E080004**

*03-02-2004*

**Issue Stamp**

*Wenyuan Yang*

**QE Manager**

*Rex Chang*

**Test Engineer**

# Thermal Image Analysis

---

. **Model Name:** MPC-8890 Rev.A0.2 (Bios Ver.A0.5)

. **Description:** Media PC

. **Date:** MAR. 02, 2004

. **Measure Site:** AAEON QE Dept.

. **Issued by :** Rex Chang

.**Equipment:** TVS-100 series by NIPPON AVIONICS CO., LTD.

. **Simulation Environment:**

**Temperature:** 21.8 degrees C

**CPU:** Genuine Intel (R) Mobile CPU 1.60GHz(100x16.0)

**RAM:** PQI PQ3D328D60335CU 256MB (DDR333)

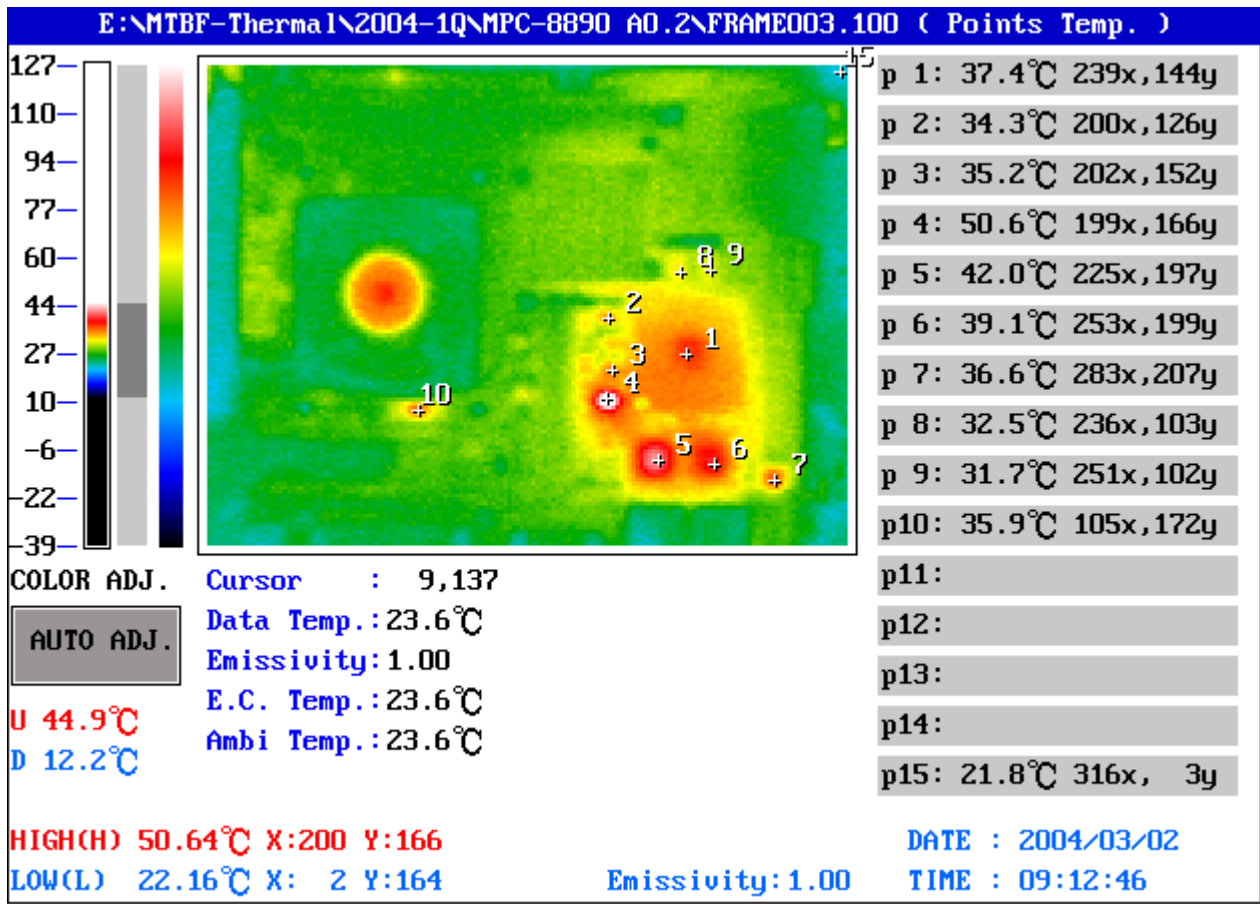
**Hardware:** Maxtor DiamondMax Plus 8 / 40GB ( ATA / 133)

**Application Software:** Windows 2000 / Run HCT 9.5

**Take Picture Time:** Power on 2 hours after

# Temperature Profile Test:

## Component Side:



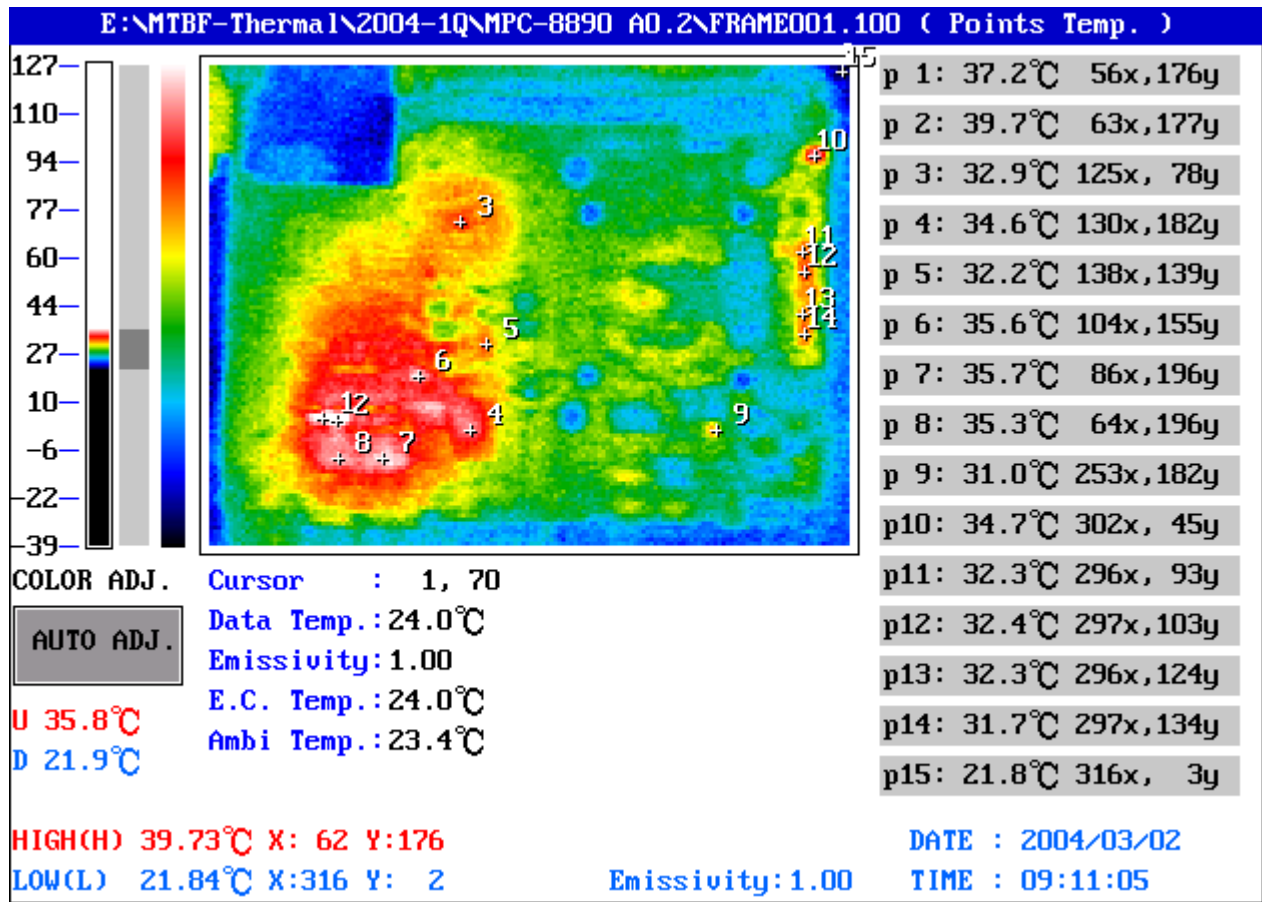
Point	Position	Describe	Ts	Tm( )	Note
1	U12	IC.Chipset Hance Rapids.INTEL.6300ESB		37.4	
2	Q13	PWR.SMD SO8.N-Channel MOSFET 30V 15A.FAIRCHILD.FDS7760A		34.3	
3	Q10	Dual N-Channel.SMD SO-8.2.5V MOSFET.APEC.AP9926M		35.2	
4	Q11	IC.SMD SO-8.1.5A.Low Dropout Regulator.Adj(1.2~4.8V).SEMTECH.SC1565IS		50.6	
5	U6	IC.SMD.Chipset.10/100BaseT LAVON.Intel.GD82551QM		42.0	
6	U5	IC.SMD BGA 196P.GigaBit Ethernet Chipset.INTEL.RC82541GI		39.1	
7	U4	IC.SMD LQFP 48Pin.6 Channel AC'97 Audio Codec.REALTEK.ALC655		36.6	
8	U15	IC.SMD SSOP.RS232 Driver ESD 15KV.INTERMIL.HIN213ECA-T		32.5	
9	U14	IC.SMD SSOP.RS232 Driver ESD 15KV.INTERMIL.HIN213ECA-T		31.7	
10	U8	IC.SMD LQFP 48Pin.Touch Screen Controller.鑫科.ETP-CP-5R01		35.9	
11					
12					
13					
14					
15		The Room Temperature		21.8	

Operation Temperature ( ):

Ts = Defined by component specification ; Tm = Measured by QE

## Temperature Profile Test:

Solder Side:



Point	Position	Describe	Ts	Tm( )	Note
1	Q30	PNP.SMD.SOT-223.1Amp.ON.BCP69T1		37.2	
2	Q29	PNP.SMD.SOT-223.1Amp.ON.BCP69T1		39.7	
3	TC24	SP CAP.150uF.6.3V.20%.D(7.3*4.3*2.8mm).18mOhm SMD.Panasonic.ECGUD0J151R		32.9	
4	U30	IC.SMD.IT8712F 128P Super I/O.ITE.IT8712F/GX		34.6	
5	U35	IC.SMD TSSOP-28.Dual Power Supply Controller. SEMTECH.SC1485ITSTR		32.2	
6	Q33	IC.SMD SO-8.1.5A.Low Dropout Regulator.Adj(1.2~4.8V).SEMTECH.SC1565IS		35.6	
7	U25	IC.SMD.3.3V 1K bits.Microchip.93LC46B/SN		35.7	
8	U26	IC.SMD.3.3V 1K bits.Microchip.93LC46B/SN		35.3	
9	U31	IC.SMD SOP.8Pin Switching PWM Controller.IR.IRU3037CS		31.0	
10	U40	IC.SMD MLP-18.Complete DDR Power Solution.SEMTECH.SC2616ML		34.7	
11	Q43	PWR.SMD.TO-252.N-Channel Power 25V 60A MOSFET.APEC.AP70T03H		32.3	
12	Q42	PWR.SMD.TO-252.N-Channel Power 30V 55A MOSFET.APEC.AP60N03H		32.4	
13	Q40	PWR.SMD.TO-252.N-Channel Power 25V 60A MOSFET.APEC.AP70T03H		32.3	
14	Q39	PWR.SMD.TO-252.N-Channel Power 30V 55A MOSFET.APEC.AP60N03H		31.7	
15		The Room Temperature		21.8	

Operation Temperature ( ):

Ts = Defined by component specification ; Tm = Measured by QE