

HSB-910I

Intel 910GMLE ISA Half-Size SBC

Thermal Image Analysis Report

Report NO: 09I080002

Release Date: Feb 13 2009

2009/2/13

Issue Stamp

Wenyuan Yang

Manager

Anderson Lin

Test Engineer

Thermal Image Analysis

I . Model Name: HSB-910I A0.2

II . Description: Intel 910GMLE ISA Half-Size SBC

III . Date: Feb 13 2009

IV . Measure Site: AAEON QE Dept.

V . Issued by : Anderson Lin

VI. Equipment:

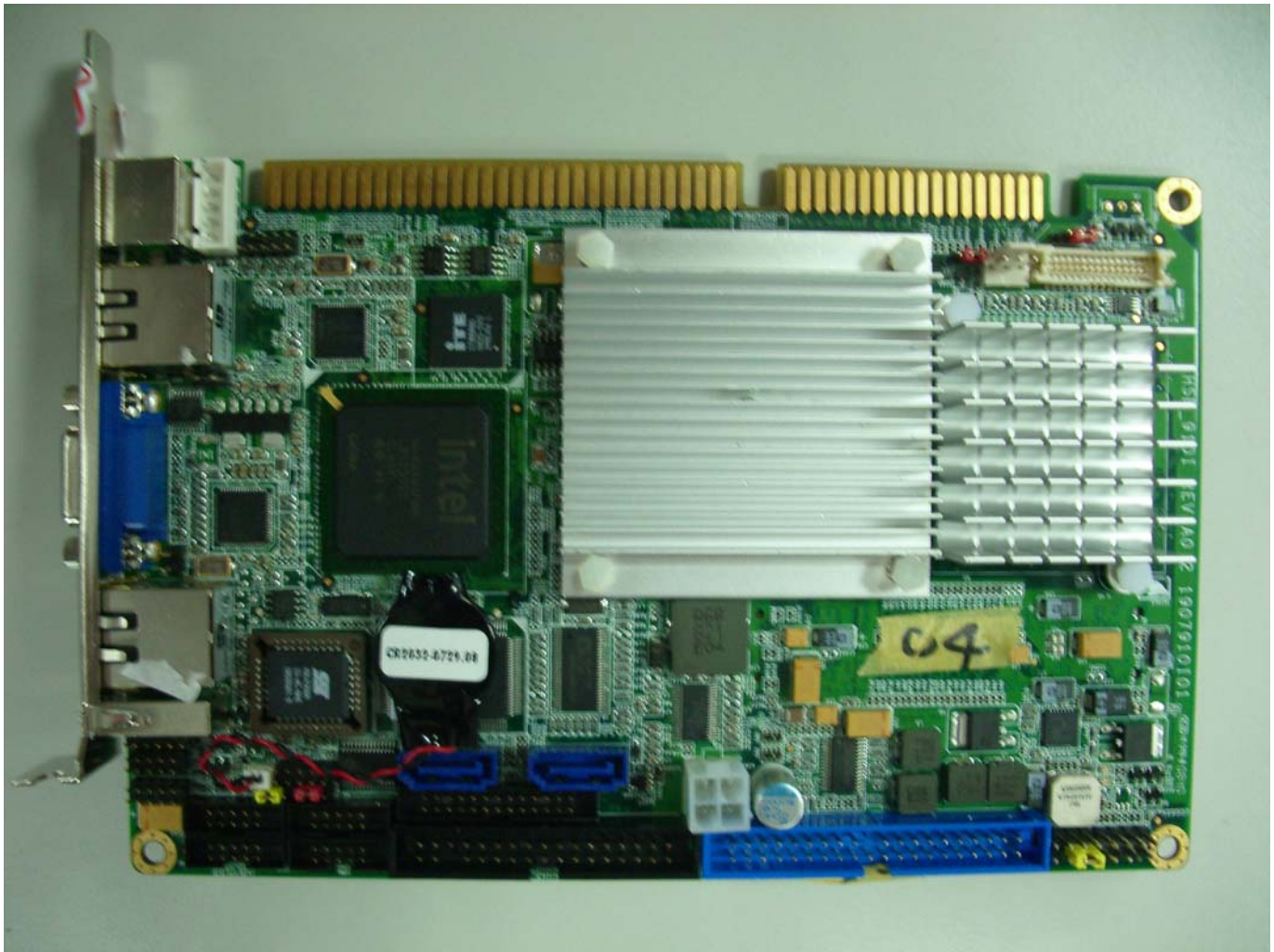
TVS-100 series by NIPPON AVIONICS CO., LTD.

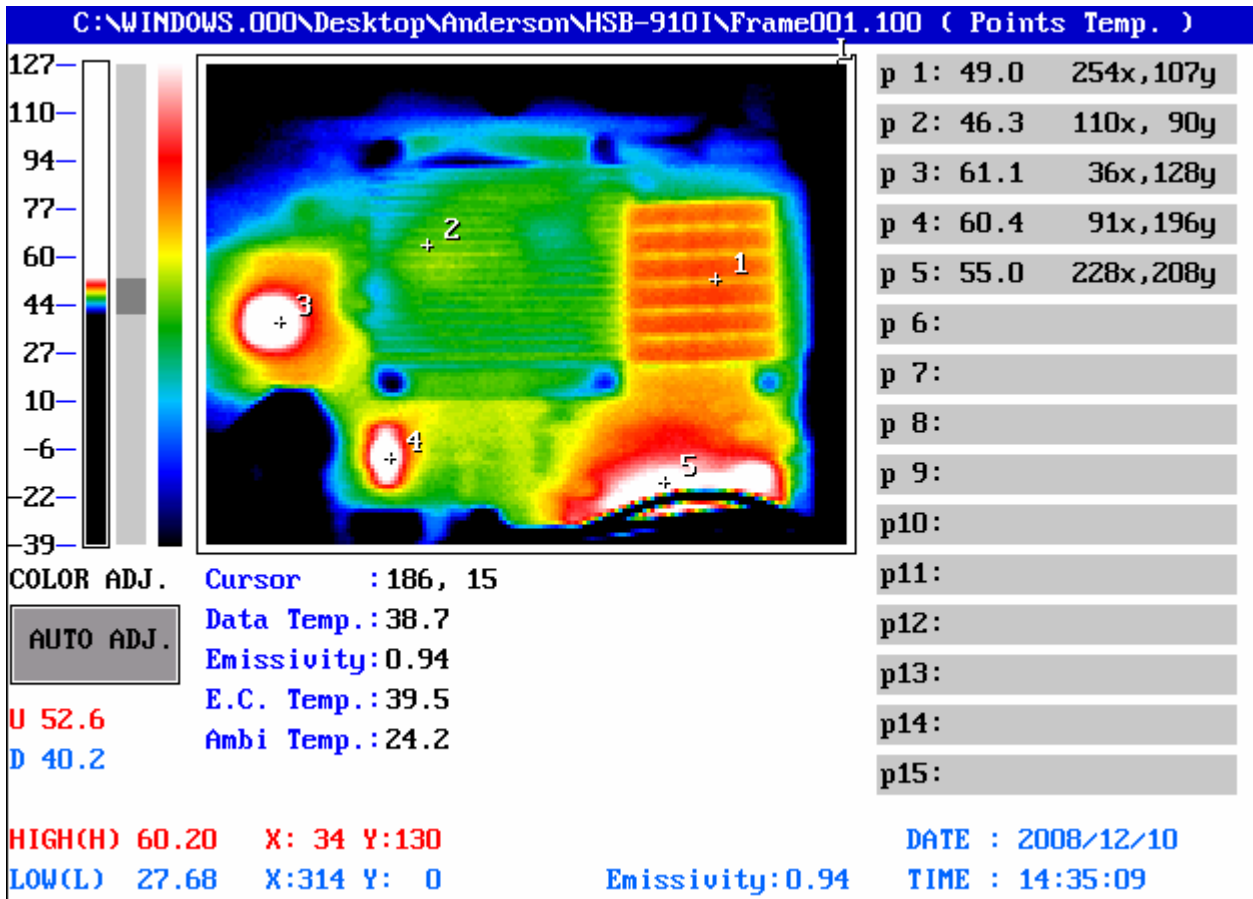
VII. Simulation Environment:

- **Temperature: Component Side-1 : 24.2°C , Component Side-2 : 24.2°C**
- **CPU : Intel Celeron M Baniyas processor 600MHz**
- **RAM : Transcend DDR2-533 512MB (hynix HY5PS12821A FP-C3)**
- **BIOS : HSB-910I BIOS Rev 0.8 (11/04/2008)**
- **CF Card : N/A**
- **HDD : Seagate 3.5" SATA II ST380815AS 80GB HDD**
- **Application Software: Run Prime95 under Windows XP Professional Service Pack 3**
- **Take Picture Time: After Power on 2 hours.**

Temperature Profile Test:

Component Side-1:

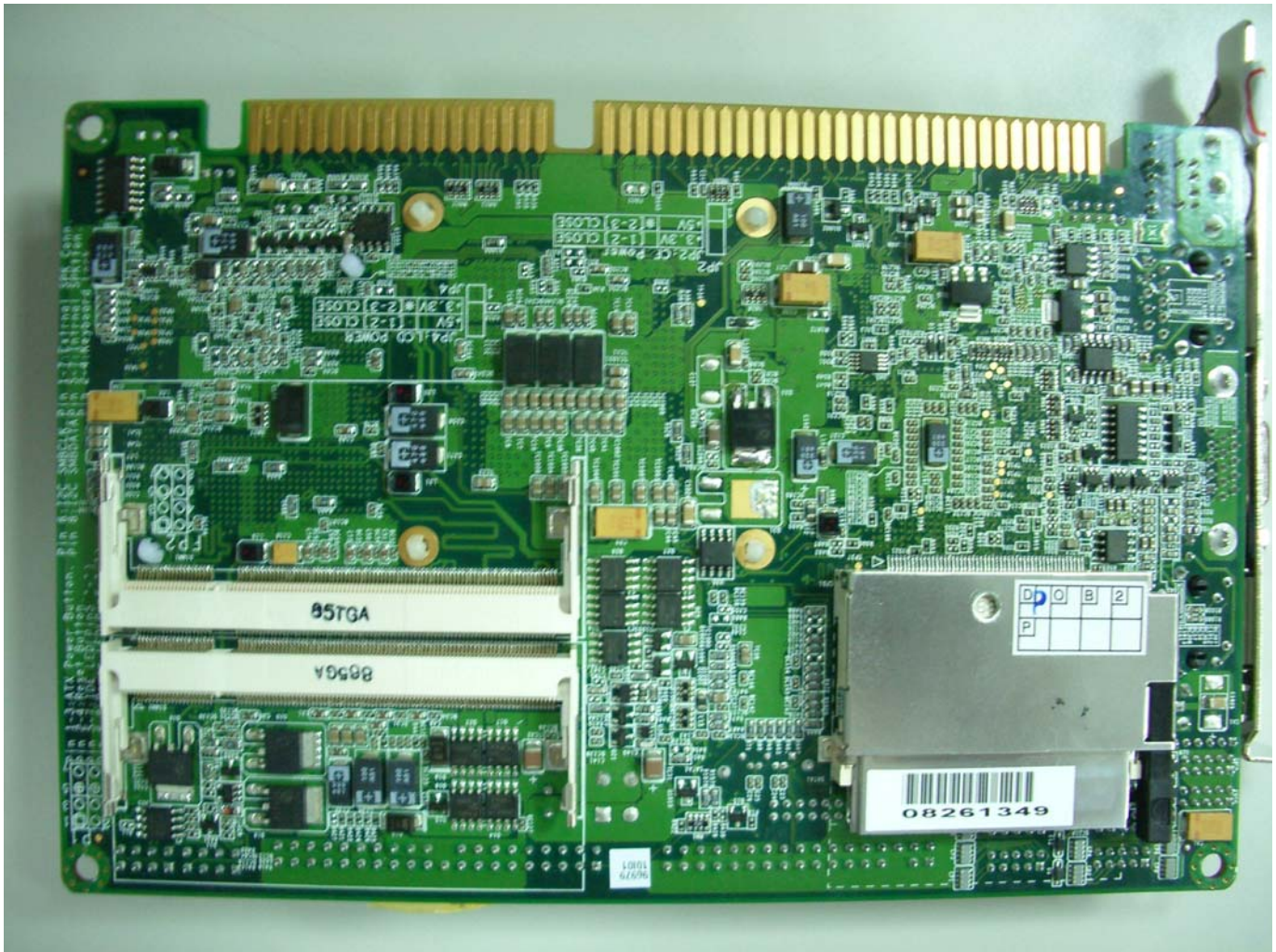


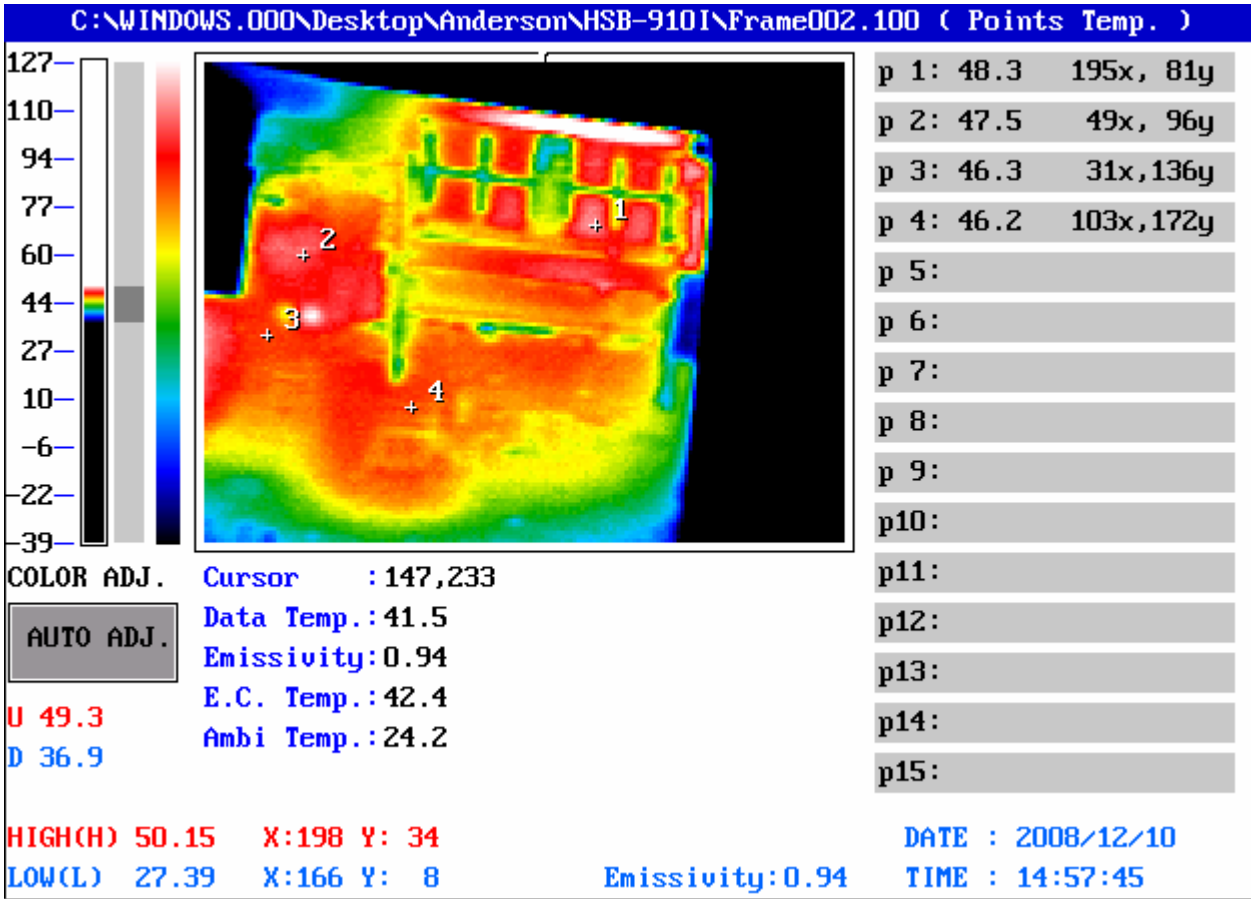


Point	Position	Describe	Tc (°C)	Tm (24.2°C)	Tm (60°C)	Note
1	U3	(TF)IC.SMD.Chipset Alviso 910GMLE.Intel.QG82910GMLE SLA9L	133	49.0	84.8	
2	U16	(TF)INTEL CPU.Celeron-M.ULV-600MHz.512K cache.mFCBGA479.LE80535VC600512	125	46.3	82.1	
3	U20	(TF)IC.SMD TFBGA.160P.PCI to ISA Bridge Chip.ITE.IT8888G-L	100	61.1	96.9	
4	U28	(TF)IC.SMD SOP.8Pin Switching PWM Controller. IR.IRU3037CSPbF;EE-A020732;14S2303700;TWN	125	60.4	96.2	
5	U30	(TF)Dual N-Channel.SMD SO-8.2.5V MOSFET.APEC.AP9926GM;EE-A030055;1315992601;TWN	125	55.0	90.8	

1. Tm (Measured operation temperature) must be less than Tc (Specified case temperature) +5 degree C
 2. Any Tm value showed in red words which meaning the value is over the Tc+ 5 degree C of this device specification

Component Side-2:





Point	Position	Describe	Tc (°C)	Tm (24.2°C)	Tm (60°C)	Note
1	RAM	Transcend DDR2-533 512MB (hynix HY5PS12821A FP-C3)	----	48.3	84.1	
2	CFD1	(TF)Compact Flash Header.25*2P.90D.SMD.1.27mm pitch.for TypeII.SPEED TECH.N016@0140-004;EE-A051635;1653925216;TWN	90	47.5	83.3	
3	U44	(TF)IC.SMD.SOIC 14P.TI.SN74LVC14ADR	155	46.3	82.1	
4	C172	(TF)SP CAP.150uF.6.3V.20%.D(7.3*4.3*2.8mm).18mOhm SMD.Panasonic.ECGUD0J151ER	105	46.2	82	

1. Tm (Measured operation temperature) must be less than Tc (Specified case temperature) +5 degree C
2. Any Tm value showed in red words which meaning the value is over the Tc+ 5 degree C of this device specification