



HSB-835A

Thermal Image Analysis Report

Report No: 05I080001

Release Date: Jan. 13, 2005

2005-01-13

Issue Stamp

Wenyuan Yang

Manager

Andrew KU

Test Engineer

I . Model Name: HSB-835A

**II . Description: Half-Size APCI CPU Card. Socket 478 Pentium 4 Processor CPU Card.
with VGA / one Ethernet / Audio / CFD / 7 USB**

III . Date: Jan. 13, 2005

IV . Measure Site: AAEON QE Dept.

V . Issued by: Andrew Ku

VI.Equipment:

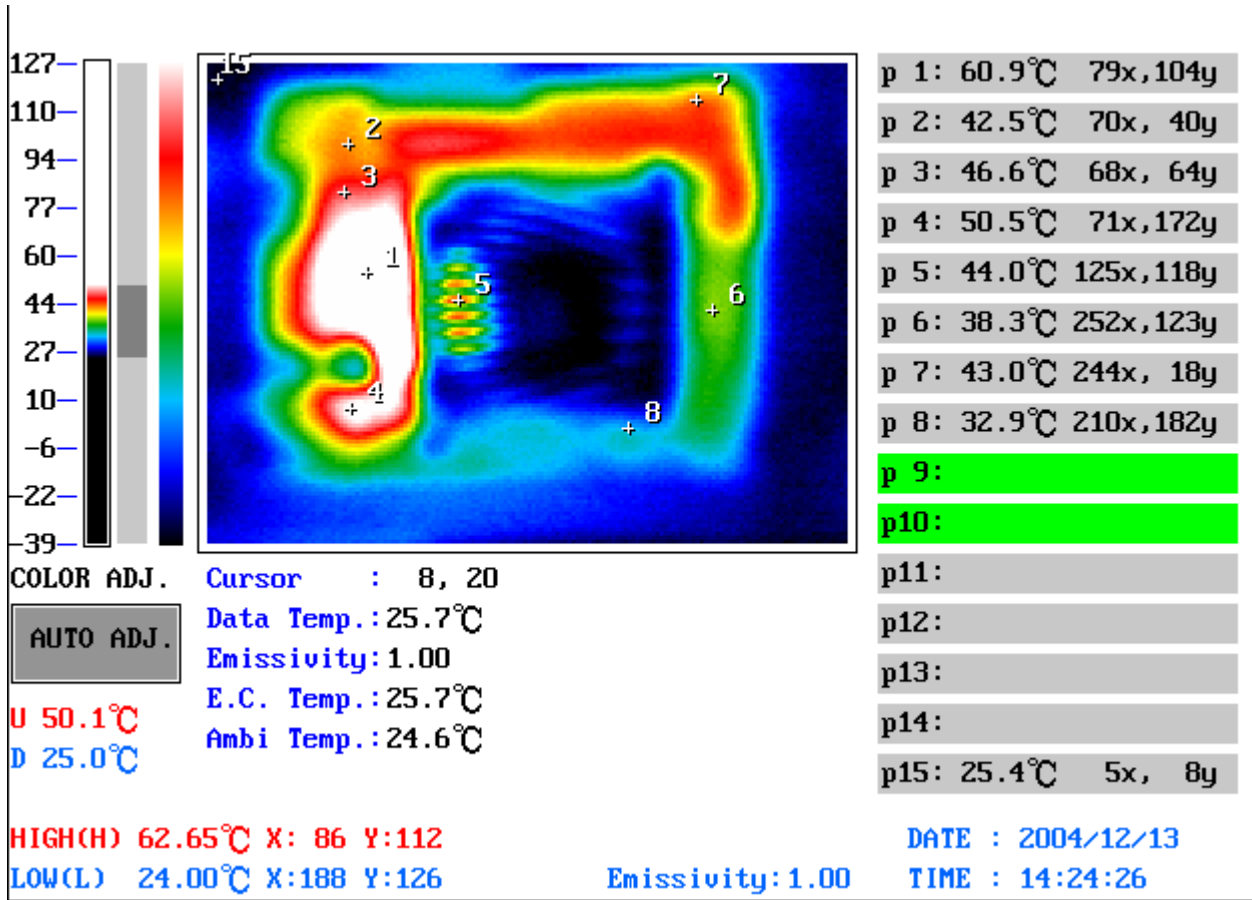
1. TVS-100 series by NIPPON AVIONICS CO., LTD.

VII. Simulation Environment:

- **Temperature: 25.4 degrees C**
- **System Configuration : HSB-835A A0.2(BIOS ver : 1.0)**
 - CPU: Intel / Pentium 4 CPU 3.20GHz(200*16.0)**
 - Memory: SAMSUNG /K4H560438E-GCCC / DDR400 /1GB**
 - HDD: Seagate ST31276A**
- **Application Software: Windows 2000 run HCT9.5**
- **Take Picture Time: Power on 2 hours after**

Temperature Profile Test:

Component Side – 1:



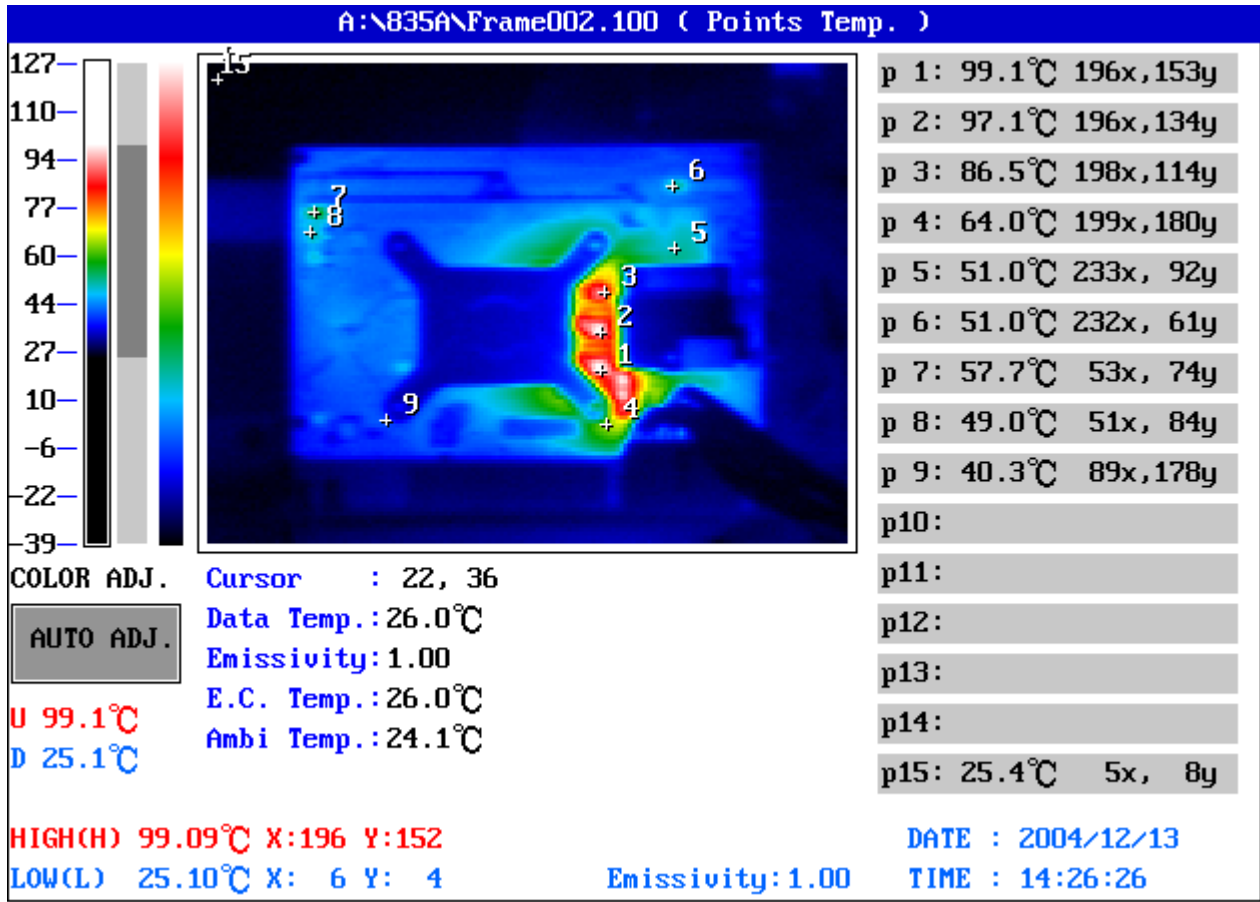
Point	Position	Describe	Ts	Tm	Note
1	U11	IC.SMD.Chipset ICH5.INTEL.FW82801EB SL73Z		60.9°C	
2	U5	IC.SMD.PLCC 32Pin FWH(4MB).SST.49LF004A		42.5°C	
3	U8	IC.SMD.SOP.TI.7407		46.6°C	
4	U17	IC.SMD.SOIC 8P.Ultra Low Dropout Regulator.IR.IRU1150CS		50.5°C	
5	L11	COIL.1.0uH.SMD.12.9*12.9*5mm.DCR=2.1mohm.Idc=29Amp.VISHAY		44.0°C	
6	U13	IC.SMD.FC-BGA932.GMCH.INTEL.82865GV SL77X		38.3°C	
7	BZ1	Buzzer.SMD.5V.80mA.90dB.KINGSTATE.KSS-J4D26		43.0°C	
8	U16	IC.SMD.SSOP 48Pin Clock Generator.ICS.ICS952607		32.9°C	
9					
10					
11					
12					
13					
14					
15		The Room Temperature		25.4°C	

1. Operation Temperature (°C):

Ts = Defined by component specification ; Tm = Measured by QE

Note: The description in red states which temperature is over the specification of the device.

Component Side -2:



Point	Position	Describe	Ts	Tm	Note
1	Q16	PWR.SMD.TO-252 N-Channel PowerMosfet.AOS.		99.1°C	
2	Q14	PWR.SMD.TO-252 N-Channel PowerMosfet.AOS.		97.1°C	
3	Q12	PWR.SMD.TO-252 N-Channel PowerMosfet.AOS.		86.5°C	
4	U31	IC.SMD.SOIC 28Pin PWM Controller.Intersil.ISL6556BCB		64.0°C	
5	U24	IC.SMD.PQFP 128Pin LPC SuperI/O.Winbond.W83627HF-AW A version		51.0°C	
6	U19	IC.SMD.28Pin QSOP Parallel Term.CMD.Super 1284-04Q		51.0°C	
7	Q23	PWR.SMD.TO-252 N-Channel PowerMosfet.AOS.AOD414		57.7°C	
8	Q22	PWR.SMD.TO-252 N-Channel PowerMosfet.AOS.AOD412		49.0°C	
9	C122	SMD.Panasonic.EEFSX0D221YR		40.3°C	
10					
11					
12					
13					
14					
15		The Room Temperature		25.4°C	

1. Operation Temperature (°C):

Ts = Defined by component specification ; Tm = Measured by QE

Note: The description in red states which temperature is over the specification of the device.