

GENE-9455

Intel Navy Pier (Diamondville) subcompact Board

Thermal Image Analysis Report

Report NO: 09E080002

Release Date: 12/16/2008

2008/12/16

Issue Stamp

Wenyuan Yang

Manager

Echo Chang

Test Engineer

Thermal Image Analysis

I . Model Name: GENE-9455 Rev:A0.2

II . Description: Intel Navy Pier (Diamondville) subcompact Board

III . Date: 2008/12/16

IV . Measure Site: AAEON QE Dept.

V . Issued by : Echo Chang

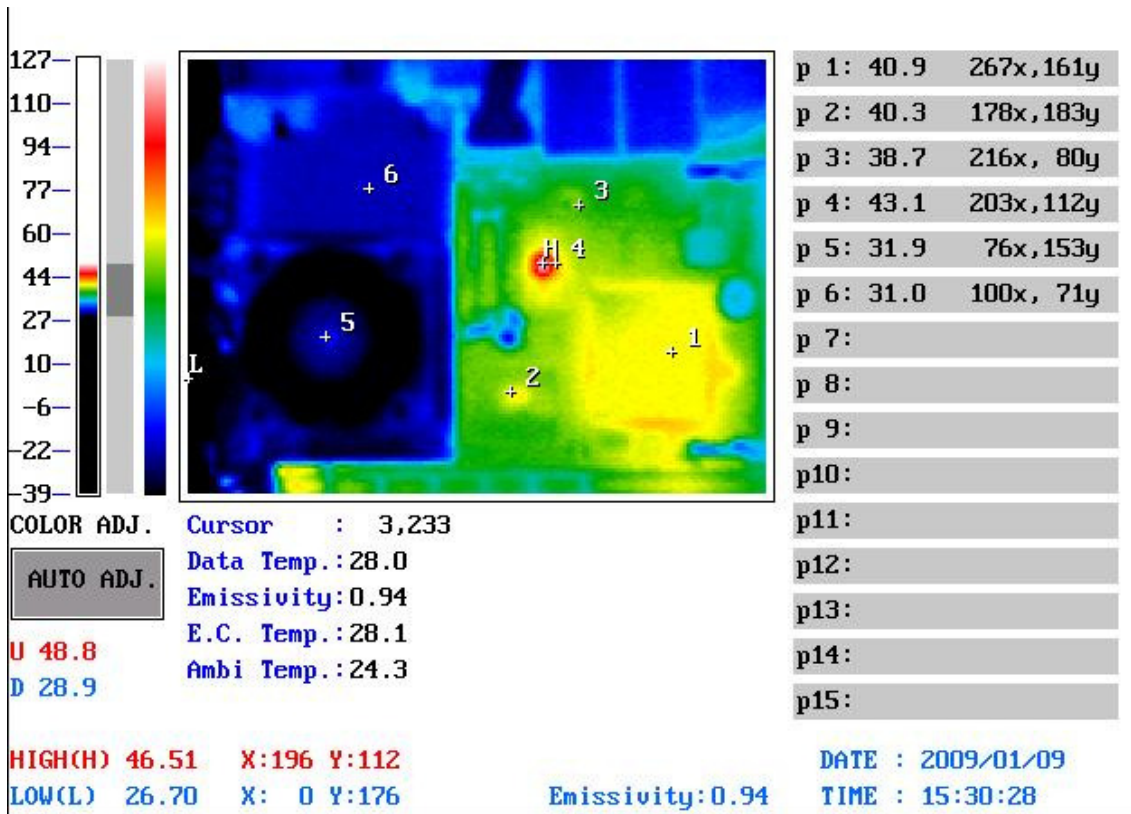
VI.Equipment:

TVS-100 series by NIPPON AVIONICS CO., LTD.

VII. Simulation Environment:

- Temperature: Component Side-1 : 24.3°C , Component Side-2 : 23.8°C
- CPU : Intel Navy Pier (Diamondville) 1.6GHZ(N270)
- RAM : KingMax KSBP48F-8KB4KingMax KSBP48F-8KB4 1GB-DDR2-533
- BIOS : 9455_042.bin 11/24/2008
- CF Card : N/A
- HDD : HITACHI IDE H.D 20Gb HTS424020M9AT00
- Application Software: Run Prime95 under Windows XP Professional V2002 Service Pack 3
- Take Picture Time: After Power on 2 hours.

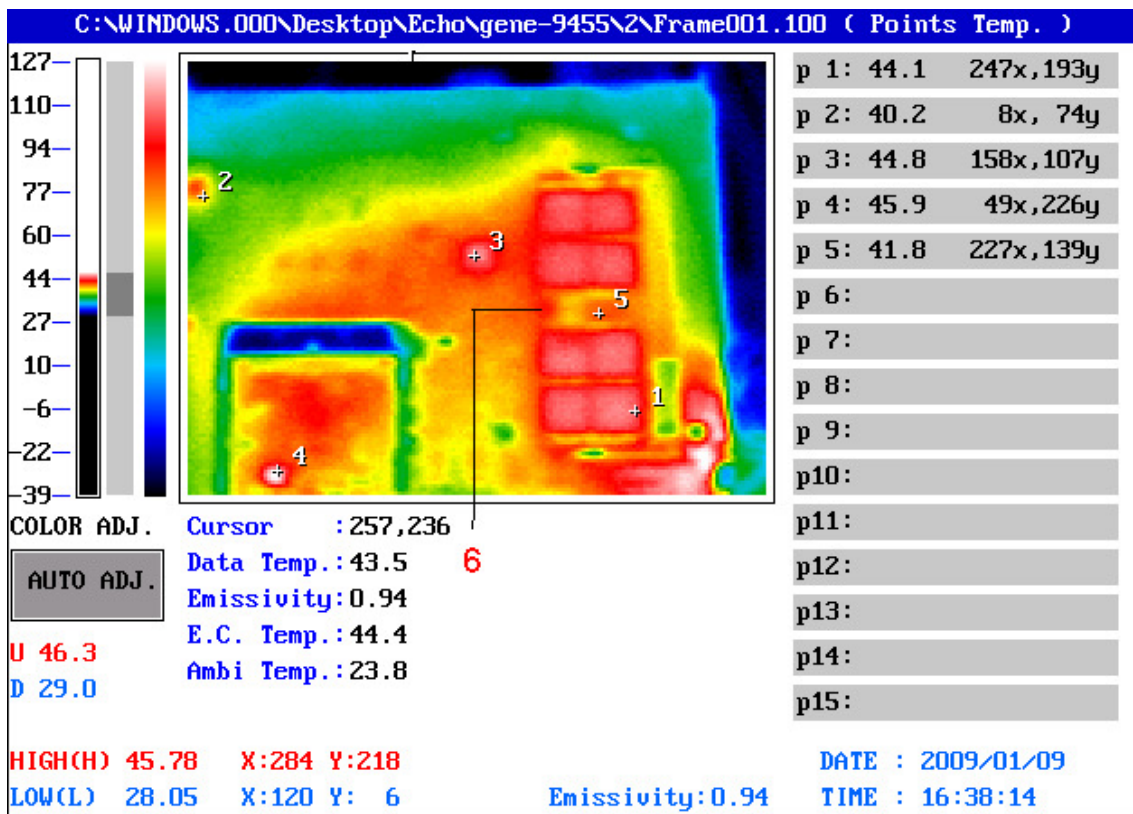
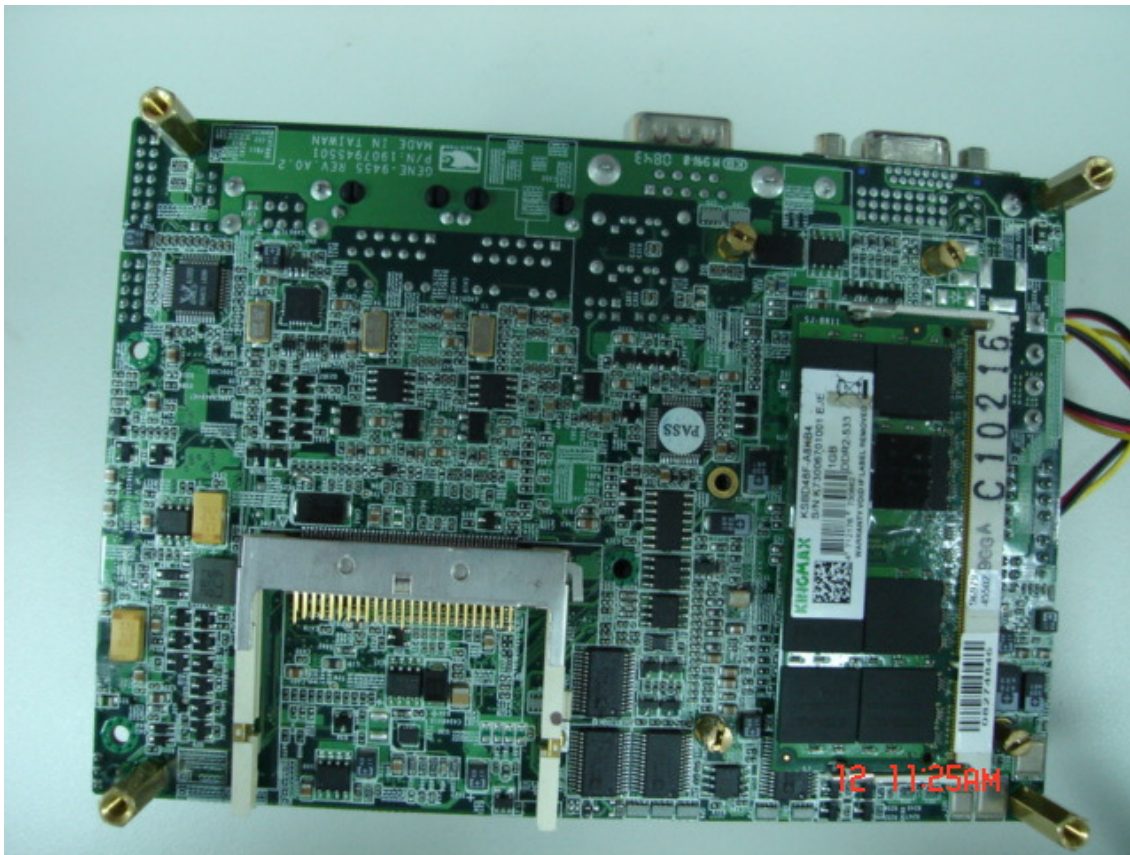
**Temperature Profile Test:
Component Side-1:**



Point	Position	Describe	Tc (°C)	Tm (24.3 °C)	Tm (60°C)	Note
1	U4	(TF)IC.SMD.Chipset ICH7M.Intel.NH82801GBM SL8YB;EE-A060320;14S428010D;TWN	99	40.9	76.6	
2	U9	(TF)IC.SMD.QFP128P.Super I/O w/4 COMs.ITE.IT8781F/AX-L;EE-A081754;14S4878100;TWN	100	40.3	76	
3	U7	(TF)IC.SMD.QFN 64P.PCI-E GigaBit Ethernet Chipset.Intel.WG82574L SLBA8	109	38.7	74.4	
4	U3	(TF)IC.SMD.TSSOP 64P.CLOCK GENERATOR.IDT.9LPRS501PGLF	100	43.1	78.8	
5	U13	(TF)IC.SMD.Intel 945GSE Express Chipset.Intel.QG82945GSE SLB2R	105	31.9	67.6	
6	U14	(TF)Intel CPU.Diamondville.N270.1.6GHz/FSB 533MHz.FCBGA8.437Pins.STEPPING CODE:SLB73.AU80586GE025D	115	31	66.7	

1. Tm (Measured operation temperature) must be less than Tc (Specified case temperature) +5 degree C
2. Any Tm value showed in red words which meaning the value is over the Tc+ 5 degree C of this device specification

Component Side-2:



Point	Position	Describe	Tc (°C)	Tm (23.8 °C)	Tm (60°C)	Note
1	SODIMM DDR2	KingMax KSBP48F-8KB4KingMax KSBP48F-8KB4 1GB-DDR2-533 (chipset)	95	44.1	80.3	
2	U46	(TF)IC.SMD LQFP 48Pin.6 Channel AC'97 Audio Codec.REALTEK.ALC655-LF	100	40.2	76.4	
3	U26	(TF)IC.SMD LQFP.48P.DVI Transmitter.CHRONTEL.CH7307C-DEF;EE-A050797;14S4730701;TWN	85	44.8	81	
4	U40	(TF)IC.SMD SO-8.1.5A.Low Dropout Regulator.Adj(1.2~4.8V).SEMTECH.SC1565IS-TRT	115	45.9	82.1	
5	SODIMM DDR2	KingMax KSBP48F-8KB4KingMax KSBP48F-8KB4 1GB-DDR2-533 (PCB)	95	41.8	78	
6	SODIMM DDR2	KingMax KSBP48F-8KB4KingMax KSBP48F-8KB4 1GB-DDR2-533 (Inside of chipset)	95	46.3	82.5	

3. Tm (Measured operation temperature) must be less than Tc (Specified case temperature) +5 degree C
4. Any Tm value showed in red words which meaning the value is over the Tc+ 5 degree C of this device specification