

GENE-9310

Thermal Image Analysis Report

Report No:06E080036

Release Date: 22 / 09 / 2006

2006-09-22

Issue Stamp

Wenyuan Yang

Manager

Andrew Ku

Test Engineer

I . Model Name: GENE-9310 A0.2

II . Description: Intel Yonah Celeron M Sub Compact Board

III . Date: 22 / 09 / 2006

IV . Measure Site: AAEON QE Dept.

V . Issued by: Andrew Ku

VI.Equipment:

1. TVS-100 series by NIPPON AVIONICS CO., LTD.

VII. Simulation Environment:

• **Temperature:**

Component Side – 1: 25.2degrees C

Solder Side – 2: 25.8degrees C

• **System Configuration :**

BIOS ver :0.5

CPU: Genuine IntelT2600@2.16GHz

Memory: KINGMAX / ELPIDA/E5108AB-5C-E /512MB / SODDR2-533

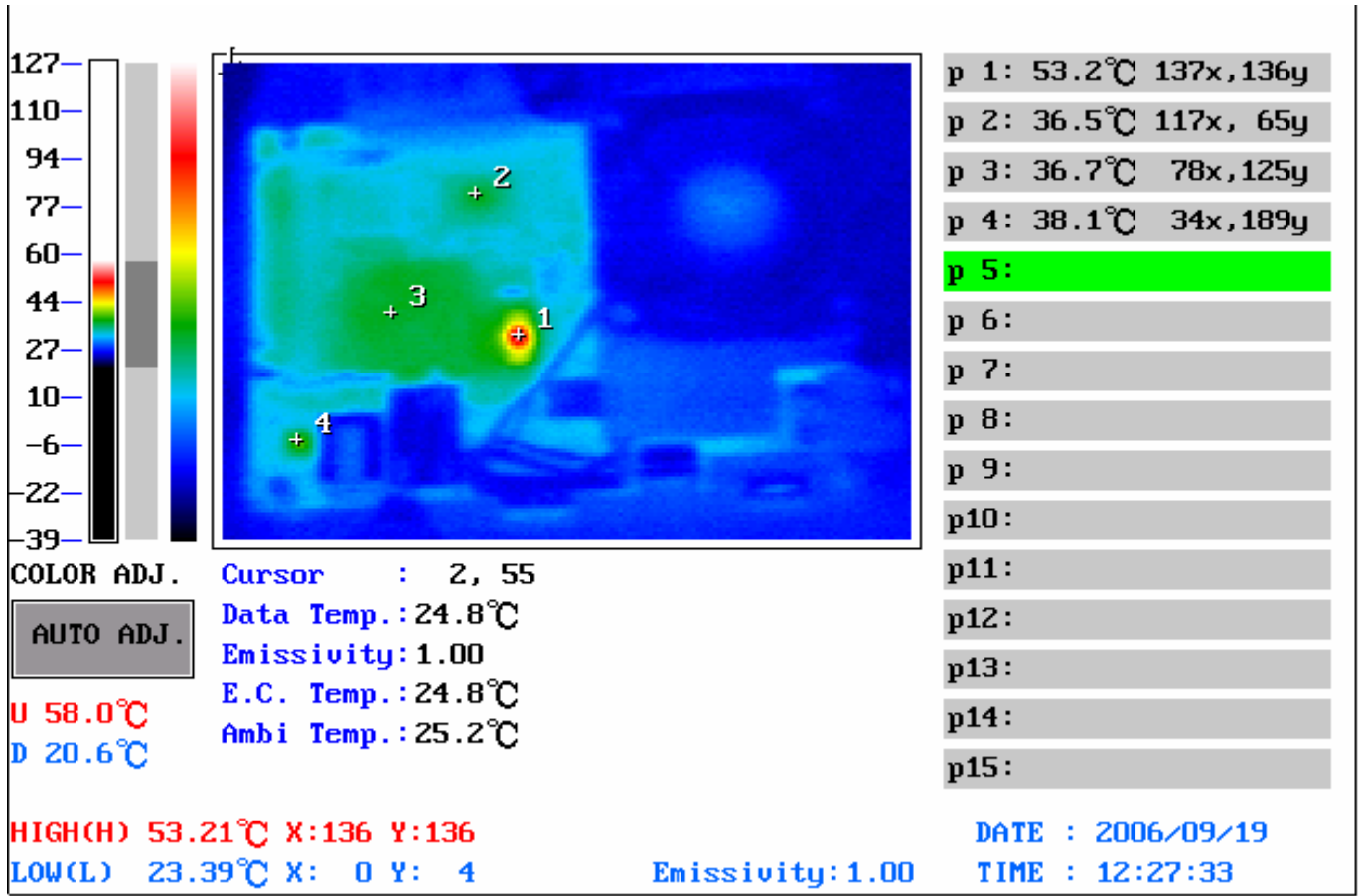
HDD: MAXTOR 80GB

• **Application Software: Windows XP run HCT9.5**

• **Take Picture Time: After power on 2 hours .**

Temperature Profile Test:

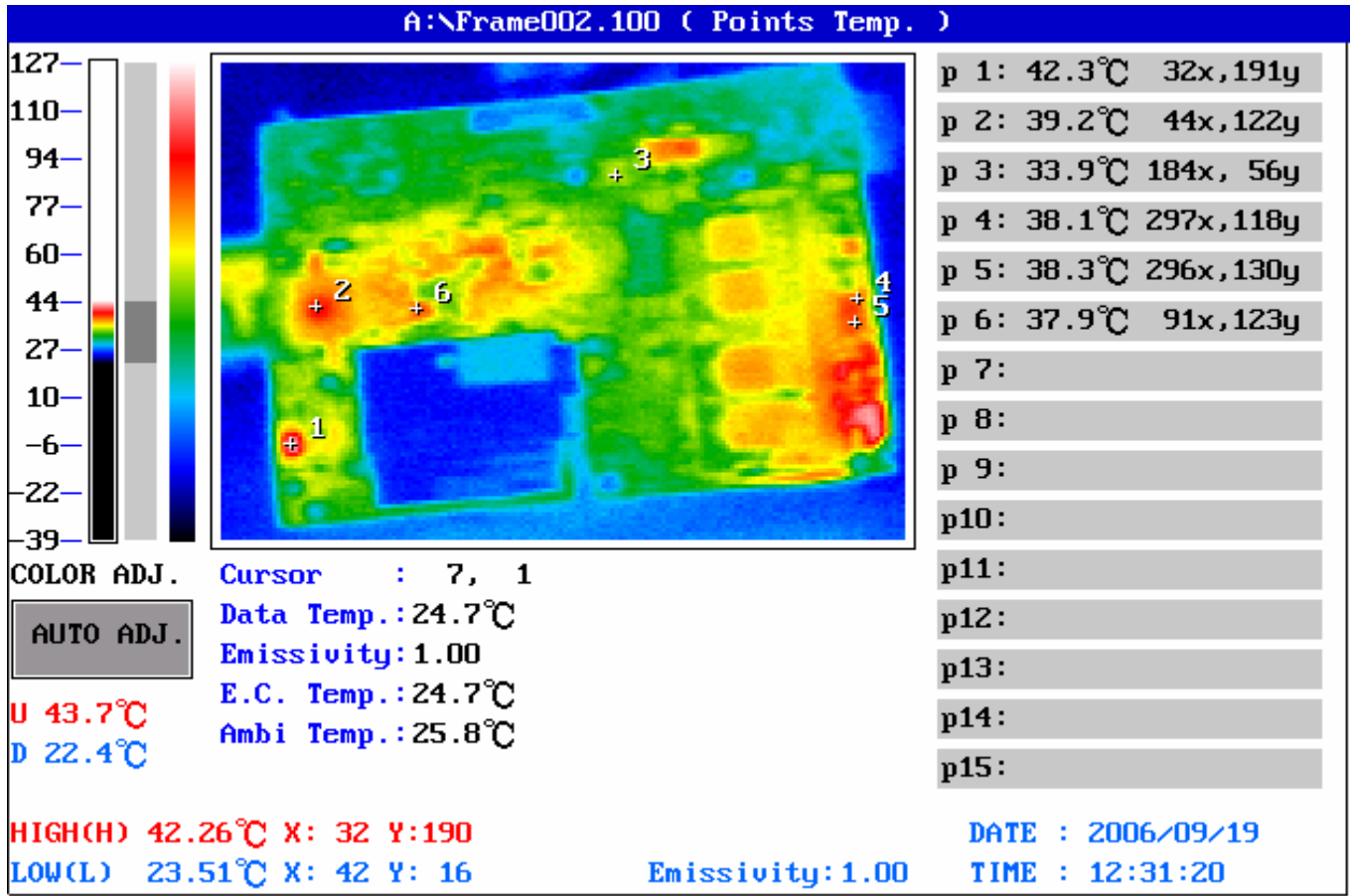
Component Side – 1:



Point	Position	Describe	Tc	Tm (25°C)	Tm (60°C)	Note
1	U10	(TF)IC.SMD.TSSOP 56P.CLOCK GENERATOR.ICS.ICS954226AGLF	-30°C~100°C	53.2°C	88.2°C	
2	U4	(TF)IC.SMD.QFP128P Super I/O.ITE.IT8712F/KX-L	-30°C~100°C	36.5°C	71.5°C	
3	U15	(TF)IC.SMD.Chipset ICH7M.Intel.NH82801GBM SL8YB	--40°C~75°C	36.7°C	71.7°C	
4	U1	(TF)IC.SMD LQFP 48Pin.6 Channel AC'97 Audio Codec.REALTEK.ALC655-LF	-30°C~100°C	38.1°C	73.1°C	
5						
6						
7						
8						
9						
10						
11						
12						
13						
14						
15		Ambient Temperature		25.2°C		

1. Tm (Measured operation temperature) must be less than Tc (Specified case temperature) +5 degree C
2. Any Tm value showed in red words which meaning the value is over the Tc+ 5 degree C of this device specification

Component Side -2:



Point	Position	Describe	Tc	Tm (25°C)	Tm (60°C)	Note
1	U13	(TF)IC.SMD SO-8.1.5A.Low Dropout Regulator.Adj(1.2~4.8V).SEMTECH.SC1565IS-TRT	-10°C~115°C	42.3°C	77.3°C	
2	U49	(TF)IC.SMD.BGA 196P.GigaBit Ethernet Chipset.Intel.PC82573L	-30°C~100°C	39.2°C	74.2°C	
3	U19	(TF)IC.SMD.QFN 48P.IMVP6 Two Phase PWM.Intersil.ISL6262CRZ-T	-10°C~100°C	33.9°C	68.9°C	
4	C760	(TF)POSCAPCAP.470uF.6.3V.20%.D4(7.3*4.3*3.8mm).18mOhm.SMD.SAN YO.6TPE470MI	-55°C~105°C	38.1°C	73.1°C	
5	C774	(TF)KO-CAP.330uF.6.3V.20%.D(7.3*4.3*2.8mm).45mOhmSMD.KEMET.T5 20D337M006ASE045	-55°C~105°C	38.3°C	73.3°C	
6	C144	(TF)MCC.0.1uF.16V.10%.X7R.0402 SMD	0°C~100°C	37.9°C	72.9°C	
7						
8						
9						
10						
11						
12						
13						
14						
15		Ambient Temperature		25.8°C		

1. Tm (Measured operation temperature) must be less than Tc (Specified case temperature) +5 degree C
 2. Any Tm value showed in red words which meaning the value is over the Tc+ 5 degree C of this device specification