

GENE-8315

Intel ULV Celeron M SubCompact Board

Thermal Image Analysis Report

Report NO: 08E080016

Release Date: 7/21/2008

2008/07/21

Issue Stamp

Wenyuan Yang

Manager

Allen Hsu

Test Engineer

Thermal Image Analysis

I . Model Name: GENE-8315 Rev:A1.0

II . Description: Intel ULV Celeron M SubCompact Board

III . Date: 2008/07/21

IV. Measure Site: AAEON QE Dept.

V. Issued by : Allen Hsu

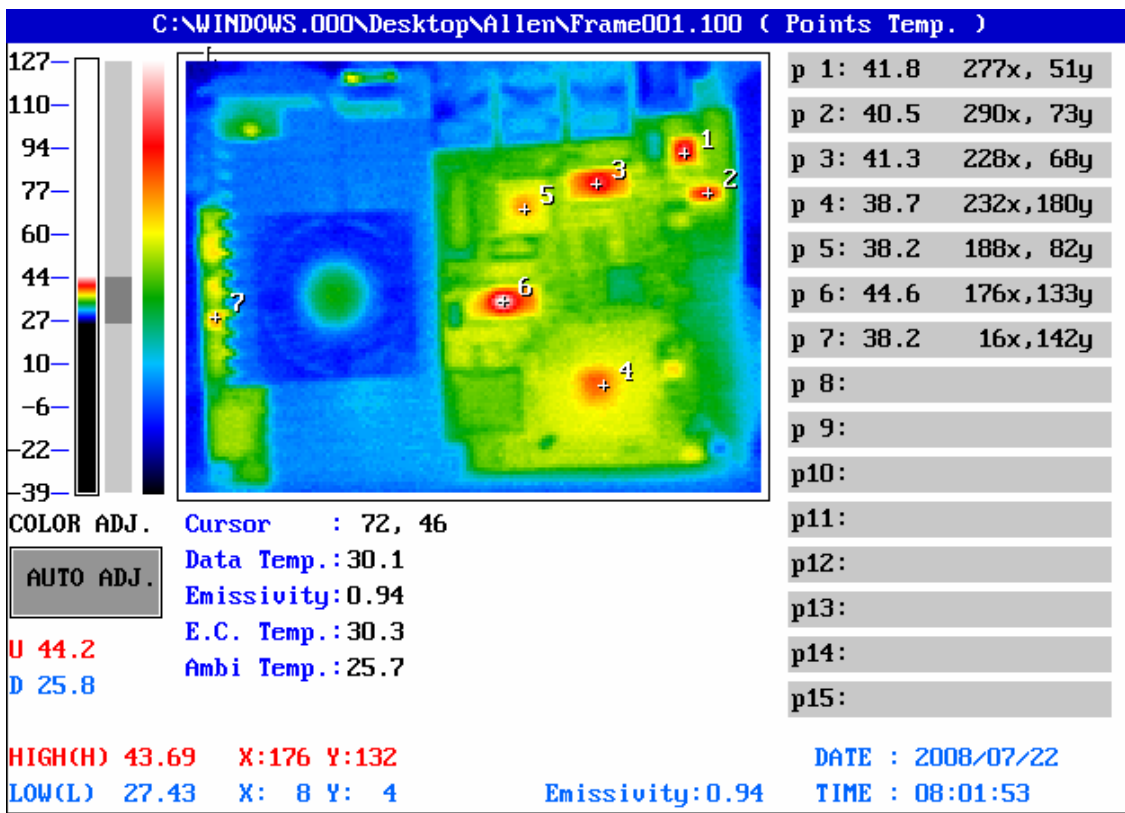
VI. Equipment:

TVS-100 series by NIPPON AVIONICS CO., LTD.

VII. Simulation Environment:

- Temperature: Component Side-1 : 25.7°C , Component Side-2 : 25.0°C
- CPU : Onboard CPU-Intel Celeron M 1.00GHz
- RAM : Transcend DDR SO-DIMM 256Mb DDR333
- BIOS : GENE-8315 BIOS Rev 1.0(6/13/2008)
- CF Card : N/A
- HDD : HITACHI IDE H.D 20Gb HTS424020M9AT00
- Application Software: Run Prime95 under Windows XP Professional V2002 Service Pack 3
- Take Picture Time: After Power on 2 hours.

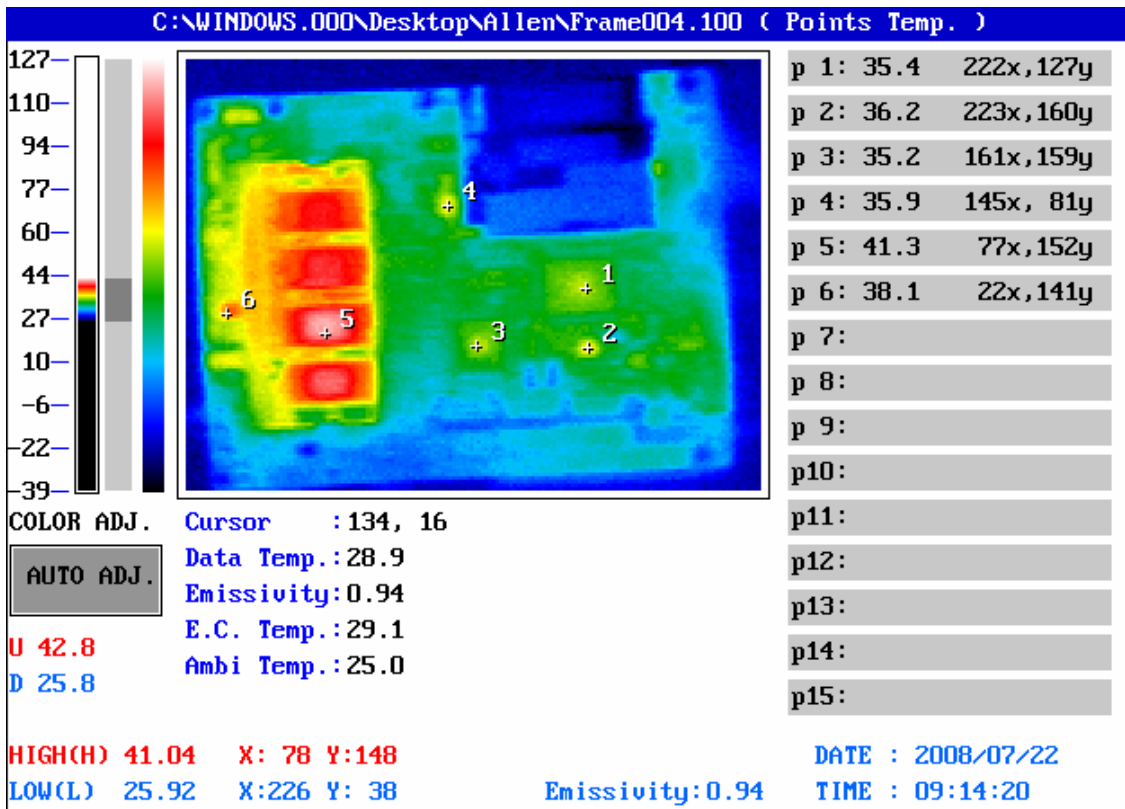
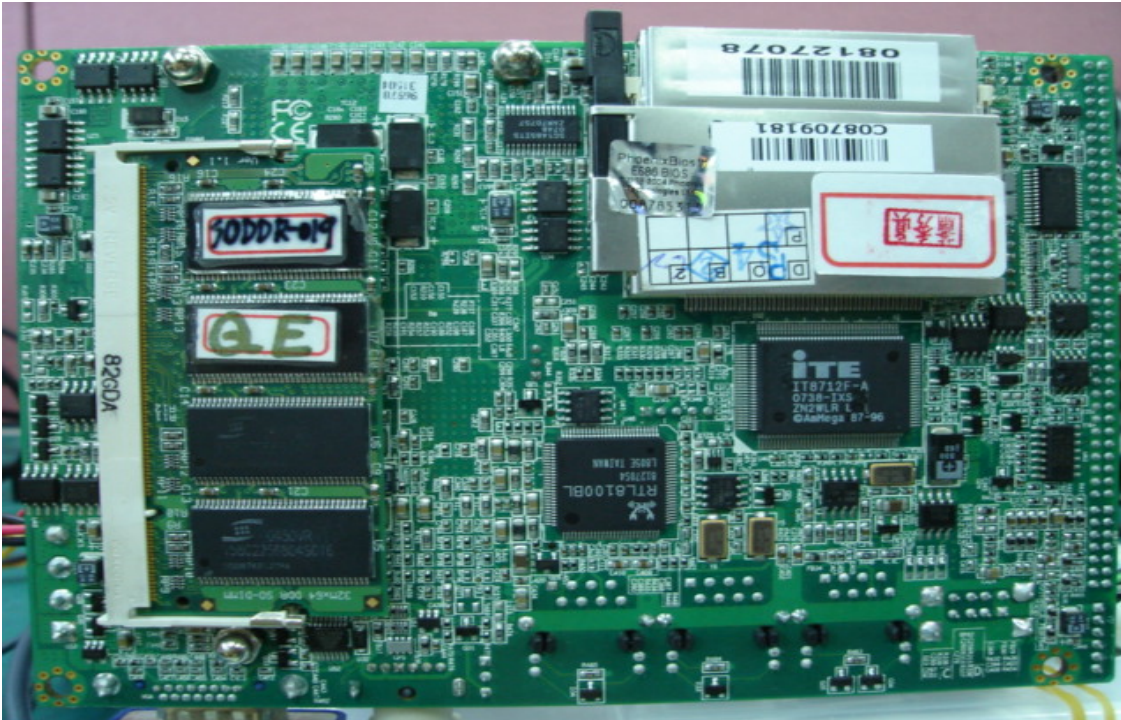
Temperature Profile Test: Component Side-1:



Point	Position	Describe	Tc (°C)	Tm (25.7 °C)	Tm (60°C)	Note
1	U18	(TF)IC.SMD.LQFP 48Pin.6 Channel AC'97 Audio Codec.REALTEK.ALC655-LF;EE-A040125;14S3065500;TWN	100	41.8	76.1	
2	U13	(TF)IC.SMD.SOIC 14P.TLSN7406DR;EE-A020052;14S5900600;TWN	100	40.5	74.8	
3	U17	(TF)IC.SMD.SSOP48 Chipset.INTEL.EP82562ET;EE-A000456;14S4256200;TWN	150	41.3	75.6	
4	U3	(TF)IC.SMD.Chipset ICH4.INTEL.NH82801DB SL8DE;EE-A031271;14S4280106;TWN	---	38.7	73	
5	U16	(TF)IC.SMD.LQFP 100P.PCI Ethernet CHIP.RELTEK.RTL8100BL-LF;EE-A050559;14S4810002;TWN	125	38.2	72.5	
6	U6	(TF)IC.SMD.SSOP 56P.CLOCK GENERATOR.ICS.ICS952601FLFT;EE-A040124;14S3260100;TWN	150	44.6	78.9	
7	U5	(TF)IC.SMD.TSSOP 38P.IMVP4 Single Phase PWM.Intersil.ISL6218CVZ;EE-A041734;14S4621800;TWN	85	38.2	72.5	

1. Tm (Measured operation temperature) must be less than Tc (Specified case temperature) +5 degree C
 2. Any Tm value showed in red words which meaning the value is over the Tc+ 5 degree C of this device specification

Component Side-2:



Point	Position	Describe	Tc (°C)	Tm (25.0 °C)	Tm (60°C)	Note
1	U40	(TF)IC.SMD.IT8712F 128P Super I/O.ITE.IT8712F-A/DY/L;EE-A010264;14S4871200;TWN	125	35.4	70.4	
2	U49	(TF)IC.SMD SOP.8Pin Switching PWM Controller.IR.IRU3037CSPbF;EE-A020732;14S2303700;TWN	125	36.2	71.2	
3	U46	(TF)IC.SMD.LQFP 100P.PCI Ethernet CHIP.RELTEK.RTL8100BL-LF;EE-A050559;14S4810002;TWN	125	35.2	70.2	
4	U34	(TF)Dual N-Channel.SMD SO-8.2.5V MOSFET.APEC.AP9926GM;EE-A030055;1315992601;TWN	---	35.9	70.9	
5	RAM	Transcend DDR SO-DIMM TS32MSD64V3F5 / V58C2256804SCT6	100	41.3	76.3	
6	U42	(TF)IC.SMD.SO8.Step-Down DC/DC Controller.Anpec.APW7057KC-TRL;EE-A040426;14S2705700;TWN	100	38.1	73.1	

3. Tm (Measured operation temperature) must be less than Tc (Specified case temperature) +5 degree C
4. Any Tm value showed in red words which meaning the value is over the Tc+ 5 degree C of this device specification