

GENE-5315

Subcompact Board

Thermal Image Analysis Report

Report NO: 08E080008

Release Date: May 05, 2008

2008/05/07

Issue Stamp

Wenyuan Yang

Manager

Tina Wang

Test Engineer

Thermal Image Analysis

I . Model Name: GENE-5315 B1.0

II . Description: Subcompact Board

III . Date: May 05, 2008

IV . Measure Site: AAEON QE Dept.

V . Issued by : Tina Wang

VI.Equipment:

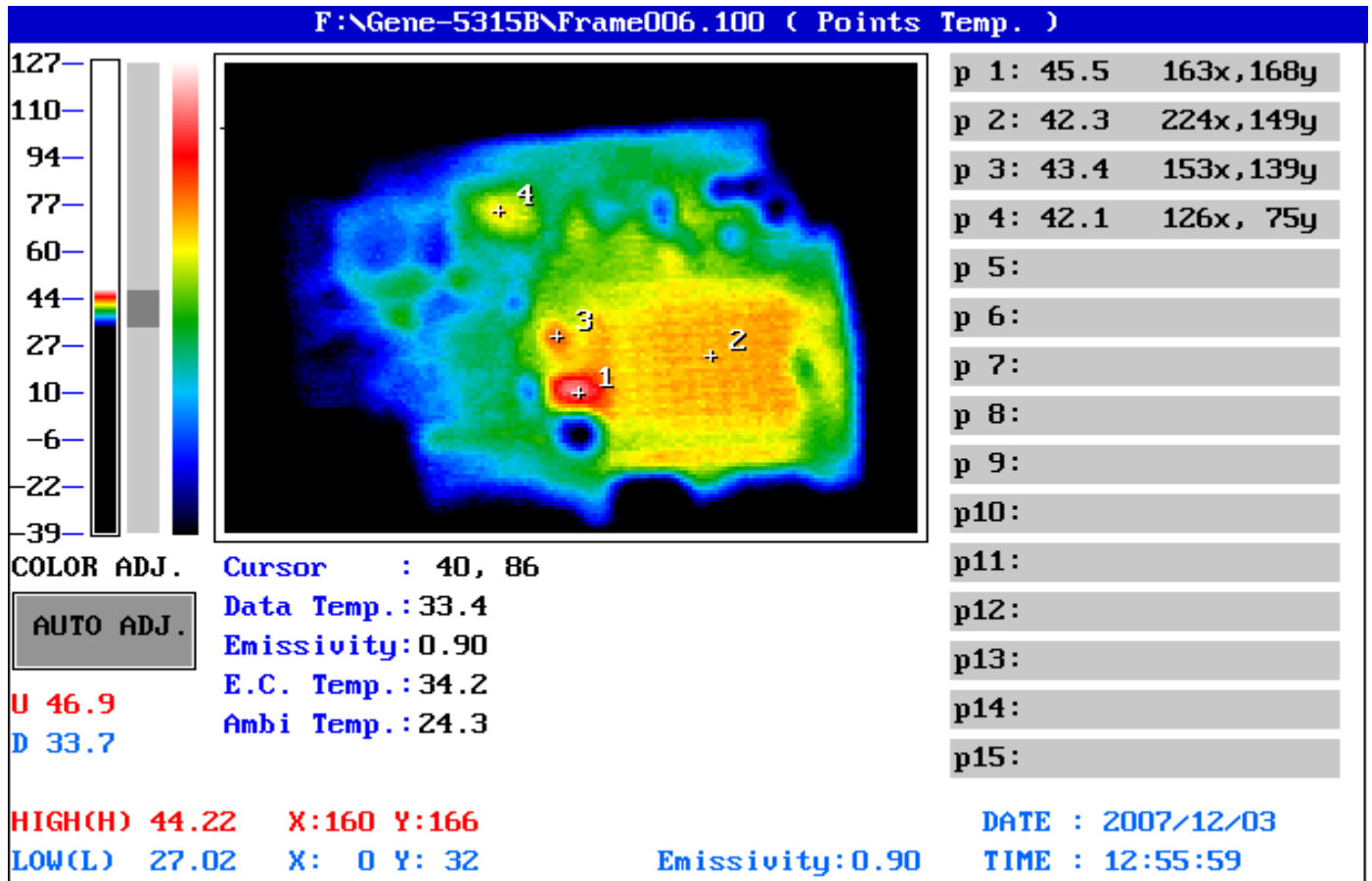
TVS-100 series by NIPPON AVIONICS CO., LTD.

VII. Simulation Environment:

- **Temperature: Component Side-1 : 24.3°C ,
Solder Side-2 : 24.4°C**
- **CPU : AMD LX 800 Processor (500MHz)**
- **RAM : Transcend DDR-333 SODIMM SDRAM 512MB (HY5DU12822CTP-043) x 1 pcs**
- **BIOS : GENE-5315B BIOS Rev .05 (11/12/2007)**
- **CF Card : N/A**
- **HDD: Seagate ST3160812A 160GB IDE HDD**
- **Application Software: Run Prime95 under Windows XP Professional V2002 Service Pack 2**
- **Take Picture Time: After Power on 2 hours.**

Temperature Profile Test:

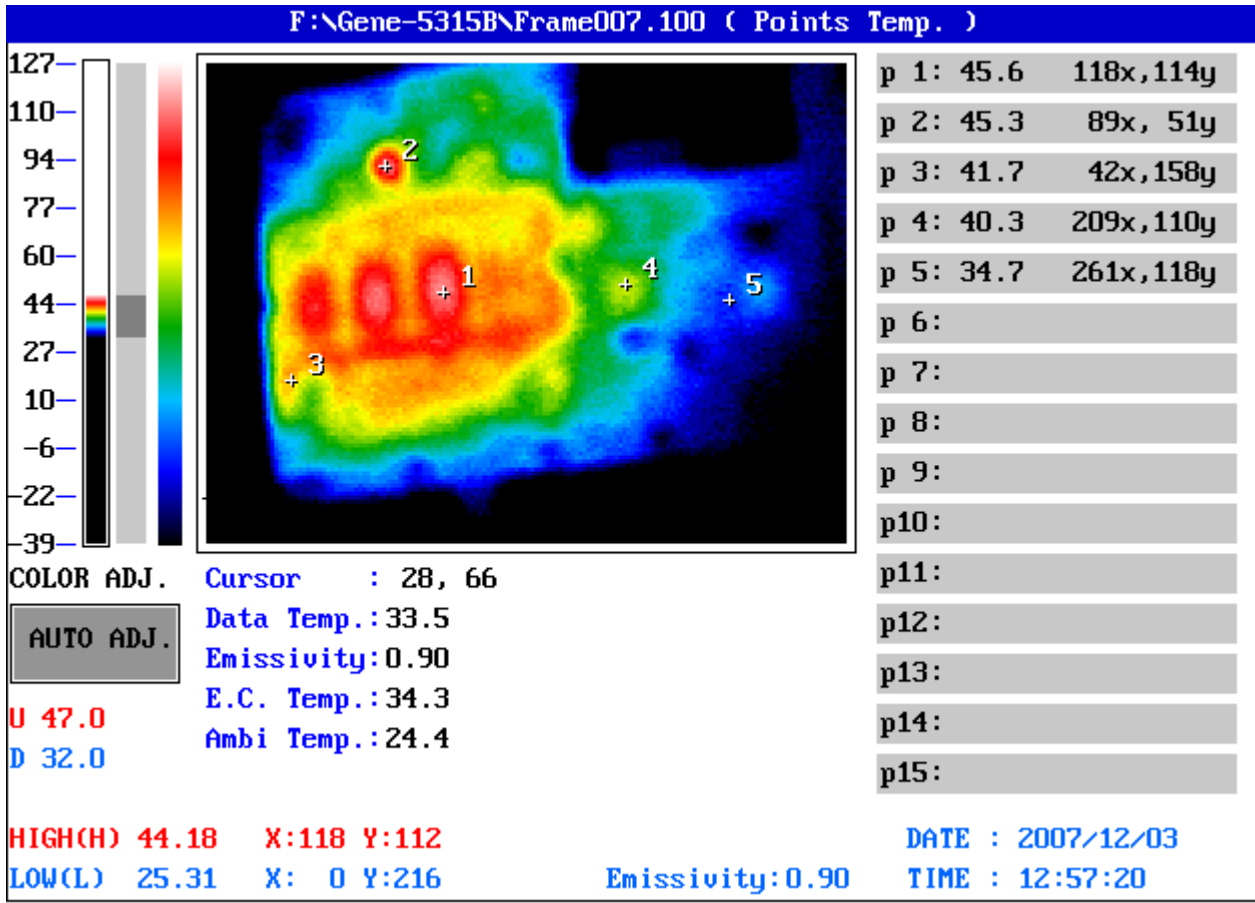
Component Side-1 :



Point	Position	Describe	Tc (°C)	Tm (24.3°C)	Tm (60°C)	Note
1	U13	(TF)IC.SMD.SSOP28.Clock Generator.ICS.MK1491-09FLN	100	45.5	81.2	
2	U12 (CPU)	(TF)AMD CPU.BGU481.LX-800.500MHz.1.25V. AMD.ALXD800EEXJ2VD C3;EE-A080020;14S4800004;TWN	85	42.3	78	
3	U7	(TF)IC.SMD SOP 8P.Clock Output Buffer.ICS.ICS9112M-16LF-T	100	43.4	79.1	
4	U1	(TF)IC.SMD.QFP128P Super I/O.ITE.IT8712F/KX-L	100	42.1	77.8	
5						
6						
7						
8						
9						
10						

1. Tm (Measured operation temperature) must be less than Tc (Specified case temperature) +5 degree C
 2. Any Tm value showed in red words which meaning the value is over the Tc+ 5 degree C of this device specification

Solder Side-2 :



Point	Position	Describe	Tc (°C)	Tm (24.4°C)	Tm (60°C)	Note
1	SODIMM SDRAM	Transcend DDR-333 SODIMM SDRAM 512MB (HY5DU12822CTP-043)	N/A	45.6	81.2	
2	U24	(TF)IC.SMD.2 Channell Audio Codec.Realtek.ALC203-LF	100	45.3	80.9	
3	U37	(TF)IC.SMD.TSSOP56.FlatLink Transmitter.TI.SN75LVDS83	100	41.7	77.3	
4	U33	(TF)IC.SMD.LQFP 100P PCI Ethernet Chip.RELTEK.RTL8139DL	100	40.3	75.9	
5	U10	(TF)IC.SMD.LQFP 100P PCI Ethernet Chip.RELTEK.RTL8139DL	100	34.7	70.3	

1. Tm (Measured operation temperature) must be less than Tc (Specified case temperature) +5 degree C
 2. Any Tm value showed in red words which meaning the value is over the Tc+ 5 degree C of this device specification