

# ETX-CX700M

VIA CX700M ETX Board

## Thermal Image Analysis Report

Report NO: 08E080040  
Release Date: 11/24/2008

2008/11/24

Issue Stamp

Wenyuan Yang

Manager

Danny Chen

Test Engineer

## Thermal Image Analysis

---

**I . Model Name: ETX-CX700M Rev A0.3**

**II . Description: VIA CX700M ETX Board**

**III . Date: 2008/11/24**

**IV. Measure Site: AAEON QE Dept.**

**V. Issued by : Danny Chen**

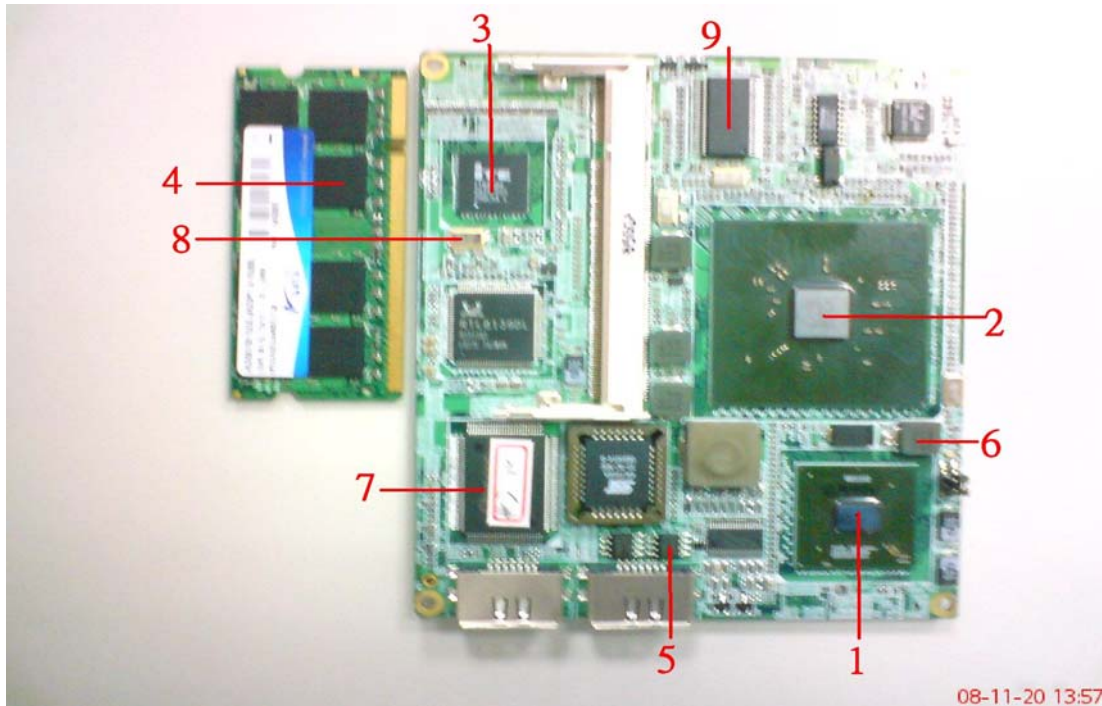
**VI. Equipment: PR1000(TH-046)**

**VII. Simulation Environment:**

- Temperature: Component Side-1 : 25.0°C, Component Side-2 : 25.0°C
- CPU :VIA Eden Processor 1600MHz
- RAM : A-DATA DDR2 667 SODIMM 1GB
- BIOS : ETX-CX700M BIOS Rev 0.74 (11/17/2008)
- CF Card : N/A
- HDD : Seagate ST340014A 40GB
- Application Software: Run Prime95 under Windows XP Professional V2002 Service Pack 3
- Take Picture Time: After Power on 2 hours.

## Temperature Profile Test:

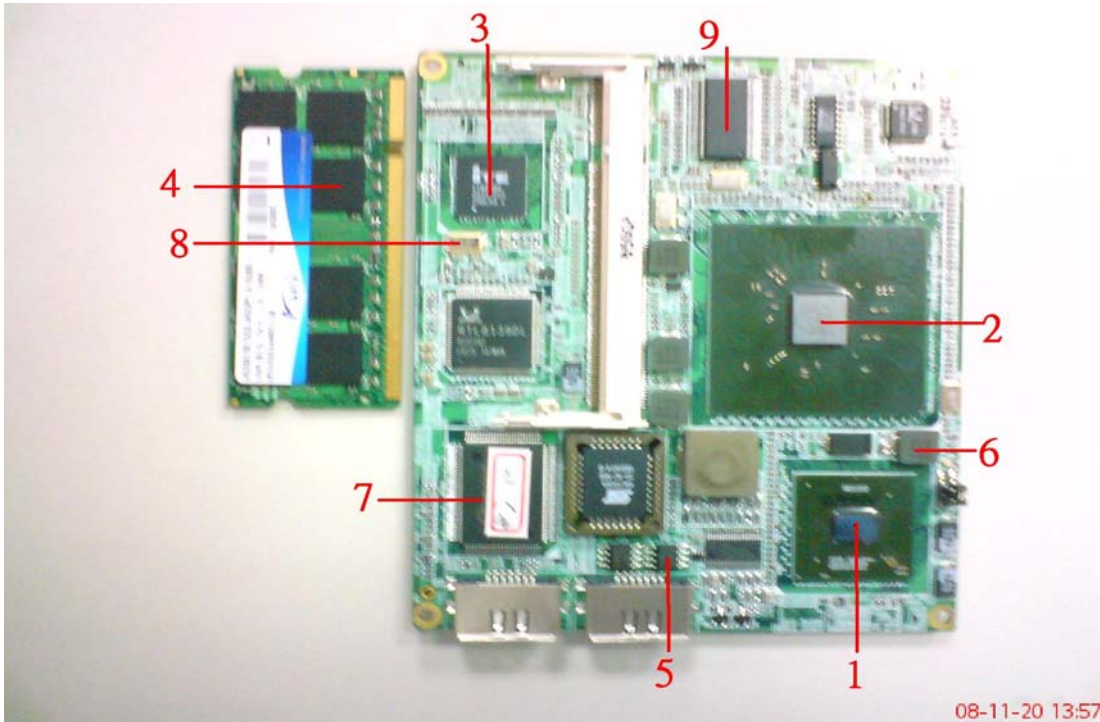
### Component Side-1:



Point	Position	Describe	Tc (°C)	Tm (25.0°C)	Tm (60°C)	Note
1	U1	(TF)SMD ASS'Y.ETX-CX700M.Rev.A0.3.VIA EDEN 1.6Ghz.Realtek 8139DL	-----	56.5	91.5	
2	U2	(TF)IC.FCBGA-958.Chipset.VIA.CX700M;EE-A061954;14S4700002;TWN	85	52.8	87.8	
3	U13	(TF)IC.SMD TFBGA.160P.PCI to ISA Bridge Chip.ITE.IT8888G-L;EE-A051091;14S4888801;TWN	100	54.7	89.7	
4	RAM	A-DATA DDR2 667 SODIMM 1GB (A-DATA AD29608A8A-3EG	-----	55	90	
5	U16	(TF)PWR.SMD SO8.N-Channel POWER MOSFET.FAIRCHILD.FDS6680AS_NL;EE-A070087;1315668012;TWN	125	52.3	87.3	

1. Tm (Measured operation temperature) must be less than Tc (Specified case temperature) +5 degree C

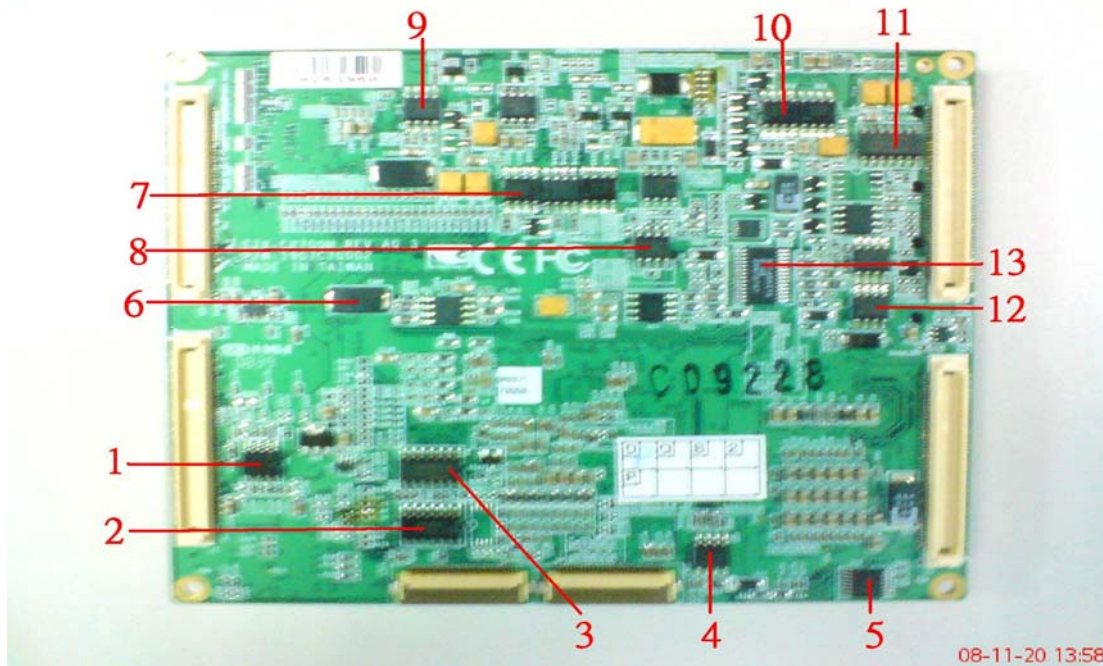
2. Any Tm value showed in red words which meaning the value is over the Tc+ 5 degree C of this device specification



Point	Position	Describe	Tc (°C)	Tm (25.0°C)	Tm (60°C)	Note
6	L14	(TF)COIL.1.5uH.Irms=9A.Isat=18A.20%.SMD(7.3x6.8x3.0).2pin.RD C=15m Ohm.GOTREND.GSTC063P-1R5MN;EE-A061612;121110156A;TWN	125	55.3	90.3	
7	U15	(TF)IC.SMD.PQFP 128Pin.LPC Super I/O.Winbond.W83627HG-AW A version;EE-A051465;14S4362704;TWN	70	54.5	89.5	
8	X5	(TF)XTAL SMD.25MHz.6*3.5 mm 20PPM.2P.仕 野.XSX250-S632-20;EE-A050534;1231325058;TWN	----	55.9	90.9	
9	U8	(TF)IC.SMD.SSOP 48Pin.Clock Generator.ICS.ICS952906BFLF-T;EE-A061971;14S3090600;TWN	100	59.4	94.4	

3. Tm (Measured operation temperature) must be less than Tc (Specified case temperature) +5 degree C  
 4. Any Tm value showed in red words which meaning the value is over the Tc+ 5 degree C of this device specification

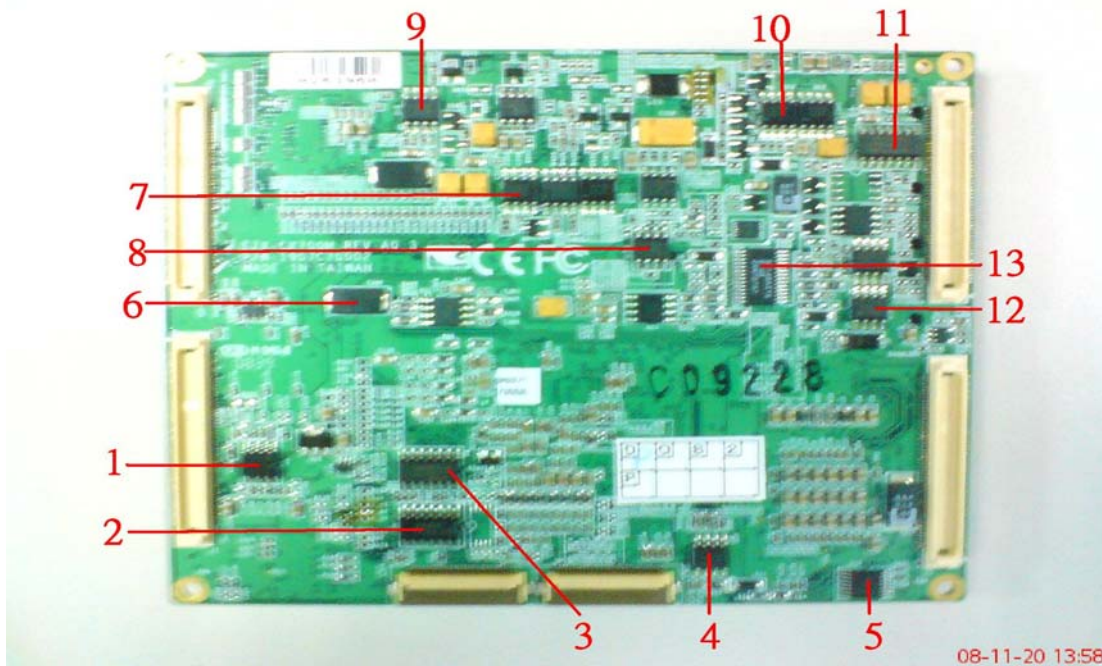
Component Side-2



Point	Position	Describe	Tc (°C)	Tm (25.0)	Tm (60°C)	Note
1	U6	(TF)IC.SO8 SMD.Voltage Detecting.System Resetting IC.MITSUBISHI.M51957A;EE-A060753;14S4195710;TWN	85	47.9	82.9	
2	U5	(TF)IC.SMD.SO 14P HEX INVERTERS.TI.SN74LV04A;EE-A020420;14S5A00400;TWN	----	50.3	85.3	
3	U4	(TF)IC.SMD SO 14Pin.PHILIPS.N74F04D;EE-A990055;14S5500400;	100	55.4	90.4	
4	Q22	(TF)Dual N-Channel.SMD SO-8.2.5V MOSFET.APEC.AP9926GM;EE-A030055;1315992601;TWN	125	55.7	90.7	
5	U10	(TF)IC.SMD TSSOP.16Pin.4bit 1-to-2 Multiplexer.TI.SN74CBT3257PW;EE-A050596;14S5A25701;TWN	115	55	90	
6	C366	(TF)SP CAP.[8.2μF~470μF].[2V~ 8V].20%.SMD.Panasonic.EEF/ECG 系列(耐溫 260°C);EE-A060158;118*****8*;TWN	105	51	86	

5. Tm (Measured operation temperature) must be less than Tc (Specified case temperature) +5 degree C

6. Any Tm value showed in red words which meaning the value is over the Tc+ 5 degree C of this device specification



Point	Position	Describe	Tc (°C)	Tm (25.0)	Tm (60°C)	Note
7	Q19	(TF)PWR.SMD.SO-8.N-Channel.30V.10A.13.5mΩ.MOSFET.APEC.AP4410GM;EE-A030505;1315441012;TWN	125	57.6	92.6	
8	U36	(TF)IC.SMD.SOP 8.2K Serial EEPROM.Microchip.24LCS52ISN;EE-A080758;14S6305200;TWN	125	54.3	89.3	
9	O15	(TF)IC.SMD SO8.3A Linear Regulator.Anpec.APL5331KC-TRL;EE-A041712;14S2533100;TWN	125	51.1	86.5	
10	Q10	(TF)PWR.SMD.SO-8P.P-Channel MOSFET.APEC.AP6679GM;EE-A071268;1315667910;TWN	125	54.6	89.6	
11	U31	(TF)IC.SMD SO.14Pin.PHILIPS.74LVC07AD-T;EE-A000431;14S5A00700;TWN	155	40.3	75.3	
12	U18	(TF)PWR.SMD SO8.N-Channel MOSFET 30V 15A.FAIRCHILD.FDS8896;EE-A070070;1315889611;TWN	125	54	89	
13	U33	(TF)IC.SMD MLPD-10.PWM BUCK CONTROLLER.IR.IR3624MTRPBF;EE-A061341;14S2362400;TWN	125	57.8	92.8	

7. Tm (Measured operation temperature) must be less than Tc (Specified case temperature) +5 degree C

8. Any Tm value showed in red words which meaning the value is over the Tc+ 5 degree C of this device specification