

ETX-701

AMD LX800 + CS5536
ETX Board

Thermal Image Analysis Report

Report NO : 08E080020

Release Date: Aug. 6 , 2008

2008/08/06

Issue Stamp

Wenyuan Yang

Manager

Jerry Tsai

Test Engineer

Thermal Image Analysis

I . Model Name: ETX-701 A0.1

**II . Description: AMD LX800 + CS5536
ETX Board**

III . Date: Aug.06, 2008

IV. Measure Site: AAEON QE Dept.

V. Issued by : Jerry Tsai

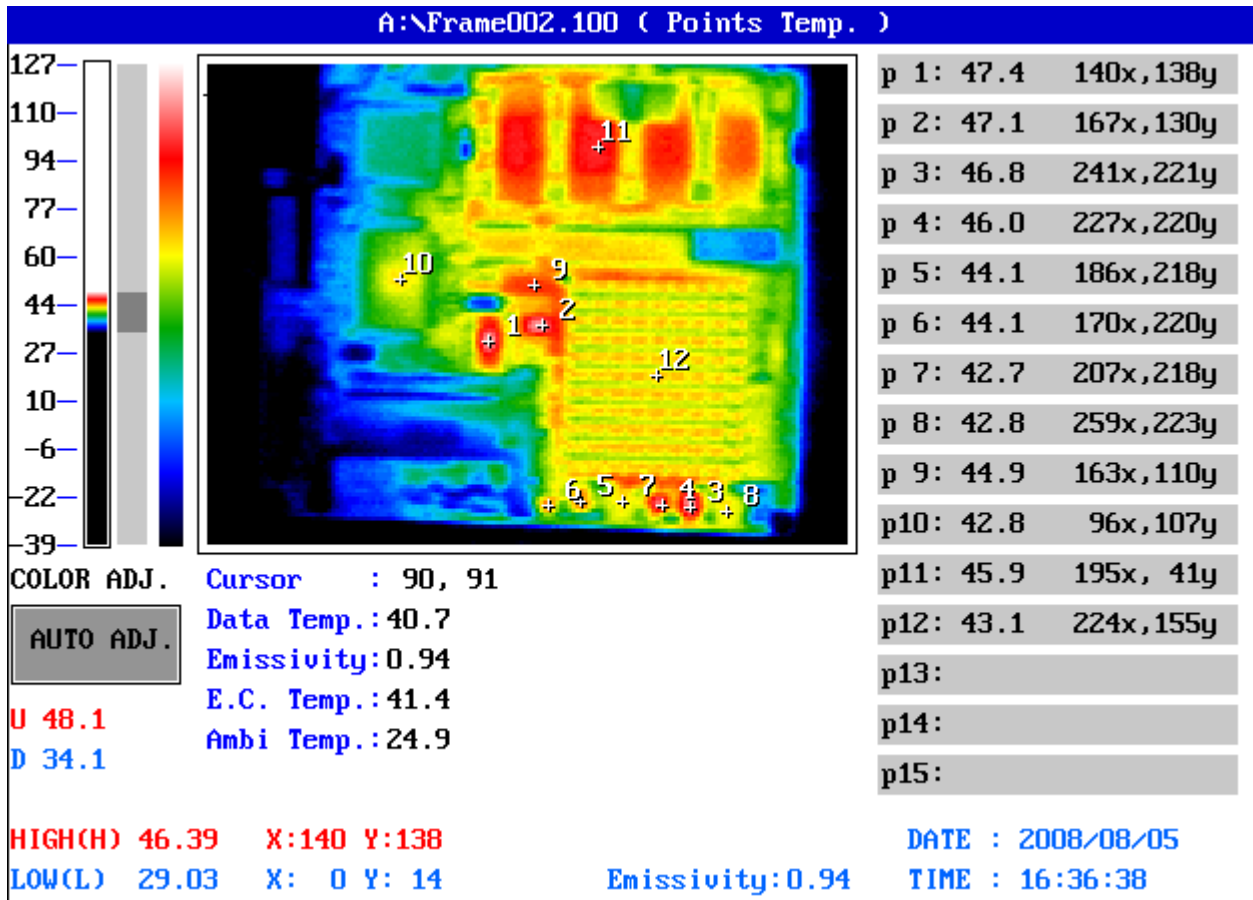
VI. Equipment:
TVS-100 series by NIPPON AVIONICS CO., LTD.

VII. Simulation Environment:

- Temperature: Component Side-1 : 24.9℃
- CPU : Geode LX 500MHz
- RAM : Kingston KVR333X64SC25 DDR333 SODIMM 512MB
- BIOS : ETX-701 BIOS Rev 0.3(07/22/2008)
- CF Card : N/A
- HDD : SEAGATE ST3160815A 160GB 40GB 3.5" IDE HDD
- Application Software: Run Prime95 under Windows XP Professional V2002 Service Pack 2
- Take Picture Time: After Power on 2 hours.

Temperature Profile Test:

Component Side-1:



Point	Position	Describe	Tc (°C)	Tm (24.9 °C)	Tm (60°C)	Note
1	U22	IC.SMD.SSOP-28Pin.Clock Generator.ICS.MK1491-09FILN;EE-A080084;14S3149104;TWN	100	47.4	82.5	
2	U17	IC.SMD.SOP 8.Clock Buffer.ICS.ICS9112M-27LF-T;EE-A080597;14S4911227;TWN	115	47.1	82.2	
3	Q3	Dual N-Channel.SO-8.SMD.Vds=30V.Ids=6A.Rds=21/27mohm.Vgs=10 /4.5V.ANPEC.APM7313KC-TRL;EE-A060563;1315731310;TWN	125	46.8	81.9	
4	U26	IC.SMD MLPD-10.PWM BUCK CONTROLLER.IR.IR3624MTRPBF;EE-A061341;14S2362400;TW N	125	46.0	81.1	

5	Q5	Dual N-Channel.SO-8.SMD.Vds=30V.Ids=6A.Rds=21/27mohm.Vgs=10 /4.5V.ANPEC.APM7313KC-TRL;EE-A060563;1315731310;TWN	125	44.1	79.2	
6	U29	IC.SMD MLPD-10.PWM BUCK CONTROLLER.IR.IR3624MTRPBF;EE-A061341;14S2362400;TW N	125	44.1	79.2	
7	L4	COIL.1.5uH.Irms=9A.Isat=18A.20%.SMD(7.3x6.8x3.0).2pin.RDC= 15m Ohm.GOTREND.GSTC063P-1R5MN;EE-A061612;121110156A;T WN	125	42.7	77.8	
8	L2	COIL.1.5uH.Irms=9A.Isat=18A.20%.SMD(7.3x6.8x3.0).2pin.RDC= 15m Ohm.GOTREND.GSTC063P-1R5MN;EE-A061612;121110156A;T WN	125	42.8	77.9	
9	U39	IC.SMD.SOP 16Pin PCI Arbiter.ITE.IT8208M;EE-A031200;14S9820800;TWN	125	44.9	80	
10	U20	IC.SMD.PQFP 128Pin.LPC Super I/O.Winbond.W83627HG-AW A version;EE-A051465;14S4362704;TWN	150	42.8	77.9	
11	DDR	Kingston KVR333X64SC25 DDR333 SODIMM 512MB (NANYA NT5DS64M8BS-5T)	100	45.9	81	
12	U12	AMD CPU.BGU481.LX-800.500MHz.1.25V.AMD.ALXD800EEXJ2VD C3;EE-A080020;14S4800004;TWN	85	43.1	78.2	

1. Tm (Measured operation temperature) must be less than Tc (Specified case temperature) +5 degree C
2. Any Tm value showed in **red words** which meaning the value is over the Tc+ 5 degree C of this device specification