

# EPIC-9456

Intel 945GM + ICH7-M  
EPIC Board

## Thermal Image Analysis Report

Report NO : 08E080006

Release Date: Mar. 27 , 2008

2008/03/27

Issue Stamp

Wenyuan Yang

Manager

Jerry Tsai

Test Engineer

# Thermal Image Analysis

---

**I . Model Name: EPIC-9456 A0.2**

**II . Description: Intel 945GM + ICH7-M  
EPIC Board**

**III . Date: Mar.27, 2008**

**IV. Measure Site: AAEON QE Dept.**

**V. Issued by : Jerry Tsai**

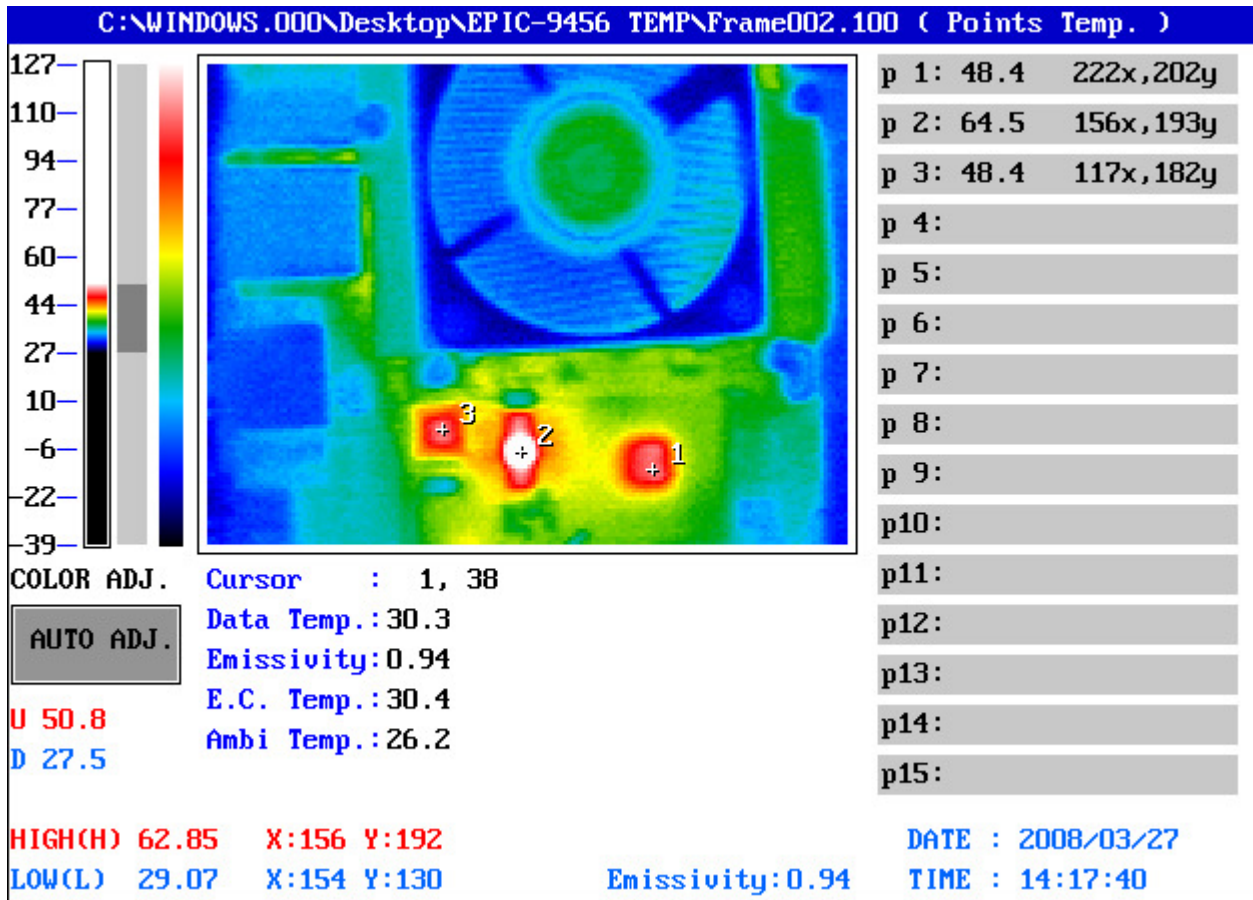
**VI. Equipment:  
TVS-100 series by NIPPON AVIONICS CO., LTD.**

**VII. Simulation Environment:**

- Temperature: Component Side-1 : 26.2°C , Component Side-2 : 27.0°C
- CPU : Intel CPU Core 2 Duo 2.16 GHz 667MHz FSB Merom T7400 LF80537GF0484M
- RAM : Kingston DDR2-667 KVR667D2S5/2G 2GB (7KEI2 D9HNL)
- BIOS : EPIC-9456 Rev 0.7 (01/30/2008)
- CF Card : N/A
- HDD : Western Digital WD800JB-00JJC0 80GB 3.5" IDE HDD
- Application Software: Run Media Player to Play Film
- Take Picture Time: After Power on 2 hours.

## Temperature Profile Test:

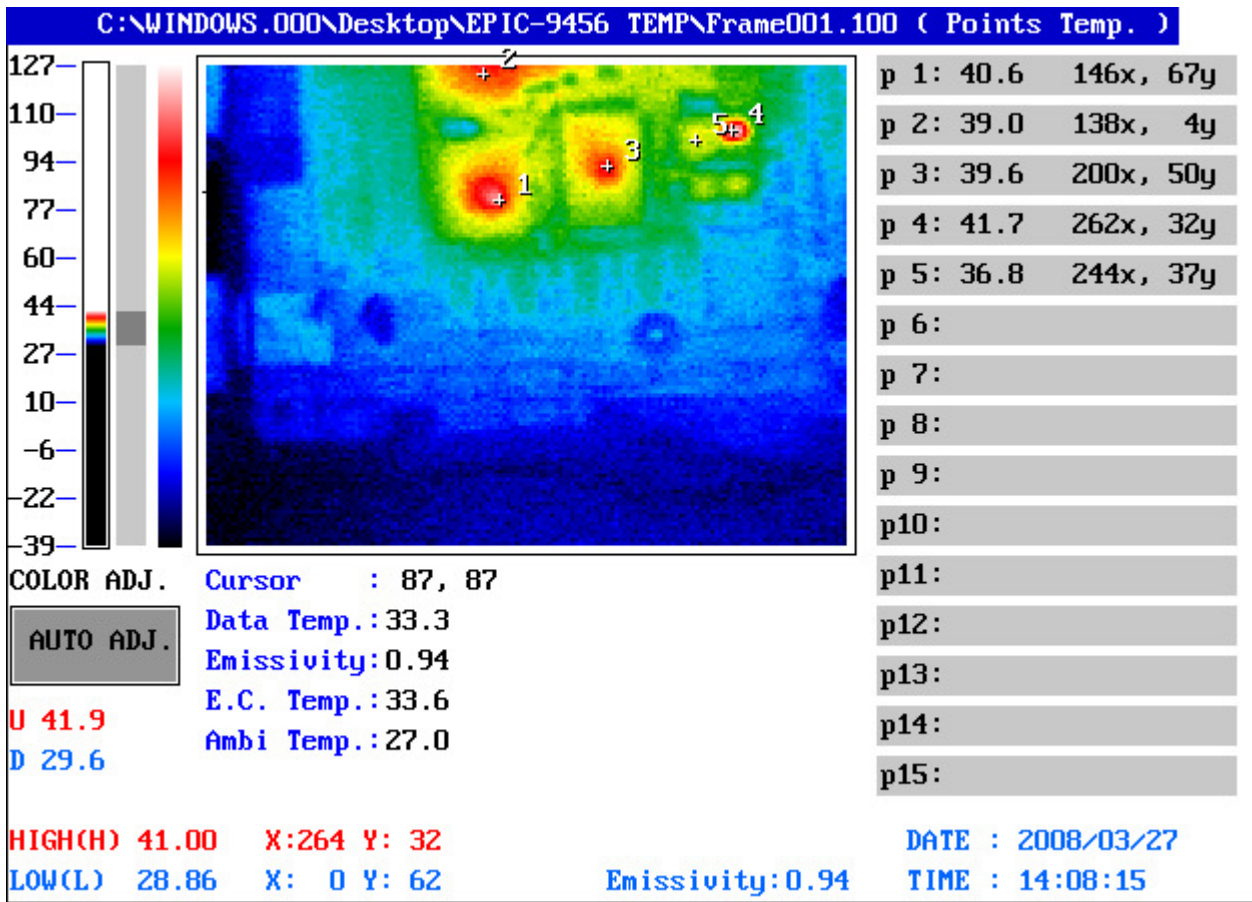
### Component Side-1:



Point	Position	Describe	Tc (°C)	Tm (26.2 °C)	Tm (60°C)	Note
1	U3	(TF)IC.SMD.Chipset ICH7M.Intel.NH82801GBM SL8YB;EE-A060320;14S428010D;TWN	99	48.4	82.2	
2	U6	(TF)IC.SMD.TSSOP 56P.CLOCK GENERATOR.ICS.ICS954226AGLF;EE-A060018;14S3422600;TWN	100	64.5	98.3	
3	U44	(TF)IC.SMD.LQFP 64Pin.LVDS Transmitter.CHRONTEL.CH7308B-TF;EE-A070801;14S4730802;T WN	115	48.4	82.2	

1.Tm (Measured operation temperature) must be less than Tc (Specified case temperature) +5 degree C  
 2.Any Tm value showed in red words which meaning the value is over the Tc+ 5 degree C of this device specification

## Component Side-2:



Point	Position	Describe	Tc (°C)	Tm (27°C)	Tm (60°C)	Note
1	U25	(TF)IC.SMD.BGA 196P.GigaBit Ethernet Chipset.Intel.PC82573L;EE-A061536;14S4825730;TWN	100	40.6	73.6	
2	U26	(TF)IC.SMD.BGA 196P.GigaBit Ethernet Chipset.Intel.PC82573L;EE-A061536;14S4825730;TWN	100	39.0	72	
3	U8	(TF)IC.SMD.QFP128P Super I/O.ITE.IT8712F/KX-L;EE-A061481;14S4871204;TWN	100	39.6	72.6	
4	U30	(TF)IC.SMD.S08.Step-Down DC/DC Controller.ANPEC.APW7120KE-TRL;EE-A061159;14S2712000;TWN	100	41.7	74.7	
5	L52	(TF)COIL.4.7uH./-20%.SMD.7.3*6.8*3.0mm.DCR=37mohm.Irms=5 .5Amp.GOTREND.GSTC063P-4R7MN;EE-A061543;121110476G;TWN	125	36.8	69.8	

1. Tm (Measured operation temperature) must be less than Tc (Specified case temperature) +5 degree C  
 2. Any Tm value showed in red words which meaning the value is over the Tc+ 5 degree C of this device specification