

TESTING / INSPECTION REPORT

DATE : May 25, 2004
REPORT NO : ST-040525-1

COMPANY : AAEON Technology Inc.
5F, No.135, Lane 235, Pao Chiao Rd.
Hsin-Tien City, Taipei, Taiwan, R. O. C.
TEL : 886-2-8919-1234
FAX : 886-2-8919-1049

SPECIMEN : CF connector

TEST / INSPECTION ITEMS : Shock Test (See Page 2)

REMARKS :

- The results only apply to the device under test.
- This report is 9 pages, and no part of it may be abstracted or reproduced.
- Attached pages are controlling pulse of shock test.

Test Engineer : <i>Dennis</i>	
Approved by : <i>David Lee 2004.5.26</i>	Laboratory Head : <i>Dennis Ting</i>



TESTING / INSPECTION REPORT

TESTING EQUIPMENT :

- | | |
|-------------------------|------------------------------------|
| 1. Shock Testing System | : (KD-DP-1200-60, S/N:KDS11054983) |
| 2. Controller | : (KD-1200-03C, S/N:KD674) |
| 3. Accelerometer | : (B&K 4398, S/N:2209044) |

TEST ENVIRONMENT :

- | | |
|-------------|--------------|
| Temperature | : 24± 2°C |
| Humidity | : 70± 20% RH |

SPECIMEN :

- | | |
|----------|------------|
| Model | : AEC-6810 |
| Quantity | : 1 piece |

SHOCK TEST SPECIFICATION :

- | | |
|-----------------|----------------------|
| (1) Wave Form | : Half sine wave |
| Acceleration | : 100 g |
| Duration Time | : 6 ms |
| No. of Shock | : Each axis 3 times |
| Shock Direction | : ± X, ± Y, ± Z axis |

TEST RESULT :

- | | |
|------------------|-------------|
| Appearance check | : No damage |
| Function check | : Normal |

TESTING / INSPECTION REPORT

Testing photos

AXIS \pm X



AXIS \pm Y



AXIS \pm Z



Axis X

DP-1288

180g 6ms

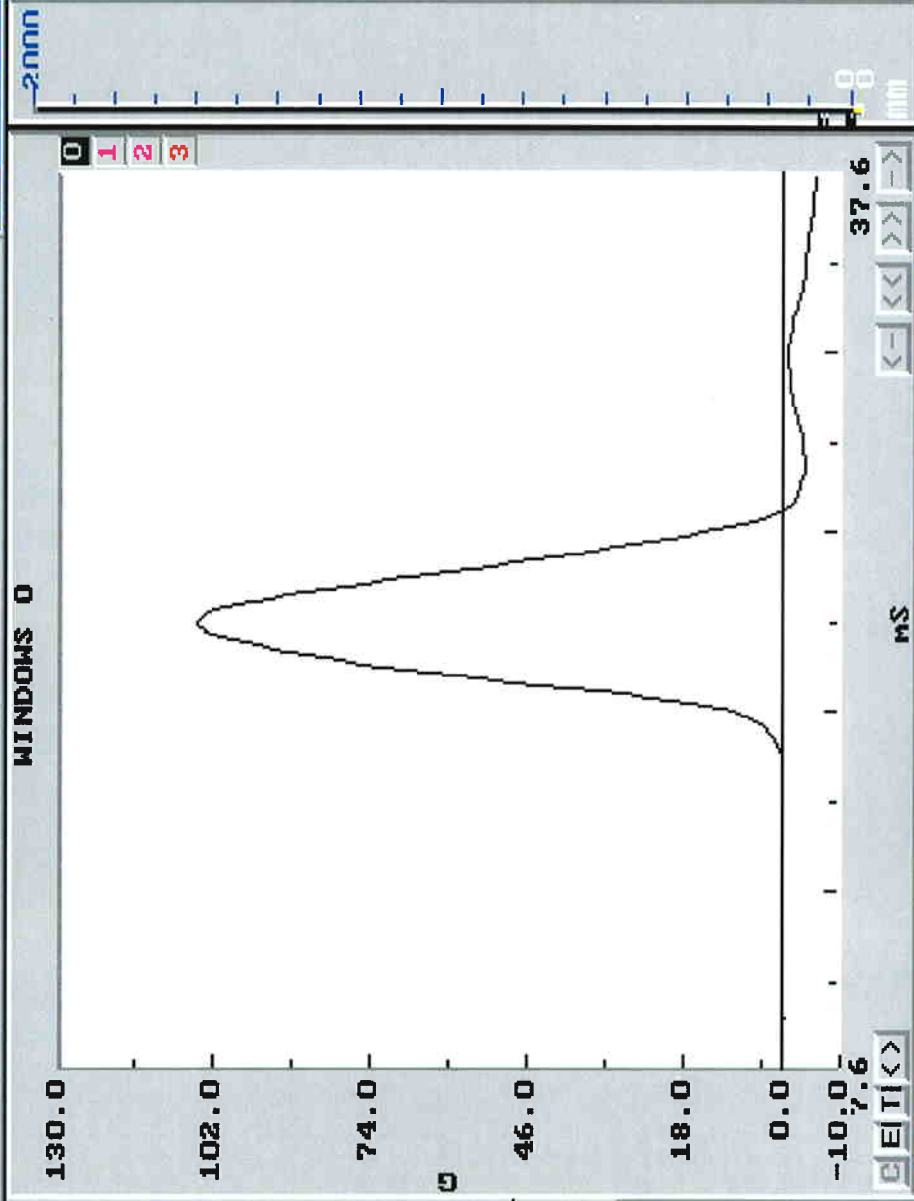
DURATION TIME: ms
6.20

SHOCK LEVEL: G
104.83

控制模式: 高度
+348 mm
+3
+185.26
+3
LOCK
RELEASE

待命正常狀態

- F1: 輔助說明
- F2: 開始
- F3: 停止
- F4: 暫停
- F5: 平台上升
- F6: 波形存檔
- F7: 畫面印表
- F8: 特性測試
- F9: 更換試塊
- F10: 平台下降



測試完成!

Channel	0 - ON	1 - OFF	2 - OFF	3 - OFF
Title	CONTROL			
Max Acc	104.83			
Min Acc	-3.96			
Dur. T	6.20			
Delta U	3.86			
Filter	600			

測試參數檔: 04052403.PRA
報告輸出檔: 04052800.REP

Axis -X

DP-1200

100g 6ms

DURATION TIME: ms

6.20

SHOCK LEVEL: G

104.42

控制模式: 高度

+340 mm

+105.13

+3

+3

LOCK

RELEASE

待命正常狀態

F1:輔助說明

F2:開始

F3:停止

F4:暫停

F5:平台上升

F6:波形存檔

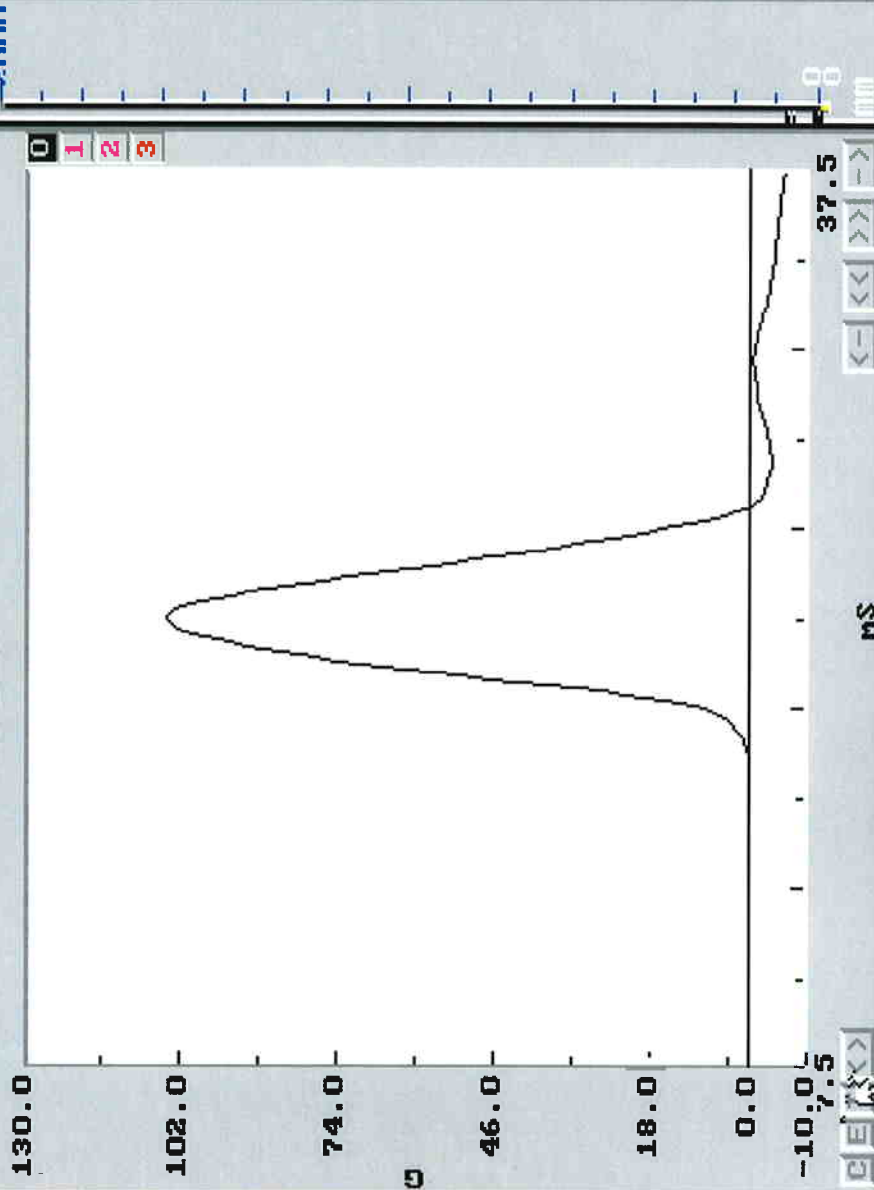
F7:畫面印表

F8:特性測試

F9:更換試塊

F10:平台下降

WINDOWS 0



測試完成!

Bchannel	0 - ON	1 - OFF	2 - OFF	3 - OFF
Title	CONTROL			
Max Acc	104.42			
Min Acc	-3.81			
Dur. T	6.20			
Delta U	3.85			
Filter	600			

測試參數檔: 04052403.PRA
報告輸出檔: 04052000.REP

Axis Y

DP-1288

100g 6ms

DURATION TIME: ms

6.10

SHOCK LEVEL: G

105.73

控制模式: 高度

+340 mm

+3

LOCK

RELEASE

待命正常狀態

F1:輔助說明

F2:開始

F3:停止

F4:暫停

F5:平台上升

F6:波形存檔

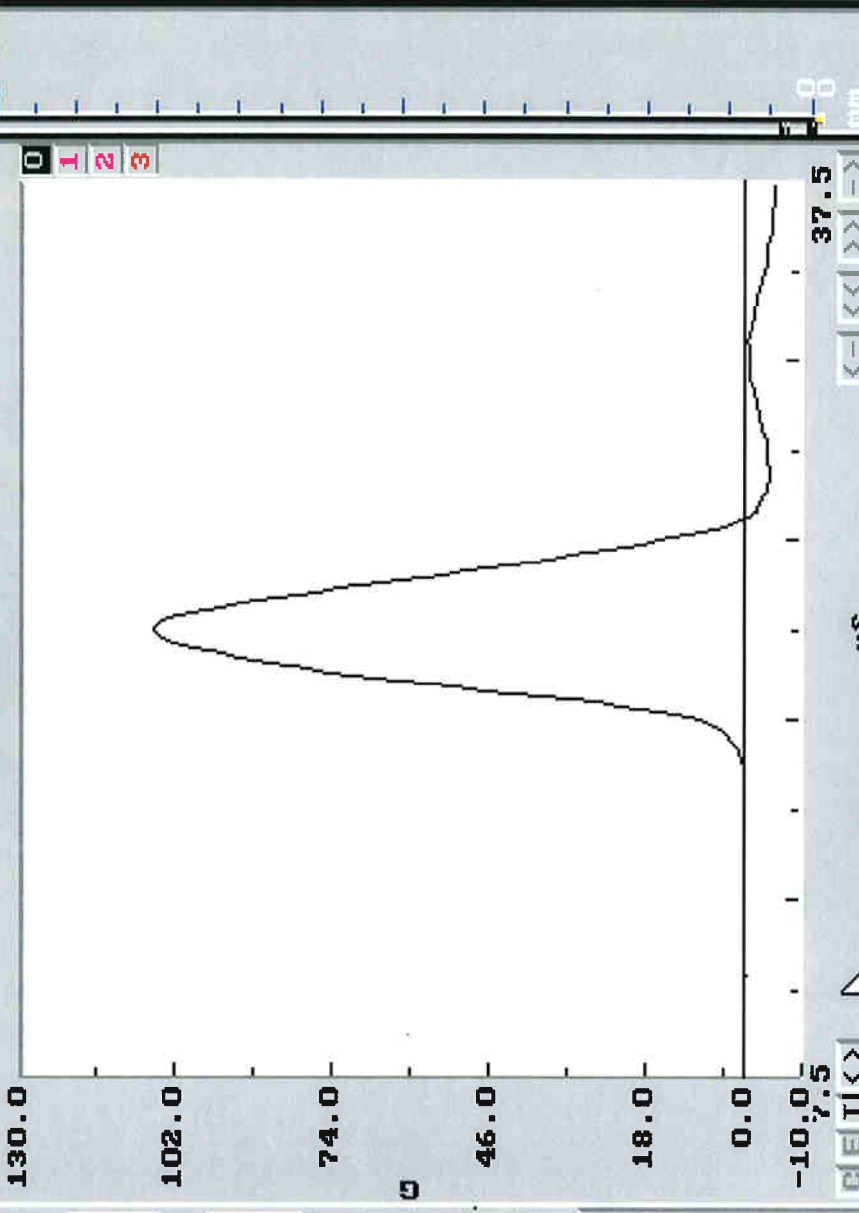
F7:畫面印表

F8:特性測試

F9:更換試塊

F10:平台下降

WINDOWS 0



測試完成!

Bchannel	0	ON	1	OFF	2	OFF	3	OFF
Title	CONTROL							
Max Acc	105.73							
Min Acc	-4.31							
Dur. T	6.10							
Delta V	3.86							
Filter	600							

測試參數檔:

04052403.PRA

報告輸出檔:

04052000.REP

Axis - Y

KDP-1200

100g 6ms

DURATION TIME: ms

6.20

SHOCK LEVEL: G

105.83

控制模式: 高度

+340 mm

+105.61

+3

LOCK

RELEASE

待命正常狀態

F1:輔助說明

F2:開始

F3:停止

F4:暫停

F5:平台上升

F6:波形存檔

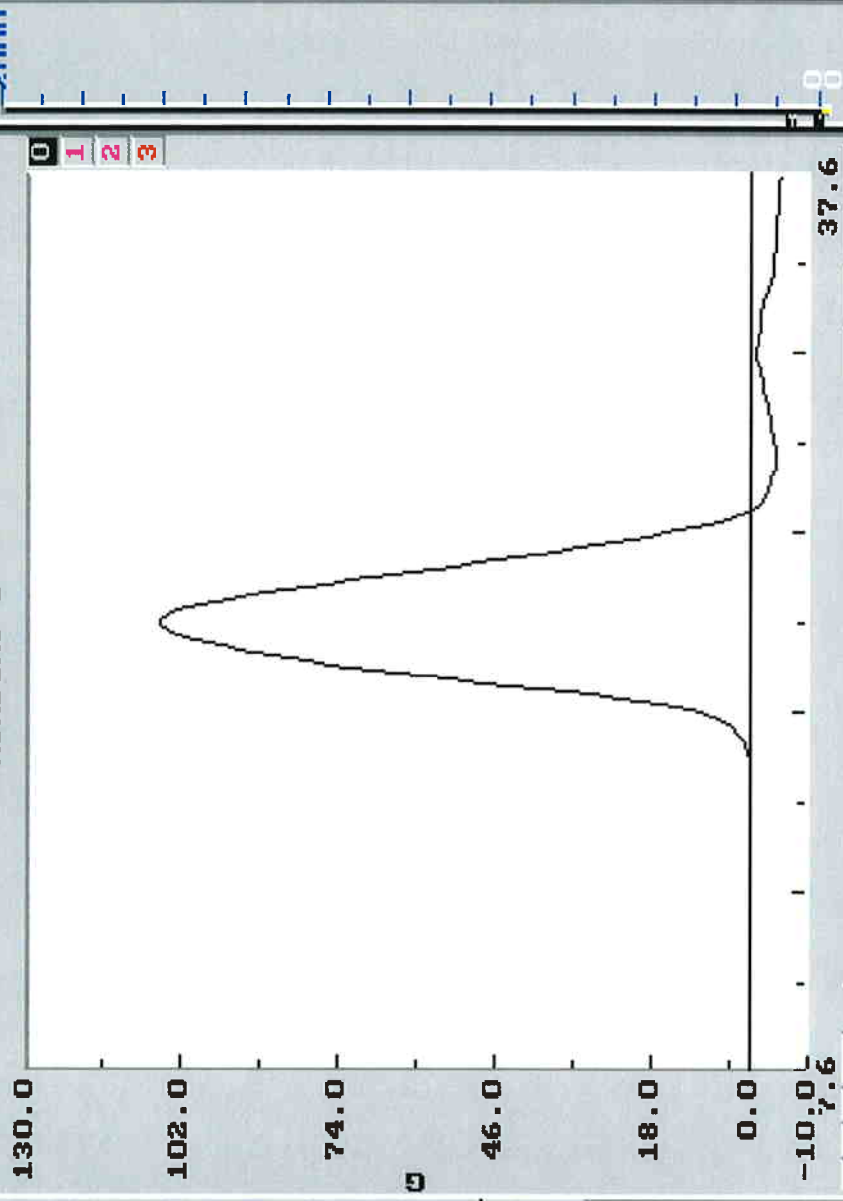
F7:畫面印表

F8:特性測試

F9:更換試塊

F10:平台下降

WINDOWS 0



EXIT

Navigation arrows: <-, <<, >>, >-

測試完成!

測試參數存檔:

Bhannel	0 - ON	1 - OFF	2 - OFF	3 - OFF
Title	CONTROL			
Max Acc	105.83			
Min Acc	-4.31			
Dur. T	6.20			
Delta U	3.89			
Filter	600			

04052403.PRA

報告輸出檔:

04052000.REP

Axis Z

DP-1200

100g 6ms

DURATION TIME: ms

6.10

SHOCK LEVEL: G

106.38

控制模式: 高度

+345 mm

+106.08

+3

+3

LOCK

RELEASE

待命正常狀態

F1:輔助說明

F2:開始

F3:停止

F4:暫停

F5:平台上升

F6:波形存檔

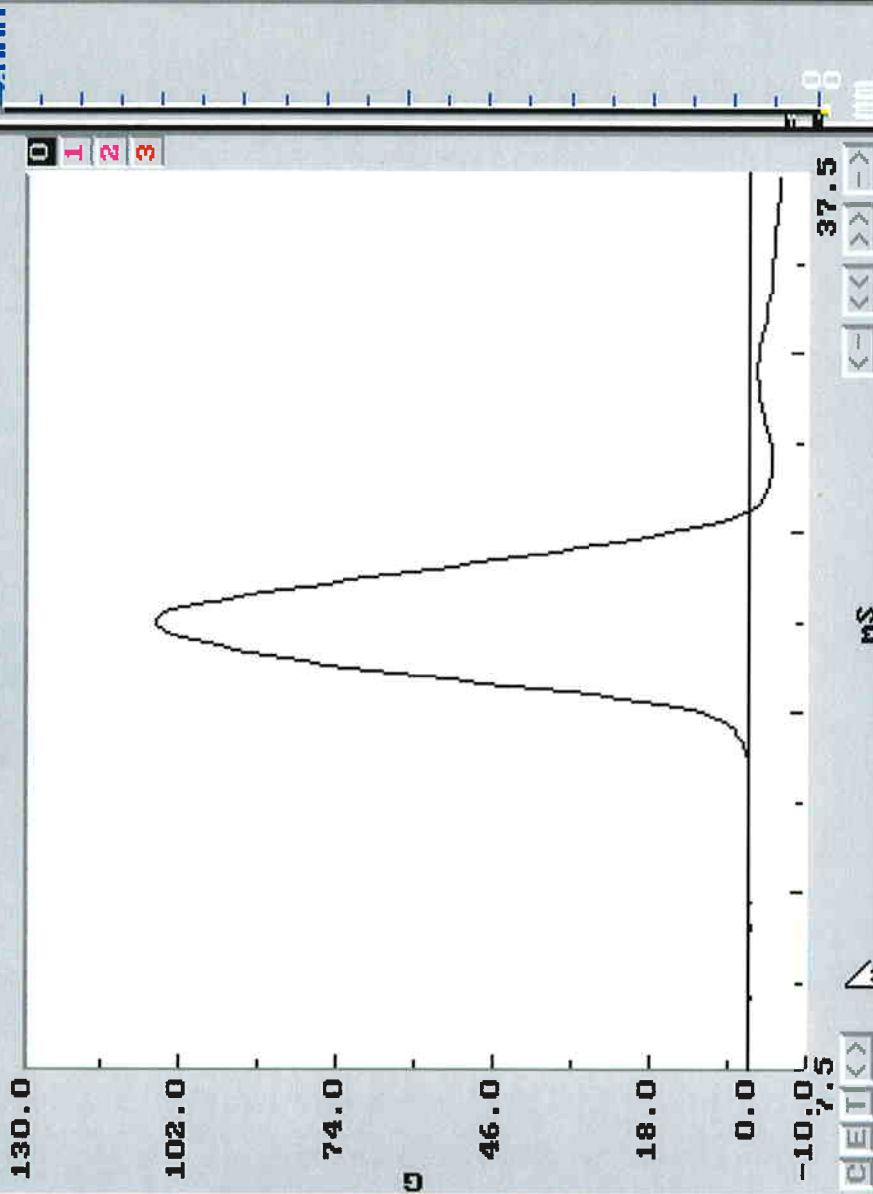
F7:畫面印表

F8:特性測試

F9:更換試塊

F10:平台下降

WINDOWS 0



測試完成!

測試參數檔:

Channel	0	ON	1	OFF	2	OFF	3	OFF
Title	CONTROL							
Max Acc	106.38							
Min Acc	-4.06							
Dur. T	6.10							
Delta U	3.88							
Filter	600							
	G	G	ms	m/s	Hz			

04052403.PRA

報告輸出檔:

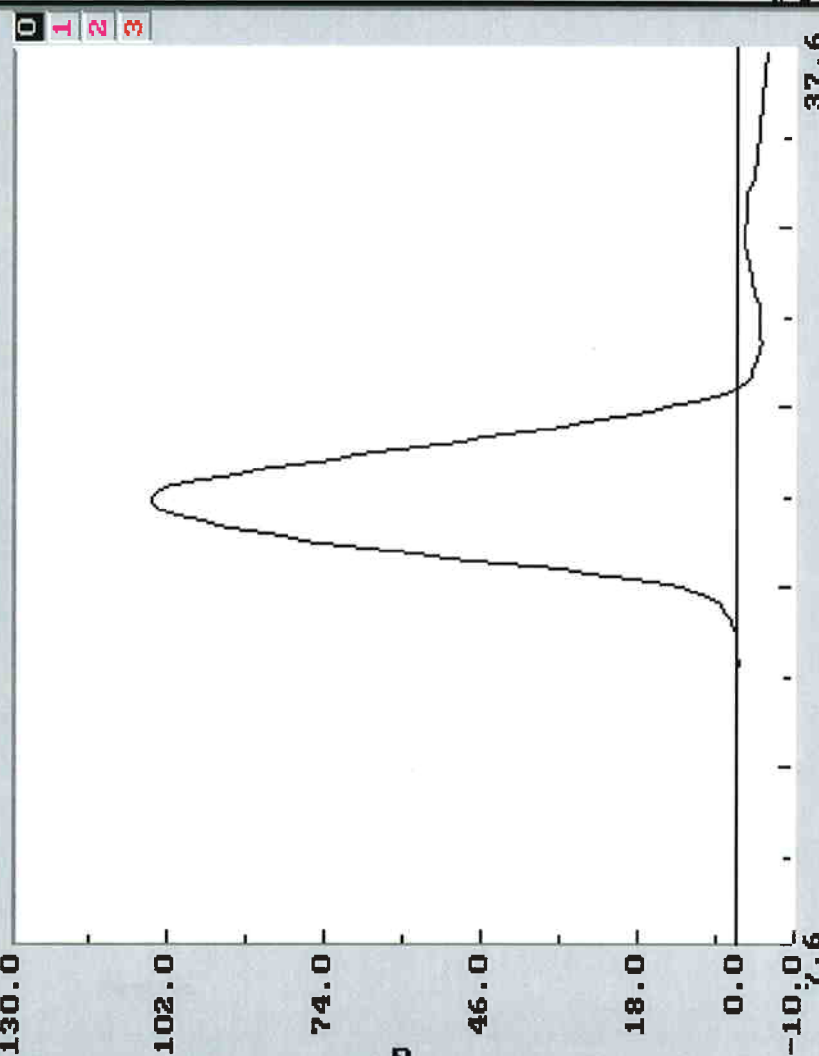
04052000.REP

Axis -2
KD DP-1200

WINDOWS 0

0 1 2 3

130.0
102.0
74.0
46.0
18.0
0.0
-10.0



7.6 37.6
ms
mm

100g 6ms

DURATION TIME: ms

6.10

SHOCK LEVEL: G

105.08

控制模式: 高度

+340 mm

+3

LOCK

RELEASE

待命正常狀態

F1:輔助說明

F2:開始

F3:停止

F4:暫停

F5:平台上升

F6:波形存檔

F7:畫面印表

F8:特性測試

F9:更換試塊

F10:平台下降

測試完成!

0 - ON 1 - OFF 2 - OFF 3 - OFF

Channel Title CONTROL

Max Acc: 105.08

Min Acc: -4.11

Dur. T: 6.10

Delta V: 3.85

Filter: 600

測試參數檔:

04052403.PRA

報告輸出檔:

04052000.REP