



## Sealed Air Taiwan Ltd.

### Taiwan Packaging Laboratory

No 20 Lane 238 Tun-Hwa N. Road, Taipei, Taiwan. Tel:(886)02-2713-5321 Fax:(886)02-2713-5334

International Safe Transit Association  
Certified Packaging Laboratory



ID Number: ST-2304

Mar 2, 2000

Prepared for: ASTECH TECHNOLOGY CO., LTD.  
Product: AMB-2003  
Carton Information: Double Wall AB-flute  
390\*360\*220mm Inside Dimensions  
Current Packaging: Instapak Gflex  
Test Method: International Safe Transit Association (ISTA) Procedure 1A-Pre-shipment test for packaged products weighing under 100 pounds.  
Test Equipment: Lansmont Precision Drop Tester  
Package Weight: 8.0kgs  
Drop Height: 36"  
Drop Description: 10 drops  
Manufacturers joint lower corner, three radiating edges, and six faces.

After testing, the outer container still afforded reasonable protection to its contents. There was no apparent physical damage to the unit. Functional testing, however, was not performed.

CONCLUSION: Provided that this unit is found to be in good working order, this package is suitable for common parcel shipment of this product.  
It meets or exceeds the drop test portion of the International Safe Transit Association Procedure 1A pre-shipment test specifications.



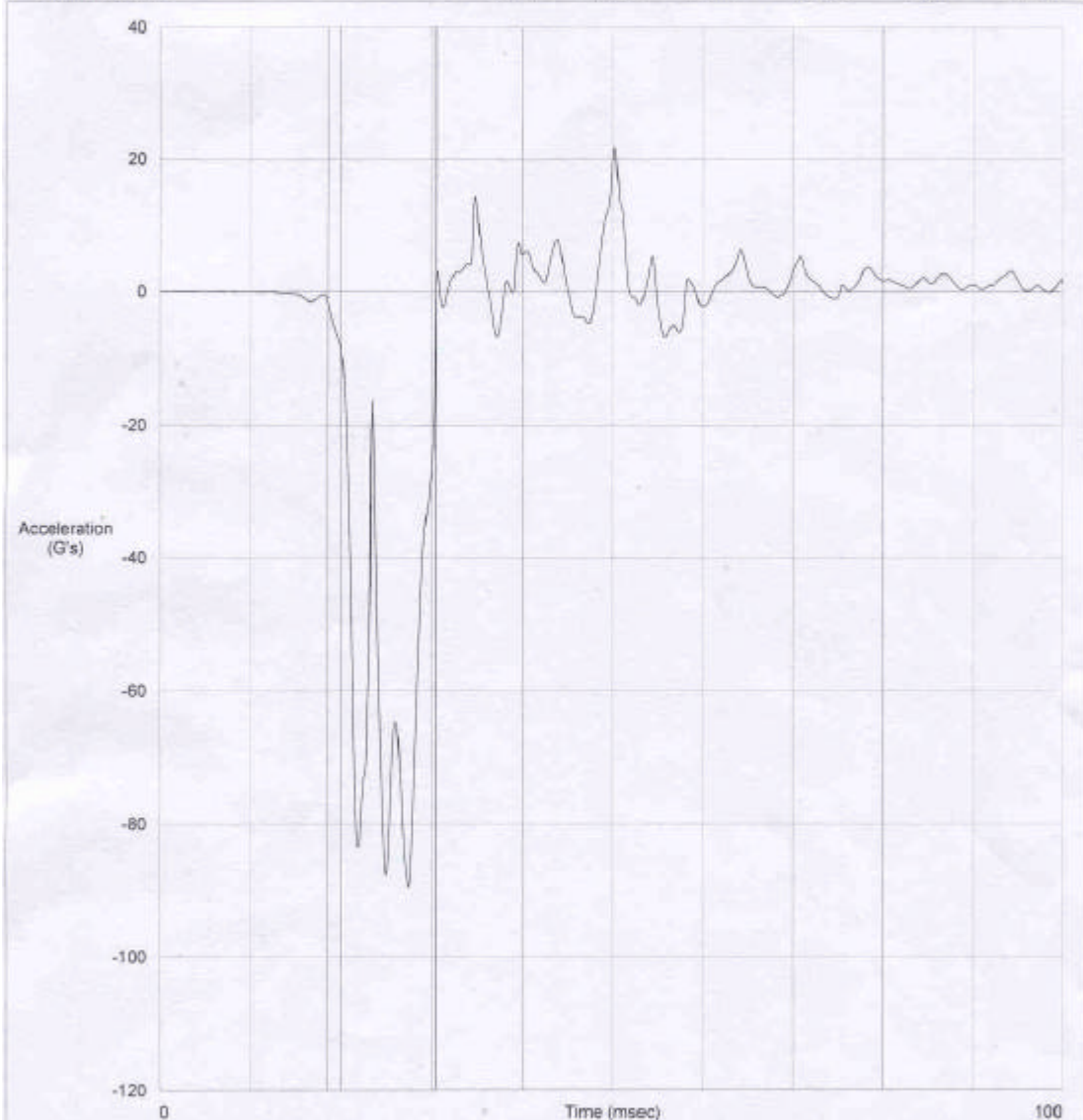
Please contact with me if you have any question!!

Mark Hsu  
Packaging Lab manager/Packaging Designer  
Tony Chang  
Packaging Designer



TEST  
PARTNER

Channel Description:	G's	msec	In/S	Filter Hz	Max G's	Min G's
Ch 3 Channel 3	-89.73	10.40	-237.42	330.00	21.79	-89.73

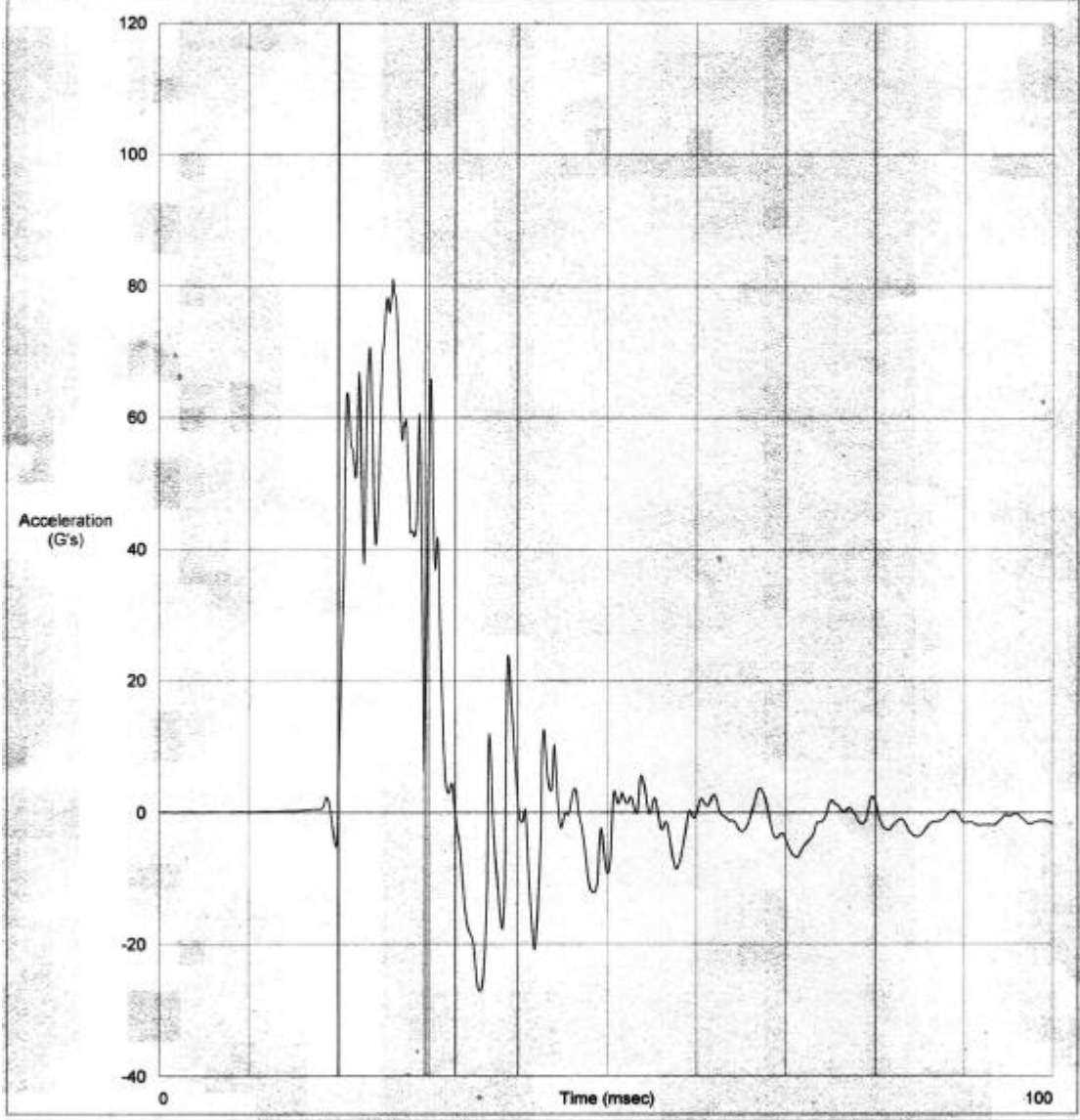


Test ID: AMB-2003HTT-C1  
Drop Height: 36 Inch

Remarks:



Channel Description:	G's	msec	In/S	Filter Hz	Max G's	Min G's
Ch 3 Channel 3	81.11	9.60	236.81	330.00	81.11	-27.14

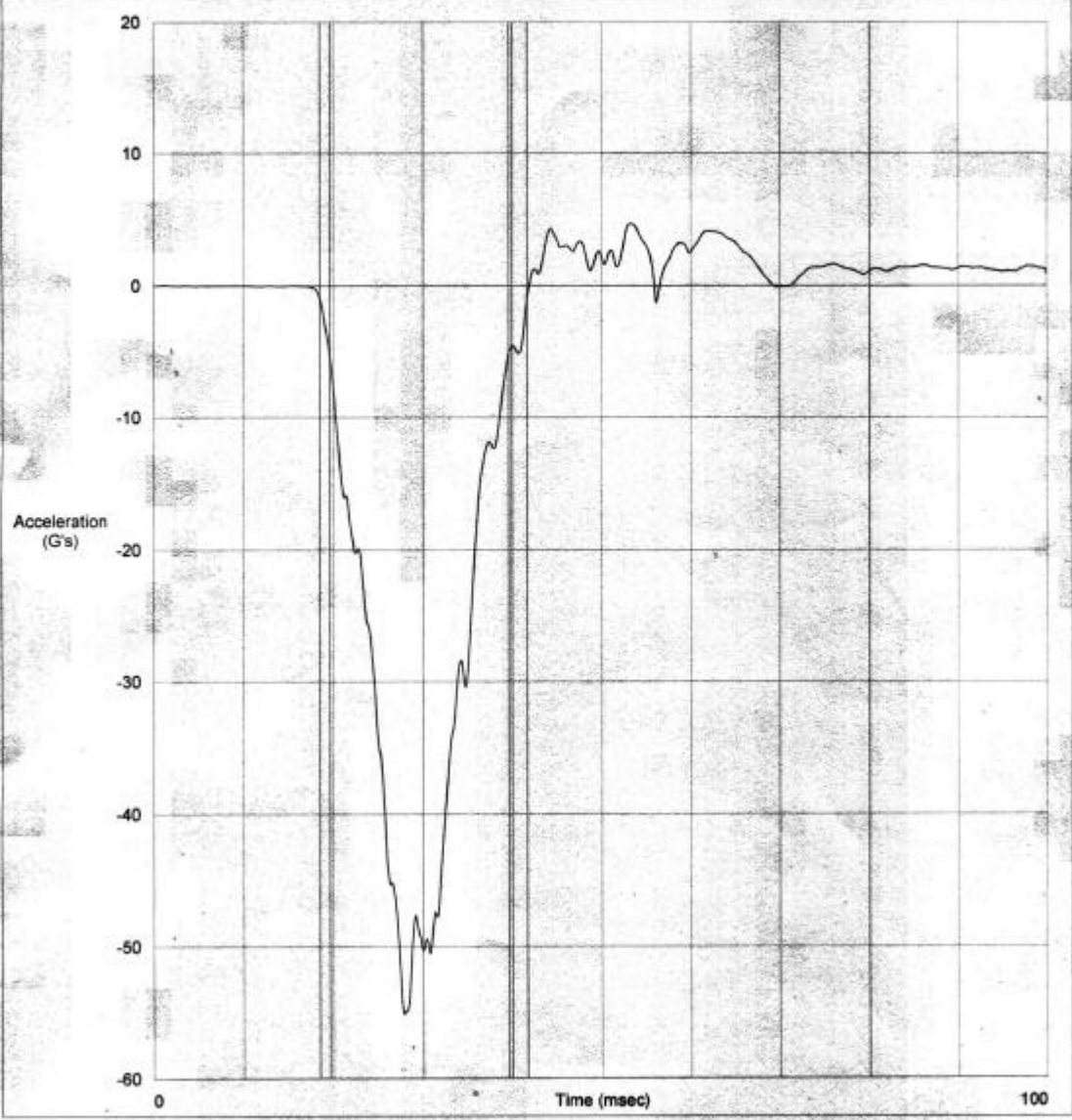


Test ID: AMB-2003HTT-C1  
Drop Height: 36 Inch

Remarks:



Channel Description:	G's	msec	In/S	Filter Hz	Max G's	Min G's
Ch 1 Channel 1	-55.13	20.00	-238.16	330.00	4.64	-55.13



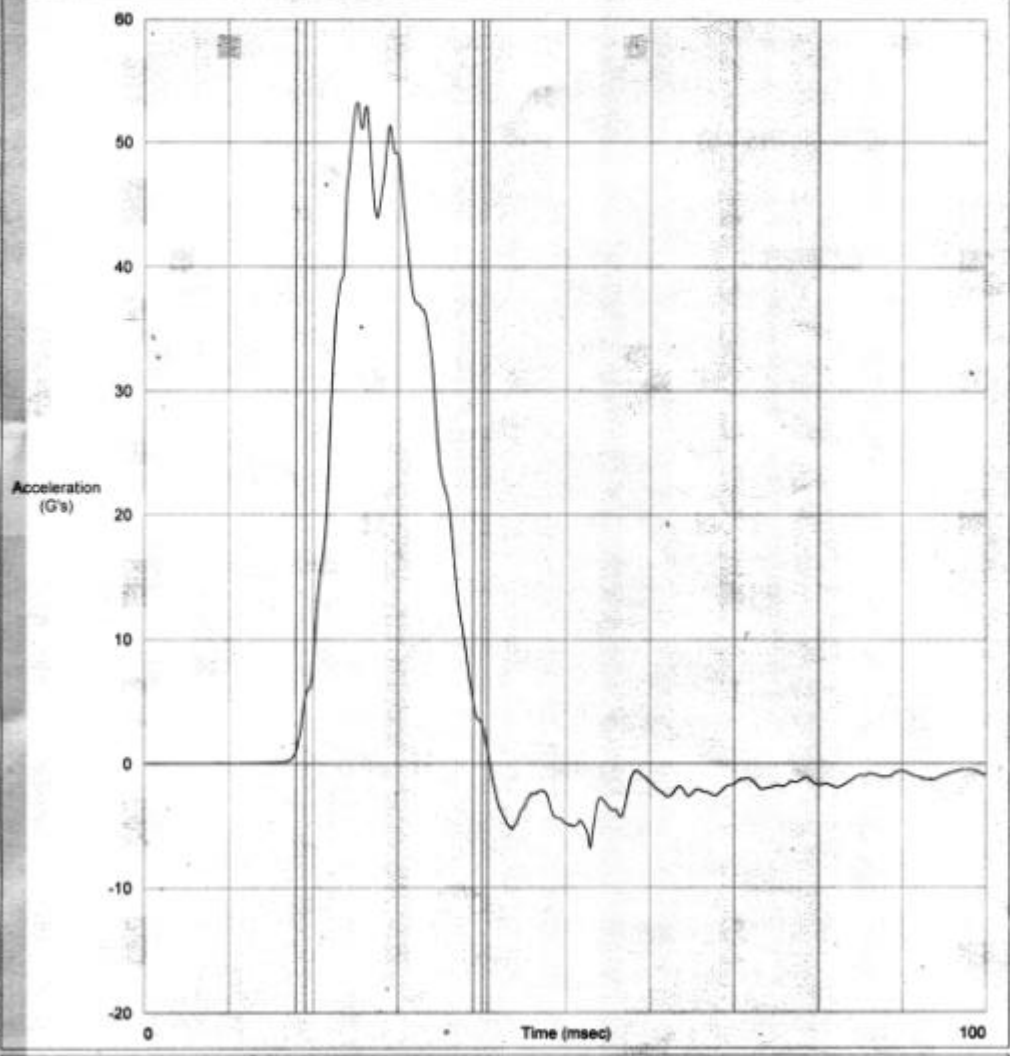
Test ID: AMB-2003HTT-C1  
Drop Height: 36 Inch

Remarks:



TEST PARTNER

Channel Description:	G's	msec	InvS	Filter Hz	Max G's	Min G's
Ch 1 Channel 1	53.24	19.90	255.93	330.00	53.24	-6.86

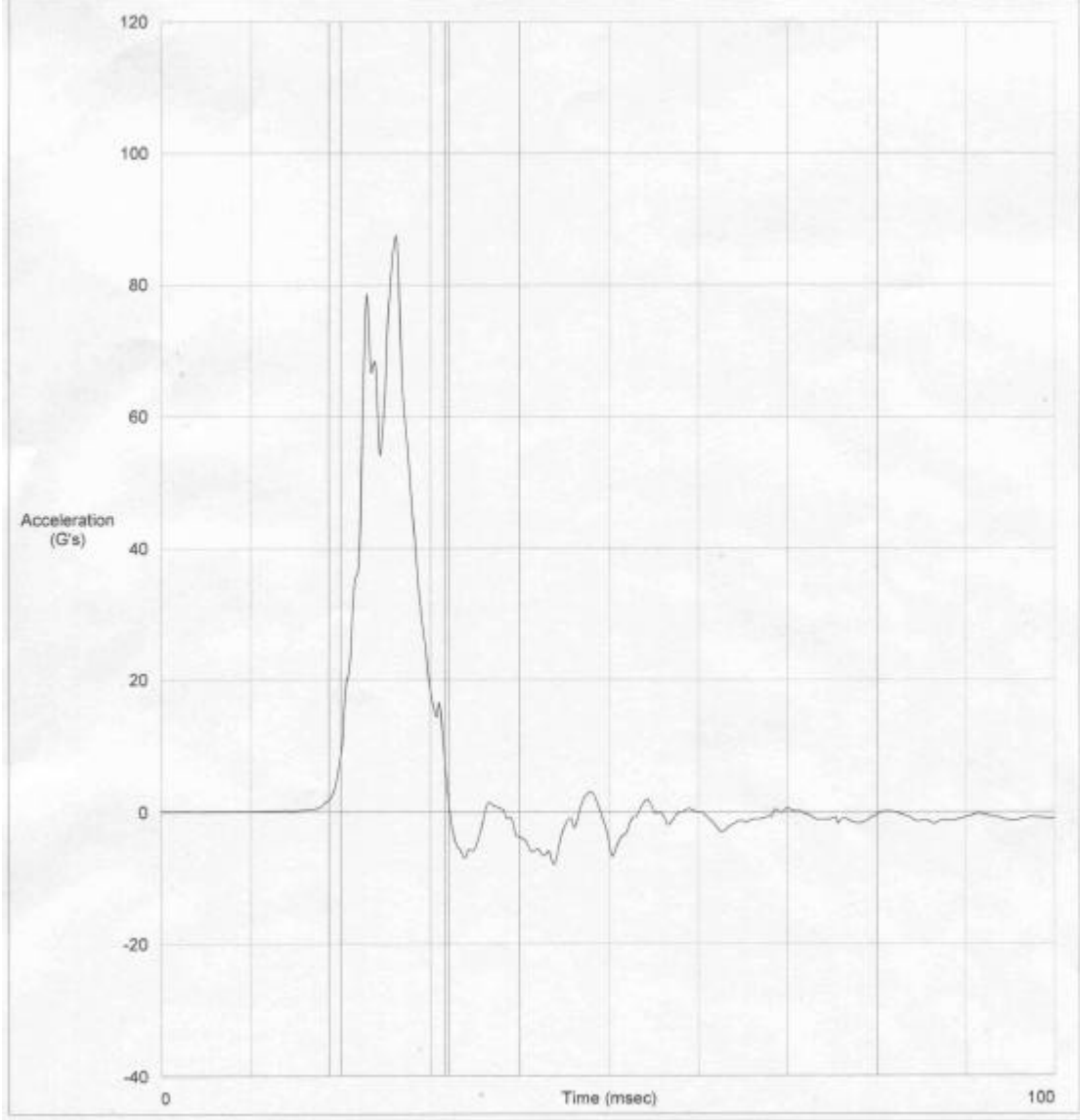


Test ID: AMB-2003HTT-C1  
Drop Height: 36 Inch

Remarks:



Channel Description:	G's	msec	In/S	Filter Hz	Max G's	Min G's
Ch 2 Channel 2	87.52	11.60	208.30	330.00	87.52	-7.98



Test ID: AMB-2003HTT-C1  
Drop Height: 36 Inch  
Remarks:

Acceleration vs. Time

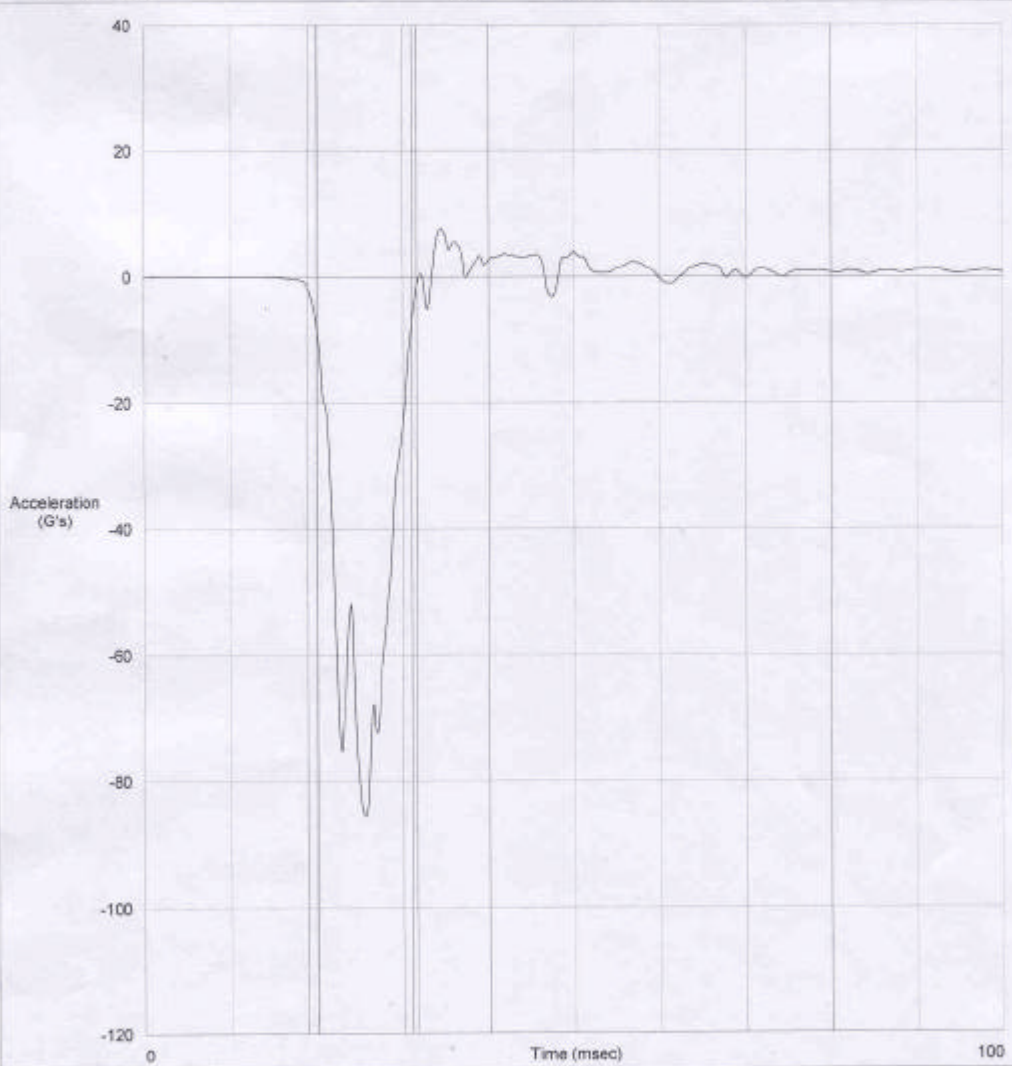
Right  
C:\Program Files\TP3\AMB2003-1-1.PL3

03:46:19 PM  
Mar-02-2001



**TEST  
PARTNER**

Channel Description:	G's	msec	In/S	Filter Hz	Max G's	Min G's
Ch 2 Channel 2	-85.56	10.90	-216.96	330.00	7.72	-85.56



Test ID: AMB-2003HTT-C1  
Drop Height: 36 Inch

Remarks: