



Test Report No.: T100916-05-A0

Client

Name : **AAEON Technology Inc.**

Address : **5F, No. 135, Lane 235, Pao Chiao Rd., Hsin-Tien City, Taipei,
Taiwan**

Test Item : Green Communication Server

Identification : xxxxGCS-1100ixx-xxx-xxxxxxx (x=0-9, A-Z, "-" or blank)

Testing laboratory

Name : **Prodigy Technology Consultant Co., Ltd.**

Address : **No.181, Sec. 2, Wunhua 1st Rd., Linkou District, New Taipei
City 244, CHINESE TAIPEI**

Test Result : The test item passed.

Prepared By :

Prepared By :

Signature
Yama Cheng
Senior Engineer

Feb. 21, 2011

Date

Approved By:

Signature
Angus Hsu
General Manager

Feb. 21, 2011

Date



Instrumentation Record Data Sheet

Test Sample No.: 01

Product: Green Communication Server

Model: xxxxGCS-1100ixx-xxx-xxxxxxx (x=0-9, A-Z, "-" or blank)

Test	Instr No. S/N.	Range Used	* Instruments, Type	Maker	Model	Calibration Date	Calibration Due
------	----------------	------------	------------------------	-------	-------	------------------	-----------------

Electric Strength Test Insulation Resistance Test	27- 1310154	0-5000Vac, 0-6000Vdc, 0-9999M Ω ,100 mA	Withstanding Voltage and Insulation Tester	Extech	7451	2010-10-29	2011-10-28
--	-------------	---	---	--------	------	------------	------------



Test Sample No.: 01

Product: Green Communication Server

Model: xxxxGCS-1100ixx-xxx-xxxxxxx (x=0-9, A-Z, "-" or blank)

File -- Project P100916-05 Print date -- Page 3 of 3

Tested by: J. Dad signature Tested by: Jim Chen, David Peng print Test date: 2011-02-18

Sample #: 01 Instrument Code / Range: 27(6KV,10mA,60s)

5.2.2 - ELECTRIC STRENGTH TEST

METHOD

While the unit was in a well heated condition after the Heating Test [] other method, an ac or dc potential was gradually increased from zero to the test potential given below. The voltage was applied and maintained for a period of one minute between the points indicated. All switches, relays, contactors, triacs or equivalent in the test circuit were closed or shunted.

RESULTS

5.2 TABLE: Electric strength tests, impulse tests and voltage surge tests				
Test voltage applied between:		Voltage shape (AC, DC, impulse, surge)	Test voltage (V)	Breakdown Yes / No
From/To	Insulation Type			
Secondary Mainboard (P/N: EMB-9459T) CN25 Pin 15 / Output Connector (COM1 ~ COM8)	--	DC	2000	No
Secondary Mainboard (P/N: PER-T167) CN11 Pin B05, B06 / Output Connector (COM1 ~ COM8)	--	DC	2000	No
Supplementary information: [] Method used to bring sample to "well heated" condition if test is not conducted after the Heating test: There was [] was no [] indication of breakdown as a result of applying the test voltage to the indicated locations for 60 seconds.				

Comments:--



Photo Documentation

Test Sample No.: 01

Product: Green Communication Server

Model: xxxxGCS-1100ixx-xxx-xxxxxxx (x=0-9, A-Z, "-" or blank)

Test Condition: CN25 Pin 15 to Output Connector (COM1~COM8)

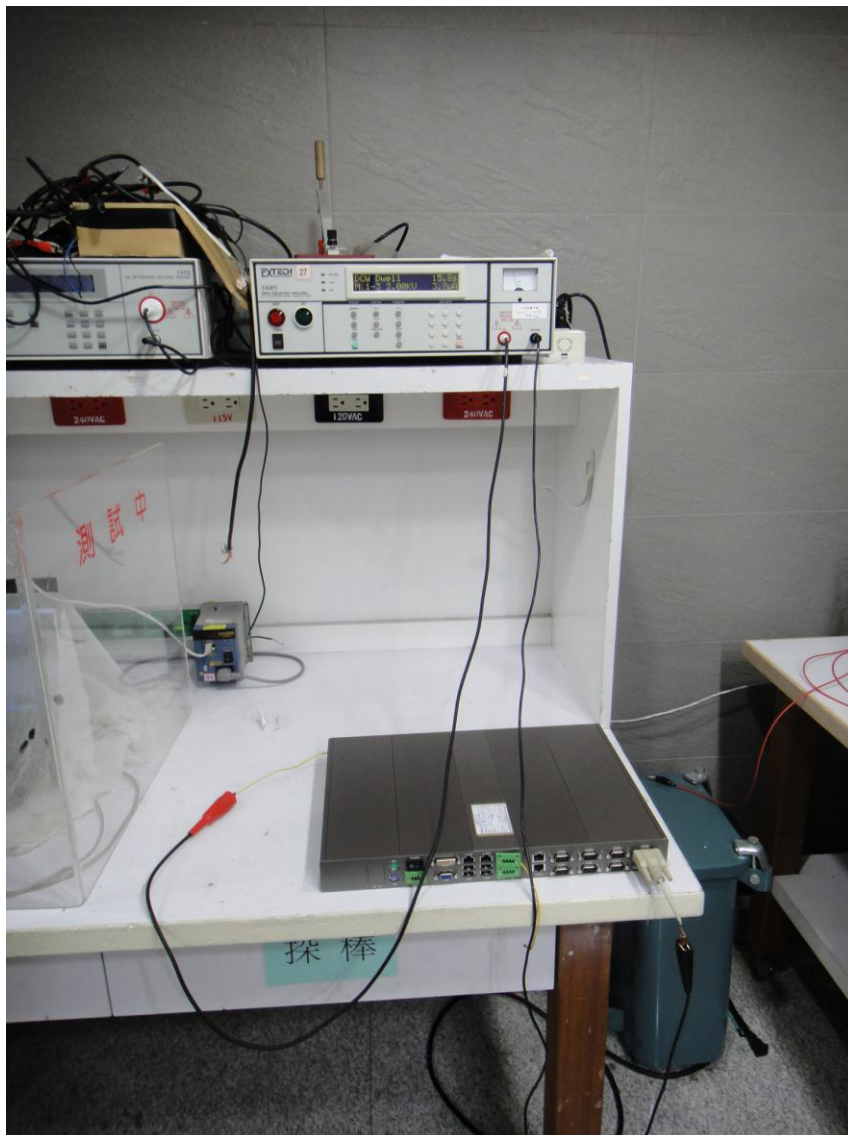




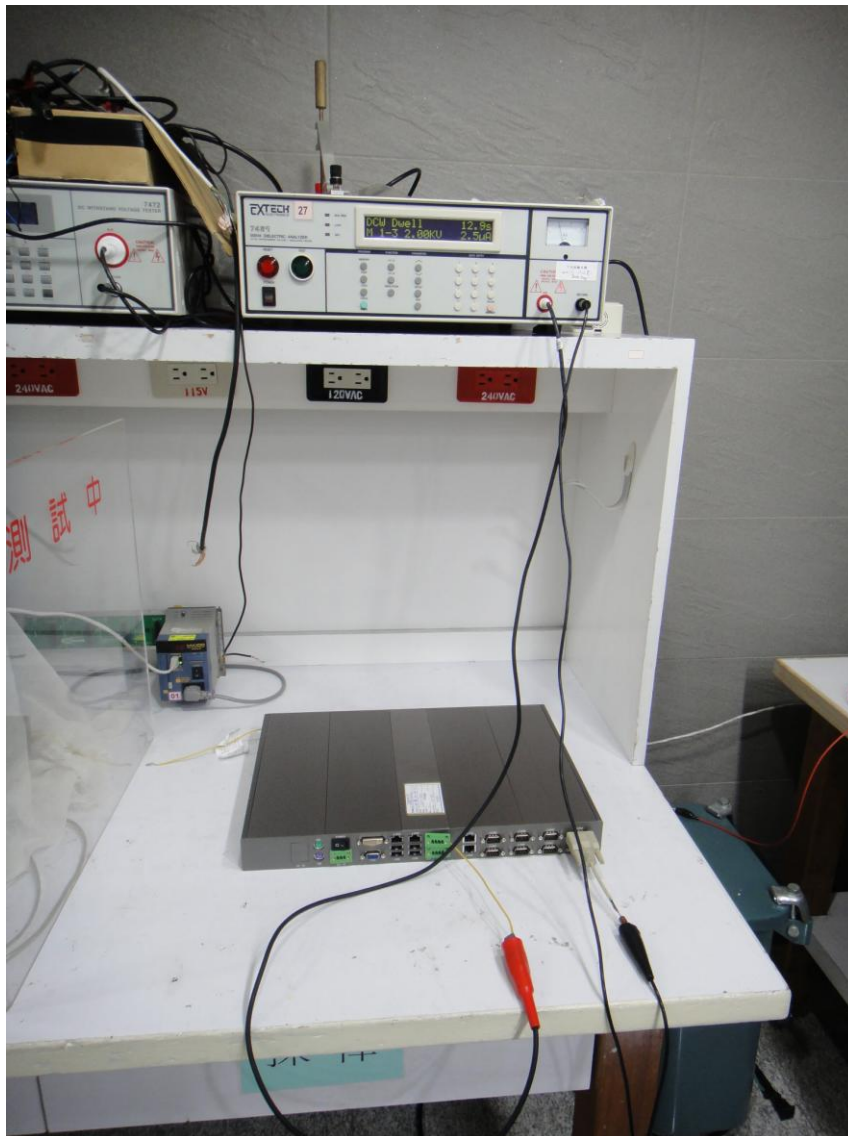
Photo Documentation

Test Sample No.: 01

Product: Green Communication Server

Model: xxxxGCS-1100ixx-xxx-xxxxxxx (x=0-9, A-Z, "-" or blank)

Test Condition: CN11 Pin B05, B06 to Output Connector (COM1~COM8)



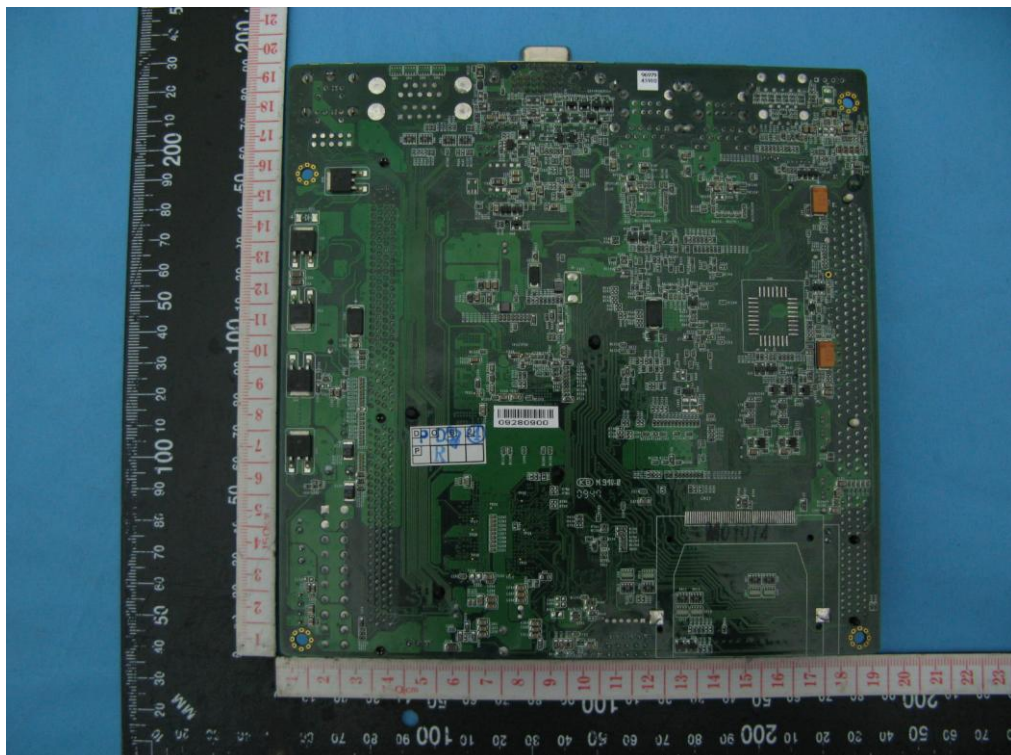
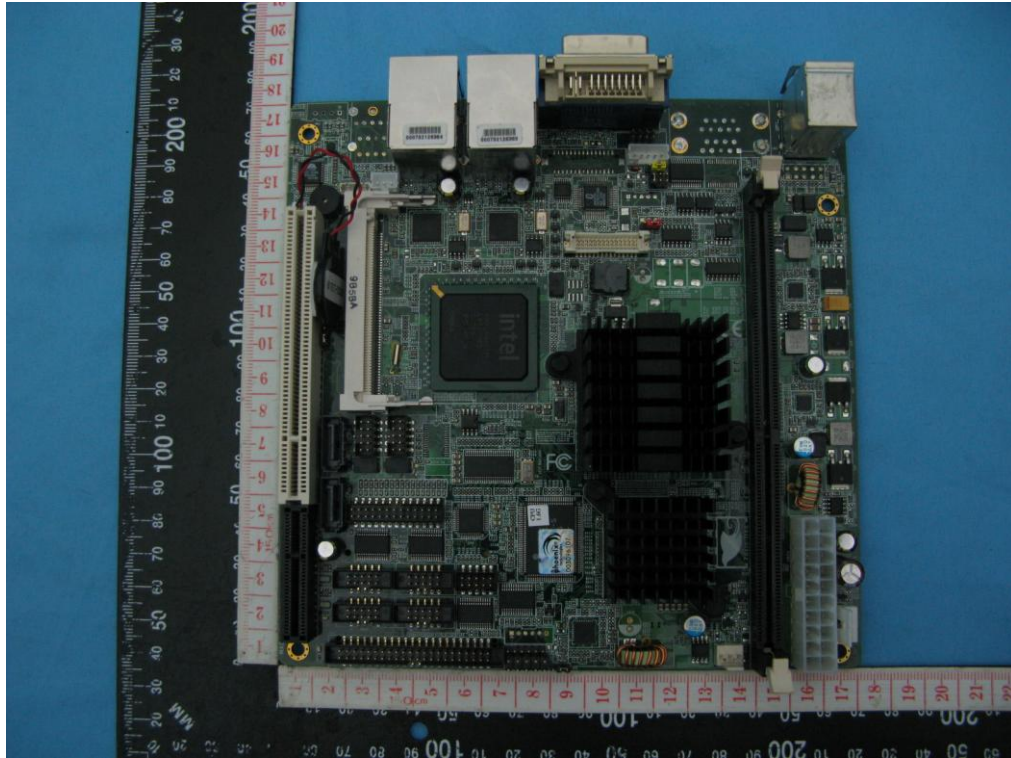


Prodigy Technology
Consultant Co., Ltd.

Page 6 of 10
Photo Documentation

T100916-05-A0

Test Sample No.: 01
Product: Mainboard
Model: EMB-9459T





Prodigy Technology
Consultant Co., Ltd.

Page 7 of 10

T100916-05-A0

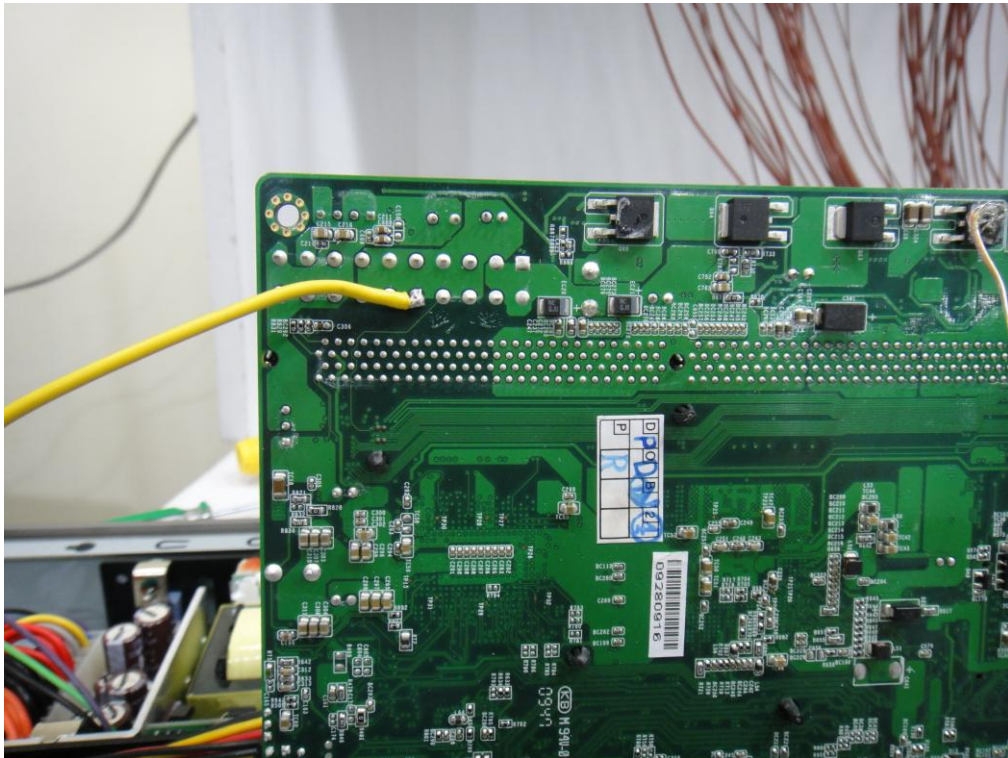
Photo Documentation

Test Sample No.: 01

Product: Mainboard

Model: EMB-9459T

Test Condition: CN25 Pin 15 to Output Connector (COM1~COM8)

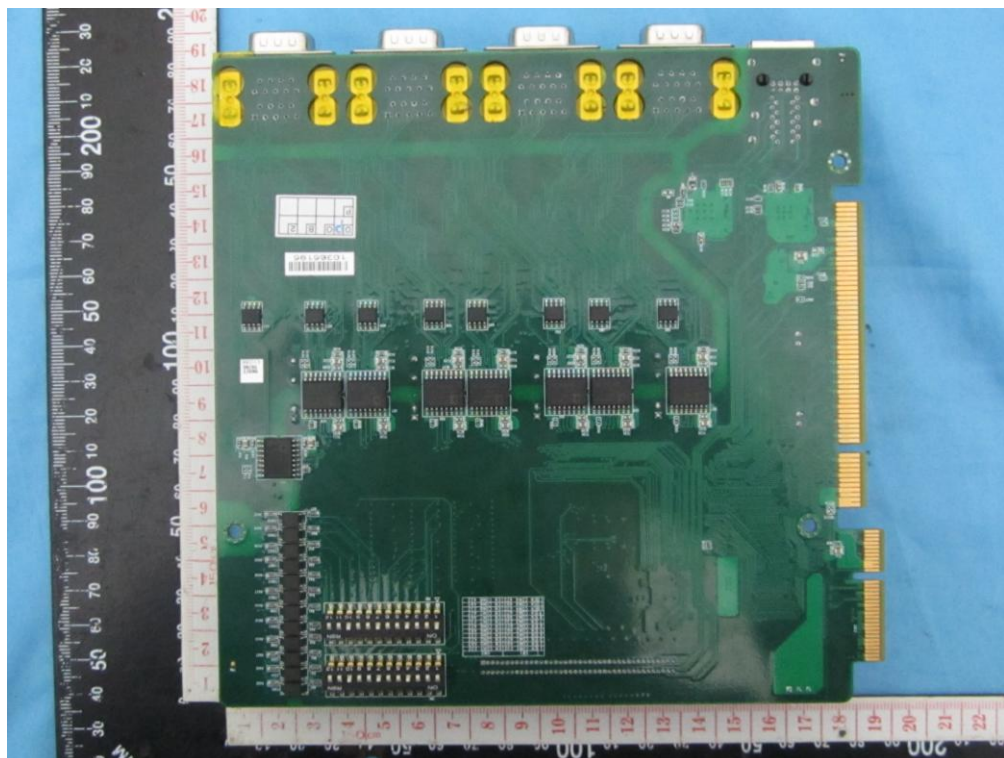
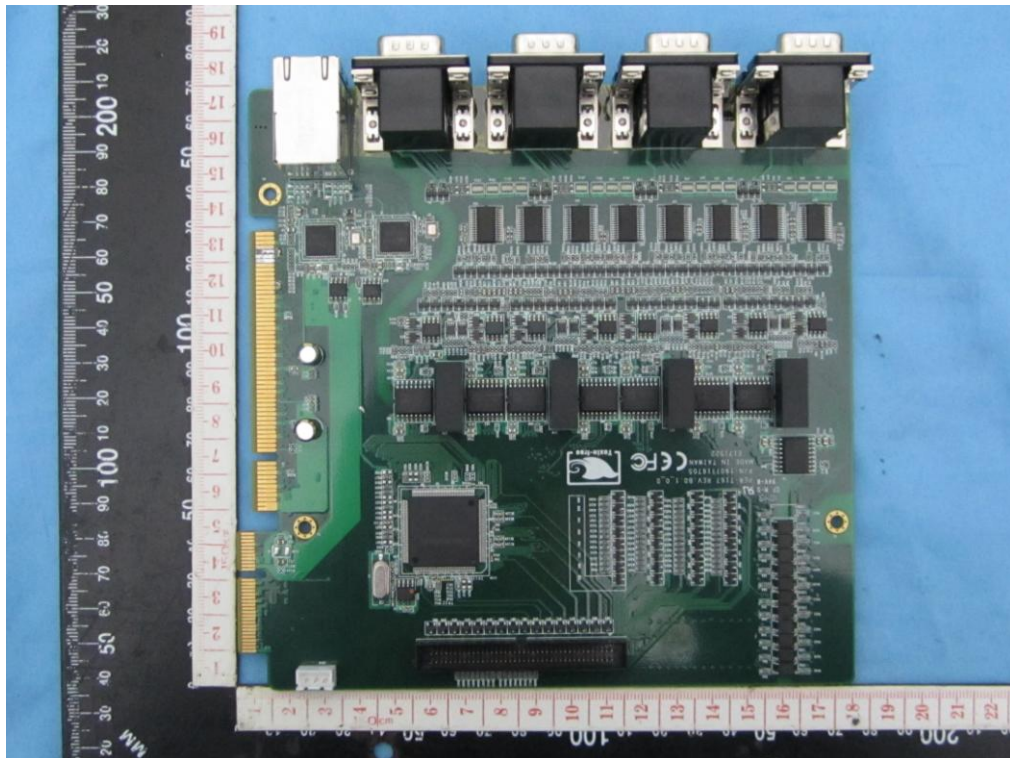




Test Sample No.: 01

Product: PCI Isolated COM Card

Model: PER-T167



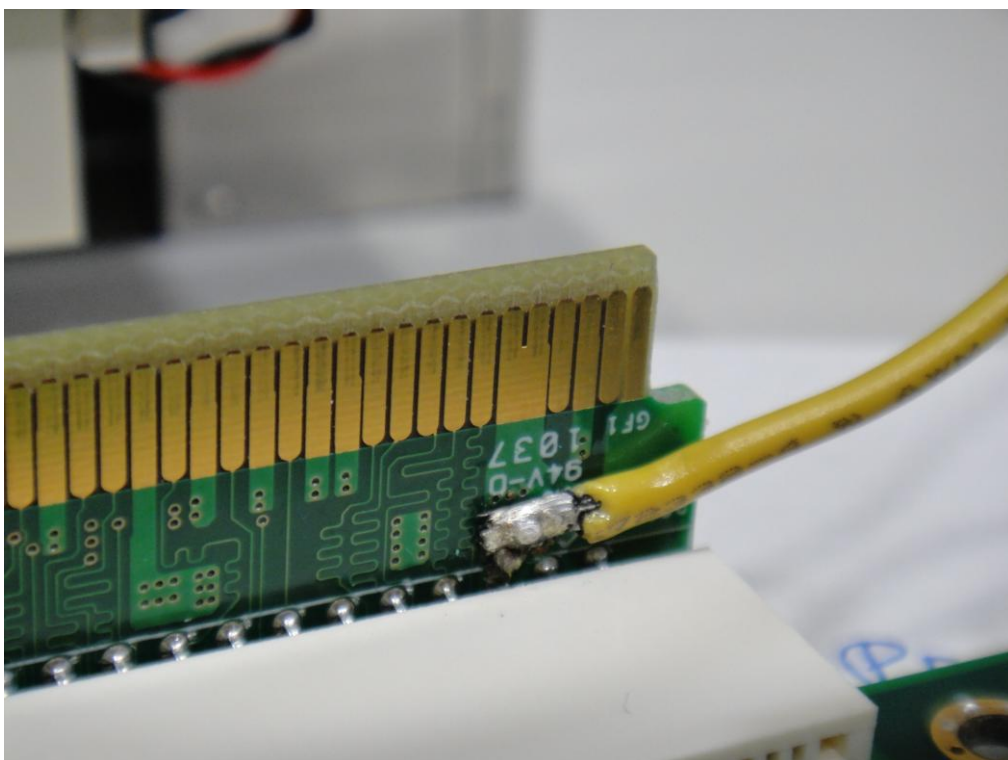
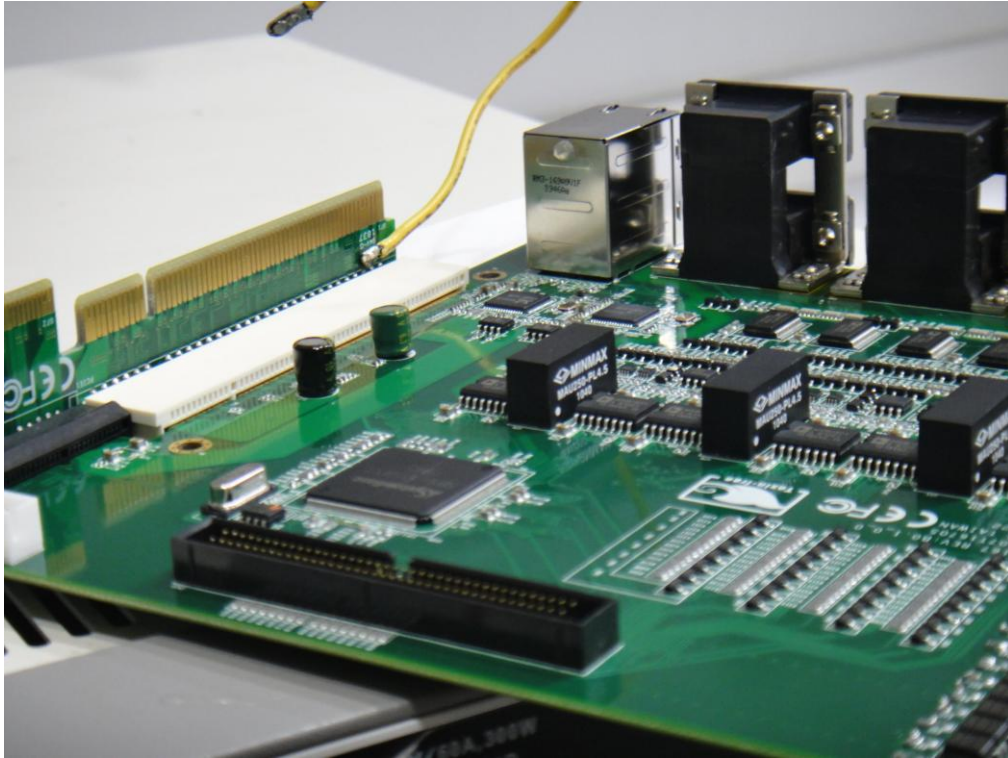


Test Sample No.: 01

Product: PCI Isolated COM Card

Model: PER-T167

Test Condition: CN11 Pin B05, B06 to Output Connector (COM1~COM8)





END OF DATASHEET PACKAGE. THIS PAGE INTENTIONALLY LEFT BLANK