



**AAEON Technology INC.**  
ISO-9001/ISO-14001 Certified  
Industrial Automation PCs

# **SBC-557**

## **Thermal Image Analysis Report**

**Release Date: JAN.09, 2001**

---

**Issue Stamp**

---

**QA Manager**

---

**QE Manager**

---

**Test Engineer**

# Thermal Image Analysis

---

**I . Model Name: SBC-557 Rev.A1**

**II . Description: Super 7 Half-size CPU Card with LCD, Ethernet, &SSD**

**III . Date: JAN. 09, 2001**

**IV . Measure Site: AAEON QE Dept.**

**V . Issued by : Kuochen Huang**

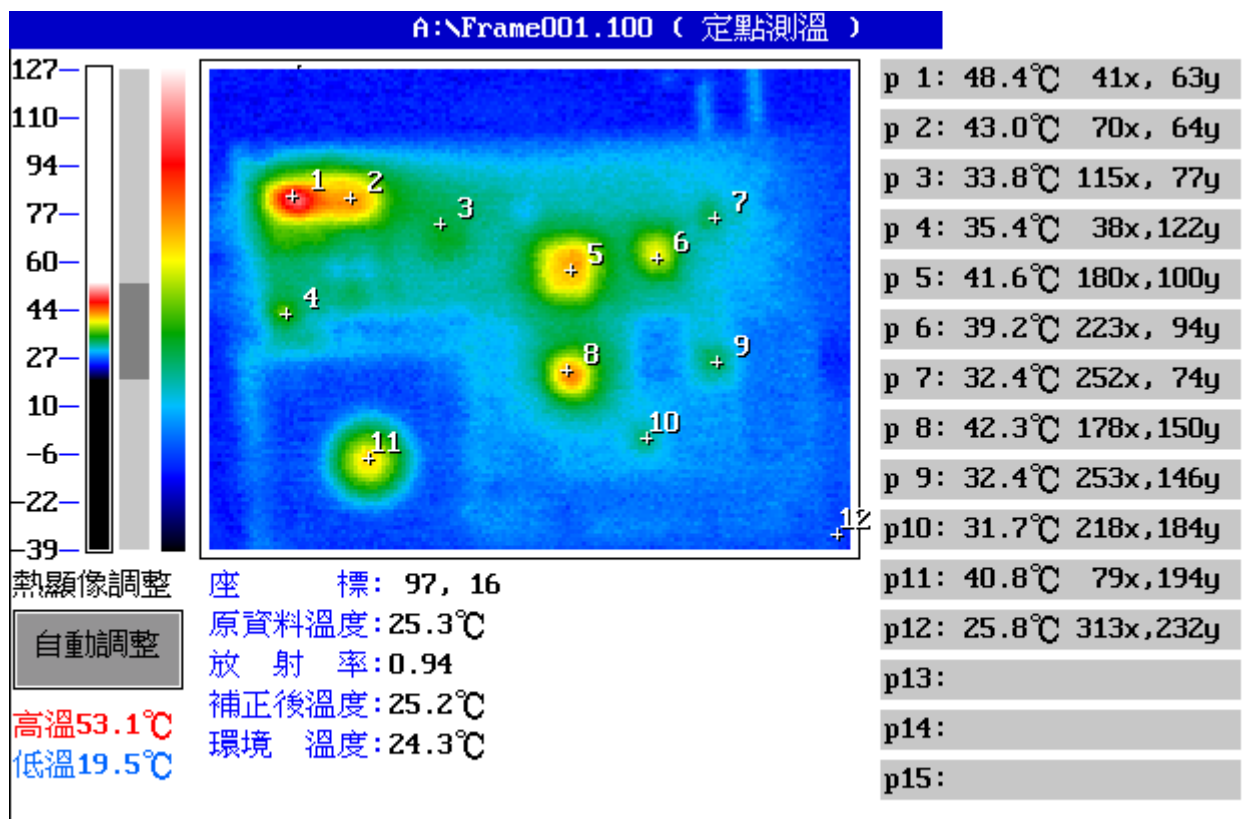
**VI.Equipment: TVS-100 series by NIPPON AVIONICS CO., LTD.**

**VII. Simulation Environment:**

- **Temperature: 25.8 degrees C**
- **CPU: Pentium MMX 233MHz**
- **RAM: 32 MB**
- **Hardware: DiskOnChip**
- **Application Software: QAPLUS/FE V5.5**
- **Take Picture Time: Power on 30 minutes after**

**Temperature Profile Test:**

Component Side:



Point	Position	Describe	Ts	Tm	Note
1	U2	9148bf-36 9942 CK920431		48.4°C	
2	Q1	AMS 1083CT 9737		43.0°C	
3	U4	ALi M1541 A1 100MHz 9910 TS07 XD278510000E		33.8°C	
4	U1	9924 LTC1553CG J88781		35.4°C	
5	U6	CHIPS B69000 W69000B4 9916-b		41.6°C	
6	U15	RTL8139A 94147T1		39.2°C	
7	U17	HIN 213ECA L9918GFRC		32.4°C	
8	U7	ALi M154C A1 9931 TM07 XB4N7300000E		42.3°C	
9	U16	14S8416815		32.4°C	
10	U10	14S8203280		31.7°C	
11	U5	Pentium MMX 233MHz		40.8°C	
12		The Room Temperature		25.8°C	

1. Operation Temperature (°C):

Ts = Defined by component specification ; Tm = Measured by QE

2. ※ = Ts - (Tm + 60 - 25)