

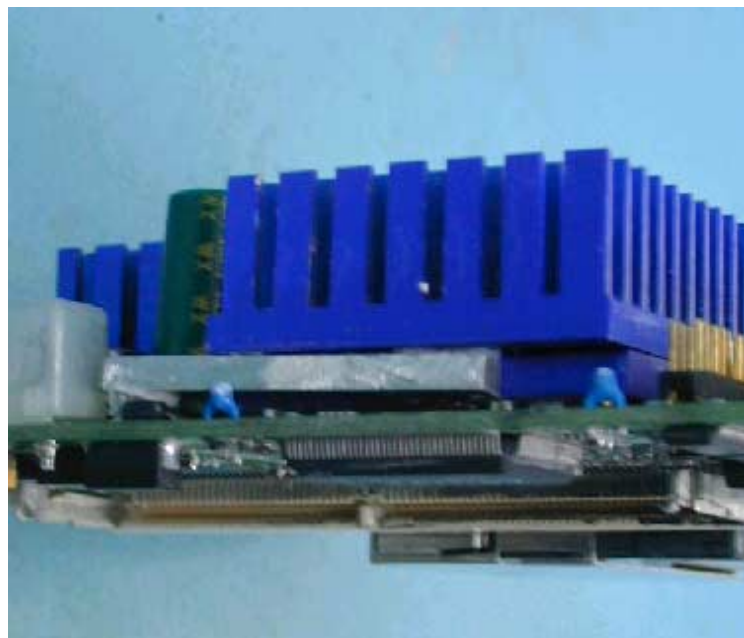


AAEON Technology INC.
ISO-9001/ISO-14001 Certified
Industrial Automation PCs

Gene-5310

Thermal Image Analysis Report

Release Date : AUGUST. 24. 2001



Issue Stamp

QA Manager

QE Manager

Test Engineer

Thermal Image Analysis

I . Model Name: Gene-5310 Rev.A1.1 BIOS.A1.2 07/31/2001

II . Description: Intel Low-power SubCompact Board With LCD, LVDS, Dual Ethernet, Compact Flash, TV-out, & Audio

III . Date: AUGUST. 24, 2001

IV . Measure Site: AAEON QE Dept.

V . Issued by : Joe Huang

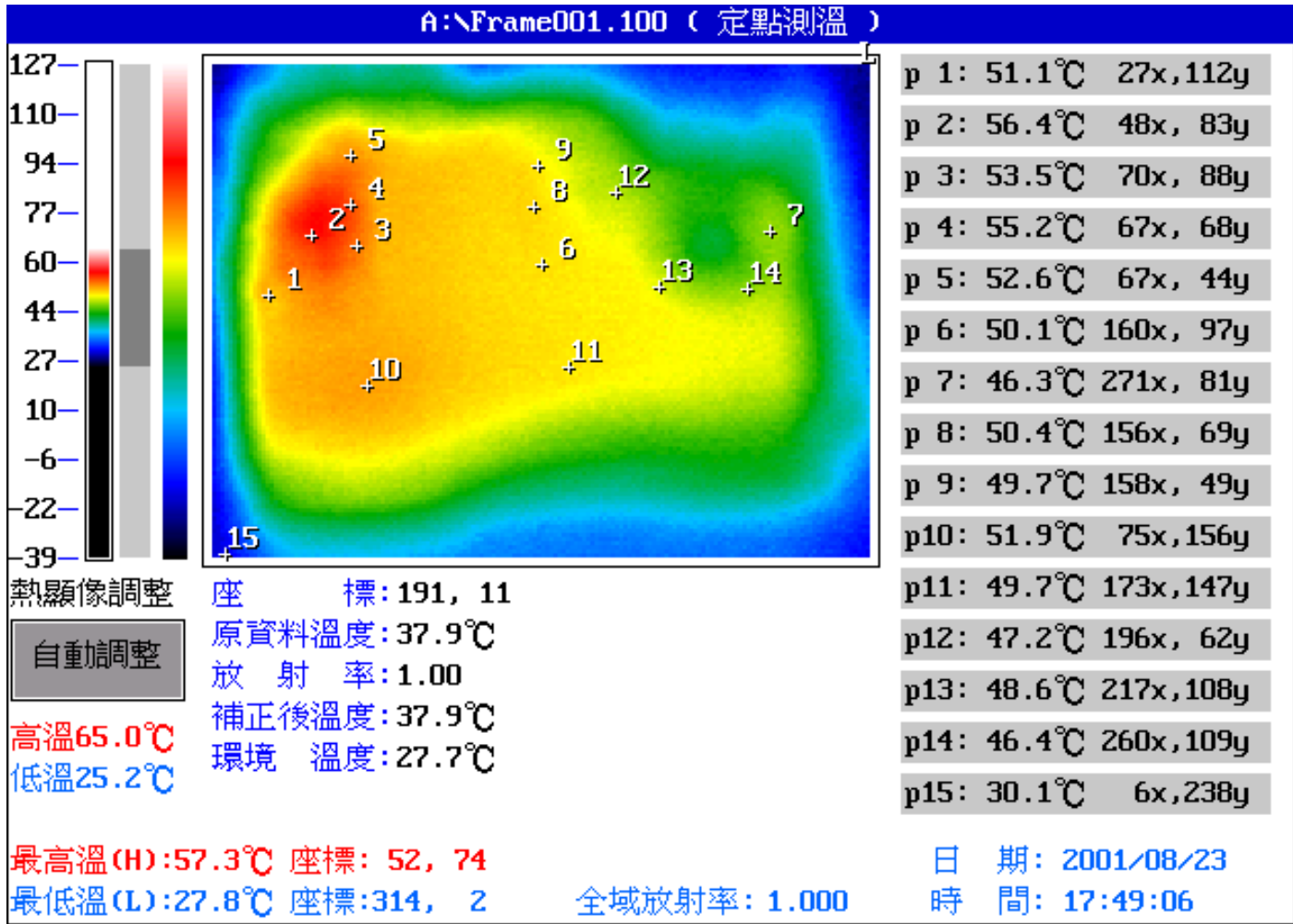
VI.Equipment: TVS-100 series by NIPPON AVIONICS CO., LTD.

VII. Simulation Environment:

- **Temperature: 25 degrees C**
- **CPU: Intel Tillamook BGA MMX 266**
- **RAM: 128 MB 100MHz**
- **Hardware: IBM DTLA-307045 46.1GB 7200RPM**
- **Application Software: 3Dmark2000**
- **Take Picture Time: Power on 30 minutes after**

Temperature Profile Test:

Component Side:



Point	Position	Describe	Ts	Tm	Note
1		Open space		51.1°C	
2	L16	2R4 JON3		56.4°C	
3	D4	SK32B		53.5°C	
4	C24	330u		55.2°C	
5		Open space		52.6°C	
6	U2	74LVC07AD		50.1°C	
7	U20	82559ER		46.3°C	
8	U5	HCT245D0556K		50.4°C	
9	U30	HCT245D0556K		49.7°C	
10		Left Heat Sink		51.9°C	
11		Right Heat Sink		49.7°C	
12	U3	M29F002BT 70K6		47.2°C	
13	U19	93LC46B		48.6°C	
14	U21	93LC46B		46.4°C	
15		The Room Temperature		30.1°C	

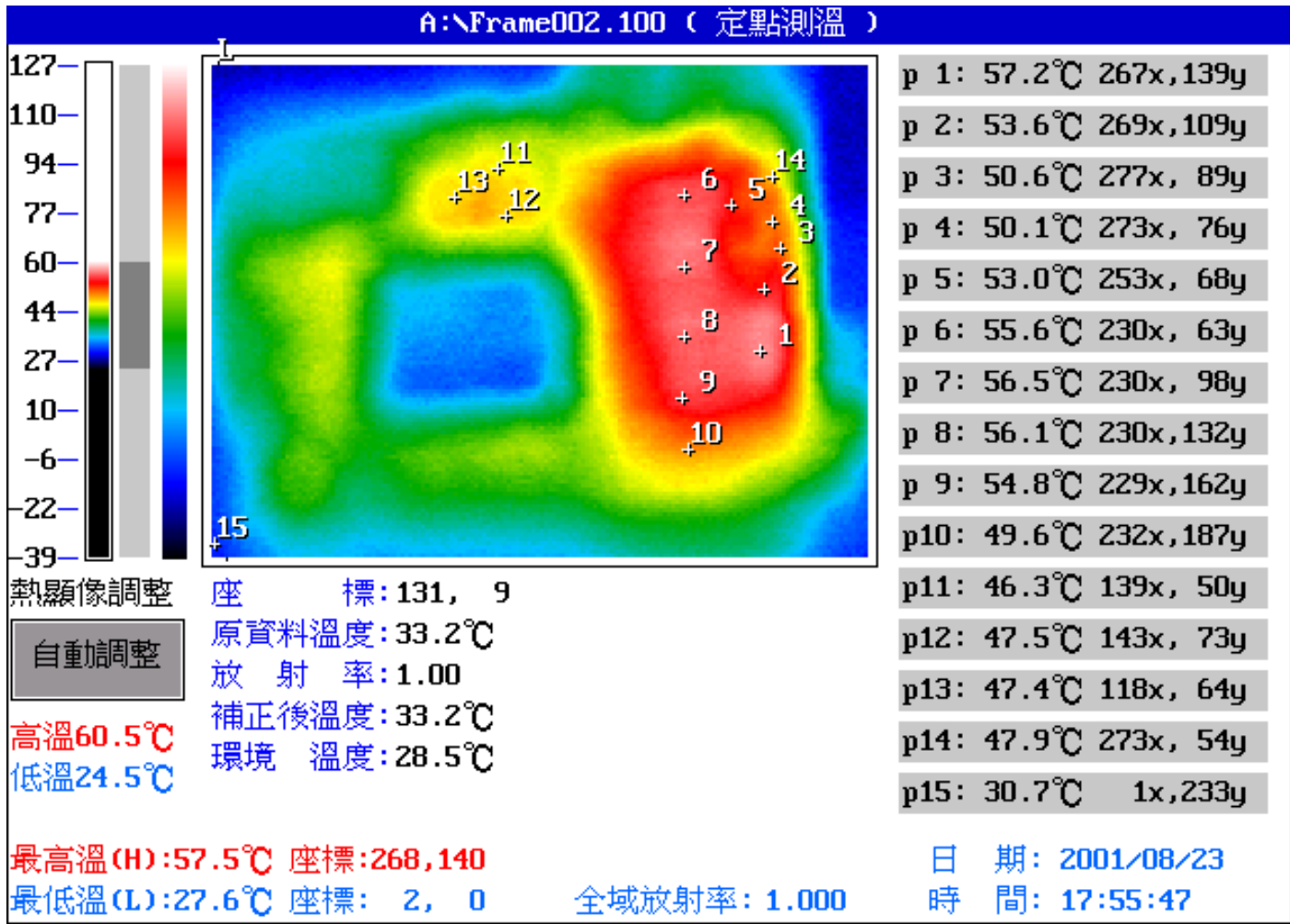
1. Operation Temperature (°C):

Ts = Defined by component specification ; Tm = Measured by QE

2. ※ = Ts - (Tm + 60 - 25)

Temperature Profile Test:

Component Side:



Point	Position	Describe	Ts	Tm	Note
1	U28	EliteMT LP61G6464BF-5		57.2°C	
2		Open Space		53.6°C	
3	F2	NEC D45128163G5-A80-9JF/ PC100 128MB		50.6°C	
4	CT5	NEC D45128163G5-A80-9JF/ PC100 128MB		50.1°C	
5	D5	NEC D45128163G5-A80-9JF/ PC100 128MB		53.0°C	
6	DIMM1	NEC D45128163G5-A80-9JF/ PC100 128MB		55.6°C	
7	DIMM1	NEC D45128163G5-A80-9JF/ PC100 128MB		56.5°C	
8	DIMM1	NEC D45128163G5-A80-9JF/ PC100 128MB		56.1°C	
9	DIMM1	NEC D45128163G5-A80-9JF/ PC100 128MB		54.8°C	
10	U29	EliteMT LP61L256AS-8		49.6°C	
11	U9	HIN 213ECA		46.3°C	
12	U6	OL46 LS125A		47.5°C	
13	U7	AITERA EPM7032 TC44-15		47.4°C	
14	CT1	22u		47.9°C	
15		The Room Temperature		30.7°C	

1. Operation Temperature (°C):

Ts = Defined by component specification ; Tm = Measured by QE

2. ※ = Ts - (Tm + 60 - 25)