

# **AAEON**

**AAEON Technology INC.**  
ISO-9001/ISO-14001 Certified  
Industrial Automation PCs

## **GENE-4312**

# **Environment Test Report**

**Release Date : Jan/15/2002**

---

**Issue Stamp**

---

**QE Manager**

---

**Test Engineer**

# Environment

**Model Name :** GENE-4312

**Test Date :** 01-15-2002

**Test Site :** AAEON QE Dept.

**Performed by :** Rex Chang

**Test Standard :**

Select	NO.	Description
√	IEC 68-2-30	Test DB : Damp Heat Test
√	IEC 68-2-61	Test Z/ABD : Climatic Sequence Test

**Testing Item :**

Temperature & Humidity Cycle  
Test Temperature & Humidity Power On/Off Test

**Additional Test Peripheral :**

Configuration	Model
Test Software	QAPLus 5.5
Test Fixture	Power on/off(110V) Fixture

**Testing Equipment :**

Programmable Temperature & Humidity Chamber  
Model : Ths-D4L+-100  
S/N : 1241  
Date of Calibration : 07-10-1998

**Sample Configuration & Quantity Under Test :**

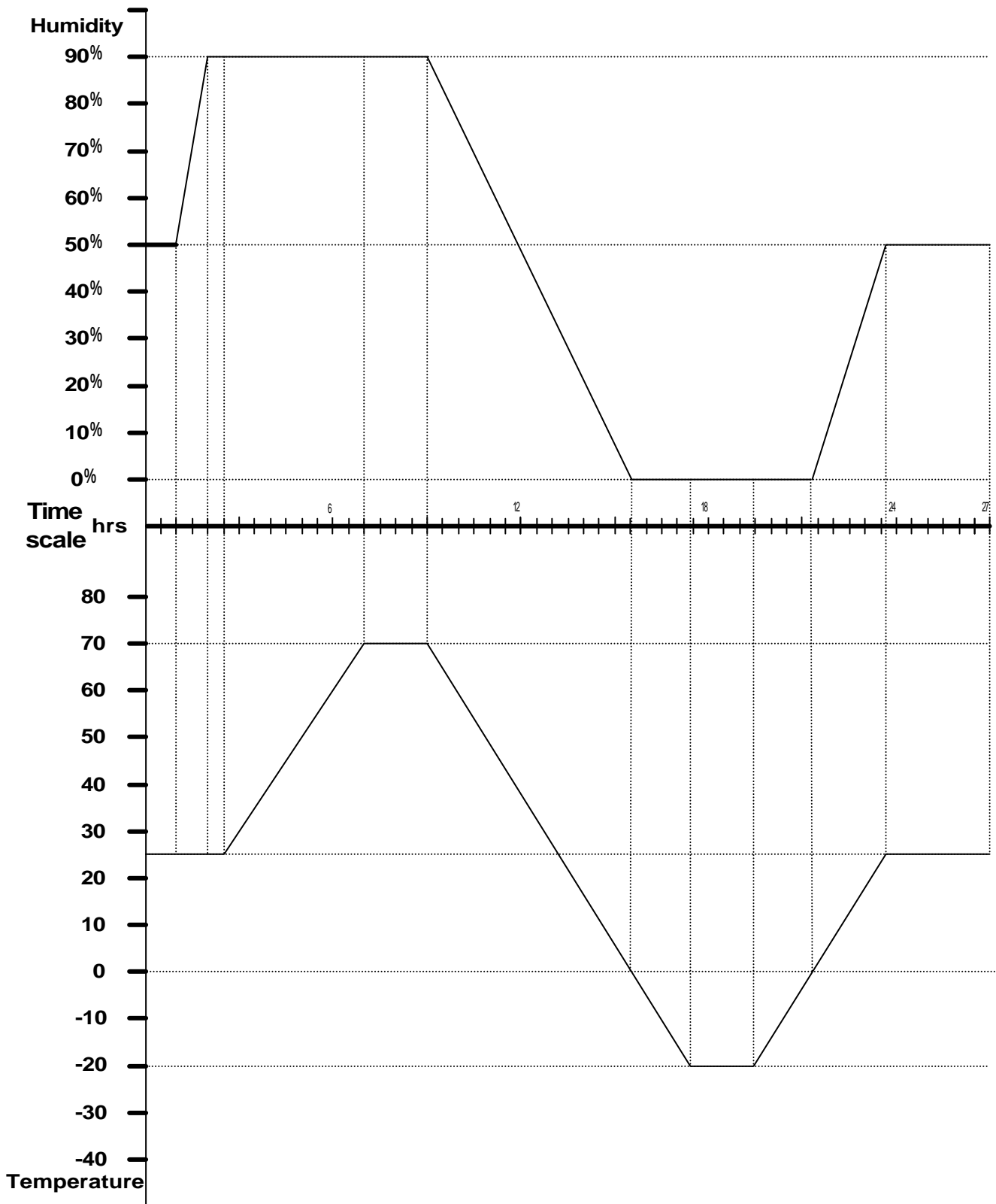
- 1.CPU : NS Geode Series (low-power) 300MHz
- 2.DRAM : PC-100 128MB SO-DIMM (NEC D45128163G5-A80-9JF)
- 3.Chipset : NS Geode CS5530A
- 4.VGA Chipset : NS Geode CS5530A
- 5.I/O Chipset : Winbond W83977F. Full 16-bit I/O ` decoded

**Test Result :**

Standard	Description	Result
IEC 68-2-30	Temperature & Humidity Power On/Off Test	Pass
IEC 68-2-61	Temperature & Humidity Cycle Test(Run QAPLus 5.5)	Pass

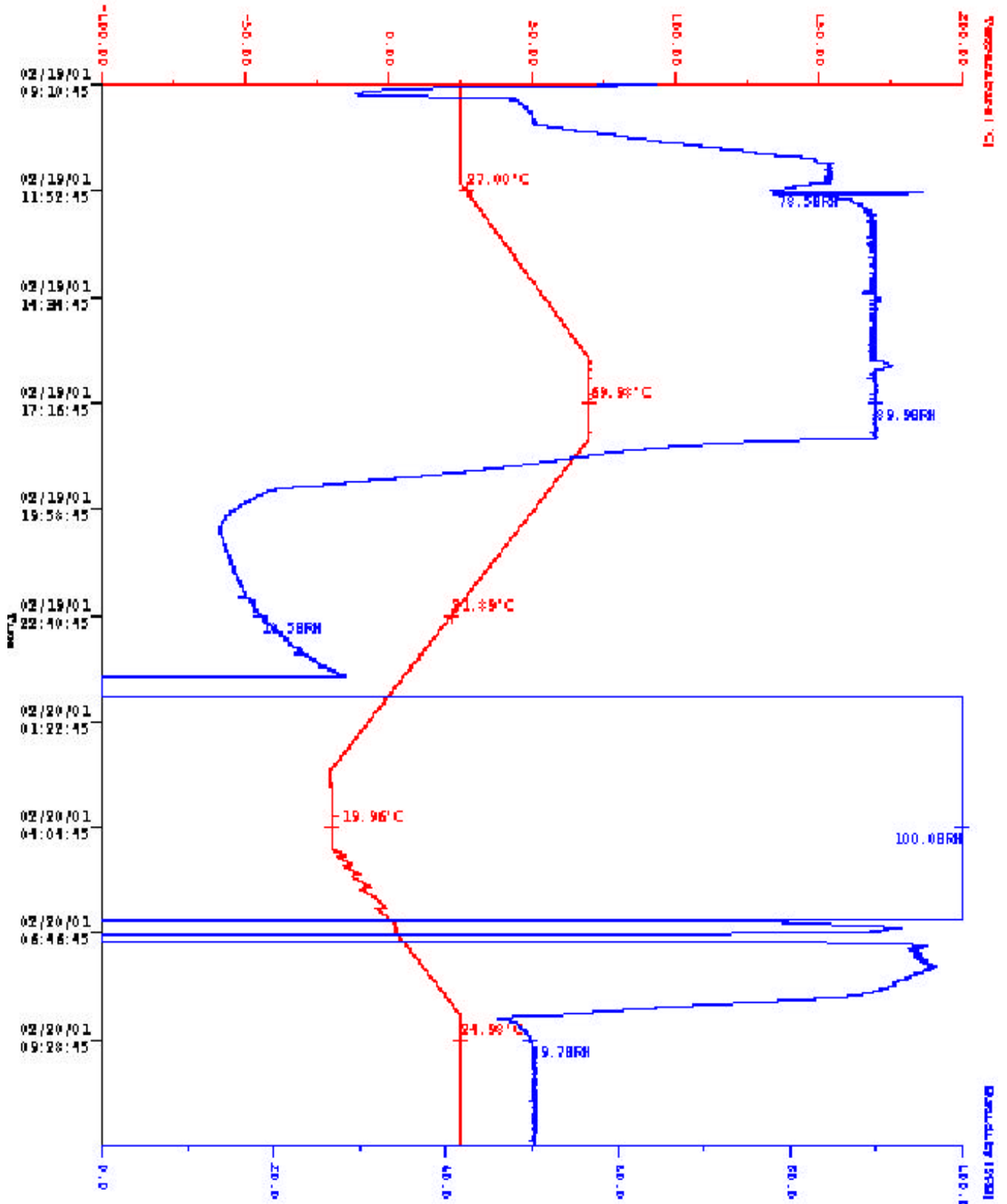
# Environment

## Temperature & Humidity Power On/Off Test



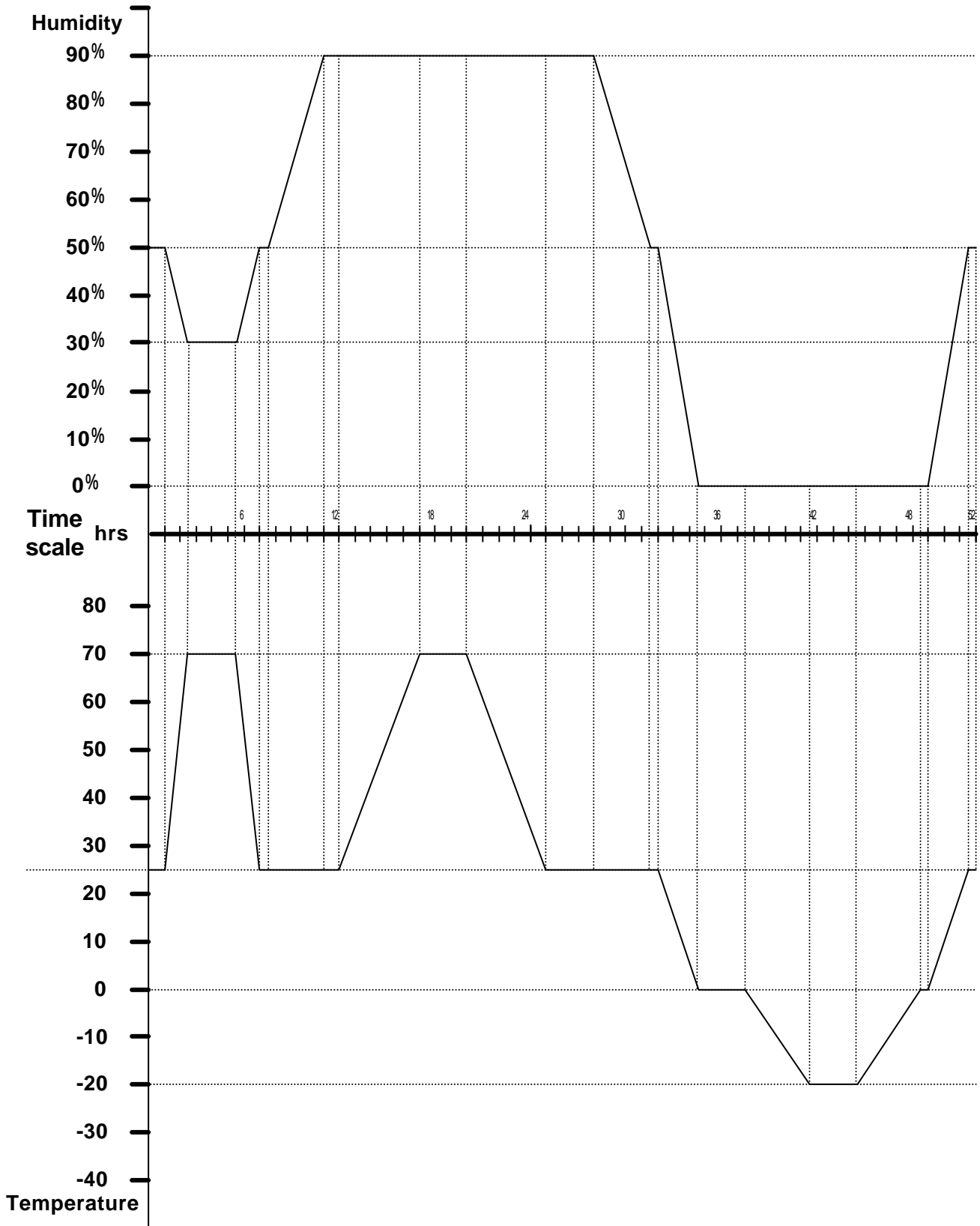
# Environment

## Temperature & Humidity Power On/Off Test



# Environment

Temperature & Humidity Cycle Test(Run QAPLus 5.5)



# Environment

## Temperature & Humidity Cycle Test (Run QAPlus 5.5)

