



AAEON Technology INC.
ISO-9001/ISO-14001 Certified
Industrial Automation PCs

SBC-675B

Environment Test Report

Release Date : DEC/28/2000

Issue Stamp

QA Manager

QE Manager

Test Engineer

Environment

Model Name : SBC-675 Rev.B1.0

Test Date : 12-22-2000

Test Site : AAEON QE Dept.

Performed by : Milo Wang

Test Standard :

Select	NO.	Description
√	IEC 68-2-30	Test DB:Damp Heat Test
√	IEC 68-2-61	Test Z/ABD : Climatic Sequence Test

Testing Item :

Temperature & Humidity Cycle
Temperature & Humidity Power On/Off Test

Additional Test Peripheral :

Configuration	Model
Test Software	QAPlus/FE V5.5
Test Fixture	Power on/off(110V) Fixture

Testing Equipment :

Programmable Temperature & Humidity Chamber
Model : Ths-D4L+-100
S/N : 1241
Date of Calibration : 07-10-1998

Sample Configuration & Quantity Under Test :

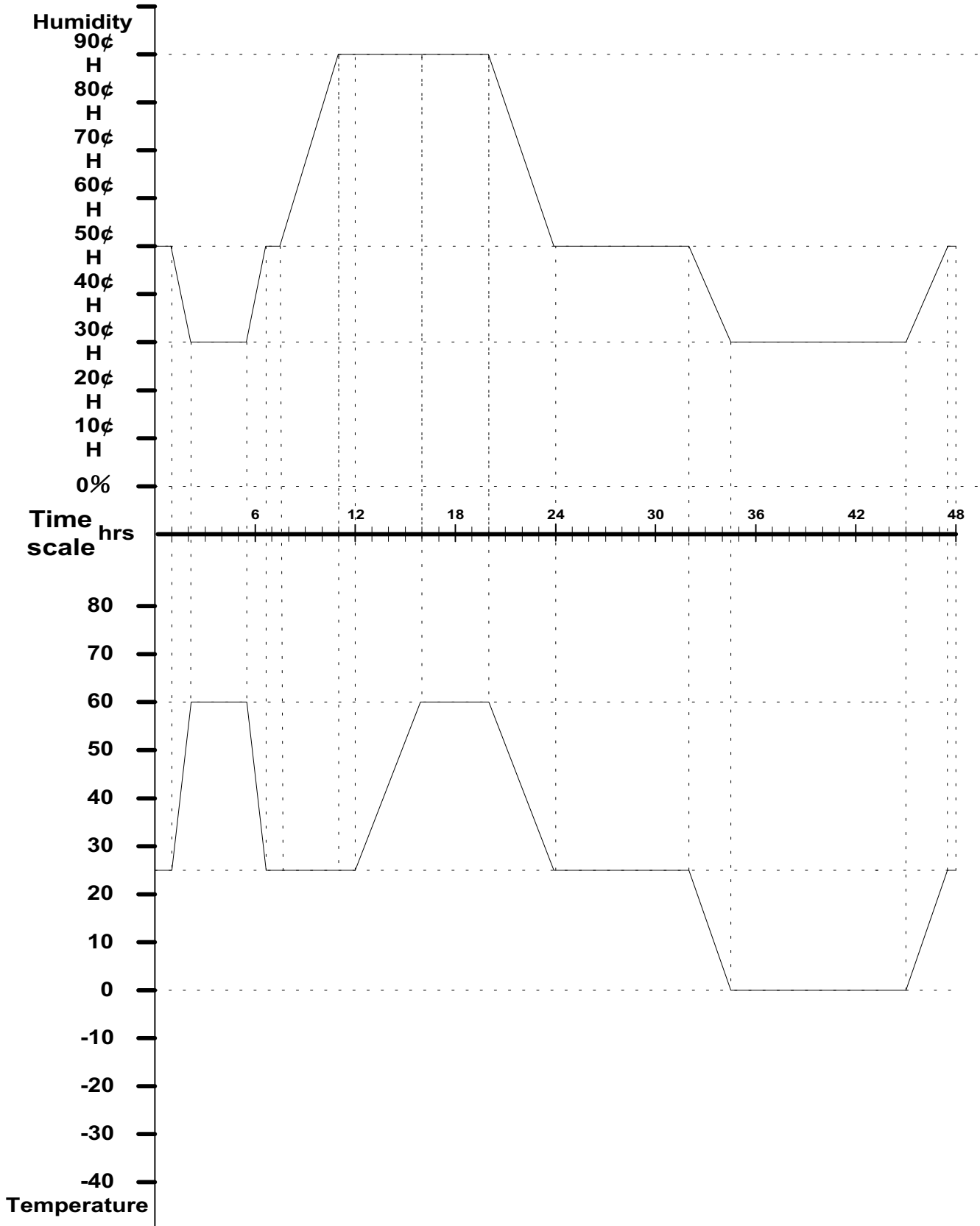
Use SBC-675 Rev.B1.0 Full-size CPU Card
1.CPU : Intel Celeron-633 MHz
2.DRAM : 64MB(NEC D4564163G5-A10B)
3.Chipset : Intel FW82443BX/ FW82371EB
4.VGA Chipset : C&T B69000
5.I/O Chipset :Winbond W83977TF

Test Result :

Standard	Description	Result
IEC 68-2-30	Temperature & Humidity Power On/Off Test	Pass
IEC 68-2-61	Temperature & Humidity Cycle Test(Run QAPlus/FE V5.5)	Pass

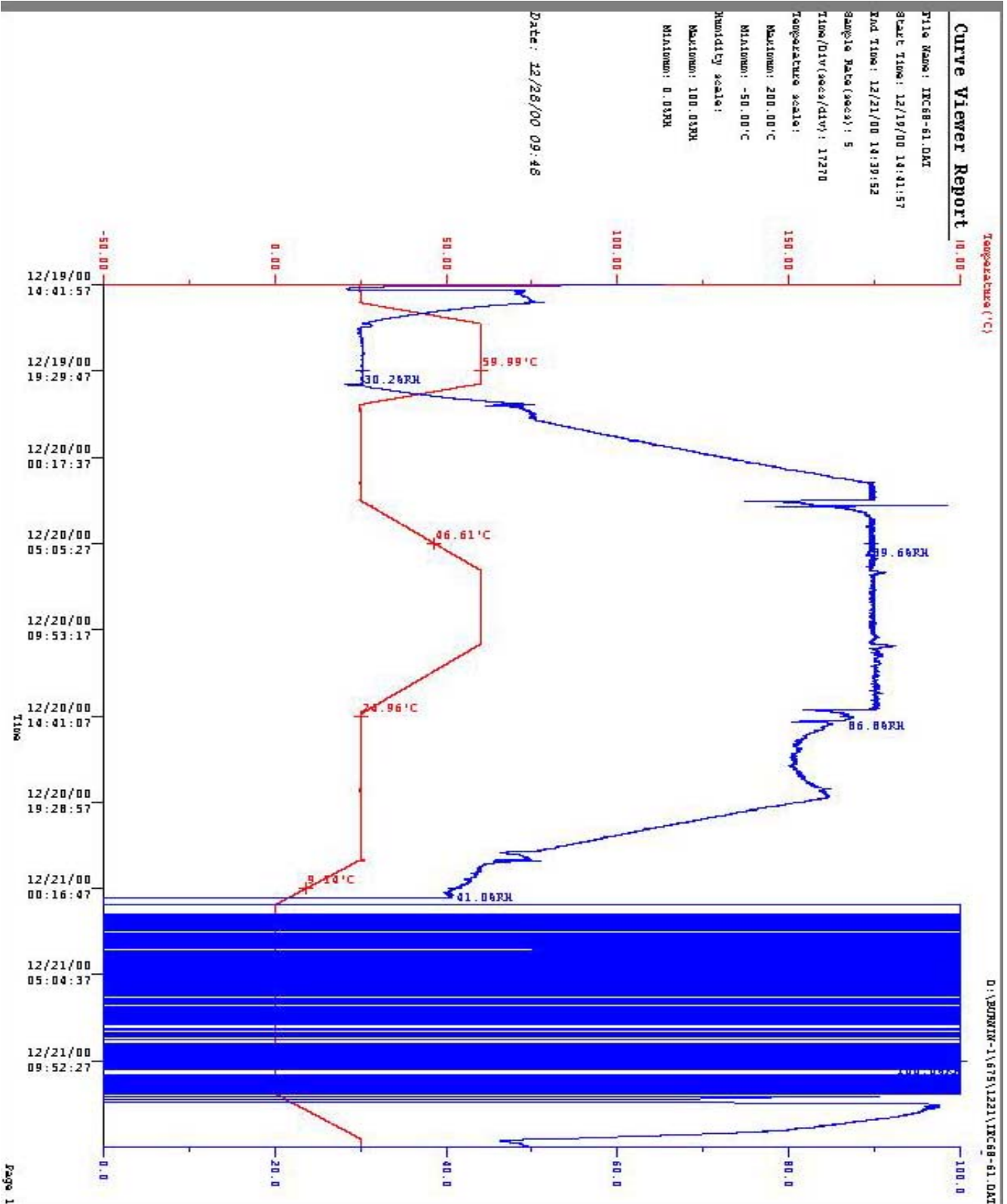
Environment

Temperature & Humidity Cycle Test(Run QAPlus/FE V5.5)



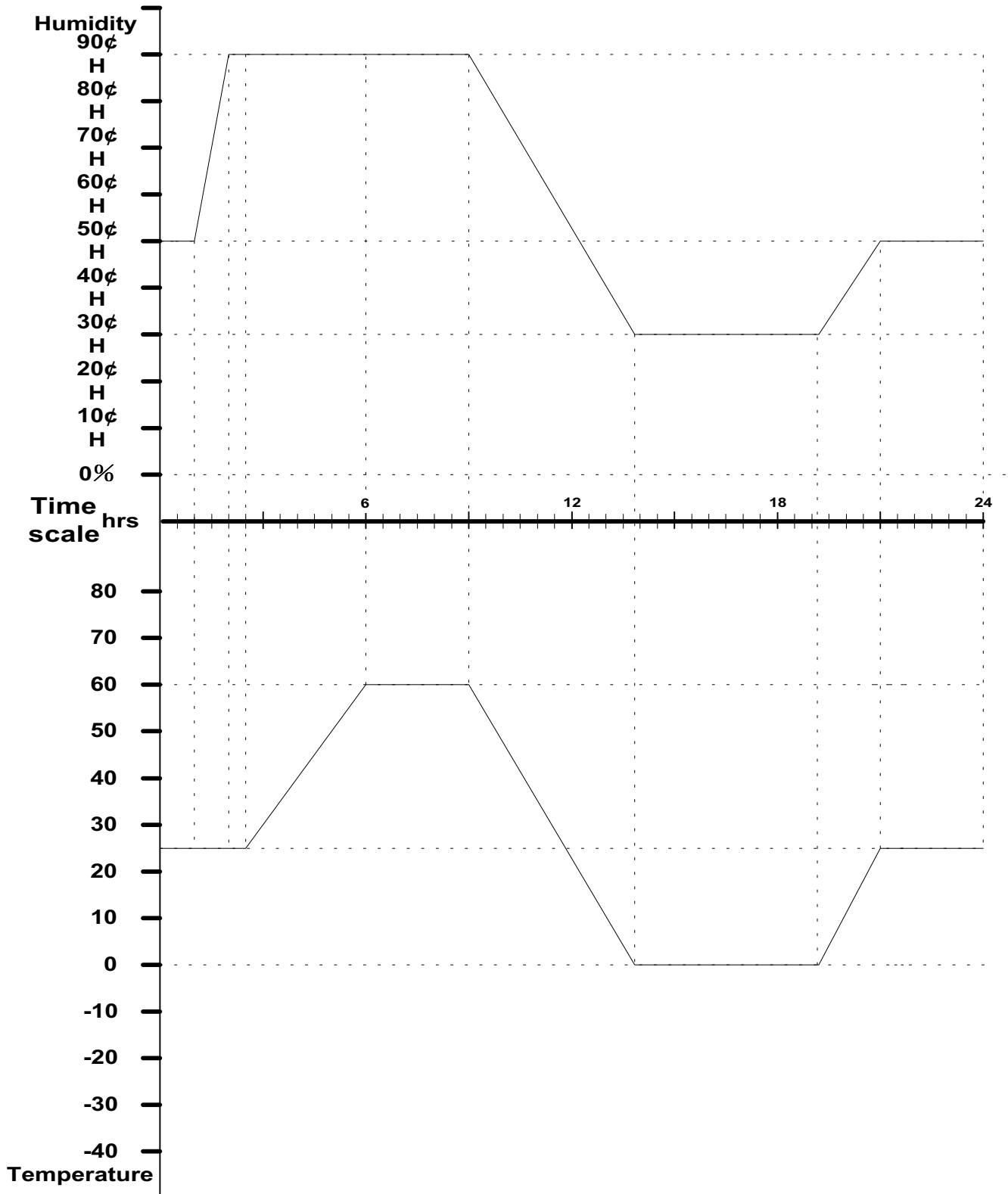
Environment

Temperature & Humidity Cycle Test(Run QAPlus/FE V5.5)



Environment

Temperature & Humidity Power On/Off Test



Environment

Temperature & Humidity Power On/Off Test

