



Industrial Computing Platform Partner

XTX-945

Temperature/Humidity Test Report

Report NO: 07E020035

Issued by: Rex Chang / 10/26/2007
Test Engineer Date

Reviewed by: Wenyuan Yang / 10/26/2007
Manager Date

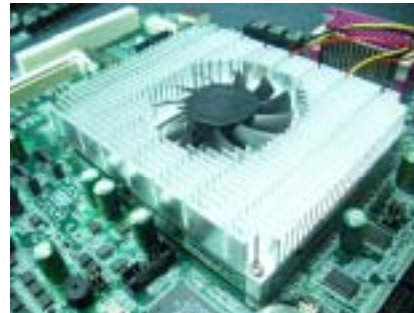
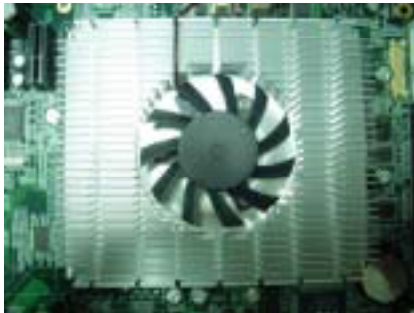
Test item list

1. <i>Test item list</i> -----	2
2. <i>Temp./humidity power on/off test</i> -----	3
3. <i>Temperature variation operation test</i> -----	4
4. <i>Cold start and hot start test</i> -----	5

Test Product: XTX-945 A0.3

Sample Configuration & Quantity Under Test:

1. CPU: Intel Celeron M (Yonah) / 1.86GHz (Bios Ver.0.8)
2. Chipset: Intel 945GM + ICH7-M
3. VGA: Intel 945GM
4. Test Software: Windows XP / Run PassMark Burn In Test Pro 4.0
5. ETX Evaluation Board: ECB-910A A0.2
6. Cooler:



Sample 1: (AT Power)

1. Memory: Transcend 2GB / 7DE12 D9HNL (DDR-667)
2. DOM: PQI 32MB
3. HDD: Seagate ST98823AS 2.5" SATA HDD 80GB
4. AT Power Supply: Zippy SP2-4300F

Sample 2: (ATX Power)

5. Memory: Kingston KVR667D2S5 / 2GB / 7KE12 D9HNL (DDR-667)
6. DOM: PQI 32MB
1. HDD: Seagate 2F040L0 3.5" IDE HDD 40GB
2. ATX Power Supply: Seventeam ST-350EAG-05G

Temp./humidity power on/off test

Test Date: 10-22~23-2007

Test Site: AAEON QA Internal Lab.

Test Standard: Reference IEC 68-2-30 Testing procedures
Test Db: Damp Heat Test

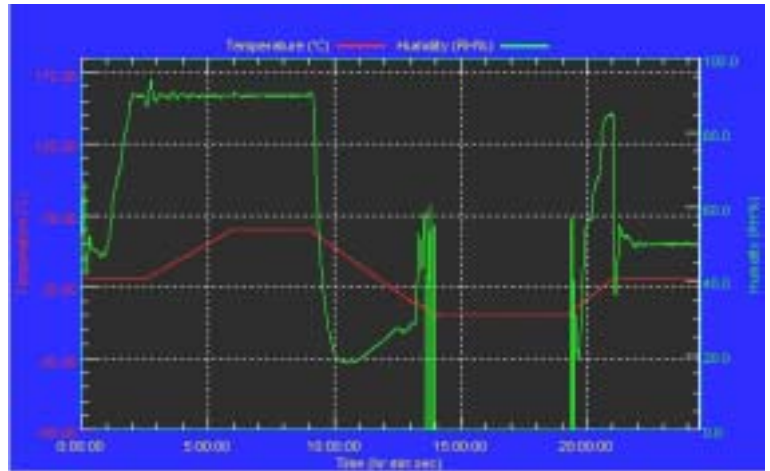
Test Equipment:
Programmable Temperature & Humidity Chamber
K.SON. INS. TECH. CORP.
Model: THS-D4H+-100
Date of Calibration: 05/16/07
Serial Number: 1241

Temperature & Humidity Power On/Off Test:

Testing Specification:

Step	Temperature ()	Humidity (%RH)	Duration (HH:MM)
1	25	50	00:30
2	25	50	00:30
3	25	90	01:00
4	25	90	00:30
5	60	90	03:30
6	60	90	03:00
7	0	0	04:50
8	0	0	05:23
9	25	50	01:47
10	25	50	03:00

Test Curve:



Test Result:

No problem was found during the Temperature & Humidity Power On/Off Test..

Temperature variation operation test

Test Date: 10-23~24-2007

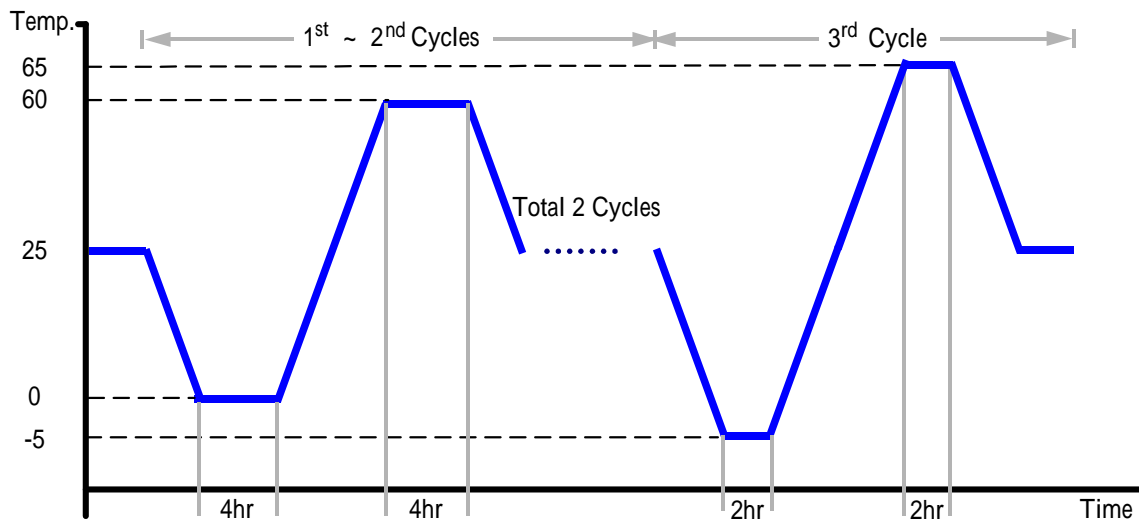
Test Site: AAEON QA Internal Lab.

Test Standard: Reference IEC 68-2-14 Testing procedures
Test N: Change of temperature Test

Test Equipment:
Programmable Temperature & Humidity Chamber
K.SON. INS. TECH. CORP.
Model: THS-D4H+-100
Date of Calibration: 05/16/07
Serial Number: 1241

Temperature & Humidity Cycle Test:

1. Test Low Temperature: 0 (1~2 cycles)
-5 (3rd cycle)
2. Test High Temperature: 60 (1~3 cycles)
65 (3rd cycle)
3. Test dwell time: 4Hrs (1~2 cycles)
2Hrs (3rd cycle)
4. Temperature slope: 2 /min
5. Test cycle: 3 cycles
6. Test Environment Curve:



Test Result:

No problem was found during the Temperature & Humidity Cycle Test.

Cold start and hot start test

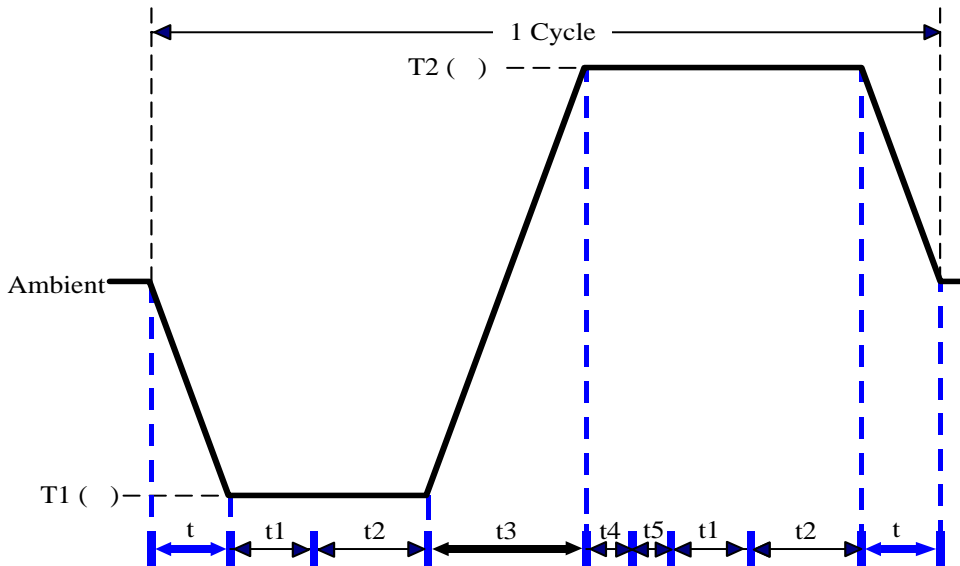
Test Date: 10-25~26-2007

Test Site: AAEON QA Internal Lab.

Test Standard: Reference IEC 68-2-14 Testing procedures
Test N: Change of temperature Test

Test Equipment:
Programmable Temperature & Humidity Chamber
K.SON. INS. TECH. CORP.
Model: THS-D4H+-100
Date of Calibration: 05/16/07
Serial Number: 1241

Test Condition:



Parameters	Description
T1	-5
T2	65
t1	1 hrs
t2	2 hrs
t4, t5	30 min
t, t3	2 /min
n (Cycle)	1

t,t3 = temprature slope
t, t1: Power Off
t2: Power on/off test 10 times (on 2 min / off 5min)
t3,t4: Run PassMark Burn In Test
t5: Win XP Software restart test 2 times
Test Software: Windows XP

Test Result:

- a. No problem was found during the cold start test.
- b. No problem was found during the hot start test.