

# VPC-3300S

With 2.5" SATA SSD

## Environment Test Report

Report NO: 15I020023



Summary	<p><input checked="" type="checkbox"/> <b>Pass</b></p> <p><input type="checkbox"/> <b>Fail</b></p> <p>Note : There is/are ____ defect(s) not list in the report, please check it in the DTS Website.</p> <p><input type="checkbox"/> <b>Pass with Deviation</b></p> <p><b>Comment:</b> _____</p>
---------	--

Issue date

2015-12-25

QE Manager

KJ Wang

Test Engineer

Rex Chang

# Test item list

1.	<i>Test item list</i> -----	2
2.	<i>Configuration of EUT</i> -----	3
3.	<i>Temp./humidity power on/off test</i> -----	4
4.	<i>Cold start and hot start test</i> -----	5
5.	<i>Low temperature operation test</i> -----	6
6.	<i>Low temperature storage test</i> -----	7
7.	<i>High temp./humidity operation test</i> -----	8
8.	<i>High temperature storage test</i> -----	9
9.	<i>Humidity test</i> -----	10
10.	<i>Variation temperature operation test</i> -----	11

## Testing Result

Num	Test item list	Result	Remark
1	Temp./humidity power on/off test	Pass	
2	Cold start and hot start test	Pass	
3	Low temperature operation test	Pass	
4	Low temperature storage test	Pass	
5	High temperature operation test	Pass	
6	High temperature storage test	Pass	
7	Humidity test	Pass	
8	Variation temperature operation test	Pass	

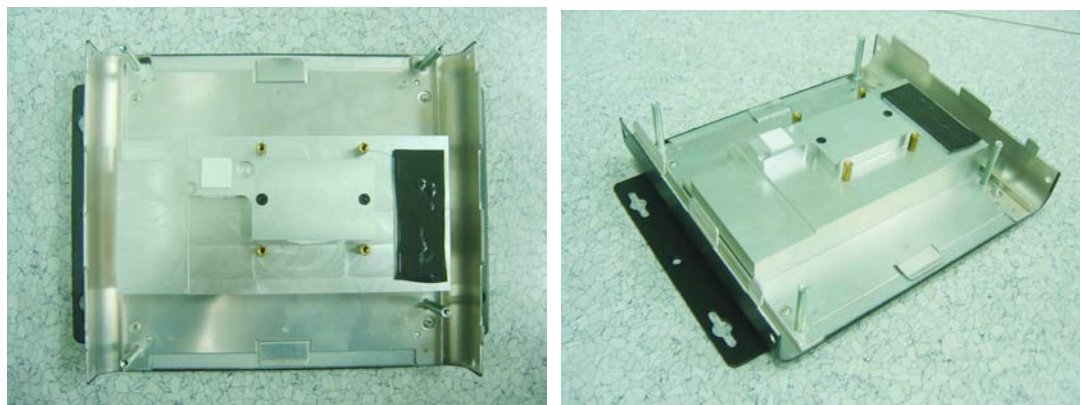
# Configuration of EUT

## Sample Define:

Sample No.	S/N	VPC-3300S
Sample 1		15390764
Sample 2		15390765
Sample 3		15390767
Sample 4		15390768

Num	Item	Spec
1.	<b>Main Board:</b>	VPC-3300 A0.1
	1.BIOS	VPC-3300 R0.2 (VP38AM02) (10/02/2015) x64
	2.CPU	Intel® Atom™ Processor J1900 / 1.99GHz
	3.Memory	Innodisk 8GB / DDR3L 1600 / ProMOS V73CBG04808RAJJ11I
2.	<b>Wide Temp. HDD</b>	Transcend 32G / TS32GSSD370I-AA
3.	<b>Test Software</b>	Windows 7 / Run Burn In Test 7.0 Pro
4.	<b>USB Keyboard</b>	KINYO KBX66
5.	<b>USB Mouse</b>	Microsoft Basic Optical Mouse v2.0
6.	<b>Adapter</b>	FSP DC.19V.32A.120W. 3PIN / FSP120-ABAN2.

## Heat Sink



## Test Condition:

Item	Testing Method	BurnIn configuration	Sample volume
<b>CPU</b>	PassMark BurnIn Test 7.0 Pro	Loading 100%	4 set
<b>2D Graphic</b>	PassMark BurnIn Test 7.0 Pro	Loading 100%	4 set
<b>3D Graphic</b>	PassMark BurnIn Test 7.0 Pro	Loading 100%	4 set
<b>Memory</b>	PassMark BurnIn Test 7.0 Pro	Loading 100%	4 set
<b>Disk</b>	PassMark BurnIn Test 7.0 Pro	Loading 100%	4 set
<b>LAN</b>	PassMark BurnIn Test 7.0 Pro internal loop back	Loading 100%	4 set
<b>Audio</b>	PassMark BurnIn Test 7.0 Pro Sound test	Loading 100%	4 set
<b>USB</b>	USB Keyboard and Mouse	-	4 set

# Power On/Off Test

**Test Date:** 12-08 ~ 09-2015

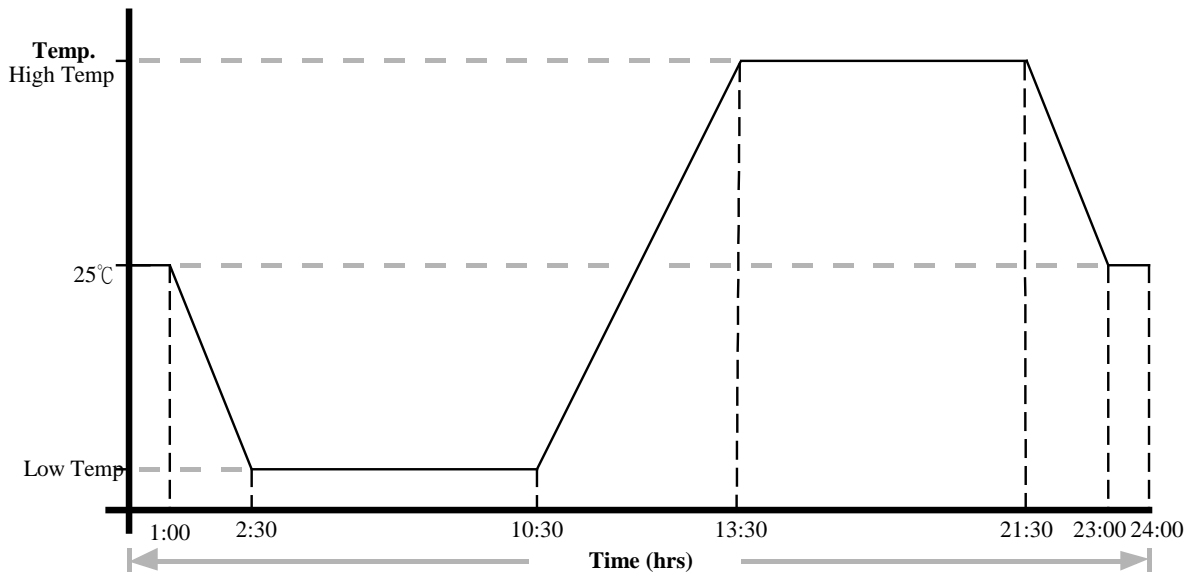
**Test Site:** AAEON QE Dept.

**Test Standard:** Reference IEC 68-2-14 Testing procedures  
Test N: Change of temperature Test

**Test Equipment:**  
Programmable Temperature & Humidity Chamber (TERCHY INS. TECH. CORP.)  
Model: THS-D7TS-100+LN2  
Date of Calibration: 04/23/15  
Serial Number: A0445

**Test Condition:**

1. Test Low Temperature: -20°C
2. Test High Temperature: 70°C
3. Test Times: 24 hrs / 1 cycle
4. Test Cycle: 1 cycle
5. Power On/Off Time: 35sec / 5sec
6. Test Software: DOS Mode / Run Run Boot Up Record Program ver 1.41
7. Test Environment Curve:



**Sample Quantity Under Test:**  
Quantity: 4

**Test Result:**

Sample No.	Actual	Successful	Failure rate	On time	Off Time	Test Result	Note
Sample 1	1826/times	1826/times	0.0%	35 min	5 min	Pass	
Sample 2	1823/times	1823/times	0.0%	35 min	5 min	Pass	-
Sample 3	1830/times	1830/times	0.0%	35 min	5 min	Pass	-
Sample 4	1829/times	1828/times	0.0%	35min	5 min	Fail	Note3

**Note:** 1.Failure rate need to 0%.  
2. 3 of 4 set need pass testing.  
3. Power on/off test fail 1time at -20°C.

# Cold start and hot start test

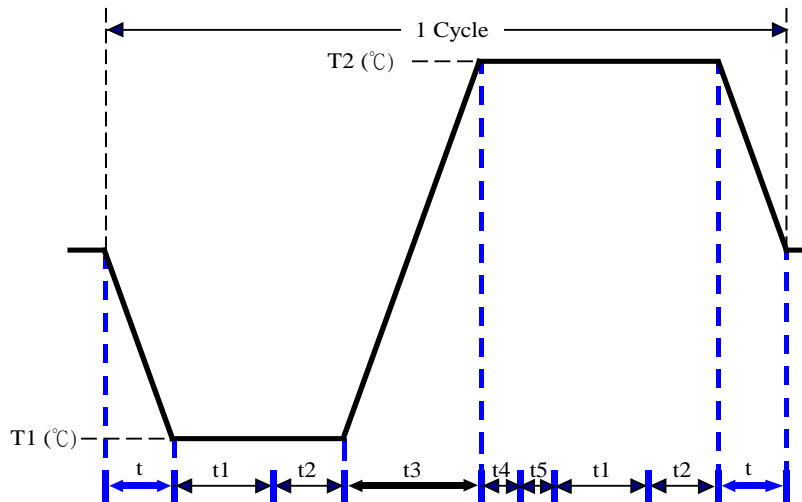
**Test Date:** 12-09 ~ 10-2015

**Test Site:** AAEON QE Dept.

**Test Standard:** Reference IEC 68-2-14 Testing procedures  
Test N: Change of temperature Test

**Test Equipment:**  
Programmable Temperature & Humidity Chamber (K.SON. INS. TECH. CORP.)  
Model: THS-D7TS-100+LN2  
Date of Calibration: 04/23/15  
Serial Number: A0445

**Test Condition:**



Parameters	Description
T1	-25°C
T2	75°C
t1	2 hrs
t2	1.5 hrs
t4, t5	30 min
t, t3	2°C/min
n (Cycle)	1

t, t3 = temprature slope  
t, t1: Power Off  
t2: Power on/off test 10 times (on 2 min / off 5min)  
t3, t4: Run PassMark Burn In Test  
t5: Software restart test 2 times  
Test Software: Windows 7

**Sample Quantity Under Test:**

Quantity: 4

**Test Result:**

Sample No.	Cold Start Test	Hot Start Test	Test Result	Note
Sample 1	Pass	Pass	Pass	
Sample 2	Pass	Pass	Pass	
Sample 3	Pass	Pass	Pass	
Sample 4	Pass	Pass	Pass	

**Note:** 3 of 4 set need pass testing.

# Low temperature operation test

**Test Date:** 12-10 ~ 11-2015

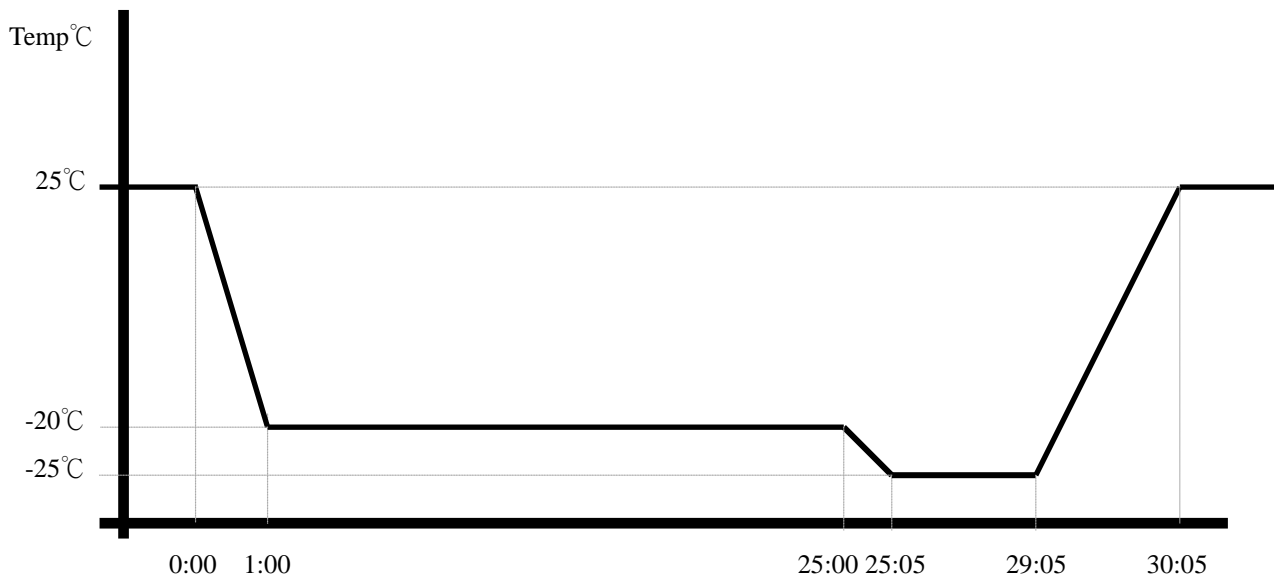
**Test Site:** AAEON QE Dept.

**Test Standard:** Reference IEC 68-2-1 Testing procedures  
Test Ad: Cold Test

**Test Equipment:**  
Programmable Temperature & Humidity Chamber (K.SON. INS. TECH. CORP.)  
Model: THS-D7TS-100+LN2  
Date of Calibration: 04/23/15  
Serial Number: A0445

**Test Condition:**

1. Test Temperature: -20°C, -25°C
2. Test Times: -20°C/24Hrs; -25°C/4Hrs
3. Test Software: Windows 7 / Run PassMark Burn In Test 7.0 Pro
4. Test Environment Curve:



**Sample Quantity Under Test:**

Quantity: 4

**Test Result:**

Sample No.	Test Result	Note
Sample 1	Pass	
Sample 2	Pass	
Sample 3	Pass	
Sample 4	Pass	

Note: 3 of 4 set need pass testing.

# Low temperature storage test

**Test Date:** 12-11 ~ 14-2015

**Test Site:** AAEON QE Dept.

**Test Standard:** Reference IEC 68-2-1 Testing procedures  
Test Ad: Cold Test

**Test Equipment:**  
Programmable Temperature & Humidity Chamber (K.SON. INS. TECH. CORP.)  
Model: THS-D7TS-100+LN2  
Date of Calibration: 04/23/15  
Serial Number: A0445

**Test Condition:**

1. Test Temperature:  $-40^{\circ}\text{C}$
2. Test Times:  $-40^{\circ}\text{C}$  / 96Hrs
3. Test Environment Curve:



**Sample Quantity Under Test:**  
Quantity: 4

**Test Result:**

Sample No.	Test Result	Note
Sample 1	Pass	
Sample 2	Pass	
Sample 3	Pass	
Sample 4	Pass	

**Note:** 3 of 4 set need pass testing.

# High temperature operation test

**Test Date:** 12-15 ~ 16-2015

**Test Site:** AAEON QE Dept.

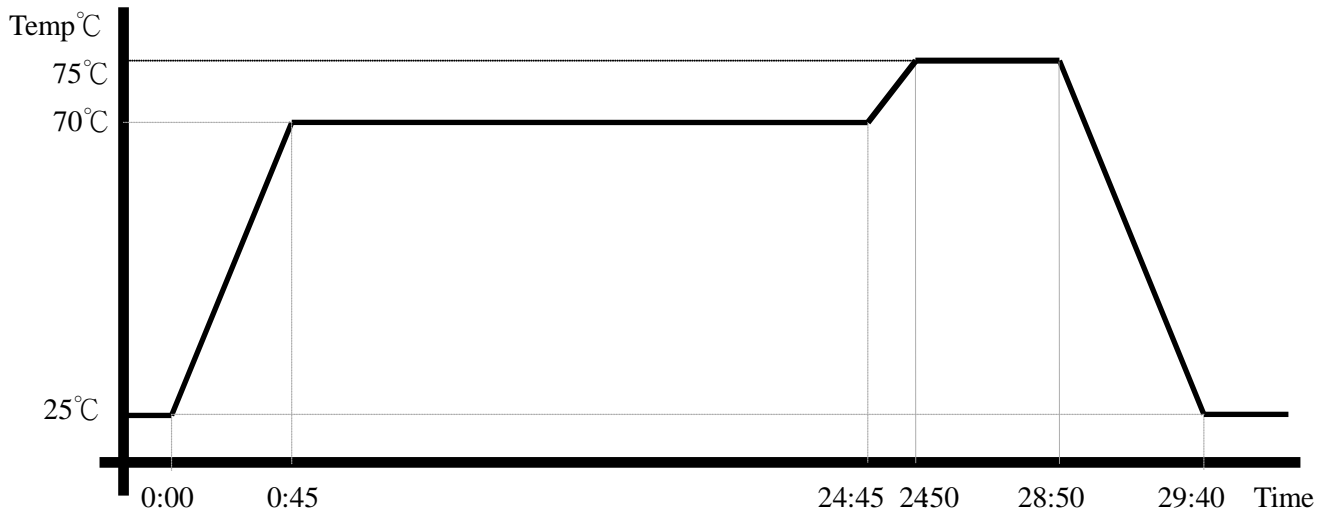
**Test Standard:** Reference IEC 68-2-2 Testing procedures  
Test Bd: Dry Heat Test

**Test Equipment:**

Programmable Temperature & Humidity Chamber (K.SON. INS. TECH. CORP.)  
Model: THS-D7TS-100+LN2  
Date of Calibration: 04/23/15  
Serial Number: A0445

**Test Condition:**

1. Test Temperature: 70°C, 75°C
2. Test Times: 70°C/24Hrs; 75°C/4Hrs
3. Test Software: Windows 7 / Run PassMark Burn In Test 7.0 Pro
4. Test Environment Curve:



**Sample Configuration & Quantity Under Test:**

Quantity: 4

**Test Result:**

Sample No.	Test Result	Note
Sample 1	Pass	
Sample 2	Pass	
Sample 3	Pass	
Sample 4	Pass	

**Note:** 3 of 4 set need pass testing.



# High temperature storage test

**Test Date:** 12-16 ~ 18-2015

**Test Site:** AAEON QE Dept.

**Test Standard:** Reference IEC 68-2-2 Testing procedures  
Test Bd: Dry Heat Test

**Test Equipment:**

Programmable Temperature & Humidity Chamber (K.SON. INS. TECH. CORP.)  
Model: THS-D7TS-100+LN2  
Date of Calibration: 04/23/15  
Serial Number: A0445

**Test Condition:**

1. Test Temperature: 85°C
2. Test Times: 96Hrs
3. Test Environment Curve:



**Sample Configuration & Quantity Under Test:**

Quantity: 4

**Test Result:**

Sample No.	Test Result	Note
Sample 1	Pass	
Sample 2	Pass	
Sample 3	Pass	
Sample 4	Pass	

**Note:** 3 of 4 set need pass testing.

# Humidity Test

**Test Date:** 12-18~21-2015

**Test Site:** AAEON QE Dept.

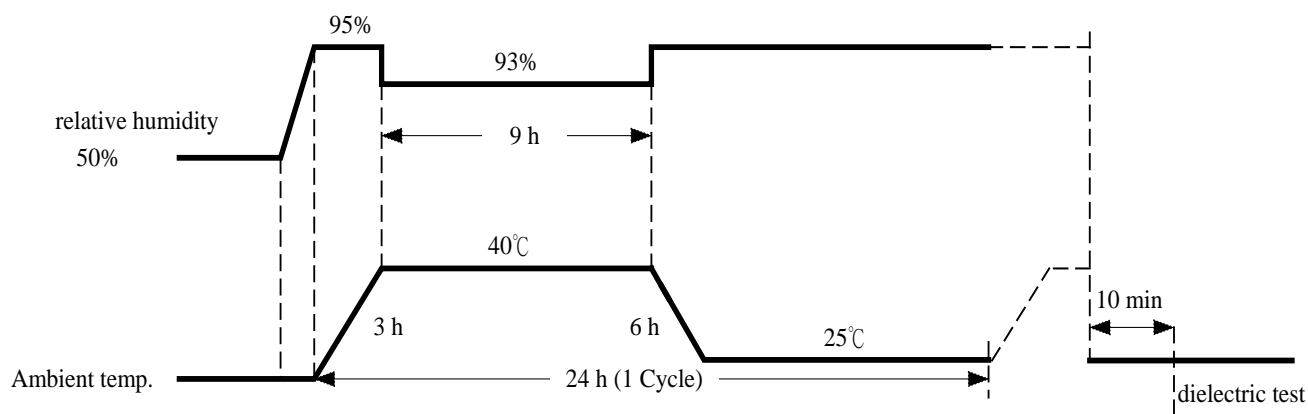
**Test Standard:** Reference IEC 68-2-30 Testing procedures  
Test Db: Damp Heat Test (Non-operation)

**Test Equipment:**

Programmable Temperature & Humidity Chamber (K.SON. INS. TECH. CORP.)  
Model: THS-D7TS-100+LN2  
Date of Calibration: 04/23/15  
Serial Number: A0445

**Testing Item:**

1. Test Temperature: 25°C / 40°C
2. Test Humidity: 93~95%RH
3. Test Cycle: 2 Cycle
4. Test Environment Curve:



**Sample Configuration & Quantity Under Test:**

Quantity: 4

**Test Result:**

Sample No.	Test Result	Note
Sample 1	Pass	
Sample 2	Pass	
Sample 3	Pass	
Sample 4	Pass	

**Note:** 3 of 4 set need pass testing.

# Variation Temperature Operation test

**Test Date:** 12-21 ~ 24-2015

**Test Site:** AAEON QE Dept.

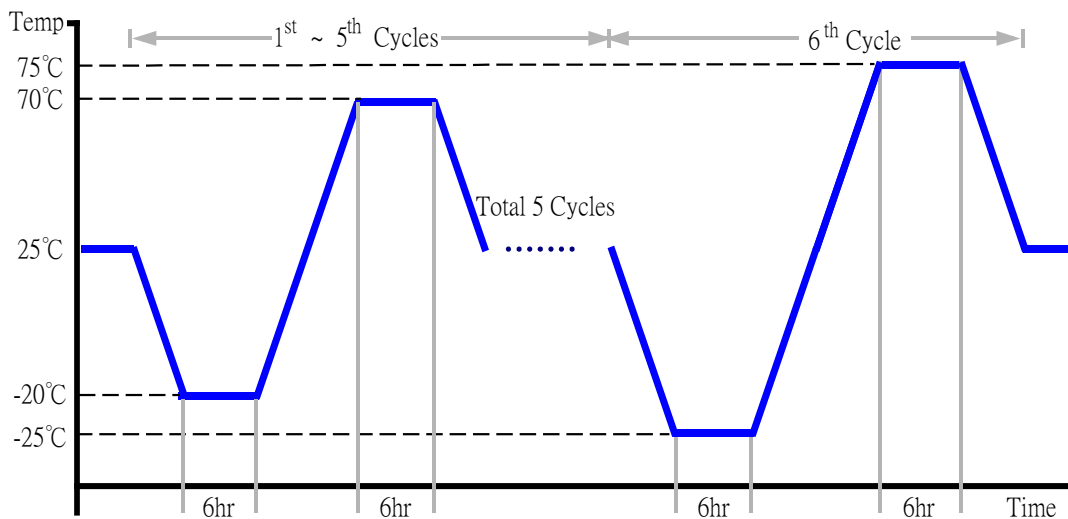
**Test Standard:** Reference IEC 68-2-14 Testing procedures  
Test N: Change of temperature Test

**Test Equipment:**

Programmable Temperature & Humidity Chamber (K.SON. INS. TECH. CORP.)  
Model: THS-D7TS-100+LN2  
Date of Calibration: 04/23/15  
Serial Number: A0445

**Test Condition:**

1. Test Low Temperature: -20°C (1~5 cycles)  
-25°C (6<sup>th</sup> cycle)
2. Test High Temperature: 70°C (1~5 cycles)  
75°C (6<sup>th</sup> cycle)
3. Test dwell time: 6Hrs
4. Temperature slope: 15°C/min
5. Test cycle: 6 cycles
6. Test Environment Curve:



**Sample Quantity Under Test:**  
Quantity: 6

**Test Result:**

Sample No.	Test Result	Note
Sample 1	Pass	
Sample 2	Pass	
Sample 3	Pass	
Sample 4	Pass	

**Note:** 3 of 4 set need pass testing.