

# **SBC-657 Rev:B0.1 (ATX Power)**

VIA Eden C3 EPGA mobile CPU 667MHz

## **Temperature cycle Test Report**

Report NO : 03E020069

Issued by:

/

11/28/2003

*Rex Chang*  
QE Engineer

Date

Reviewed by:

/

11/28/2003

*Wenquan Yang*  
Manager

Date

SBC-657 Rev :B0.1 (ATX Power)

Test Date: 11-20~26-2003

Test Product: SBC-657 667MHz CPU ( PCB Rev:B0.1 BIOS Rev: 1.3)

Test Site: AAEON QA Internal Lab.

Performed By : Rex Chang

**Test Standard :** Reference IEC 68-2-30 Testing procedures  
 Test DB : Damp Heat Test  
 Reference IEC 68-2-61 Testing procedures  
 Test Z/ABD : Climatic Sequence Test

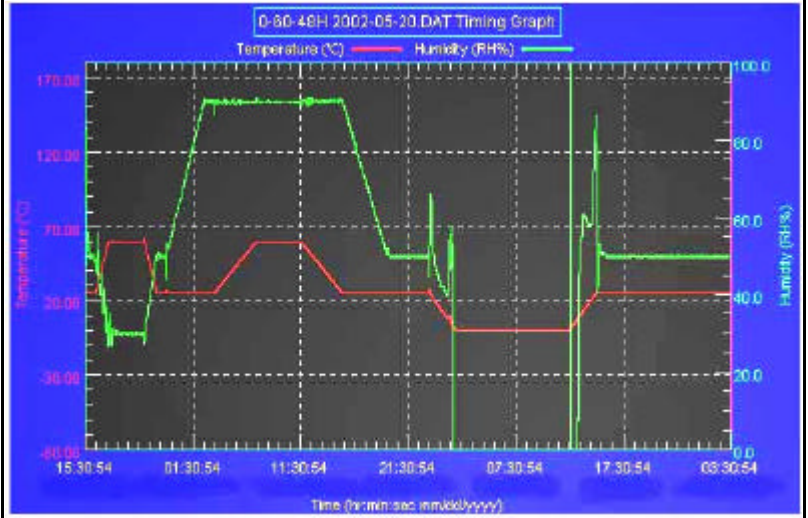
**Test Equipment:** Programmable Temperature & Humidity Chamber  
 K.SON. INS. TECH. CORP.  
 Model : THS-D4H+-100  
 Date of Calibration : 06/03/03  
 Serial Number: 1241

**Temperature & Humidity Cycle Test:**

**Testing Specification**

Step	Temperature ( )	Humidity (%RH)	Duration (HH:MM)
1	25	50	00:30
2	25	50	00:30
3	60	30	01:10
4	60	30	03:20
5	25	50	01:10
6	25	50	00:50
7	25	90	03:30
8	25	90	01:00
9	60	90	03:53
10	60	90	04:07
11	25	90	03:53
12	25	50	04:07
13	25	50	03:30
14	25	50	00:30
15	0	0	02:30
16	0	0	10:30
17	25	50	02:30
18	25	50	00:30

**Test Curve:**

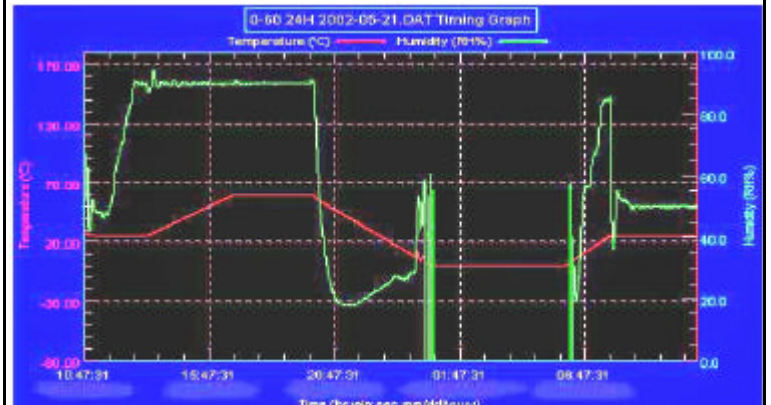


**Temperature & Humidity Power On/Off Test**

**Testing Specification:**

Step	Temperature ( )	Humidity (%RH)	Duration (HH:MM)
1	25	50	00:30
2	25	50	00:30
3	25	90	01:00
4	25	90	00:30
5	60	90	03:30
6	60	90	03:00
7	0	0	04:50
8	0	0	05:23
9	25	50	01:47
10	25	50	03:00

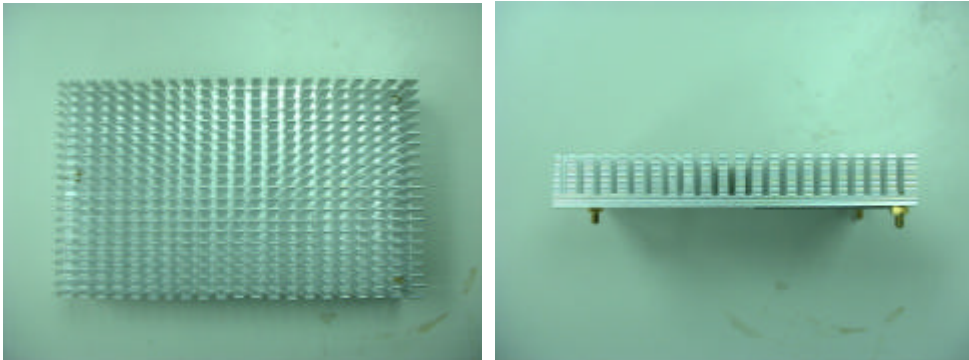
**Test Curve:**



SBC-657 Rev :B0.1 (ATX Power)

Sample Configuration &amp; Quantity Under Test:

1. CPU : VIA Eden C3 EBGA mobile 667 MHz integrated processor (133 FSB)
2. SDRAM : INFINEON HYB39S128800CT-75 128MB SO-DIMM(PC-133)
3. VGA : VT8606 share memory up to 32MB
4. LAN : Realtek RTL8139DL (10/100 Base-T)
5. CFD : SanDisk 64MB
6. Heat Sink : M160657000

**Test Result :****Passed.**

The SBC-657 Half-size CPU Card meets temperature cycle test.

(Power on/off test : **Failed one time at 25 power on/off test.** )

Test Method	Actual	Successful	Failure rate	Note
Power On/Off	887	886	<b>0.1%</b>	Pass