

# PICO-IMX6

Freescale i.MX6 Quad core 1GHz

## Temperature/Humidity Test Report

Report NO: 15E020005

Summary	<p><input checked="" type="checkbox"/> <b>Pass</b></p> <p><input type="checkbox"/> <b>Fail</b></p> <p>Note : There is/are ____ defect(s) not list in the report, please check it in the DTS Website.</p> <p><input type="checkbox"/> <b>Pass with Deviation</b></p> <p><b>Comment:</b> _____</p>
---------	--

Issue date

2015-06-26

Approval

KJ Wang

Test Engineer

Ben Sun

# Test item list

- 
1. *Test item list* ----- 2
  2. *Configuration of EUT* ----- 3
  3. *Temp./humidity power on/off test* ----- 4
  4. *Temperature variate operation test* ----- 5
  5. *Cold start and hot start test* ----- 6

## Testing Result

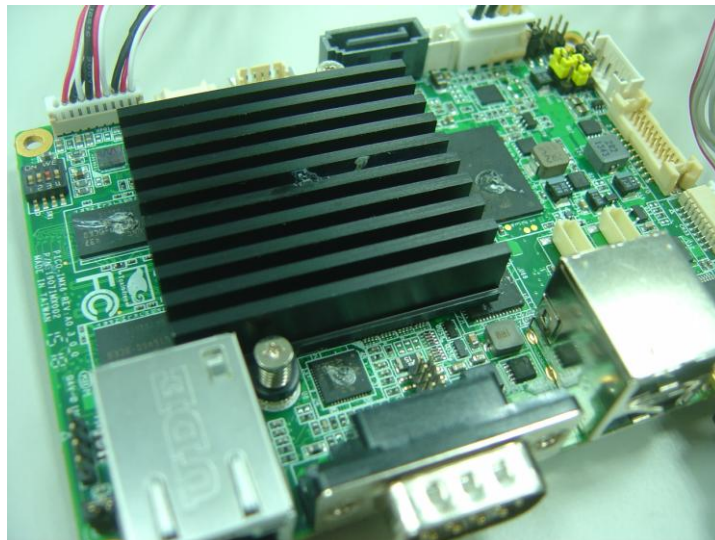
Num	Test item list	Result	Remark
1	Temp./humidity power on/off test	Pass	
2	Temperature variation operation test	Pass	
3	Cold start and hot start test	Pass	

# Configuration of EUT

## Test Product: PICO-IMX6 REV. A0.3

### Sample Configuration & Quantity Under Test:

1. CPU: Freescale i.MX6 Quad core 1GHz MCIMX6Q6AVT10AC
2. BIOS Ver.: Linux Kernel 3.0.35
3. Memory: Onboard DDRIII-SDRAM.128MX16(bit).1600MHZ.SAMSUNG 1GB
4. Storage: Transcend micro SDHC. class 10. 8G
5. Test Software: Ubuntu 11.10
6. AT Power Supply
7. CPU Heatsink:



# Temp./humidity power on/off test

**Test Date:** 06-24 ~ 25-2015

**Test Site:** AAEON QE Dept.

**Test Standard:** Refer to IEC 68-2-30 Testing procedures  
Test Db: Damp Heat Test

**Test Equipment:**

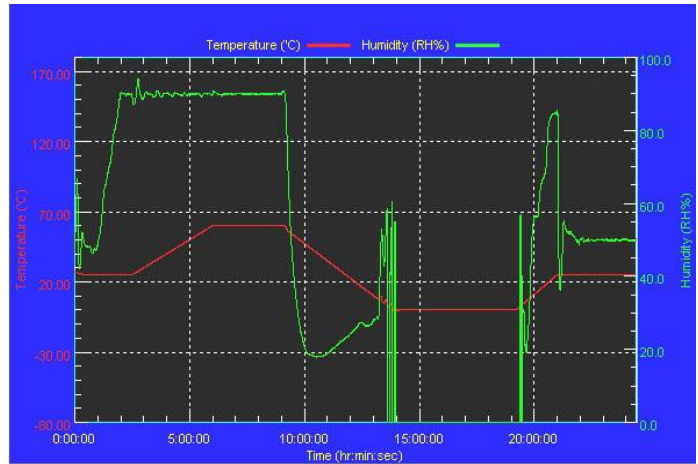
Programmable Temperature & Humidity Chamber (K.SON. INS. TECH. CORP.)  
Model: THS-D7TS-100+LN2  
Date of Calibration: 04/23/15  
Serial Number: A0445

**Temperature & Humidity Power On/Off Test:**

**Testing Specification:**

Step	Temperature (°C)	Humidity (%RH)	Duration (HH:MM)
1	25	50	00:30
2	25	50	00:30
3	25	90	01:00
4	25	90	00:30
5	60	90	03:30
6	60	90	03:00
7	0	0	04:50
8	0	0	05:23
9	25	50	01:47
10	25	50	03:00

**Test Curve:**



**Test Result:**

Test Method	Actual	Successful	Failure rate
Power On/Off	1438/times	1438/times	0 %
Note: Failure rate need to be 0%.			

# Temperature variation operation test

**Test Date:** 06-19 ~ 20-2015

**Test Site:** AAEON QE Dept.

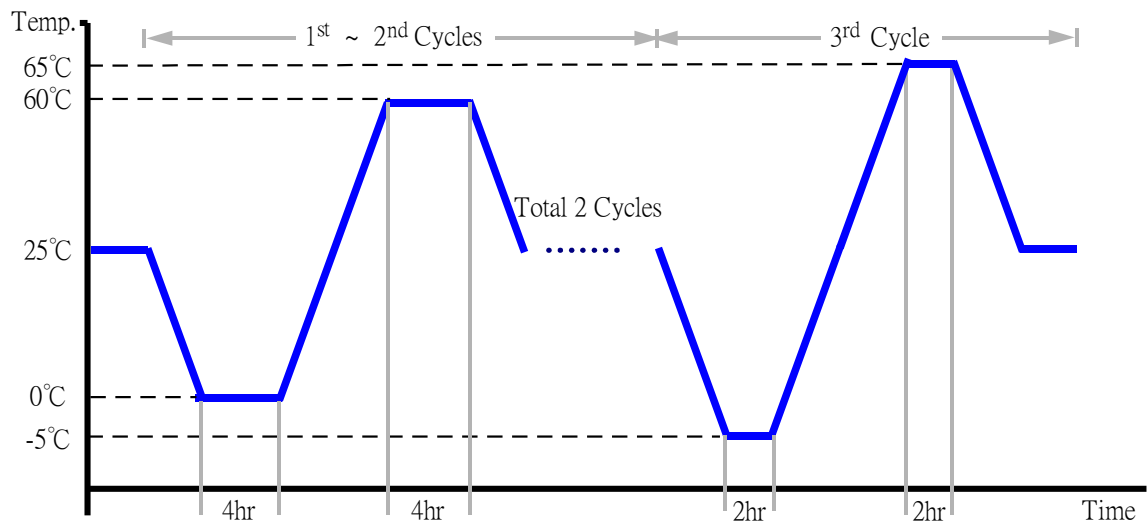
**Test Standard:** Refer to IEC 68-2-14 Testing procedures  
Test N: Change of temperature Test

**Test Equipment:**

Programmable Temperature & Humidity Chamber (K.SON. INS. TECH. CORP.)  
Model: THS-D7TS-100+LN2  
Date of Calibration: 04/23/15  
Serial Number: A0445

**Temperature & Humidity Cycle Test:**

1. Test Low Temperature: 0°C (1~2 cycles)  
-5°C (3<sup>rd</sup> cycle)
2. Test High Temperature: 60°C (1~2 cycles)  
65°C (3<sup>rd</sup> cycle)
3. Test dwell time: 4Hrs (1~2 cycles)  
2Hrs (3<sup>rd</sup> cycle)
4. Temperature slope: 2°C/min
5. Test cycle: 3 cycles
6. Test Environment Curve:



**Test Result:**

No issues were found during the temperature variation operation test.

# Cold start and hot start test

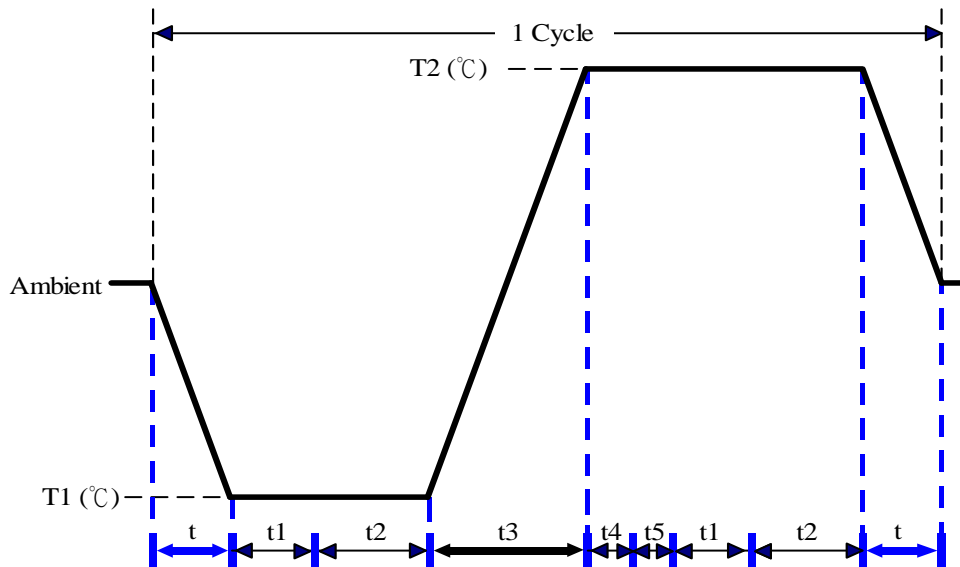
**Test Date:** 06-22-2015

**Test Site:** AAEON QE Dept.

**Test Standard:** Refer to IEC 68-2-14 Testing procedures  
Test N: Change of temperature Test

**Test Equipment:**  
Programmable Temperature & Humidity Chamber (K.SON. INS. TECH. CORP.)  
Model: THS-D7TS-100+LN2  
Date of Calibration: 04/23/15  
Serial Number: A0445

**Test Condition:**



Parameter	Description
T1	-5°C
T2	6.5°C
t1	1 h r s
t2	2 h r s
t4, t5	30 min
t, t3	2°C/min
n (Cycle)	1

t,t3 = temprature slope  
t, t1: Power Off  
t2: Power on/off test 10 times (on 2 min / off 5min)  
t3,t4: Run PassMark Burn In Test  
t5: Windows 7 Software restart test 2 times  
Test Software:Ubuntu 11.10

**Test Result:**

- a. No issues were found during the cold start test.
- b. No issues were found during the hot start test.