

PFM-F620S A0.3

Test Date: 02-22~25-2005

Test Product: PFM-F620S (PCB Rev: A0.3 BIOS Rev: 0.3)

Test Site: AAEON QA Internal Lab.

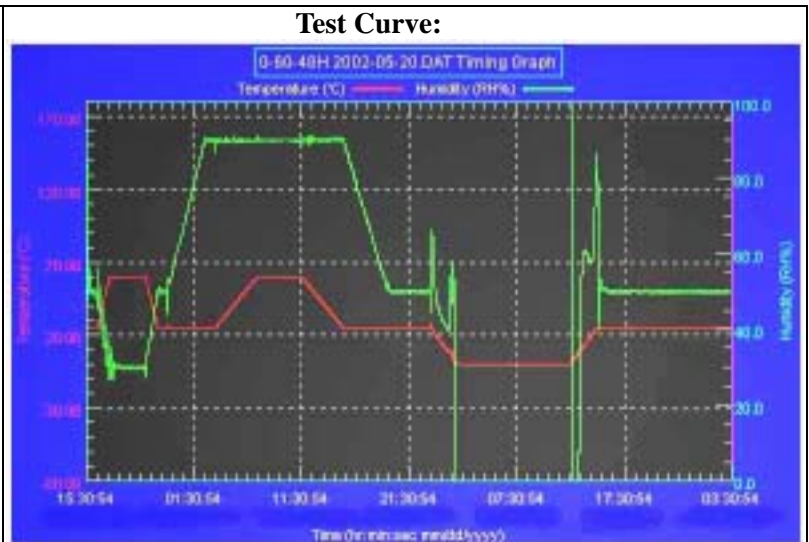
Performed By: Rex Chang

Test Standard: Reference IEC 68-2-30 Testing procedures
 Test DB: Damp Heat Test
 Reference IEC 68-2-61 Testing procedures
 Test Z/ABD: Climatic Sequence Test

Test Equipment:
 Programmable Temperature & Humidity Chamber
 K.SON. INS. TECH. CORP.
 Model: THS-D4H+-100
 Date of Calibration: 05/24/04
 Serial Number: 1241

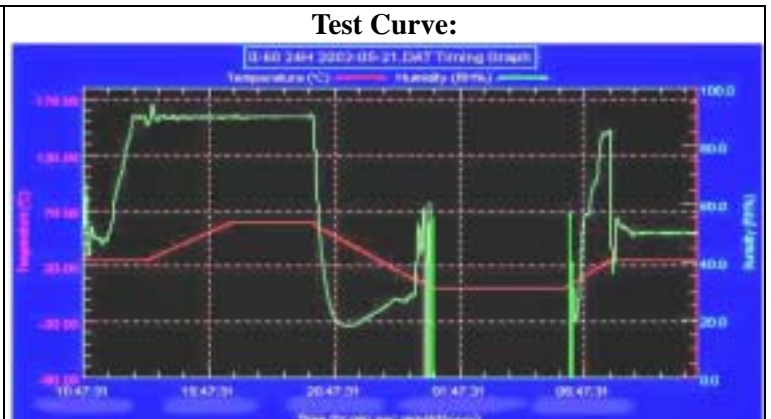
Temperature & Humidity Cycle Test:

Testing Specification			
Step	Temperature ()	Humidity (%RH)	Duration (HH:MM)
1	25	50	00:30
2	25	50	00:30
3	60	30	01:10
4	60	30	03:20
5	25	50	01:10
6	25	50	00:50
7	25	90	03:30
8	25	90	01:00
9	60	90	03:53
10	60	90	04:07
11	25	90	03:53
12	25	50	04:07
13	25	50	03:30
14	25	50	00:30
15	0	0	02:30
16	0	0	10:30
17	25	50	02:30
18	25	50	00:30



Temperature & Humidity Power On/Off Test

Testing Specification:			
Step	Temperature ()	Humidity (%RH)	Duration (HH:MM)
1	25	50	00:30
2	25	50	00:30
3	25	90	01:00
4	25	90	00:30
5	60	90	03:30
6	60	90	03:00
7	0	0	04:50
8	0	0	05:23
9	25	50	01:47
10	25	50	03:00



PFM-F620S A0.3

Sample Configuration & Quantity Under Test:

1. CPU: Onboard Intel ULV Celeron 400MHz./ SL6SE RJ80530
2. Chipset: VIA VT8606 PN133T RJC0AC 0428 DG0136.00
+ VT82C686B 0422CD 13COK698Z
3. SDRAM: 256MB SDRAM KINGMAX KSV684T4A2A-07L (PC-133)
4. VGA: VIA VT8606 (share system memory up to 32MB)
5. HDD: Maxtor Fireball 3 ATA/133 30G
6. CFD: PQI 32MB
7. Power Supply: Seventeam ST-250AF (AT Power)
8. Test Software: Windows 2000 / Run HCT 9.5
9. Heat Sink (P/N):



Test Result:

Passed.