

# **PFM-540I Ver.B**

W1: -20°C~70°C

## **Temp./Humidity Test Report**

Report NO: 08E020040



Issued by:	<b>Rex Chang</b>	/	<b>08/29/2008</b>
	<hr/> Engineer		<hr/> Date
Reviewed by:	<b>Wenyuan Yang</b>	/	<b>08/29/2008</b>
	<hr/> Manager		<hr/> Date

<b>1. Test Item List</b> -----	<b>2</b>
<b>2. Test Configuration</b> -----	<b>3</b>
<b>2. Power On/Off Test</b> -----	<b>4</b>
<b>3. Cold Start and Hot Start Test</b> -----	<b>5</b>
<b>3. Low Temperature Operation Test</b> -----	<b>6</b>
<b>4. High Temp./Humidity Operation Test</b> -----	<b>7</b>
<b>5. Variation Temperature Operation Test</b> -----	<b>8</b>

# Test Configuration

## Sample 1 (S/N: 08190797)

Num	Item	Spec
1.	PC-104 CPU Module:	PFM-540I Rev: B1.0-A (BIOS: B1.01)
	1.CPU	Onboard AMD LX800 / 500MHz
	2. Industrial Memory	Apacer 512MB / ProMOS V58C2512804SAI5I (DDR-400 set to 333MHz)
2.	Industrial CFD	PRETEC 2GB
3.	Power Supply	Zippy SP2-4300F (AT Power)

## Sample 2 (S/N: 08190801)

Num	Item	Spec
1.	PC-104 CPU Module:	PFM-540I Rev: B1.0-A (BIOS: B1.01)
	1.CPU	Onboard AMD LX800 / 500MHz
	2. Industrial Memory	Apacer 512MB / ProMOS V58C2512804SAI5I (DDR-400 set to 333MHz)
2.	Industrial CFD	PRETEC 2GB
3.	Power Supply	Zippy SP2-4300F (AT Power)

## Sample 3 (S/N: 08190802)

Num	Item	Spec
1.	PC-104 CPU Module:	PFM-540I Rev: B1.0-A (BIOS: B1.01)
	1.CPU	Onboard AMD LX800 / 500MHz
	2. Industrial Memory	Apacer 512MB / ProMOS V58C2512804SAI5I (DDR-400 set to 333MHz)
2.	Industrial CFD	PRETEC 2GB
3.	Power Supply	Zippy SP2-4300F (AT Power)

## Sample 4 (S/N: 08190804)

Num	Item	Spec
1.	PC-104 CPU Module:	PFM-540I Rev: B1.0-A (BIOS: B1.01)
	1.CPU	Onboard AMD LX800 / 500MHz
	2. Industrial Memory	Apacer 512MB / ProMOS V58C2512804SAI5I (DDR-400 set to 333MHz)
2.	Industrial CFD	PRETEC 2GB
3.	Power Supply	Zippy SP2-4300F (AT Power)

**Test Date:** 08-25~26-2008

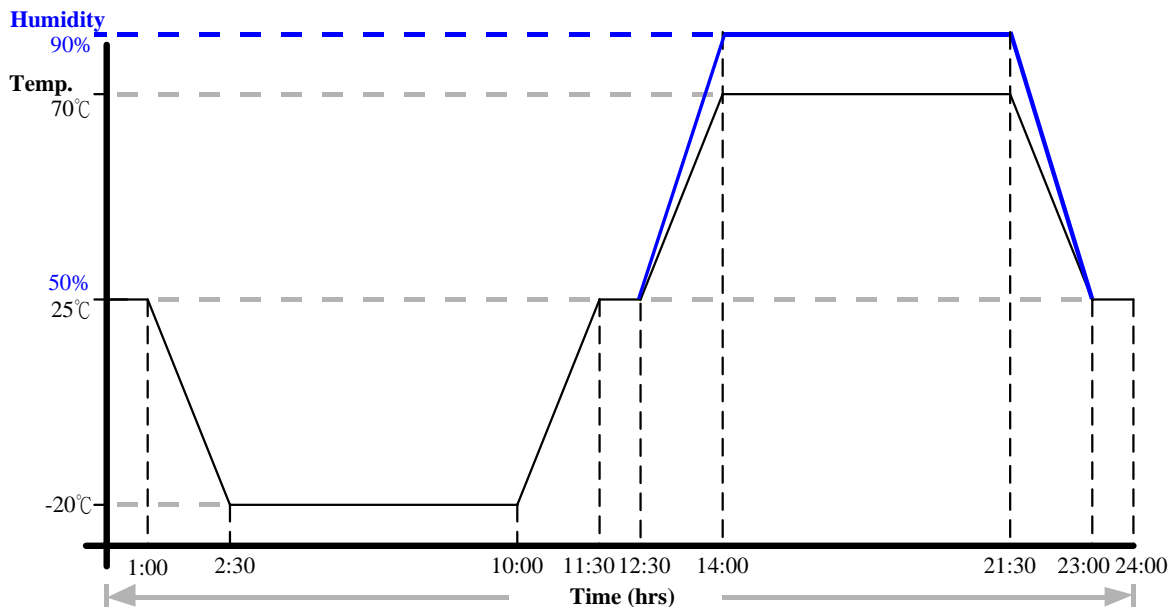
**Test Site:** AAEON QA Internal Lab.

**Test Standard:** Reference IEC 68-2-1 Testing procedures  
Test Ad: Cold Test  
Reference IEC 68-2-3 Testing procedures  
Test Ca: Damp Heat steady state Test

**Test Equipment:**  
Programmable Temperature & Humidity Chamber  
K.SON. INS. TECH. CORP.  
Model: THS-B6T-150+LN2  
Date of Calibration: 04/17/08  
Serial Number: 6488KT

**Test Condition:**

1. Test Low Temperature: -20°C
2. Test High Temp./ Humidity: 70°C/ 90%RH
3. Test Times: 24 hrs
4. Power On/Off Time: 40 sec / 5sec
4. Test Software: DOS Mode / Boot Up Record Program ver 1.41
5. Test Environment Curve:



**Sample Configuration & Quantity Under Test:**

Quantity: 4

**Test Result:**

No problem was found during the temp./humidity power on/off test report.

# Cold start and hot start test

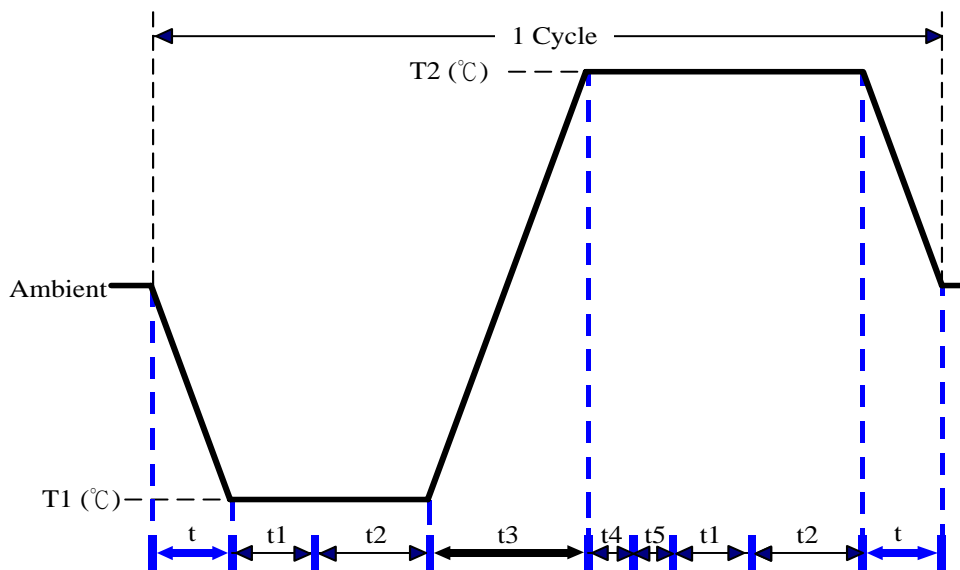
**Test Date:** 08-19~20-2008

**Test Site:** AAEON QA Internal Lab.

**Test Standard:** Reference IEC 68-2-14 Testing procedures  
Test N: Change of temperature Test

**Test Equipment:**  
Programmable Temperature & Humidity Chamber  
K.SON. INS. TECH. CORP.  
Model: THS-B6T-150+LN2  
Date of Calibration: 04/17/08  
Serial Number: 6488KT

**Test Condition:**



Parameters	Description
T1	-25°C
T2	75°C
t1	1 hrs
t2	2 hrs
t4, t5	30 min
t, t3	2°C/min
n (Cycle)	1

t,t3 = temprature slope  
t, t1: Power Off  
t2: Power on/off test 10 times (on 2 min / off 5min)  
t3,t4: Run PassMark Burn In Test  
t5: Win XP Software restart test 2 times  
Test Software:Windows XP

**Test Result:**

- a. No problem was found during the cold start test.
- b. No problem was found during the hot start test.

**Test Date:** 08-22~24-2008

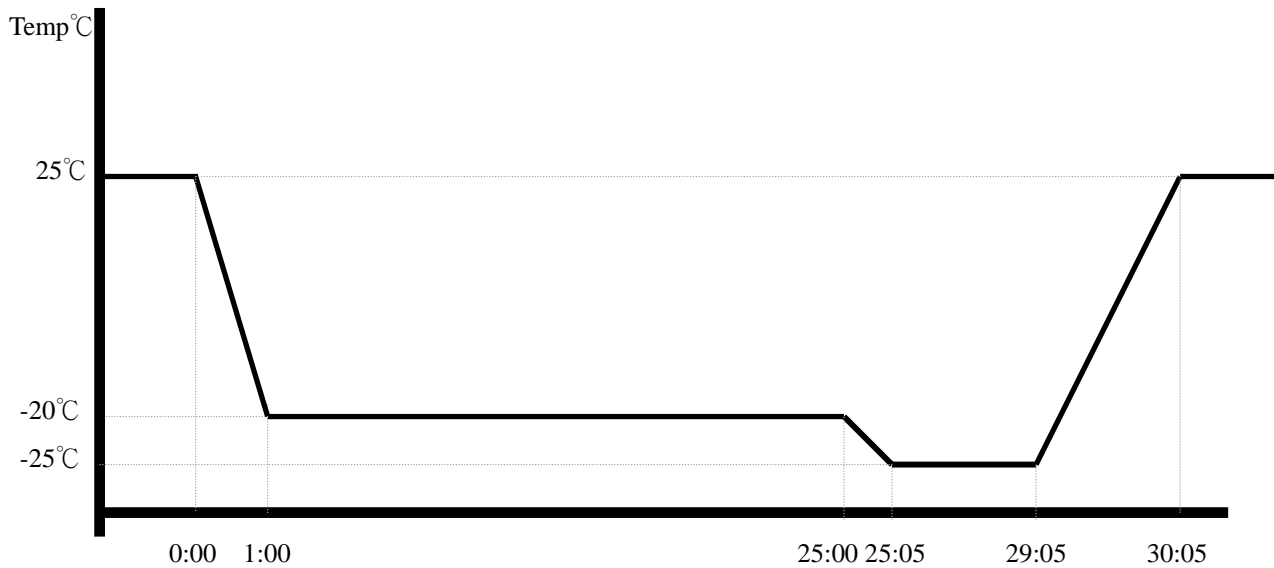
**Test Site:** AAEON QA Internal Lab.

**Test Standard:** Reference IEC 68-2-1 Testing procedures  
Test Ad: Cold Test

**Test Equipment:**  
Programmable Temperature & Humidity Chamber  
K.SON. INS. TECH. CORP.  
Model: THS-B6T-150+LN2  
Date of Calibration: 04/17/08  
Serial Number: 6488KT

**Test Condition:**

1. Test Temperature: -20°C, -25°C
2. Test Times: -20°C/24Hrs; -25°C/4Hrs
3. Test Software: Windows XP / Run PassMark Burn In Test 4.0 Pro
4. Test Environment Curve:



**Sample Configuration & Quantity Under Test:**

Quantity: 4

**Test Result:**

No problem was found during the low temperature operation test.

**Test Date:** 08-21~22-2008

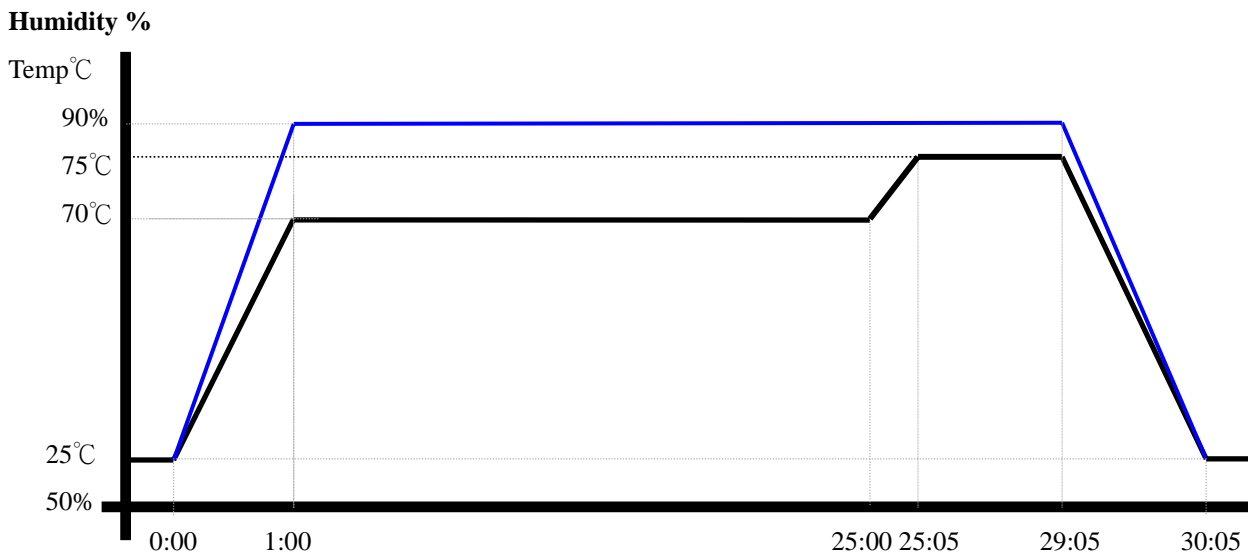
**Test Site:** AAEON QA Internal Lab.

**Test Standard:** Reference IEC 68-2-3 Testing procedures  
Test Ca: Damp Heat steady state Test

**Test Equipment:**  
Programmable Temperature & Humidity Chamber  
K.SON. INS. TECH. CORP.  
Model: THS-B6T-150+LN2  
Date of Calibration: 04/17/08  
Serial Number: 6488KT

**Test Condition:**

1. Test Temperature: 70°C, 90°C
2. Test Humidity: 90%RH
3. Test Times: 70°C/24Hrs; 75°C/4Hrs
4. Test Software: Windows XP / Run PassMark Burn In Test 4.0 Pro
5. Test Environment Curve:



**Sample Configuration & Quantity Under Test:**

Quantity: 4

**Test Result:**

No problem was found during the high temp./humidity operation test.

**Test Date:** 08-26~29-2008

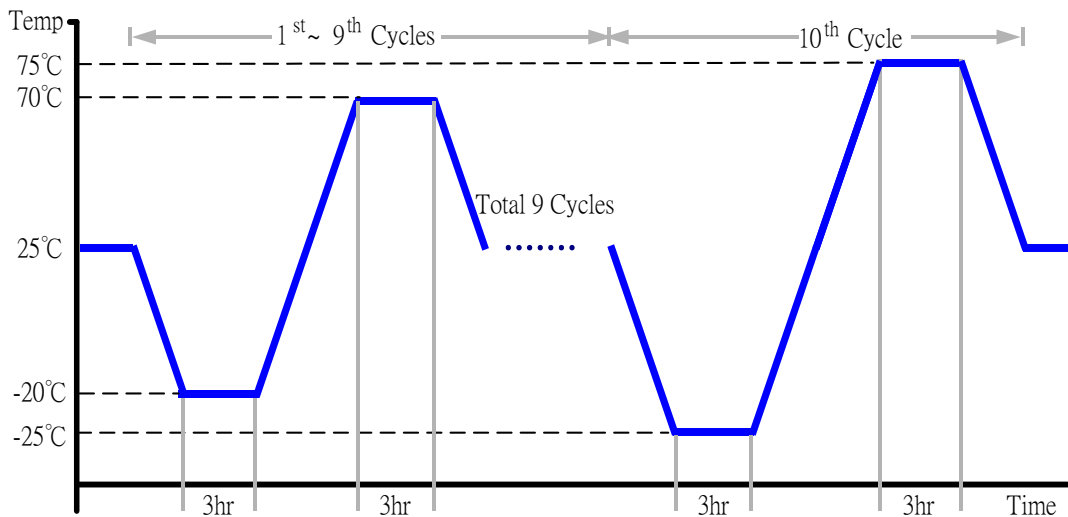
**Test Site:** AAEON QA Internal Lab.

**Test Standard:** Reference IEC 68-2-14 Testing procedures  
Test N: Change of temperature Test

**Test Equipment:**  
Programmable Temperature & Humidity Chamber  
K.SON. INS. TECH. CORP.  
Model: THS-D7S-100+1 N2  
Date of Calibration: 12/13/07  
Serial Number: 3898

**Test Condition:**

1. Test Low Temperature: -20°C (1~9 cycles)  
-25°C (10<sup>th</sup> cycle)
2. Test High Temperature: 70°C (1~9 cycles)  
75°C (10<sup>th</sup> cycle)
3. Test dwell time: 3Hrs
4. Temperature slope: 15°C/min
5. Test cycle: 10 cycles
6. Test Software: Windows XP / Run PassMark Burn In Test 4.0 Pro
7. Test Environment Curve:



**Sample Configuration & Quantity Under Test:**

Quantity: 4

**Test Result:**

No problem was found during the variation temperature operation test.