



Industrial Computing Platform Partner

PFM-540I

AT Power / Support DDR333 1G & DDR400 512MB Memory

Temperature cycle Test Report

Report NO: 06E020057

Issued by:

Rex Chang

/

11/17/2006

Test Engineer

Date

Reviewed by:

Wenyuan Yang

/

11/17/2006

Manager

Date

Temperature cycle test

Test Date: 10-31-2006~11-16-2006

Test Product: PFM-540I A1.0

Test Site: AAEON QA Internal Lab.

Performed By: Rex Chang

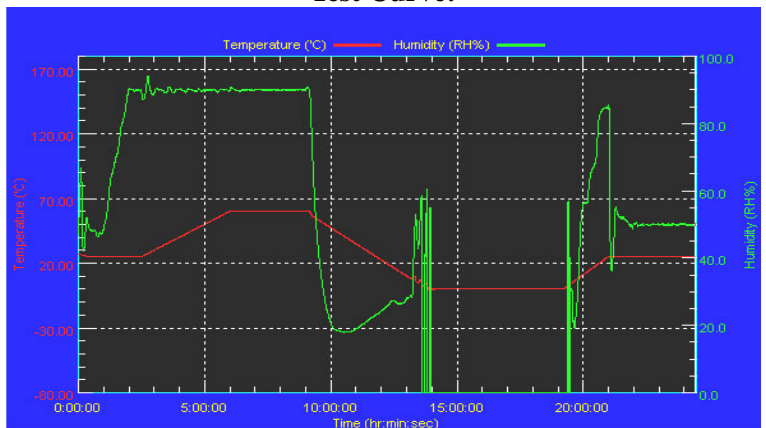
Test Standard: Reference IEC 68-2-30 Testing procedures
 Test DB: Damp Heat Test
 Reference IEC 68-2-61 Testing procedures
 Test Z/ABD: Climatic Sequence Test

Test Equipment:
 Programmable Temperature & Humidity Chamber
 K.SON. INS. TECH. CORP.
 Model: THS-D7S-100+1 N2
 Date of Calibration: 12/14/05
 Serial Number: 3898

**Temperature & Humidity Power On/Off Test:
 Testing Specification:**

| Step | Temperature (°C) | Humidity (%RH) | Duration (HH:MM) |
|------|------------------|----------------|------------------|
| 1 | 25 | 50 | 00:30 |
| 2 | 25 | 50 | 00:30 |
| 3 | 25 | 90 | 01:00 |
| 4 | 25 | 90 | 00:30 |
| 5 | 60 | 90 | 03:30 |
| 6 | 60 | 90 | 03:00 |
| 7 | 0 | 0 | 04:50 |
| 8 | 0 | 0 | 05:23 |
| 9 | 25 | 50 | 01:47 |
| 10 | 25 | 50 | 03:00 |

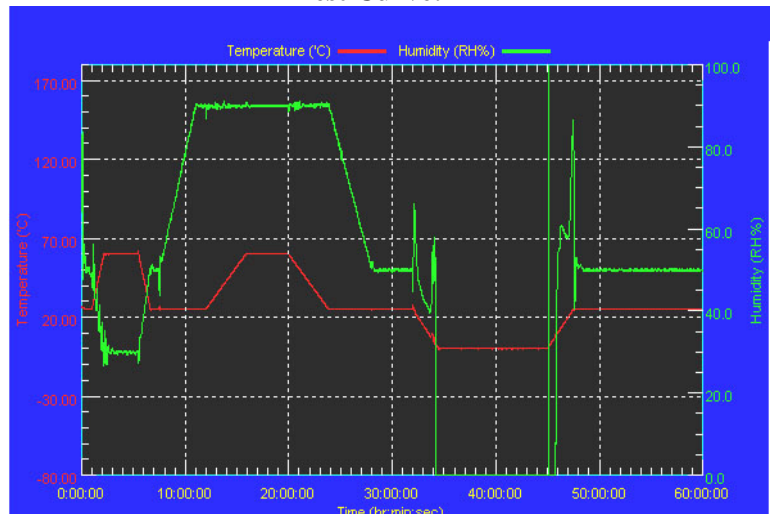
Test Curve:



**Temperature & Humidity Cycle Test:
 Testing Specification**

| Step | Temperature (°C) | Humidity (%RH) | Duration (HH:MM) |
|------|------------------|----------------|------------------|
| 1 | 25 | 50 | 00:30 |
| 2 | 25 | 50 | 00:30 |
| 3 | 60 | 30 | 01:10 |
| 4 | 60 | 30 | 03:20 |
| 5 | 25 | 50 | 01:10 |
| 6 | 25 | 50 | 00:50 |
| 7 | 25 | 90 | 03:30 |
| 8 | 25 | 90 | 01:00 |
| 9 | 60 | 90 | 03:53 |
| 10 | 60 | 90 | 04:07 |
| 11 | 25 | 90 | 03:53 |
| 12 | 25 | 50 | 04:07 |
| 13 | 25 | 50 | 03:30 |
| 14 | 25 | 50 | 00:30 |
| 15 | 0 | 0 | 02:30 |
| 16 | 0 | 0 | 10:30 |
| 17 | 25 | 50 | 02:30 |
| 18 | 25 | 50 | 00:30 |

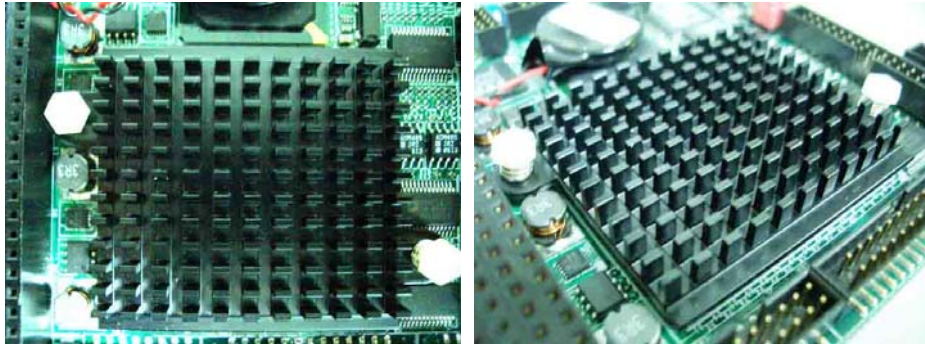
Test Curve:



Sample Configuration & Quantity Under Test:

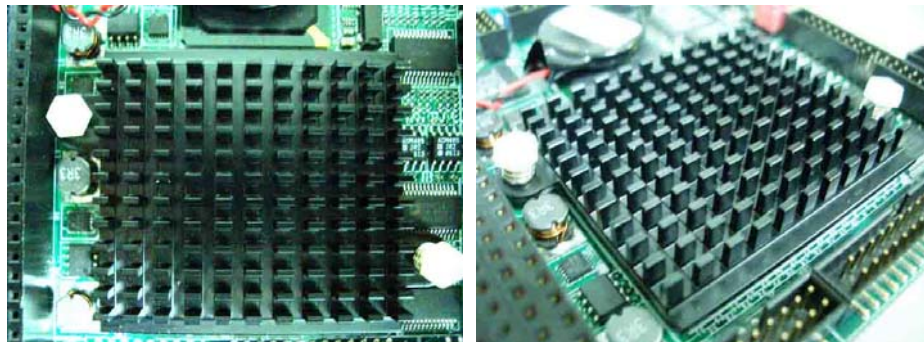
Sample 1: Support DDR333 / 1GB Memory

- a. CPU: AMD Geode LX800 (BIOS:1.0)
- b. SDRAM: DSL 1G / ELPIDA EBD11UD8ADDA-6B (SO-DDR333)
- c. Chipset: AMD LX + CS5536
- d. VGA: Integrated in AMD LX
- e. LAN: Realtek RTL8139DL 10/100Mbps
- f. CFD: SanDisk 32MB
- g. HDD: Seagate ST320424A 20.4GB
- h. Test Software: Windows XP / Run PassMark Burn In Test Pro 4.0
- i. AT Power Supply: Zippy SP2-4300F
- j. Heat Sink:



Sample 1: Support DDR400 / 512MB Memory

- a. CPU: AMD Geode LX800 (BIOS: 1.0)
- b. SDRAM: Transcend 512MB / SAMSUNG K4H5108380-UCCC (SO-DDR400)
- c. Chipset: AMD LX + CS5536
- d. VGA: Integrated in AMD LX
- e. LAN: Realtek RTL8139DL 10/100Mbps
- f. CFD: SanDisk 32MB
- g. HDD: Seagate ST320424A 20.4GB
- h. Test Software: Windows XP / Run PassMark Burn In Test Pro 4.0
- i. AT Power Supply: Zippy SP2-4300F
- j. Heat Sink:



Test Result:

Sample 1: Support DDR333 / 1GB Memory

- a. Temperature & Humidity Power On/Off Test:**
No problem was found during the Temperature & Humidity Power On/Off Test.
- b. Temperature & Humidity Cycle Test:**
No problem was found during the Temperature & Humidity Cycle Test.

Sample 2: Support DDR400 / 512MB Memory

- a. Temperature & Humidity Power On/Off Test:**
No problem was found during the Temperature & Humidity Power On/Off Test.
- b. Temperature & Humidity Cycle Test:**
No problem was found during the Temperature & Humidity Cycle Test.