



Industrial Computing Platform Partner

PFM-532I

Temperature cycle Test Report

Report NO: 05E020037

Issued by: **Rex Chang** / **11/18/2005**

Test Engineer Date

Reviewed by: **Wenyuan Yang** / **11/18/2005**

Manager Date

Test Date: 11-11~17-2005

Test Product: PFM-532I Rev: A0.2

Test Site: AAEON QA Internal Lab.

Performed By: Rex Chang

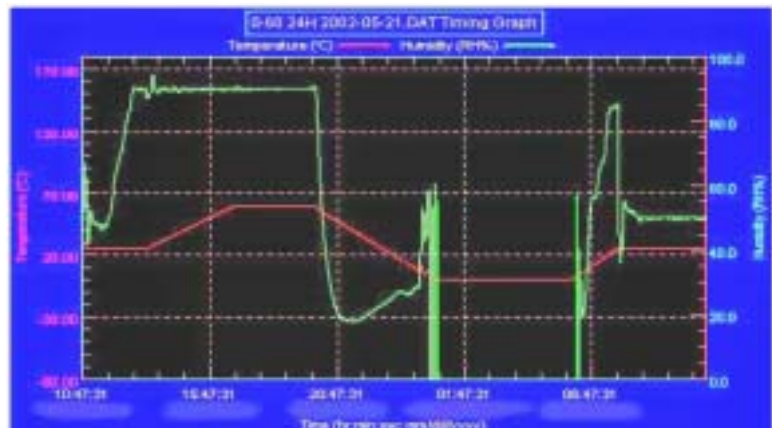
Test Standard: Reference IEC 68-2-30 Testing procedures
 Test DB: Damp Heat Test
 Reference IEC 68-2-61 Testing procedures
 Test Z/ABD: Climatic Sequence Test

Test Equipment:
 Programmable Temperature & Humidity Chamber
 K.SON. INS. TECH. CORP.
 Model: THS-D4H+-100
 Date of Calibration: 05/23/05
 Serial Number: 1241

**Temperature & Humidity Power On/Off Test:
 Testing Specification:**

Step	Temperature ()	Humidity (%RH)	Duration (HH:MM)
1	25	50	00:30
2	25	50	00:30
3	25	90	01:00
4	25	90	00:30
5	60	90	03:30
6	60	90	03:00
7	0	0	04:50
8	0	0	05:23
9	25	50	01:47
10	25	50	03:00

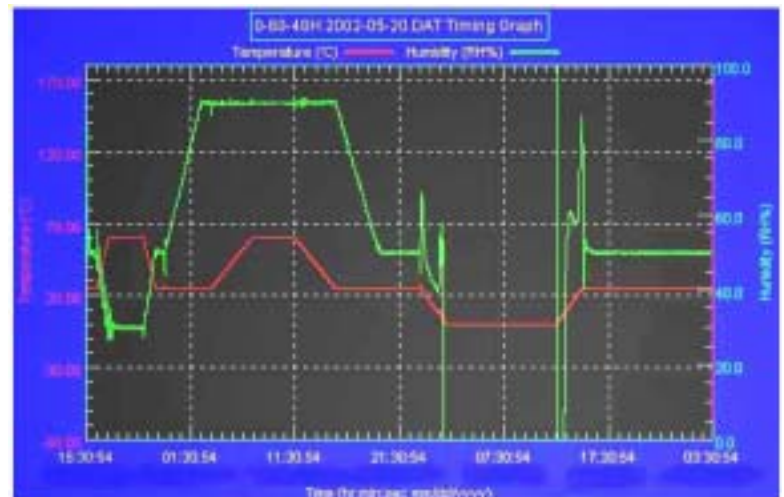
Test Curve:



**Temperature & Humidity Cycle Test:
 Testing Specification**

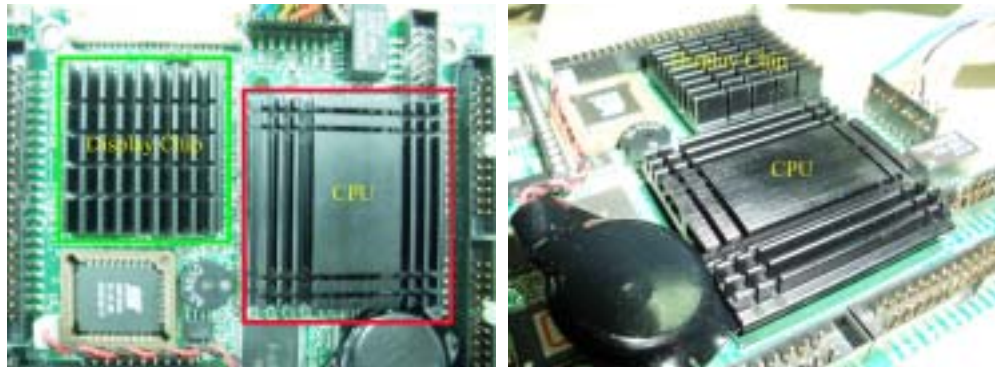
Step	Temperature ()	Humidity (%RH)	Duration (HH:MM)
1	25	50	00:30
2	25	50	00:30
3	60	30	01:10
4	60	30	03:20
5	25	50	01:10
6	25	50	00:50
7	25	90	03:30
8	25	90	01:00
9	60	90	03:53
10	60	90	04:07
11	25	90	03:53
12	25	50	04:07
13	25	50	03:30
14	25	50	00:30
15	0	0	02:30
16	0	0	10:30
17	25	50	02:30
18	25	50	00:30

Test Curve:



Sample Configuration & Quantity Under Test:

1. CPU: Onboard STPC-ELITE STPC –DX2 133MHz (Bios Ver.0.5)
2. SDRAM: 32MB Hynix HY57V643220DPT-6 (PC-133)
3. VGA: SMI LynxEM+ SM712 W/4MB Video RAM
4. LAN: Realtek 8100BL
5. CFD: PQI 32MB
6. Software: DOS Mode / Run QAPlus 5.5
7. AT Power Supply: Enhance ENP-1815
8. Heat Sink:



Test Result:

Passed.