



PD8500

Environment Test Report

Report NO : 03P020016

Issued by:

Rex-Chang
DV Engineer

/

07/16/2003

Date

Reviewed by:

Wayne-Chen
A.V.P

/

07/16/2003

Date

1. <i>Test Item List</i> -----	2
2. <i>Temperature Cycle Operation Test</i> -----	3
3. <i>High Temperature / Humidity Storage Test</i> -----	5
4. <i>Low Temperature Storage Test</i> -----	6
5. <i>Humidity Test</i> -----	7
6. <i>Cold Start Test</i> -----	8

Num	Item	Spec
1.	Control Box :	AEC-6000 ver.B (GENE-6310)
2.	LCD panel :	PD8500 15" Sun-Readable TFT LCD Display
	1.LCD	TFT LCD.15" LITEMAX CLAA150XG01
	2.Power Adapter	PHIHONG PSA65U-120G1 (AC Input : 100-240V~1.5A ; DC Output : 12V/5A)
	3.A/D board	LITEMAX LM 1513_CB
	4.Inverter	LITEMAX LI 2203

PD8500

Test Date: 07-14~16-2003

Test Product: PD8500 Sun-Readable TFT LCD Display

Test Site: AAEON DV Internal Lab.

Performed By : Rex Chang

Test Standard :

Reference IEC 68-2-61 Testing procedures
Test Z/ABD : Climatic Sequence Test

Test Equipment:

Programmable Temperature & Humidity Chamber

K.SON. INS. TECH. CORP.

Model : THS-D4H+-100

Date of Calibration : 06/03/03

Serial Number: 1241

Temperature Measurement :

20 Channel Thermal Recorder:

YOKOGAWA Inc,

Model : DA100-13-1D

Date of Calibration : 01/03/03

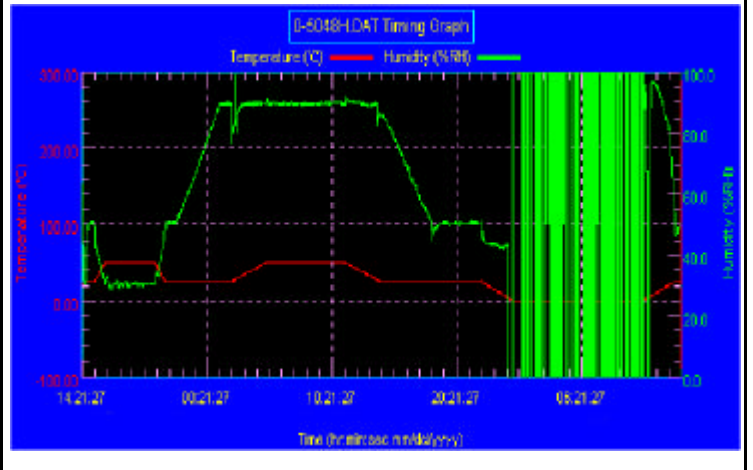
Serial Number: 12A323190

Temperature & Humidity Cycle Test:

Testing Specification

Step	Temperature ()	Humidity (%RH)	Duration (HH:MM)
1	25	50	00:30
2	25	50	00:30
3	50	30	00:50
4	50	30	04:00
5	25	50	00:50
6	25	50	00:50
7	25	90	03:30
8	25	90	01:00
9	50	90	02:46
10	50	90	06:21
11	25	90	02:46
12	25	50	04:07
13	25	50	03:30
14	25	50	00:30
15	0	0	02:30
16	0	0	10:30
17	25	50	02:30
18	25	50	00:30

Test Curve:

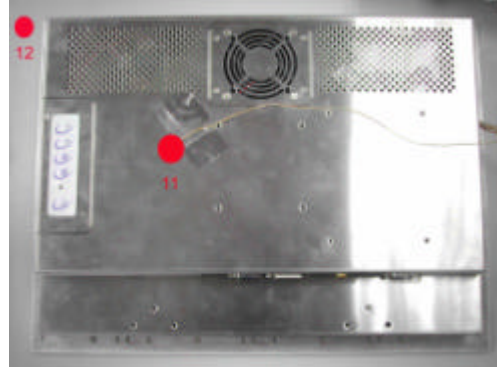
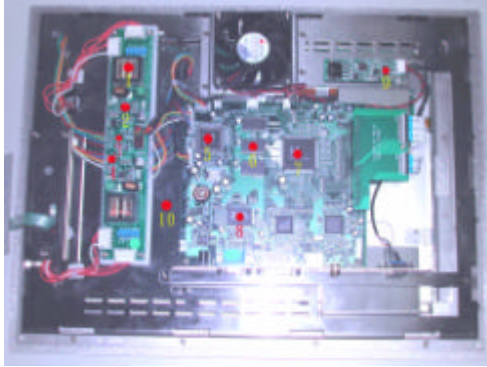


Sample Configuration & Quantity Under Test:

Using one PD8500 15" Sun-Readable TFT LCD Display.

Temperature Recorder:

Measuring Accelerometer Position:



Thermal profile data :

PD-8500 15" Sun-Readable TFT LCD Display

Point	Temp. Stage		
	50	25	0
1. Inverter - T1	62.3	38.4	47.5
2. Inverter - O1	79.9	59.4	59.4
3. Inverter - U2	85.6	65.4	67.4
4. Inverter - O5	75.8	54.7	50.2
5. AD Board - UMCU1	64.4	40.2	18.7
6. AD Board - UDRAM2	64.6	40.2	18.9
7. AD Board - ULCCD1	63.6	39.1	15.8
8. AD Board - UADC1	74.6	50.0	22.5
9. Touch Screen - U3	53.7	29.1	5.1
10. Inside Air Temperature	67.9	42.9	17.2
11. Control Box, External Surface	54.2	29.5	8.4
12. Chamber Air Temperature	50.9	25.6	0.9
13. LCD Panel Solder Side Surface (1)	54.8	32.3	12.4
14. LCD Panel Solder Side Surface (2)	60.2	42.7	25.1
15. LCD Panel Solder Side Surface (3)	61.5	41.6	19.8
16. LCD Panel Solder Side Surface (4)	65.8	46.8	27.4
17. LCD Panel Solder Side Surface (5)	68.9	51.3	32.6
18. LCD Panel Solder Side Surface (6)	60.4	40.6	21.0
19. LCD Panel Solder Side Surface (7)	66.3	46.4	24.2
20. LCD Panel Solder Side Surface (8)	65.8	45.4	22.6

Sample Configuration & Quantity Under Test:

Quantity: 1 (PD8500 15" Sun-Readable TFT LCD Display)

Test Result:

Passed.

The PD8500 15" Sun-Readable TFT LCD Display meets temperature cycle test

PD8500

Test Date: 06-07~11-2003**Test Product:** PD8500 15" Sun-Readable TFT LCD Display**Test Site:** AAEON DV Internal Lab.**Performed By :** Rex Chang**Test Standard :** Reference IEC 68-2-56 Testing procedures
Test Cb : Damp Heat Steady State Test (Non-operation)**Test Standard :** Reference IEC 68-2-2 Testing procedures
Test Bb : Dry Heat Test (Non-operation)**Test Equipment:**

Programmable Temperature & Humidity Chamber

K.SON. INS. TECH. CORP.

Model : THS-D4L+-100

Date of Calibration : 10/28/02

Serial Number: 2582

Testing Item:

1. Test Temperature: 60
2. Test Times: 48Hrs
3. Test Software: Windows media Player (Video test soft-MPEG from HDD)
4. Test Environment Curve:

**Sample Configuration & Quantity Under Test:**

Quantity: 1 (PD8500 15" Sun-Readable TFT LCD Display)

Test Result:**Passed.**

The PD8500 15" Sun-Readable TFT LCD Display meets High temperature storage test.

OPD8500

Test Date: 06-22~24-2003**Test Product:** PD8500 15" Sun-Readable TFT LCD Display**Test Site:** AAEON DV Internal Lab.**Performed By :** Rex Chang**Test Standard :** Reference IEC 68-2-1
Testing procedures Test Ab : Cold Test (Non-operation)**Test Equipment:**

Programmable Temperature & Humidity Chamber

K.SON. INS. TECH. CORP.

Model : THS-D4H+-100

Date of Calibration : 10/28/02

Serial Number: 2582

Testing Item:

1. Test Temperature : -20
2. Test Times : 48Hrs
3. Test Software : Windows media Player (Video test soft-MPEG from HDD)
4. Test Environment Curve :

**Sample Configuration & Quantity Under Test:**

Quantity: 1 (PD8500 15" Sun-Readable TFT LCD Display)

Test Result:**Passed.**

The PD8500 15" Sun-Readable TFT LCD Display meets Low temperature storage test

PD8500**Test Date:** 06-24~26-2003**Test Product:** PD8500 15" Sun-Readable TFT LCD Display**Test Site:** AAEON DV Internal Lab.**Performed By :** Rex Chang**Test Standard :** Reference IEC 68-2-30 Testing procedures
Test Db : Humidity test (Non-operation)**Test Equipment:**

Programmable Temperature & Humidity Chamber

K.SON. INS. TECH. CORP.

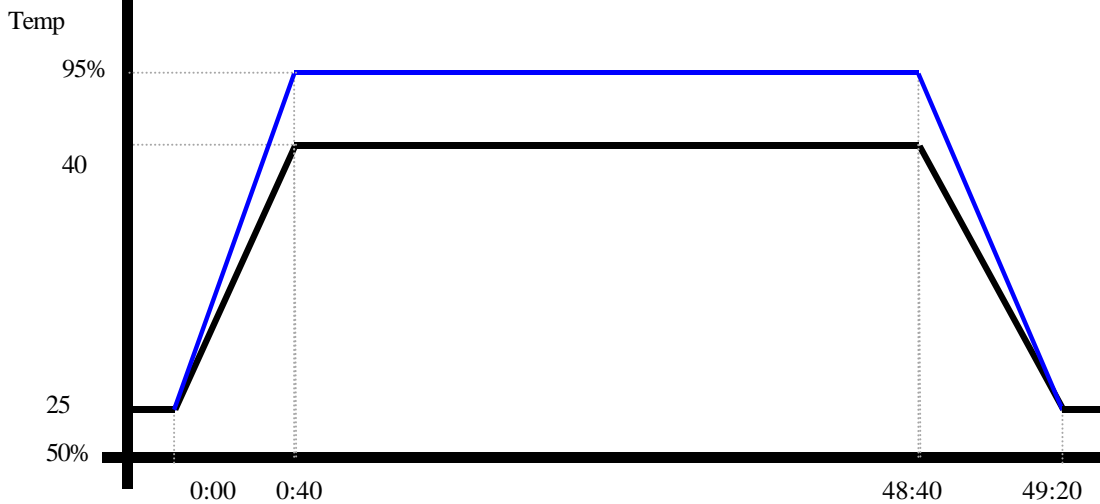
Model : THS-D4H+-100

Date of Calibration : 06/03/03

Serial Number: 1241

Testing Item:

1. Test Temperature: 40
2. Test Humidity : 95%RH
3. Test Times: 48Hrs
4. Test Software : Windows media Player (Video test soft-MPEG from HDD)
5. Test Environment Curve:

Humidity %**Sample Configuration & Quantity Under Test:**

Quantity: 1 (PD8500 15" Sun-Readable TFT LCD Display)

Test Result:**Passed.**

The PD8500 15" Sun-Readable TFT LCD Display meets Humidity test

PD8500**Test Date:** 06-18~19-2003**Test Product:** PD8500 15" Sun-Readable TFT LCD Display**Test Site:** AAEON DV Internal Lab.**Performed By :** Rex Chang**Test Standard :** Reference IEC 68-2-1 Testing procedures
Test Ab : Cold Test**Test Equipment:**

Programmable Temperature & Humidity Chamber

K.SON. INS. TECH. CORP.

Model : THS-D4H+-100

Date of Calibration : 06/03/03

Serial Number: 1241

Test Condition :

1. Test Temperature : 0

2. Test Times : 5Hrs

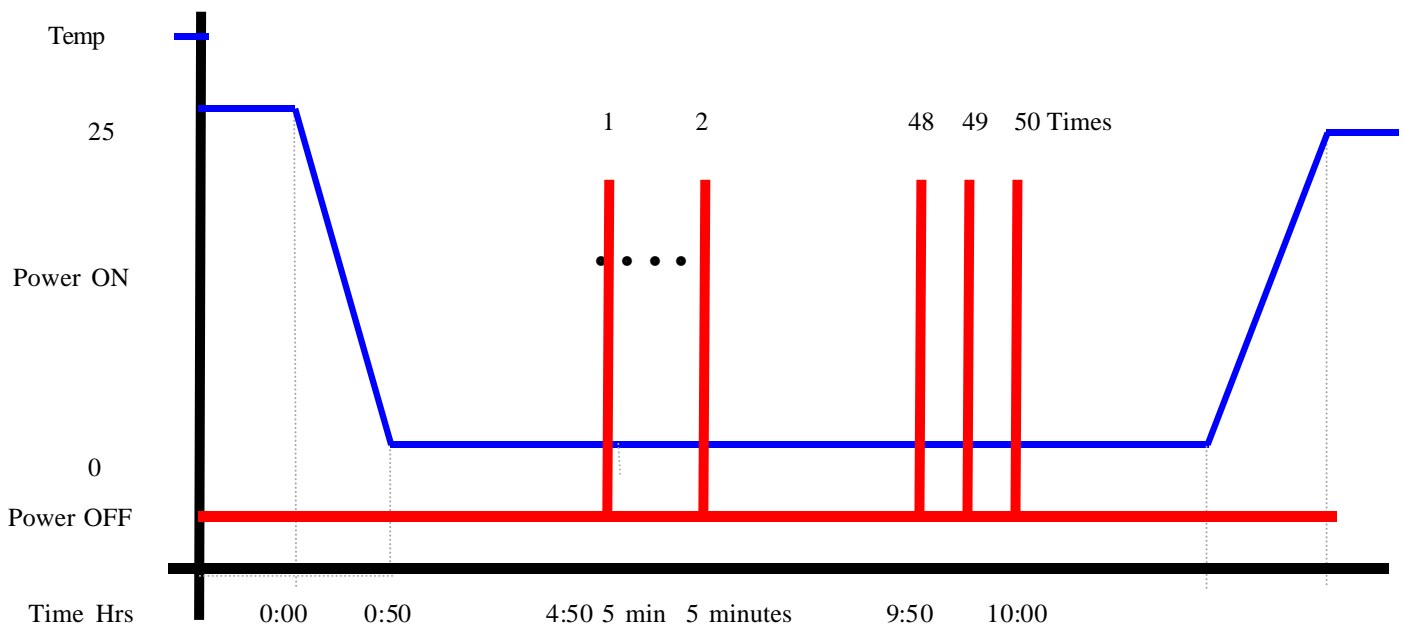
Power off 4 hours before first time power on

Power off to next power on between 10 minutes

3. Number of test : 50 times

4. Test Software : Windows98SE

5. Test Environment Curve :



PD8500

Sample Configuration & Quantity Under Test:

Quantity: 1 (PD8500 15" Sun-Readable TFT LCD Display)

Test Result:

Passed.

The PD8500 15" Sun-Readable TFT LCD Display meets Cold start test.