



Industrial Computing Platform Partner

PCM-6894 A1.1

Temperature cycle Test Report

Report NO: 05E020004

Issued by: Rex Chang / 01/24/2005
Engineer

Reviewed by: Wenyuan Yang / 01/24/2005
Manager

PCM-6894 Rev: A1.1

Test Date: 01-12~24-2005

Test Product: PCM-6894 Rev: A1.1 (BIOS Rev: 1.2)

Test Site: AAEON QA Internal Lab.

Performed By: Rex Chang

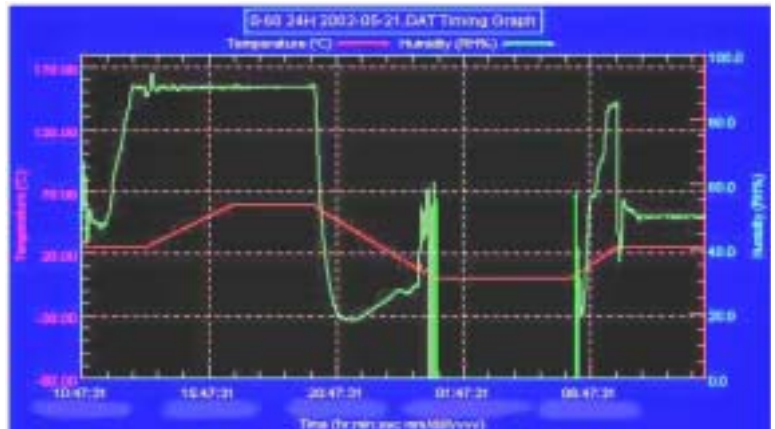
Test Standard: Reference IEC 68-2-30 Testing procedures
 Test DB: Damp Heat Test
 Reference IEC 68-2-61 Testing procedures
 Test Z/ABD: Climatic Sequence Test

Test Equipment:
 Programmable Temperature & Humidity Chamber
 K.SON. INS. TECH. CORP.
 Model: THS-D4H+-100
 Date of Calibration: 05/24/04
 Serial Number: 1241

**Temperature & Humidity Power On/Off Test:
 Testing Specification:**

Step	Temperature ()	Humidity (%RH)	Duration (HH:MM)
1	25	50	00:30
2	25	50	00:30
3	25	90	01:00
4	25	90	00:30
5	60	90	03:30
6	60	90	03:00
7	0	0	04:50
8	0	0	05:23
9	25	50	01:47
10	25	50	03:00

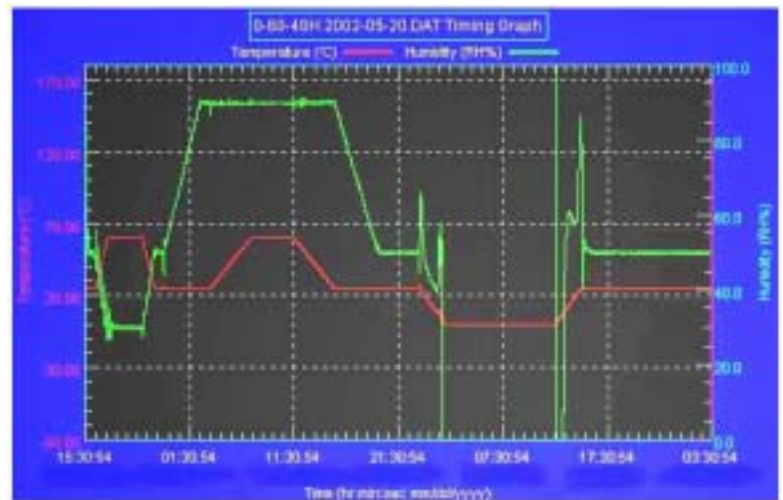
Test Curve:



**Temperature & Humidity Cycle Test:
 Testing Specification**

Step	Temperature ()	Humidity (%RH)	Duration (HH:MM)
1	25	50	00:30
2	25	50	00:30
3	60	30	01:10
4	60	30	03:20
5	25	50	01:10
6	25	50	00:50
7	25	90	03:30
8	25	90	01:00
9	60	90	03:53
10	60	90	04:07
11	25	90	03:53
12	25	50	04:07
13	25	50	03:30
14	25	50	00:30
15	0	0	02:30
16	0	0	10:30
17	25	50	02:30
18	25	50	00:30

Test Curve:



Sample Configuration & Quantity Under Test:

Sample 1: PCM-6894 A1.1 (ATX Power) Temperature & Humidity Power On/Off and Cycle Test:

1. CPU: Intel Pentium III 1.4GHz (Bios Ver.1.2)
2. SDRAM: ELPIDA D45128841G5-A75-9JF 256MB (PC133)
3. Chipset: VIA VT82C694T / VIA VT82C686B
4. VGA: SMI SM722 (Built-In 8MB)
5. CFD: PQI 32MB
6. HDD: Maxtor 90340D2 / 3.4GB
7. Test Software: Windows XP / Run HCT10.0
8. ATX Power Supply: Seventeam ST-300BLV
9. CPU Cooler:



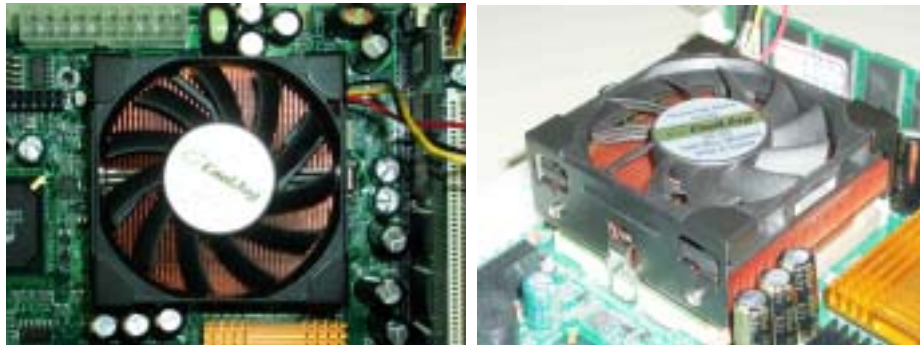
Sample 2: PCM-6894 A1.1 (AT Power) Temperature & Humidity Power On/Off Test

1. CPU: Intel Celeron 1.2GHz (Bios Ver.1.2)
2. SDRAM: Hynix HY57V56820BT-H 512MB (PC133)
3. Chipset: VIA VT82C694T / VIA VT82C686B
4. VGA: SMI SM722 (Built-In 8MB)
5. CFD: PQI 32MB
6. AT Power Supply: Zippy SP2-4300F
7. CPU Cooler:



Sample 3: PCM-6894 A1.1 (AT Power) Temperature & Humidity Cycle Test

1. CPU: Intel Pentium III / 1.4GHz (Bios Ver.1.2)
2. SDRAM: ELPIDA D45128841G5-A75-9JF 256MB (PC133)
3. Chipset: VIA VT82C694T / VIA VT82C686B
4. VGA: SMI SM722 (Built-In 8MB)
5. HDD: Maxtor 90340D2 / 3.4GB
6. Test Software: Windows XP / Run HCT10.0
7. AT Power Supply: Zippy SP2-4300F
8. CPU Cooler:



Test Result :

Passed.