



*Industrial Computing Platform Partner*

# PCM-5895

## Temperature/Humidity Test Report

Report NO: 07E020003

Issued by: Rex Chang / 01/25/2007  
Test Engineer Date

Reviewed by: Wenyuan Yang / 01/25/2007  
Manager Date

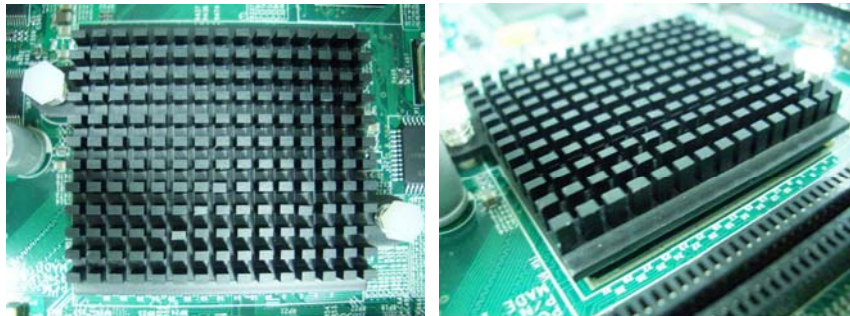
# Test item list

1. <i>Test item list</i> -----	2
2. <i>Temp./humidity power on/off test</i> -----	3
3. <i>Temp./humidity cycle test</i> -----	4
4. <i>Cold start and hot start test</i> -----	5

## Test Product: PCM-5895 A0.2 (ATX Power)

### Sample Configuration & Quantity Under Test:

1. CPU: AMD Geode LX 800 (500MHz) on board (Bios Ver.0.3)
2. SDRAM: Transcend DDR400 1GB (SAMSUNG 4H560438E-GCCC)
3. Chipset: AMD LX series + CS5536
4. VGA: AMD Geode LX 800 integrated graphic
5. CFD: PQI 32MB
6. HDD: Maxtor DiamondMax Plus 9 / 80GB
7. Test Software: Windows XP / PassMark Burn In Test Pro 4.0
8. ATX Power Supply: FSP ATX-300PA
9. Heat Sink:



# Temp./humidity power on/off test

**Test Date:** 01-18~19-2007

**Test Site:** AAEON QA Internal Lab.

**Test Standard:** Reference IEC 68-2-30 Testing procedures  
Test DB: Damp Heat Test

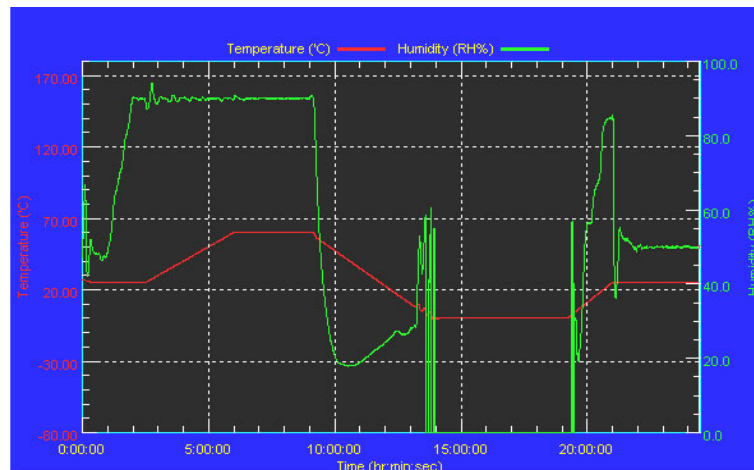
**Test Equipment:**  
Programmable Temperature & Humidity Chamber  
K.SON. INS. TECH. CORP.  
Model: THS-D4H+-100  
Date of Calibration: 05/19/06  
Serial Number: 1241

**Temperature & Humidity Power On/Off Test:**

**Testing Specification:**

Step	Temperature (°C)	Humidity (%RH)	Duration (HH:MM)
1	25	50	00:30
2	25	50	00:30
3	25	90	01:00
4	25	90	00:30
5	60	90	03:30
6	60	90	03:00
7	0	0	04:50
8	0	0	05:23
9	25	50	01:47
10	25	50	03:00

**Test Curve:**



**Test Result:**

No problem was found during the Temperature & Humidity Power On/Off Test..

# Temp./humidity cycle test

**Test Date:** 01-19~22-2007

**Test Site:** AAEON QA Internal Lab.

**Test Standard:** Reference IEC 68-2-61 Testing procedures  
Test Z/ABD: Climatic Sequence Test

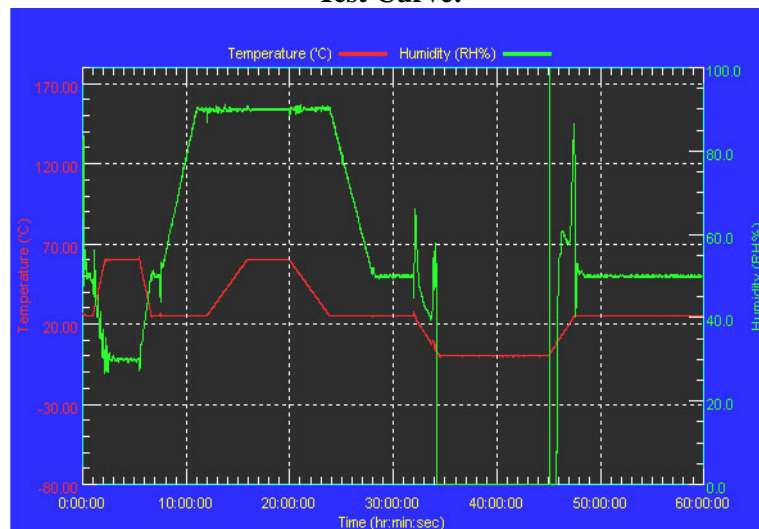
**Test Equipment:**  
Programmable Temperature & Humidity Chamber  
K.SON. INS. TECH. CORP.  
Model: THS-D4H+-100  
Date of Calibration: 05/19/06  
Serial Number: 1241

**Temperature & Humidity Cycle Test:**

**Testing Specification**

Step	Temperature (°C)	Humidity (%RH)	Duration (HH:MM)
1	25	50	00:30
2	25	50	00:30
3	60	30	01:10
4	60	30	03:20
5	25	50	01:10
6	25	50	00:50
7	25	90	03:30
8	25	90	01:00
9	60	90	03:53
10	60	90	04:07
11	25	90	03:53
12	25	50	04:07
13	25	50	03:30
14	25	50	00:30
15	0	0	02:30
16	0	0	10:30
17	25	50	02:30
18	25	50	00:30

**Test Curve:**



**Test Result:**

No problem was found during the Temperature & Humidity Cycle Test.

# Cold start and hot start test

**Test Date:** 01-22~23-2007

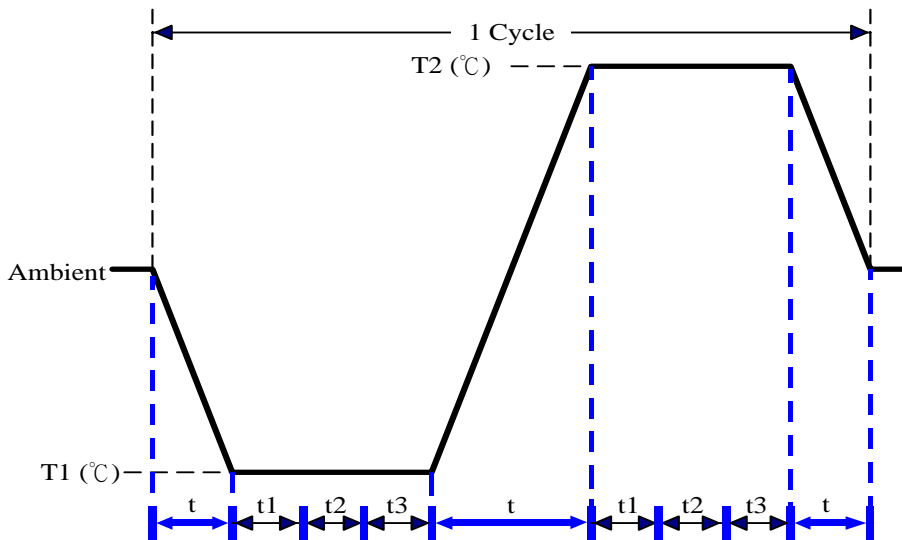
**Test Site:** AAEON QA Internal Lab.

**Performed By:** Rex Chang

**Test Standard:** Reference IEC 68-2-14 Testing procedures  
Test N: Change of temperature Test

**Test Equipment:**  
Programmable Temperature & Humidity Chamber  
K.SON. INS. TECH. CORP.  
Model: THS-D7S-100+1 N2  
Date of Calibration: 12/14/06  
Serial Number: 3898

**Test Condition:**



Parameters	Description
T1	-5°C
T2	65°C
t1	1 hrs
t2	2 hrs
t3	2 hrs
t	2°C/min
n (Cycle)	1

t = temperature slope  
t ~ t1: Power Off  
t2: Power on/off test 10 times (on 2 min / off 5min)  
t3: Run Burn In Test Pro 4.0  
Test Software: Windows XP

**Test Result:**

- a. No problem was found during the cold start test.
- b. No problem was found during the hot start test.