



AAEON Technology INC.
ISO-9001/ISO-14001 Certified
Industrial Automation PCs

PCM-5894 B1

Environment Test Report

Release Date : Nov. 02, 1999

Issue Stamp

QA Manager

QE Manager

Test Engineer

Environment

Model Name : PCM-5894 B1

Test Date : 99-11-02

Test Site : AAEON QE Dept.

Performed by : George Hsin

Test Standard :

Select	NO.	Description
√	IEC 68-2-30	Test DB : Damp Heat Test
√	IEC 68-2-61	Test Z/ABD : Climatic Sequence Test

Testing Item :

Temperature & Humidity Cycle
Test Temperature & Humidity Power On/Off Test

Additional Test Peripheral :

Configuration	Model
Test Software	QAPluse/FE V5.29
Test Fixture	Power on/off(110V) Fixture

Testing Equipment :

Programmable Temperature & Humidity Chamber
Model : Ths-D4L+-100
S/N : 1241
Date of Calibration : 07-10-1998

Sample Configuration & Quantity Under Test :

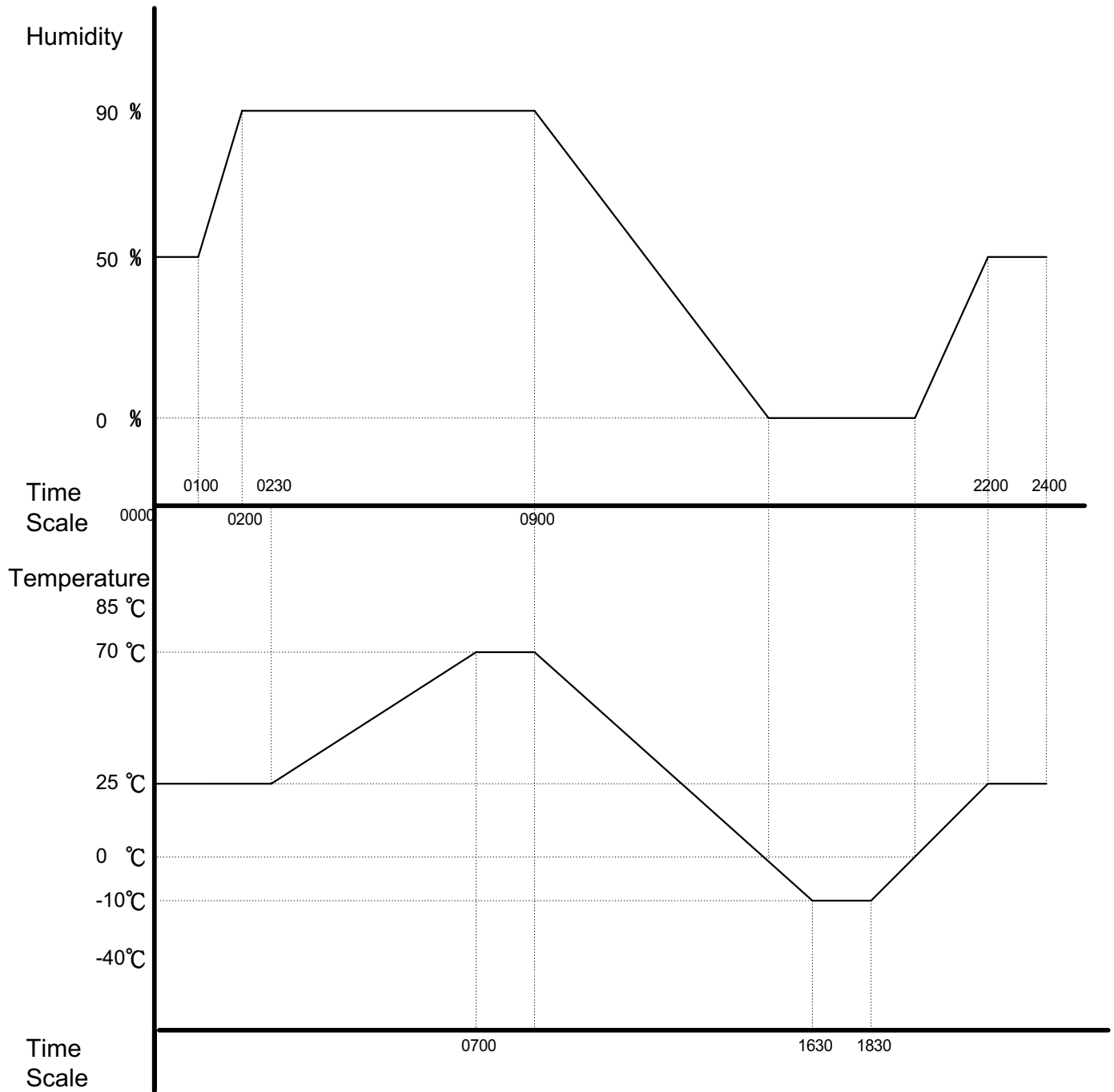
Use PCM-5894 Little Board Socket 7 Single Board with the following options installed .
1.CPU : K6-2 300MHz
2.DRAM : 64MB(MN4117405CSJ-6 32M)
3.Chipset : SiS 5582
4.VGA Chipset : C&T 65554
5.I/O Chipset : UM8663F/ITE

Test Result :

Standard	Description	Result
IEC 68-2-30	Temperature & Humidity Power On/Off Test	Pass
IEC 68-2-61	Temperature&HumidityCycle Test(Run QAPluse/FE V5.29)	Pass

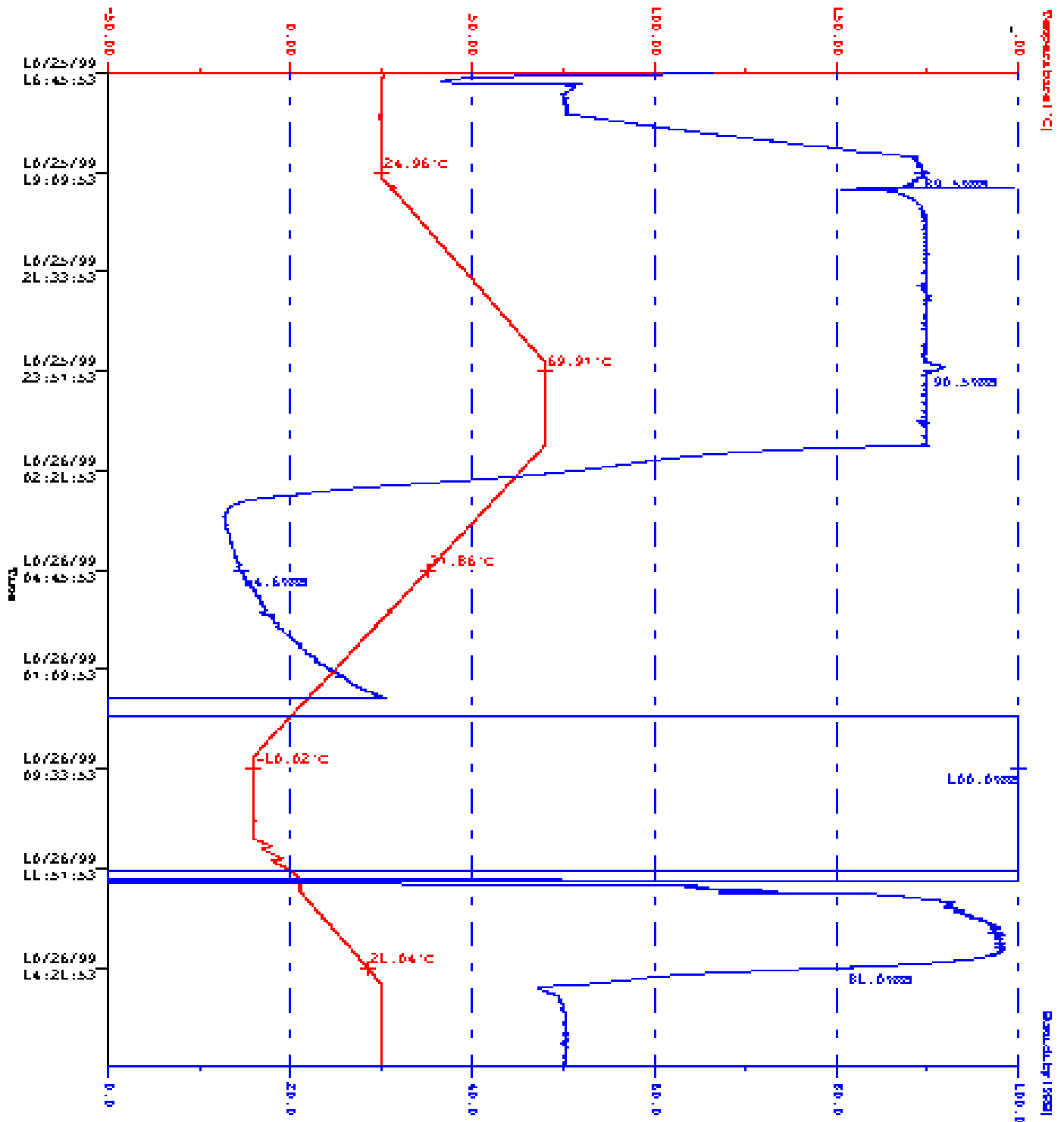
Environment

Temperature & Humidity Power On/Off Test



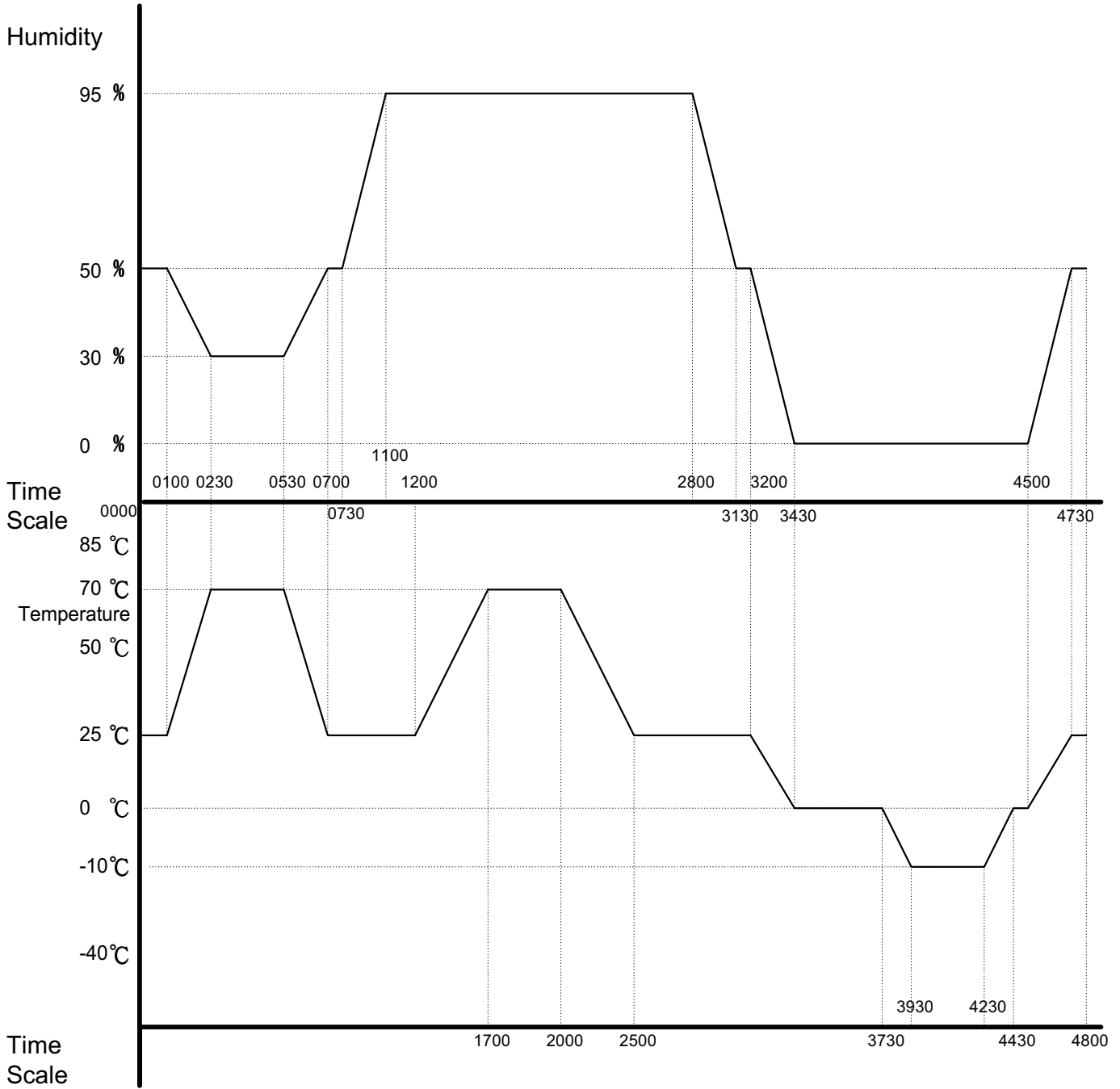
Environment

Temperature & Humidity Power On/Off Test



Environment

Temperature & Humidity Cycle Test (QAPLuse/FE V5.29)



Environment

Temperature & Humidity Cycle Test (QAPLuse/FE V5.29)

