



PCM-4896

Temperature / Humidity Test Report

Issued by:

Art Liao
QE Engineer

/

06/21/2002

Date

Reviewed by:

Wen - Yuan Yang
QE Manager

/

06/21/2002

Date

1. Test Product: FC / Socket 7 Compact Board

2. Model Name: PCM-4896 REV.B1.2

3. Test Date: 06-18-2002

4. Test Site: AAEON QA Internal Lab.

5. Test Equipment

Type	MFR	Model Number	Serial Number	Last CAL.
Programmable Temperature & Humidity Chamber	KSON	Ths-D4L+-100	2582	10/29/01

6. Test Standard :

NO.	Description
IEC 68-2-30	Test DB : Damp Heat Test
IEC 68-2-61	Test Z/ABD : Climatic Sequence Test

7. Testing Item:

- Temperature & Humidity Cycle
- Test Temperature & Humidity Power On/Off Test

8. Additional Test Peripheral:

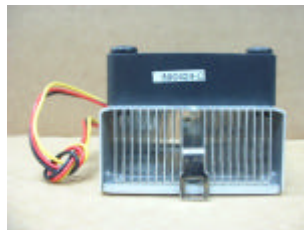
Configuration	Model
Test Software	QAPLus 5.5
Test Fixture	Power on/off(110V) Fixture

9. Sample Configuration & Quantity Under Test:

- Quantity: 1
- Sample Configuration:

CPU	GXM -233MHz 2.9V 85C MMX-ENHANCE
DRAM	SDRAM 256MB NEC D4564841G5 (PC-100 SDRAM)
System BIOS Version	PCM-4896 BIOS Rev.1.2
Chipset	GEODE 5530A-UCE
VGA Chipset	C&T B69000
I/O Chipset	ITE-IT8661F Fully 16 bit I/O decoded.
Cooler (P/N)	1759200316

Cooler (P/N): 1759200316



10. Test Result:

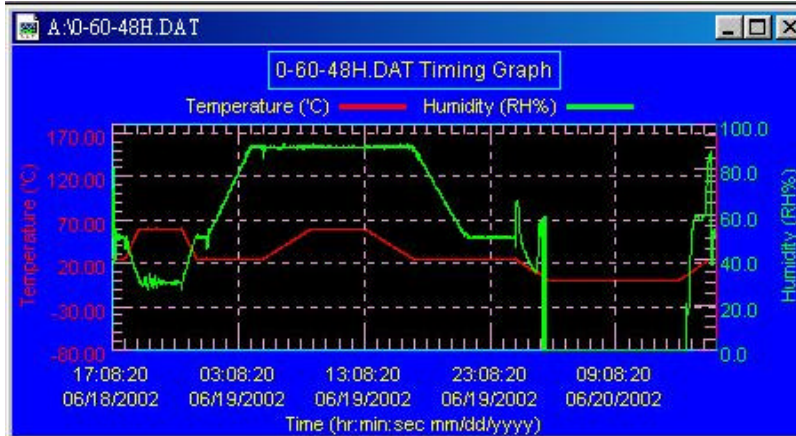
Standard	Description	Result
IEC 68-2-61	Temperature & Humidity Cycle Test (Run QAPLus 5.5)	Pass
IEC 68-2-30	Temperature & Humidity Power On/Off Test	Pass

11. Temperature & Humidity Cycle Test:

11-1 Testing Specification:

Step	Temperature ()	Humidity (%RH)	Duration (HH:MM)
1	25	50	00:30
2	25	50	00:30
3	60	30	01:10
4	60	30	03:20
5	25	50	01:10
6	25	50	00:50
7	25	90	03:30
8	25	90	01:00
9	60	90	03:53
10	60	90	04:07
11	25	90	03:53
12	25	50	04:07
13	25	50	03:30
14	25	50	00:30
15	0	0	02:30
16	0	0	10:30
17	25	50	02:30
18	25	50	00:30

11-2 Test Curve:



12. Temperature & Humidity Power On/Off Test

12-1 Testing Specification:

Step	Temperature ()	Humidity (%RH)	Duration (HH:MM)
1	25	50	00:30
2	25	50	00:30
3	25	90	01:00
4	25	90	00:30
5	60	90	03:30
6	60	90	03:00
7	0	0	04:50
8	0	0	05:23
9	25	50	01:47
10	25	50	03:00

12-2 Test Curve:

