



**AAEON**Technology INC.  
ISO-9001/ISO-14001 Certified  
Industrial Automation PCs

# **PCM-4335**

## **Temperature / Humidity Test Report**

Issued by:

\_\_\_\_\_  
Rex Chang  
QE Engineer

/

*03/25/2002*

\_\_\_\_\_  
Date

Reviewed by:

\_\_\_\_\_  
Wen - Yuan Yang  
QE Manager

/

*03/25/2002*

\_\_\_\_\_  
Date

- 1. Test Product: Industrial PC
- 2. Model Name: PCM-4335 REV.A1.1
- 3. Test Date: 03-19-2002
- 4. Test Site: AAEON QA Internal Lab.
- 5. Test Equipment

Type	MFR	Model Number	Serial Number	Last CAL.
Programmable Temperature & Humidity Chamber	KSON	Ths-D4L+-100	1241	06/10/01
Programmable Temperature & Humidity Chamber	KSON	Ths-D4L+-100	2582	10/29/01

6. Test Standard :

NO.	Description
IEC 68-2-30	Test DB : Damp Heat Test
IEC 68-2-61	Test Z/ABD : Climatic Sequence Test

7. Testing Item:

Temperature & Humidity Cycle  
 Test Temperature & Humidity Power On/Off Test

8. Additional Test Peripheral:

Configuration	Model
Test Software	QAPlus 5.5
Test Fixture	Power on/off(110V) Fixture

8. Test Environment:

Temperature: 20 ± 2  
 Humidity: 60 ± 20%RH

9. Sample Configuration & Quantity Under Test:

Quantity: 1  
 Sample Configuration:

CPU	Onboard STPC Client DX-66
DRAM	EDO SO-DIMM 16MB NEC D425V18165LG5-A60-7JF
System BIOS Version	PCM4335 Rev 1.3 (AMI BIOS)
Chipset	STPC Client
VGA Chipset	C&T 69000
I/O Chipset	Winbond W83977F. Fully 16-bit I/O ` decoded
Heat sink (P/N)	M164335000

Heat sink (P/N): **M164335000** Picture



10. Test Result:

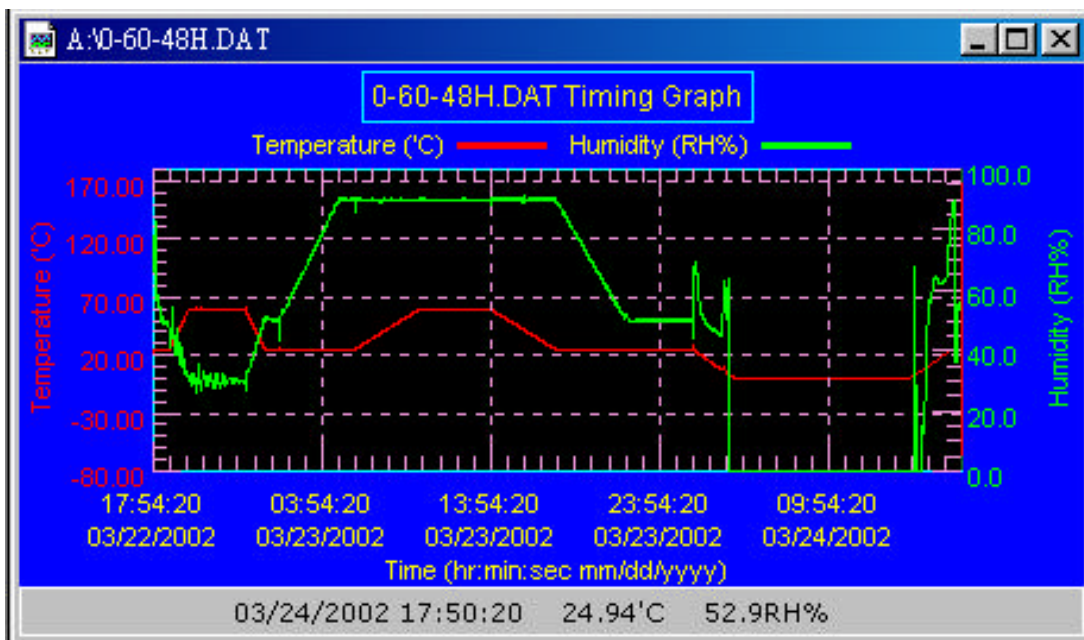
Standard	Description	Result
IEC 68-2-61	Temperature & Humidity Cycle Test (Run QAPLus 5.5)	Pass
IEC 68-2-30	Temperature & Humidity Power On/Off Test	Pass

11. Temperature & Humidity Power On/Off Test

11-1 Testing Specification:

Step	Temperature ( )	Humidity (%RH)	Duration (HH:MM)
1	25	50	00:30
2	25	50	00:30
3	60	30	01:10
4	60	30	03:20
5	25	50	01:10
6	25	50	00:50
7	25	90	03:30
8	25	90	01:00
9	60	90	03:53
10	60	90	04:07
11	25	90	03:53
12	25	50	04:07
13	25	50	03:30
14	25	50	00:30
15	0	0	02:30
16	0	0	10:30
17	25	50	02:30
18	25	50	00:30

11-2 Test Curve:



12. Temperature & Humidity Cycle Test:

11-1 Testing Specification:

Step	Temperature ( )	Humidity (%RH)	Duration (HH:MM)
1	25	50	00:30
2	25	50	00:30
3	25	90	01:00
4	25	90	00:30
5	60	90	03:30
6	60	90	03:00
7	0	0	04:50
8	0	0	05:23
9	25	50	01:47
10	25	50	03:00

11-2 Test Curve:

