



# OPD-212A

## Environment Test Report

Report NO : 03P020005

Issued by:

/

03 / 14 / 2003

*Rex Chang*  
Test Engineer

Date

Reviewed by:

/

03 / 14 / 2003

*Wayne Chen*  
A.V.P

Date

<b>1. Test item list</b> -----	<b>2</b>
<b>2 Temperature cycle operation test</b> -----	<b>3</b>
<b>3. High temperature / Humidity storage test</b> -----	<b>5</b>
<b>4. Low temperature storage test</b> -----	<b>6</b>
<b>5. Humidity test</b> -----	<b>7</b>
<b>6. Cold start test</b> -----	<b>8</b>

<b>Num</b>	<b>Item</b>	<b>Spec</b>
1.	Control Box :	AEC-6000 (GENE-6320)
2.	LCD panel :	OPD-212A
	1.LCD	12.1" TOSHIBA LTM12C2890
	2.Power Adapter	EDAC 100/240V.12V.5A.60W.DC.With Lock EA1050A(13)
	3.A/D board	AAEON ADB-100A
	4.Inverter	SI JING HARNG PS-D3580-02

OPD-212A

**Test Date:** 02-18~20-2003

**Test Product:** OPD-212A 12.1" LCD flat panel monitor.

**Test Site:** AAEON DV Internal Lab.

**Performed By :** Rex Chang

**Test Standard :**

Reference IEC 68-2-61 Testing procedures  
 Test Z/ABD : Climatic Sequence Test

**Test Equipment:**

Programmable Temperature & Humidity Chamber  
 K.SON. INS. TECH. CORP.  
 Model : THS-D4H+-100  
 Date of Calibration : 06/07/02  
 Serial Number: 1241

**Temperature Measurement :**

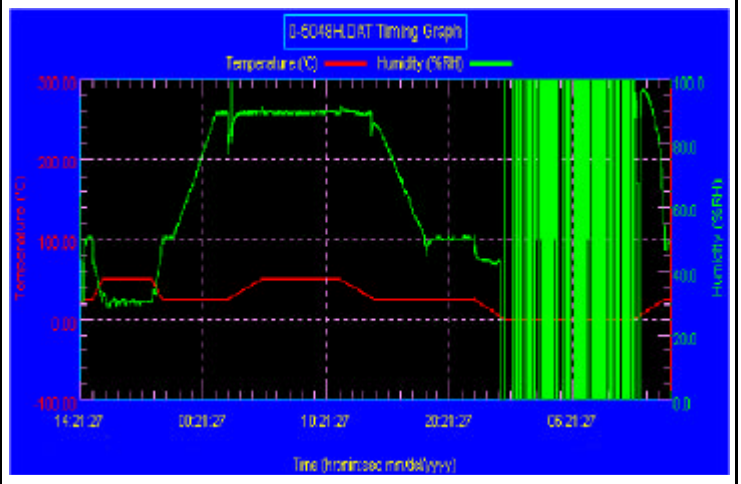
20 Channel Thermal Recorder:  
 YOKOGAWA Inc,  
 Model : DA100-13-1D  
 Date of Calibration : 01/03/03  
 Serial Number: 12A323190

**Temperature & Humidity Cycle Test:**

**Testing Specification**

Step	Temperature ( )	Humidity (%RH)	Duration (HH:MM)
1	25	50	00:30
2	25	50	00:30
3	50	30	00:50
4	50	30	04:00
5	25	50	00:50
6	25	50	00:50
7	25	90	03:30
8	25	90	01:00
9	50	90	02:46
10	50	90	06:21
11	25	90	02:46
12	25	50	04:07
13	25	50	03:30
14	25	50	00:30
15	0	0	02:30
16	0	0	10:30
17	25	50	02:30
18	25	50	00:30

**Test Curve:**



**Sample Configuration & Quantity Under Test:**

Using one OPD-212A 12.1" LCD flat panel monitor.

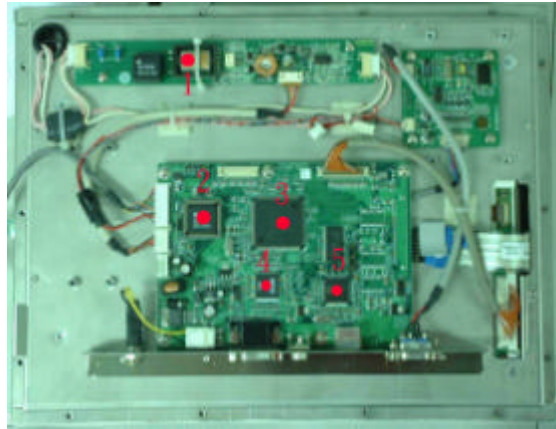
Control Box : AEC-6000B ( GENE-6320 )

OPD-212A

**Temperature Recorder:**

Measuring Accelerometer Position:

OPD-212A

**Thermal profile data :**

OPD-212A

Point	Temp. Stage		
	50	25	0
1.Inverter	79.8	55.6	38.3
2.ALi M6759 (U3)	68.7	44.9	20.4
3.TOPRO TP6740SVQ (U5)	77.9	54.7	30.3
4.ANALOG DEVICES AD9883A KST-110 (U11)	76.7	52.7	27.1
5.PHILIPS SAA7114H (U12)	69.3	45.3	13.8
6.Chamber Air	50.9	25.8	0.9

**Test Result :****Passed.**

The OPD-212A 12.1" LCD Monitor meets temperature cycle test.

OPD-212A

**Test Date:** 03-07~11-2003**Test Product:** OPD-212A 12.1" LCD flat panel monitor.**Test Site:** AAEON DV Internal Lab.**Performed By :** Rex Chang**Test Standard :** Reference IEC 68-2-56 Testing procedures  
Test Cb : Damp Heat Steady State Test (Non-operation)**Test Standard :** Reference IEC 68-2-2 Testing procedures  
Test Bb : Dry Heat Test (Non-operation)**Test Equipment:**

Programmable Temperature &amp; Humidity Chamber

K.SON. INS. TECH. CORP.

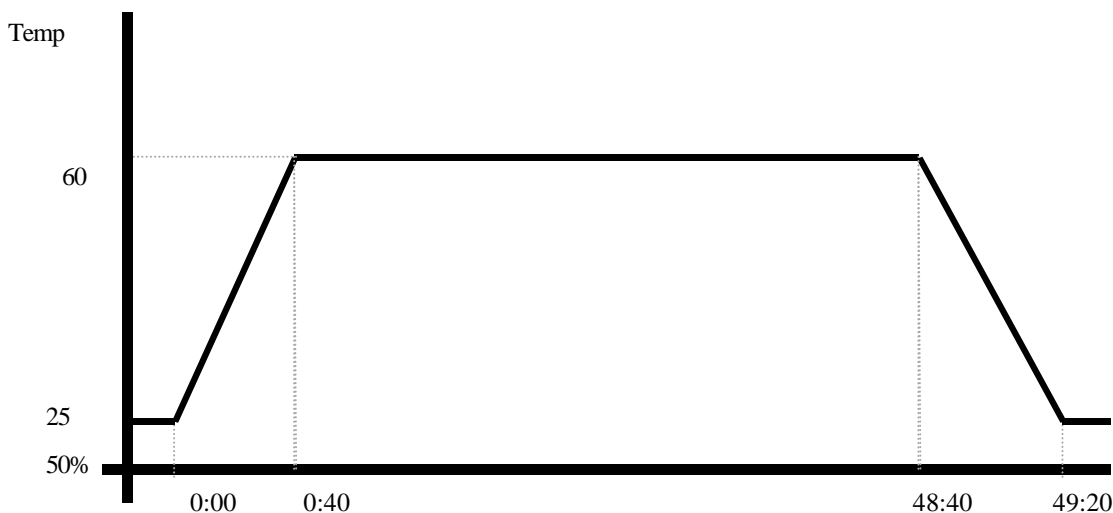
Model : THS-D4L+-100

Date of Calibration : 10/28/02

Serial Number: 2582

**Testing Item:**

1. Test Temperature: 60
2. Test Times: 48Hrs
3. Test Software: Windows media Player (Video test soft-MPEG form HDD)
4. Test Environment Curve:

**Sample Configuration & Quantity Under Test:**

Quantity: 1 (OPD-212 12.1" LCD Monitor)

**Test Result:****Passed.**

The OPD-212A 12.1" LCD Monitor meets High temp/Humidity storage test.



# Low temperature storage test

Report NO. 03P020005

OPD-212A

**Test Date:** 02-22~21-2003

**Test Product:** OPD-212A 12.1" LCD flat panel monitor.

**Test Site:** AAEON DV Internal Lab.

**Performed By :** Rex Chang

**Test Standard :** Reference IEC 68-2-1  
Testing procedures Test Ab : Cold Test (Non-operation)

## Test Equipment:

Programmable Temperature & Humidity Chamber

K.SON. INS. TECH. CORP.

Model : THS-D4H+-100

Date of Calibration : 10/28/02

Serial Number: 2582

## Testing Item:

1. Test Temperature : -20
2. Test Times : 48Hrs
3. Test Software : Windows media Player (Video test soft-MPEG form HDD)
4. Test Environment Curve :



## Sample Configuration & Quantity Under Test:

Quantity: 1 (OPD-212 12.1" LCD Monitor)

## Test Result:

**Passed.**

The OPD-212A 12.1" LCD Monitor meets Low temperature storage test

**OPD-212A****Test Date:** 02-27~03-01-2003**Test Product:** OPD-212A 12" LCD flat panel monitor.**Test Site:** AAEON DV Internal Lab.**Performed By :** Rex Chang**Test Standard :** Reference IEC 68-2-30 Testing procedures  
Test Db : Humidity test (Non-operation)**Test Equipment:**

Programmable Temperature &amp; Humidity Chamber

K.SON. INS. TECH. CORP.

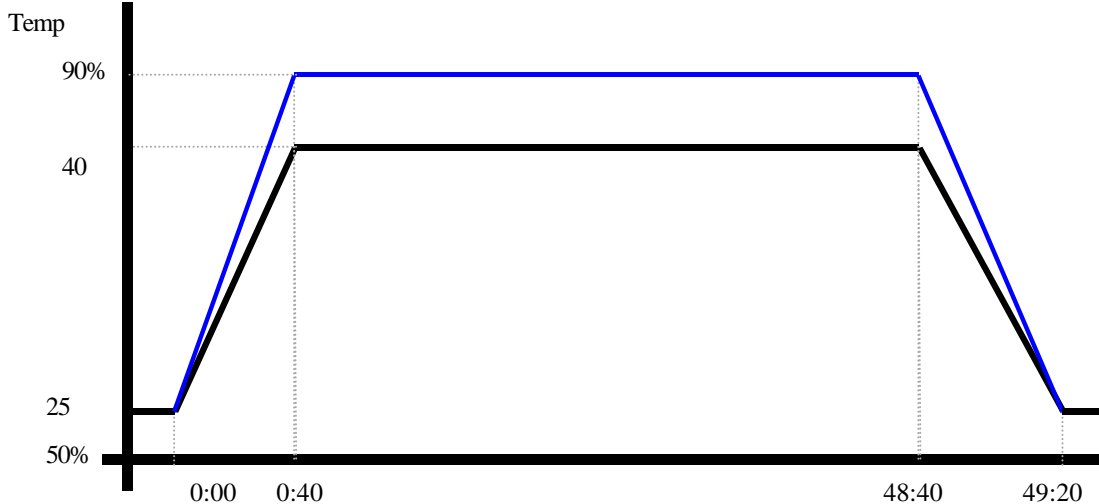
Model : THS-D4H+-100

Date of Calibration : 06/10/02

Serial Number: 1241

**Testing Item:**

1. Test Temperature: 40
2. Test Humidity : 90%RH
3. Test Times: 48Hrs
4. Test Software : Windows media Player (Video test soft-MPEG form HDD)
5. Test Environment Curve:

**Humidity %****Sample Configuration & Quantity Under Test:**

Quantity: 1 (OPD-212A 12.1" LCD )

**Test Result:****Passed.**

The OPD-212A 12.1" LCD Monitor meets Humidity test

**OPD-212A****Test Date:** 02-12-2003**Test Product:** OPD-212A 12.1" LCD flat panel monitor.**Test Site:** AAEON DV Internal Lab.**Performed By :** Rex Chang**Test Standard :** Reference IEC 68-2-1 Testing procedures  
Test Ab : Cold Test**Test Equipment:**

Programmable Temperature &amp; Humidity Chamber

K.SON. INS. TECH. CORP.

Model : THS-D4H+-100

Date of Calibration : 06/07/02

Serial Number: 1241

**Test Condition :**

1. Test Temperature : 0

2. Test Times : 5Hrs

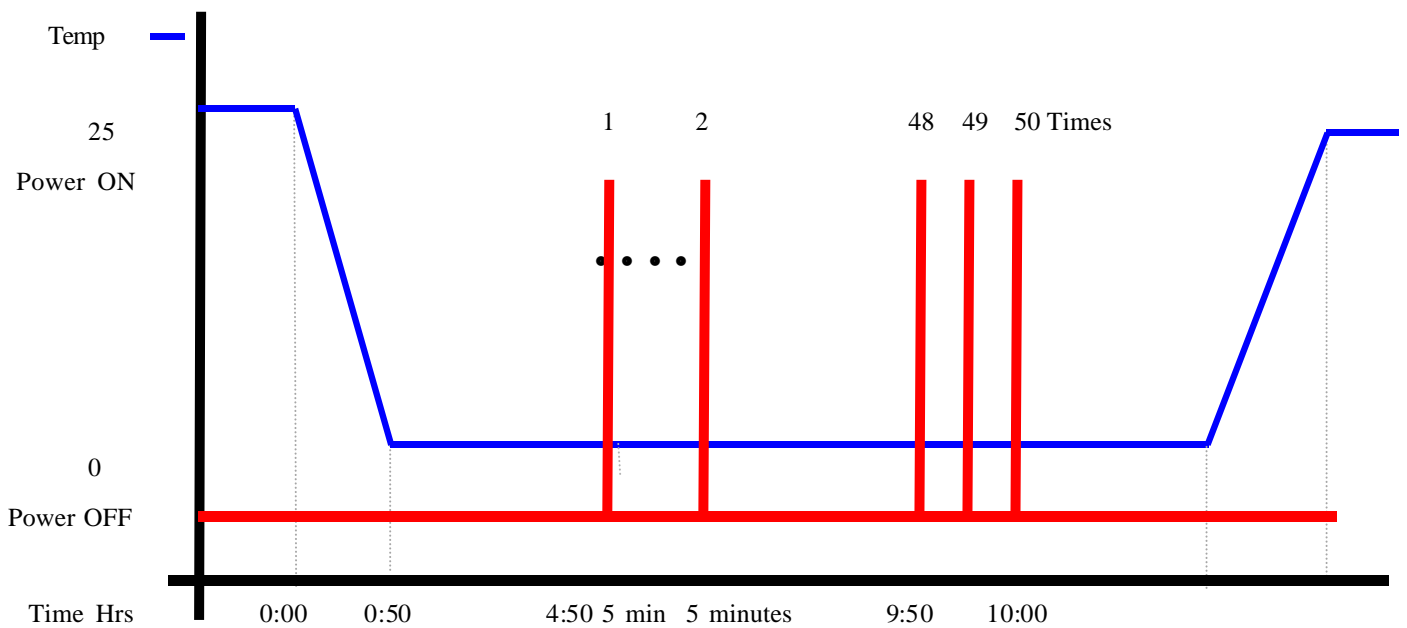
Power off 4 hours before first time power on

Power off to next power on between 10 minutes

3. Number of test : 50 times

4. Test Software : Windows98SE

5. Test Environment Curve :





OPD-212A

**Sample Configuration & Quantity Under Test:**

Quantity:1 (OPD-212 12.1" LCD Monitor)

**Test Result:**

**Passed.**

The OPD-212A 12.1" LCD Monitor meets Cold start test