



OPD-217A

Environment Test Report

Report NO : 03P020007

Issued by:

/

03/18 /2003

Rex Chang
Test Engineer

Date

Reviewed by:

/

03/18/2003

Wayne Chen
A.V.P

Date

OPD-217A

1. <i>Test item list</i> -----	2
2. <i>Temperature cycle operation test</i> -----	3
3. <i>High temperature storage test</i> -----	4
4. <i>Low temperature storage test</i> -----	6
5. <i>Humidity test</i> -----	7
6. <i>Cold start test</i> -----	8

Sample 1

Num	Item	Spec
1.	Control Box :	AEC-6000 ver.B (GENE-6320)
2.	LCD panel :	OPD-217A
	1.LCD	HYUNDAI HT17E12-200 17" TFT 1280x1024
	2.Power Adapter	EDAC 100/240V.12V.5A.60W.DC.With Lock EA1050A(13)
	3.A/D board	AAEON ADB-100A
	4.Inverter	ATBEL QF132V1.16 : For HYUNDAI 17" TFT LCD (4LAMPS)

Sample 2

Num	Item	Spec
1.	Control Box :	AEC-6000 ver.B (GENE-6320)
2.	LCD panel :	OPD-217A
	1.LCD	AU M170EN05 17" TFT 1280x1024.
	2.Power Adapter	EDAC 100/240V.12V.5A.60W.DC.With Lock EA1050A(13)
	3.A/D board	AAEON ADB-100A
	4.Inverter	ATBEL QF132V1.00 : For AU 17" TFT LCD (4LAMPS)

OPD-217A

Test Date: 02-18~20-2003

Test Product: OPD-217A 17" LCD (Touch Screen: Elo) flat panel monitor.

Test Site: AAEON DV Internal Lab.

Performed By : Rex Chang

Test Standard :

Reference IEC 68-2-61 Testing procedures
 Test Z/ABD : Climatic Sequence Test

Test Equipment:

Programmable Temperature & Humidity Chamber
 K.SON. INS. TECH. CORP.
 Model : THS-D4H+-100
 Date of Calibration : 06/07/02
 Serial Number: 1241

Temperature Measurement :

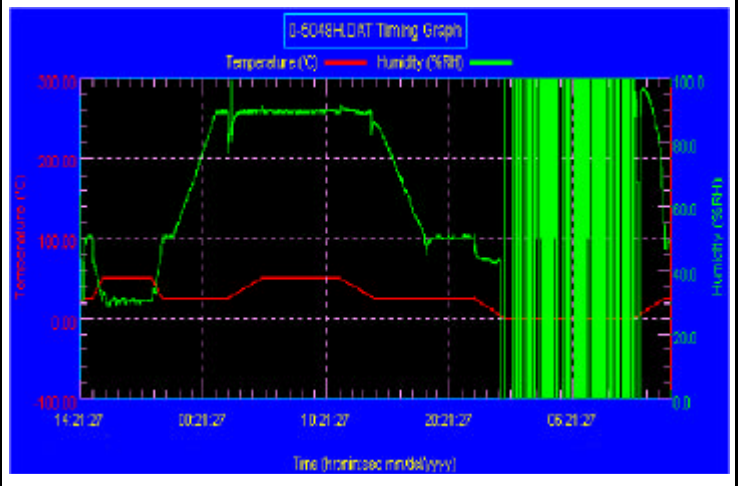
20 Channel Thermal Recorder:
 YOKOGAWA Inc,
 Model : DA100-13-1D
 Date of Calibration : 01/03/03
 Serial Number: 12A323190

Temperature & Humidity Cycle Test:

Testing Specification

Step	Temperature ()	Humidity (%RH)	Duration (HH:MM)
1	25	50	00:30
2	25	50	00:30
3	50	30	00:50
4	50	30	04:00
5	25	50	00:50
6	25	50	00:50
7	25	90	03:30
8	25	90	01:00
9	50	90	02:46
10	50	90	06:21
11	25	90	02:46
12	25	50	04:07
13	25	50	03:30
14	25	50	00:30
15	0	0	02:30
16	0	0	10:30
17	25	50	02:30
18	25	50	00:30

Test Curve:



Sample Configuration & Quantity Under Test:

Using one OPD-217A 17" LCD flat panel monitor.

Control Box : AEC-6000 ver.B(GENE-6320)

OPD-215A

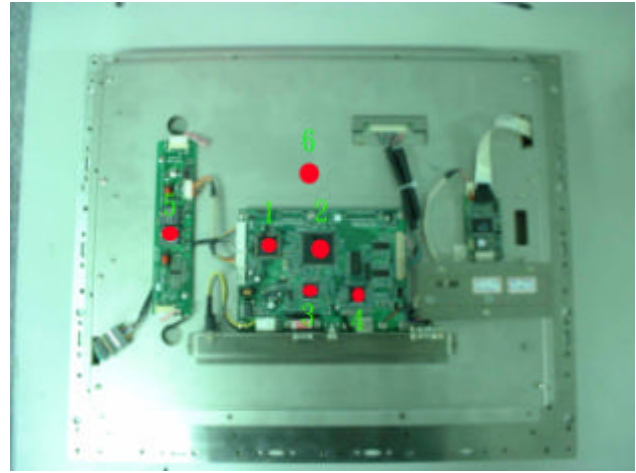
Temperature Recorder:

Measuring Accelerometer Position:

OPD –217A (HYUNDAI HT17E12-200 17" TFT LCD)



OPD –217A (AU M170EN05 17" TFT LCD)



Thermal profile data :

OPD –217A (HYUNDAI HT17E12-200 17" TFT LCD)

Point	Temp. Stage		
	50	25	0
1.ALi M6759 (U3)	68.6	43.6	18.3
2.TOPRO TP6740SVQ (U5)	80.1	56.0	31.3
3.ANALOG DEVICES AD9883A KST-110 (U11)	76.3	51.4	26.0
4.PHILIPS SAA7114H (U12)	67.1	42.0	16.0
5.Inverter	74.7	54.5	29.3
6.Inside air temperature	59.0	33.7	8.2
7.Chamber Air Temperature	50.9	25.8	0.9

OPD –217A (AU M170EN05 17" TFT LCD)

Point	Temp. Stage		
	50	25	0
1.ALi M6759 (U3)	68.4	43.5	18.2
2.TOPRO TP6740SVQ (U5)	80.2	55.8	31.1
3.ANALOG DEVICES AD9883A KST-110 (U11)	76.0	51.5	26.2
4.PHILIPS SAA7114H (U12)	67.0	41.6	15.8
5.Inverter	74.7	54.4	29.2
6.Inside air temperature	58.8	33.6	8.0
7.Chamber Air Temperature	50.9	25.8	0.9

Test Result :

Sample Configuration & Quantity Under Test:

Quantity : 2

Sample 1 : OPD-217A (HYUNDAI HT17E12-200 17" TFT LCD)

Sample 2 : OPD-217A (AU M170EN05 17" TFT LCD)

Passed.

The OPD-217A 17" LCD Monitor meets temperature cycle test.

OPD-217A**Test Date:** 02-25~27-2003**Test Product:** OPD-217A 17" LCD flat panel monitor.**Test Site:** AAEON DV Internal Lab.**Performed By :** Rex Chang**Test Standard :** Reference IEC 68-2-2 Testing procedures
Test Bb : Dry Heat Test (Non-operation)**Test Equipment:**

Programmable Temperature & Humidity Chamber

K.SON. INS. TECH. CORP.

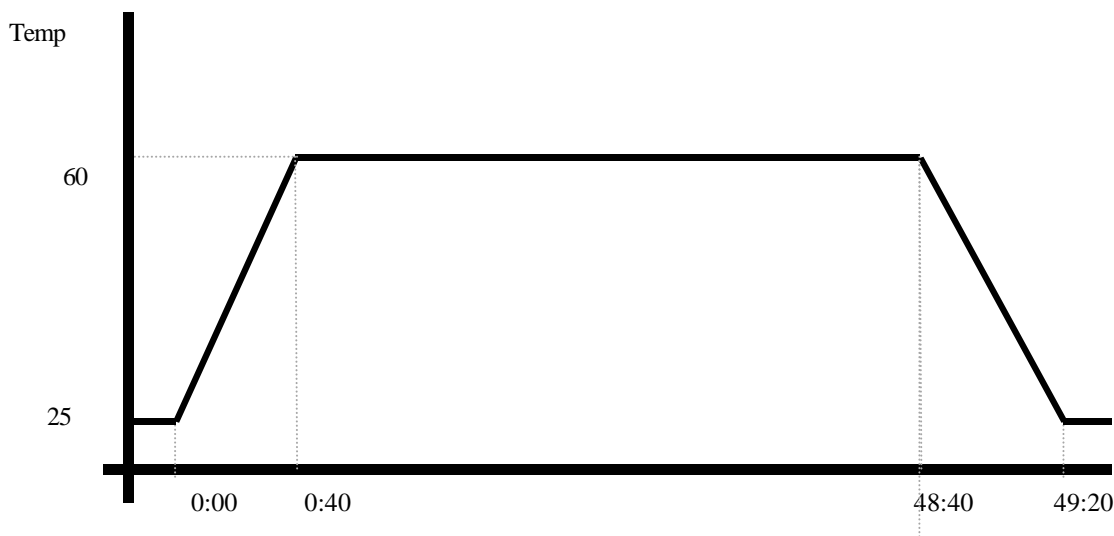
Model : THS-D4L+-100

Date of Calibration : 10/28/02

Serial Number: 2582

Testing Item:

1. Test Temperature: 60
2. Test Times: 48Hrs
3. Test Software: Windows media Player (Video test soft-MPEG form HDD)
4. Test Environment Curve:

**Sample Configuration & Quantity Under Test:**

Quantity: 2

Sample 1 : OPD-217A (HYUNDAI HT17E12-200 17" TFT LCD)

Sample 2 : OPD-217A (AU M170EN05 17" TFT LCD)

Test Result:**Passed.**

The OPD-217A 17" LCD Monitor meets High temp storage test.

OPD-217A**Test Date:** 02-28~03-02-2003**Test Product:** OPD-217A 17" LCD flat panel monitor.**Test Site:** AAEON DV Internal Lab.**Performed By :** Rex Chang**Test Standard :** Reference IEC 68-2-1
Testing procedures Test Ab : Cold Test (Non-operation)**Test Equipment:**

Programmable Temperature & Humidity Chamber

K.SON. INS. TECH. CORP.

Model : THS-D4H+-100

Date of Calibration : 10/28/02

Serial Number: 2582

Testing Item:

1. Test Temperature : -20
2. Test Times : 48Hrs
3. Test Software : Windows media Player (Video test soft-MPEG form HDD)
4. Test Environment Curve :

**Sample Configuration & Quantity Under Test:**

Quantity: 2

Sample 1 : OPD-217A (HYUNDAI HT17E12-200 17" TFT LCD)

Sample 2 : OPD-217A (AU M170EN05 17" TFT LCD)

Test Result:**Passed.**

The OPD-217A 17" LCD Monitor meets Low temperature storage test

OPD-217A

Test Date: 03-14-2003**Test Product:** OPD-217A 17" LCD flat panel monitor.**Test Site:** AAEON DV Internal Lab.**Performed By :** Rex Chang**Test Standard :** Reference IEC 68-2-30 Testing procedures
Test Db : Humidity**Test Equipment:**

Programmable Temperature & Humidity Chamber

K.SON. INS. TECH. CORP.

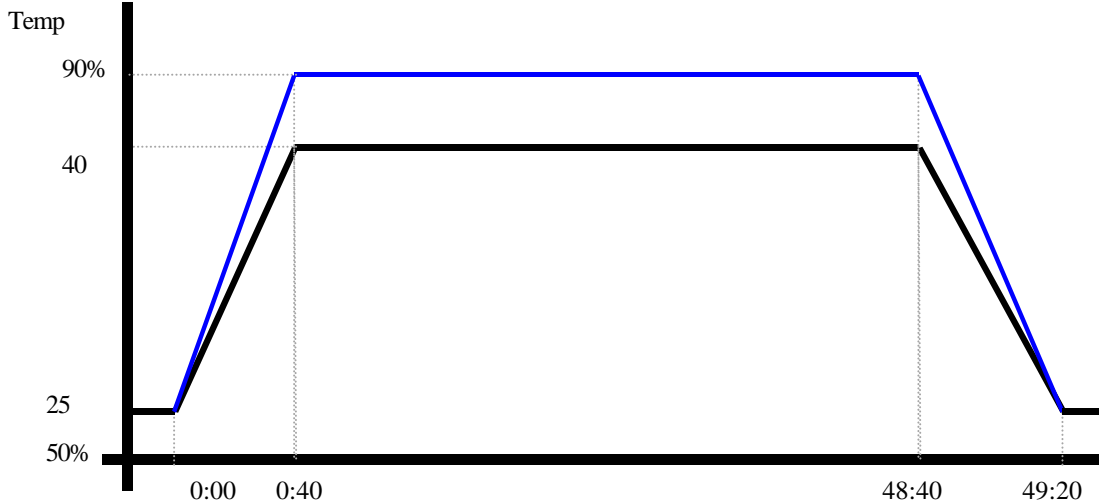
Model : THS-D4H+-100

Date of Calibration : 06/07/02

Serial Number: 1241

Testing Item:

1. Test Temperature: 40
2. Test Humidity : 90%RH
3. Test Times: 48Hrs
4. Test Software : Windows media Player (Video test soft-MPEG form HDD)
5. Test Environment Curve:

Humidity %**Sample Configuration & Quantity Under Test:**

Quantity: 2

Sample 1 : OPD-217A (HYUNDAI HT17E12-200 17" TFT LCD)

Sample 2 : OPD-217A (AU M170EN05 17" TFT LCD)

Test Result:**Passed.**

The OPD-217A 17" LCD Monitor meets Low temperature storage test

OPD-217A

Test Date: 03-17-2003

Test Product: OPD-217A 17" LCD flat panel monitor.

Test Site: AAEON DV Internal Lab.

Performed By : Rex Chang

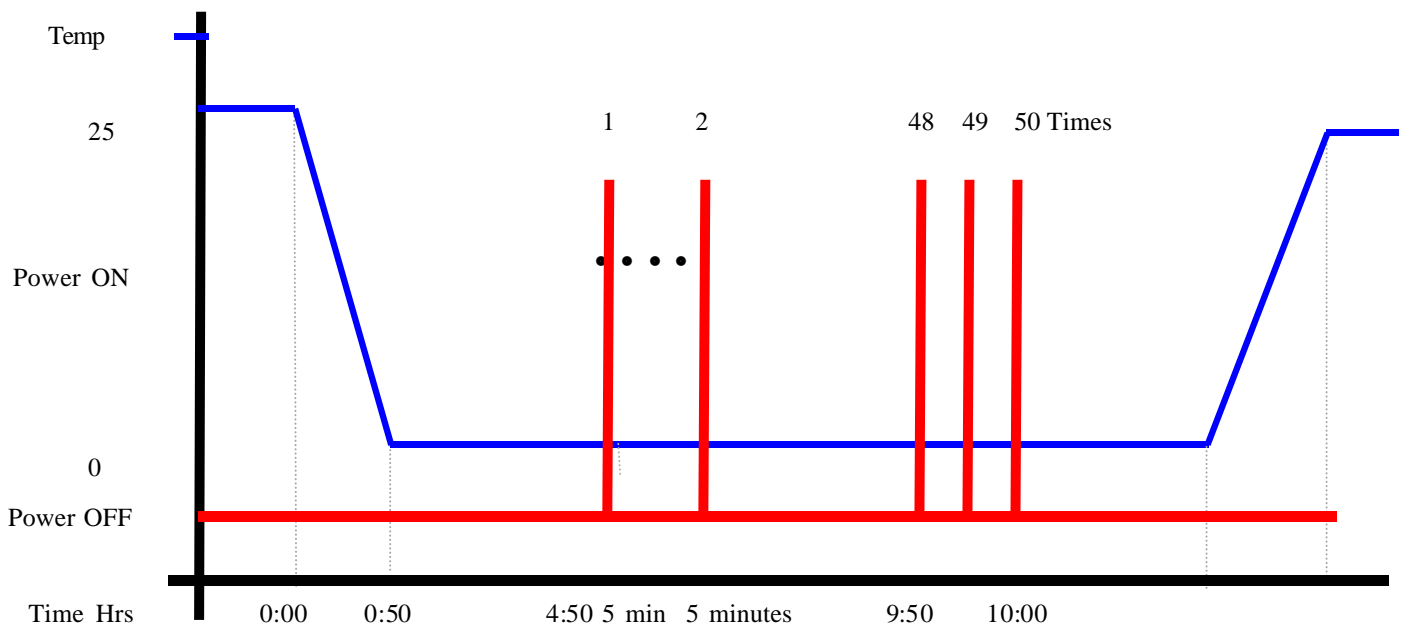
Test Standard : Reference IEC 68-2-1 Testing procedures
Test Ab : Cold Test

Test Equipment:

Programmable Temperature & Humidity Chamber
K.SON. INS. TECH. CORP.
Model : THS-D4H+-100
Date of Calibration : 06/07/02
Serial Number: 1241

Test Condition :

1. Test Temperature : 0
2. Test Times : 5Hrs
Power off 4 hours before first time power on
Power off to next power on between 10 minutes
3. Number of test : 50 times
4. Test Software : Windows98SE
5. Test Environment Curve :



OPD-217A

Sample Configuration & Quantity Under Test:

Quantity: 2

Sample 1 : OPD-217A (HYUNDAI HT17E12-200 17" TFT LCD)

Sample 2 : OPD-217A (AU M170EN05 17" TFT LCD)

Test Result:

Passed.

The OPD-217A 17" LCD Monitor meets Cold start test