



1. <i>Test item list</i> -----	2
2. <i>Temperature cycle operation test</i> -----	3
3. <i>High temperature / Humidity storage test</i> -----	5
4. <i>Low temperature storage test</i> -----	6
5. <i>Humidity test</i> -----	7
6. <i>Cold start test</i> -----	8

Num	Item	Spec
1.	Control Box :	Onyx-158S(PCM-6898)
	1.CPU	Intel Pentium 1GHz(133*7.5)
	2.Memory	ELPIDA D45128841G5-A75-9JF PC133 SDRAM 256MB
	3.CPU Cooler	1759200152
	4.HDD	IBM Travelstar™ IC25N020ATCS04-0 20GB
	5. Power	POWERADD PPS100-31(71B)
2.	6. LCD	15" FUJITSU FLC38XGC6V-06
	7.Inverter	SI JING HARNG 8592F-01

CPU Cooler



Onyx-158S

**Test Date:** 02-27~03-02-2003

**Test Product:** Onyx-158S 15" LCD PC.

**Test Site:** AAEON DV Internal Lab.

**Performed By :** Rex Chang

**Test Standard :**

Reference IEC 68-2-61 Testing procedures  
Test Z/ABD : Climatic Sequence Test

**Test Equipment:**

Programmable Temperature & Humidity Chamber  
K.SON. INS. TECH. CORP.  
Model : THS-D4H+-100  
Date of Calibration : 06/10/02  
Serial Number: 1241

**Temperature Measurement :**

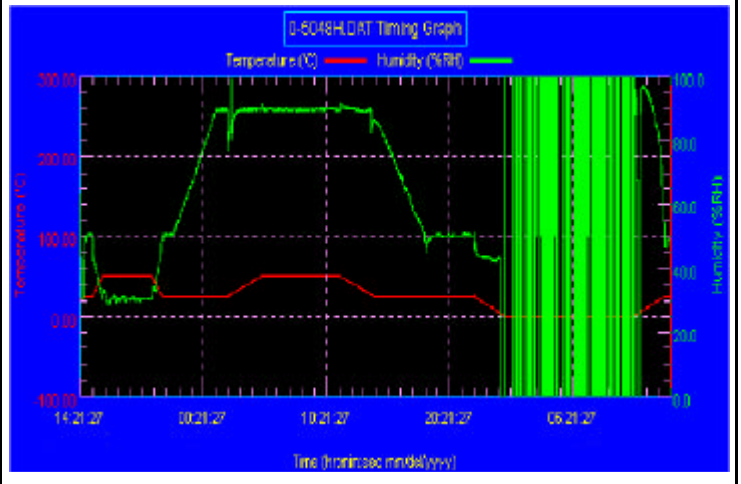
20 Channel Thermal Recorder:  
YOKOGAWA Inc,  
Model : DA100-13-1D  
Date of Calibration : 01/03/03  
Serial Number: 12A323190

**Temperature & Humidity Cycle Test:**

**Testing Specification**

Step	Temperature ( )	Humidity (%RH)	Duration (HH:MM)
1	25	50	00:30
2	25	50	00:30
3	50	30	00:50
4	50	30	04:00
5	25	50	00:50
6	25	50	00:50
7	25	90	03:30
8	25	90	01:00
9	50	90	02:46
10	50	90	06:21
11	25	90	02:46
12	25	50	04:07
13	25	50	03:30
14	25	50	00:30
15	0	0	02:30
16	0	0	10:30
17	25	50	02:30
18	25	50	00:30

**Test Curve:**



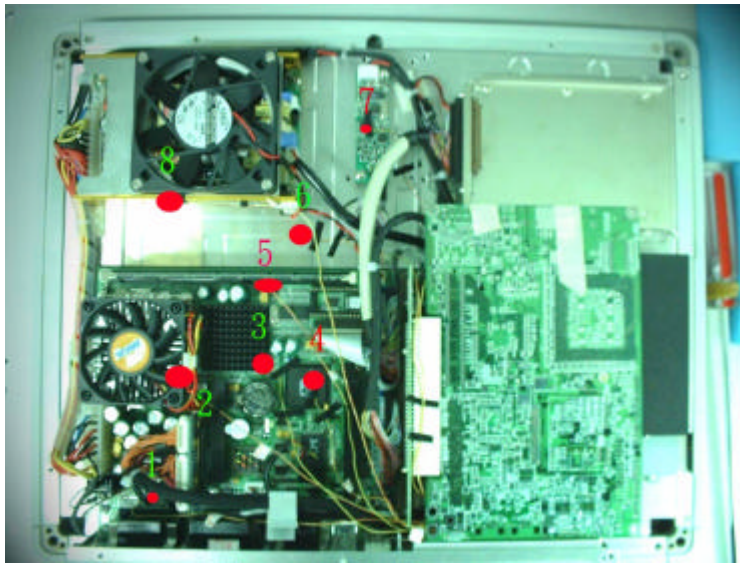
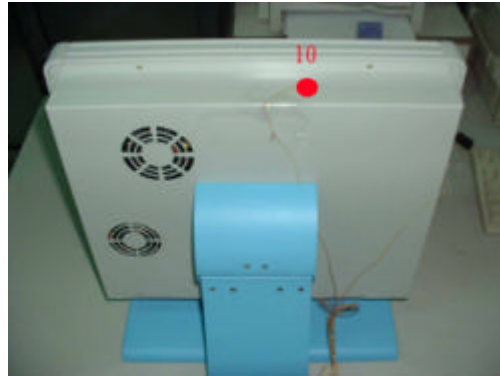
**Sample Configuration & Quantity Under Test:**

Using one Onyx-158S 15" LCD PC.

Onyx-158S

Temperature Recorder:

Measuring Accelerometer Position:



Thermal profile data :

**Onyx-158S 15" LCD Panel PC**

Point	Temp. Stage		
	50	25	0
1.1611A AC97 Codec	81.2	55.8	30.0
2.Intel Pentium 1GHz CPU	74.2	48.2	21.9
3.VIA VT8604 Chipset	69.8	44.3	18.1
4.VIA VT82C686B Chipset	71.5	45.7	19.6
5.Memory	68.2	42.6	16.7
6.Control Box. Inside air temperature	65.6	40.7	15.3
7.Inverter	65.5	40.7	15.9
8.Power Heat Sink	68.3	43.6	18.2
9.HDD	70.8	47.5	24.1
10.Control Box. External Surface	56.1	31.6	6.6
11.Chamber air temperature	50.4	25.4	0.3

Sample Configuration & Quantity Under Test:

Quantity: 1 (Onyx-158S 15" LCD PC)

Test Result :

**Passed.**

The Onyx-158S 15" LCD Panel PC meets temperature cycle test.

**Onyx-158S****Test Date:** 03-07~11-2003**Test Product:** The Onyx-158S 15" LCD PC.**Test Site:** AAEON DV Internal Lab.**Performed By :** Rex Chang**Test Standard :** Reference IEC 68-2-2 Testing procedures  
Test Bb : Dry Heat Test (Non-operation)**Test Equipment:**

Programmable Temperature &amp; Humidity Chamber

K.SON. INS. TECH. CORP.

Model : THS-D4L+-100

Date of Calibration : 10/28/02

Serial Number: 2582

**Testing Item:**

1. Test Temperature: 60
2. Test Times: 48Hrs
3. Test Software: Windows media Player (Video test soft-MPEG form HDD)
4. Test Environment Curve:

**Sample Configuration & Quantity Under Test:**

Quantity: 1 (Onyx-158S 15" LCD PC)

**Test Result:****Passed.**

The Onyx-158S 15" LCD PC meets High temperature storage test.

**Onyx-158S****Test Date:** 03-21~23-2003**Test Product:** Onyx-158S 15" LCD PC.**Test Site:** AAEON DV Internal Lab.**Performed By :** Rex Chang**Test Standard :** Reference IEC 68-2-1  
Testing procedures Test Ab : Cold Test (Non-operation)**Test Equipment:**

Programmable Temperature &amp; Humidity Chamber

K.SON. INS. TECH. CORP.

Model : THS-D4H+-100

Date of Calibration : 10/28/02

Serial Number: 2582

**Testing Item:**

1. Test Temperature : -20
2. Test Times : 48Hrs
3. Test Software : Windows media Player (Video test soft-MPEG form HDD)
4. Test Environment Curve :

**Sample Configuration & Quantity Under Test:**

Quantity: 1 (Onyx-158S 15" LCD PC)

**Test Result:****Passed.**

The Onyx-158S 15" LCD PC meets Low temperature storage test

**Onyx-158S****Test Date:** 03-24~03-26-2003**Test Product:** Onyx-158S 15" LCD PC.**Test Site:** AAEON DV Internal Lab.**Performed By :** Rex Chang**Test Standard :** Reference IEC 68-2-30 Testing procedures  
Test Db : Humidity test (Non-operation)**Test Equipment:**

Programmable Temperature &amp; Humidity Chamber

K.SON. INS. TECH. CORP.

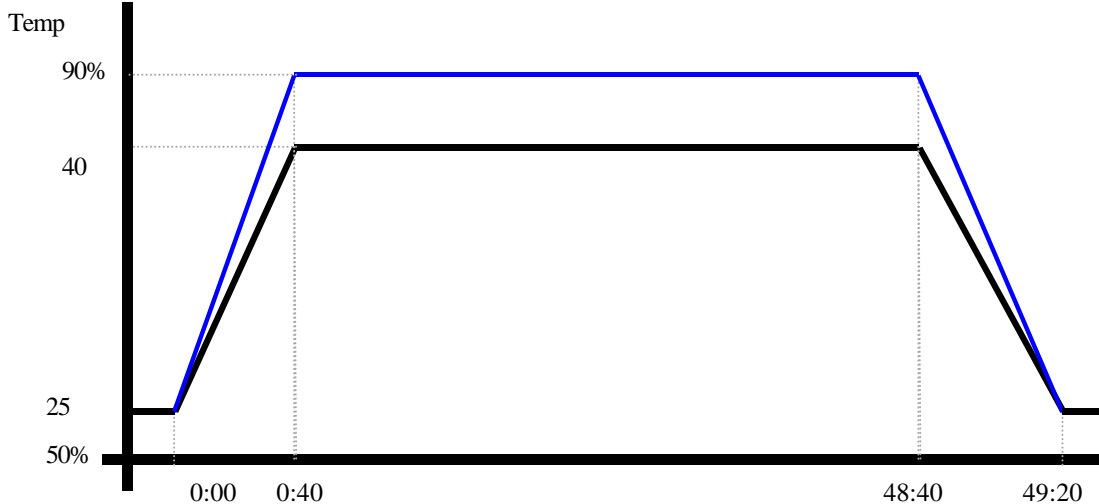
Model : THS-D4H+-100

Date of Calibration : 06/10/02

Serial Number: 1241

**Testing Item:**

1. Test Temperature: 40
2. Test Humidity : 90%RH
3. Test Times: 48Hrs
4. Test Software : Windows media Player (Video test soft-MPEG form HDD)
5. Test Environment Curve:

**Humidity %****Sample Configuration & Quantity Under Test:**

Quantity: 1 (Onyx-158S 15" LCD PC)

**Test Result:****Passed.**

The Onyx-158S 15" LCD PC meets Humidity test

**Onyx-158S****Test Date:** 03-25-2003**Test Product:** Onyx-158S 15" LCD PC.**Test Site:** AAEON DV Internal Lab.**Performed By :** Rex Chang**Test Standard :** Reference IEC 68-2-1 Testing procedures  
Test Ab : Cold Test**Test Equipment:**

Programmable Temperature &amp; Humidity Chamber

K.SON. INS. TECH. CORP.

Model : THS-D4H+-100

Date of Calibration : 06/07/02

Serial Number: 1241

**Test Condition :**

1. Test Temperature : 0

2. Test Times : 5Hrs

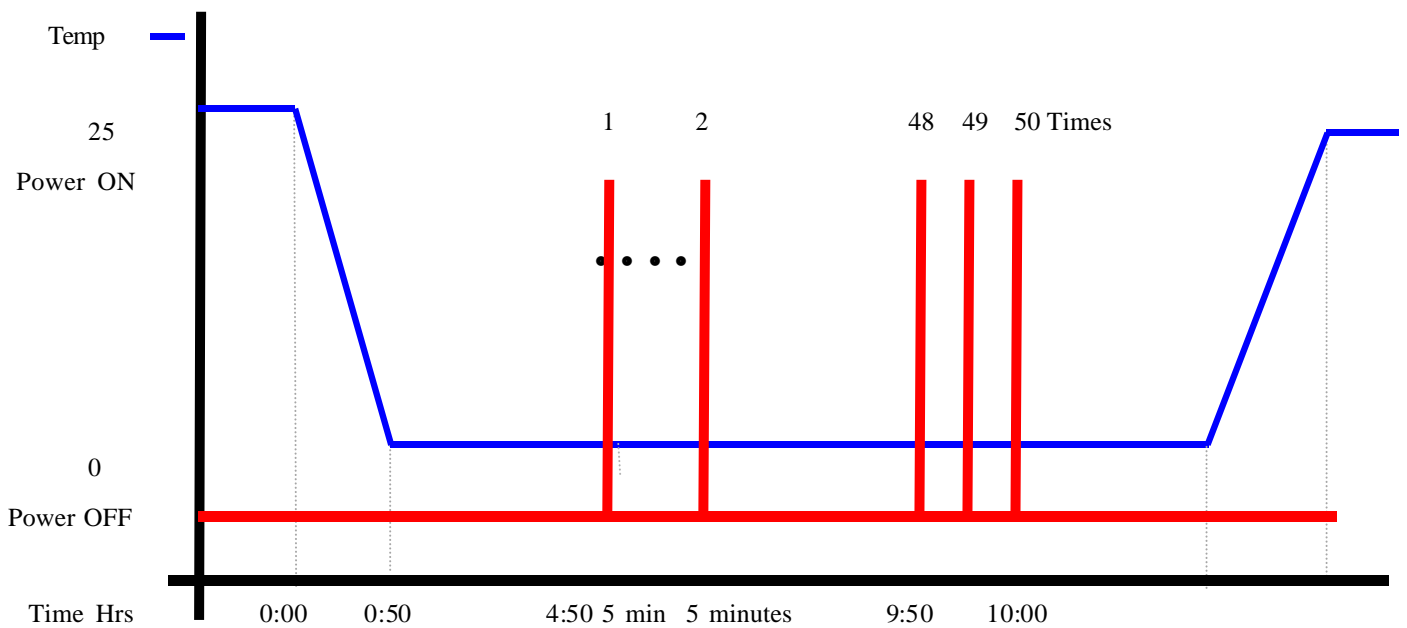
Power off 4 hours before first time power on

Power off to next power on between 10 minutes

3. Number of test : 50 times

4. Test Software : Windows98SE

5. Test Environment Curve :







## Cold Start test

Report NO. 03P020008

---

Onyx-158S

**Sample Configuration & Quantity Under Test:**

Quantity:1 (Onyx-158S 15" LCD PC)

**Test Result:**

Passed.

The Onyx-158S 15" LCD PC meets Cold start test