



Onyx-151-D

(Thermal)

Environment Test Report

Report NO : 03P020003

Issued by:

/

03/05 /2003

Rex Chang
Test Engineer

Date

Reviewed by:

/

03/05/2003

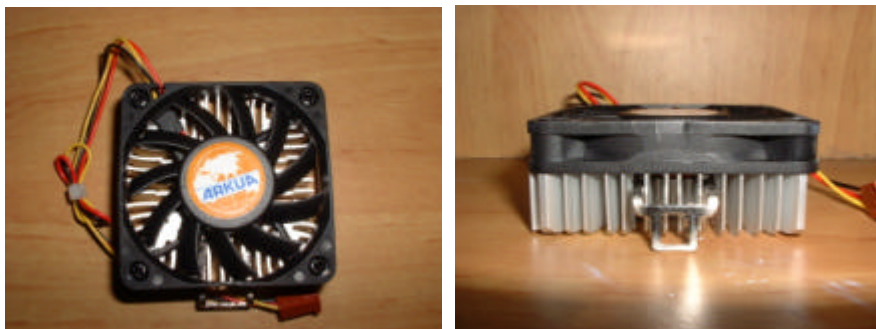
Wayne Chen
A.V.P

Date

1. *Test item list* ----- 2
2. *Temperature cycle operation test* ----- 3

Num	Item	Spec
1.	Control Box :	Onyx-151-D (PCM-6890B)
	1.CPU	Intel Pentium 850MHz
	2.Memory	ELPIDA D45128841G5-A75-9JF PC133 SDRAM 256MB
	3.CPU Cooler	1759200152
	4.HDD	IBM Travelstar™ IC25N020ATCS04-0 20GB
	5. Power	POWERADD PPS100-31(71B)
2.	6. LCD	15" FUJITSU FLC38XGC6V-06
	7.Inverter	SI JING HARNG 8592F-01

CPU Cooler



Onyx-151-D

Test Date: 27-02~02-03-2003

Test Product: Onyx-151-D 15" LCD Panel PC.

Test Site: AAEON DV Internal Lab.

Performed By : Rex Chang

Test Standard :

Reference IEC 68-2-61 Testing procedures
 Test Z/ABD : Climatic Sequence Test

Test Equipment:

Programmable Temperature & Humidity Chamber
 K.SON. INS. TECH. CORP.
 Model : THS-D4H+-100
 Date of Calibration : 06/10/01
 Serial Number: 1241

Temperature Measurement :

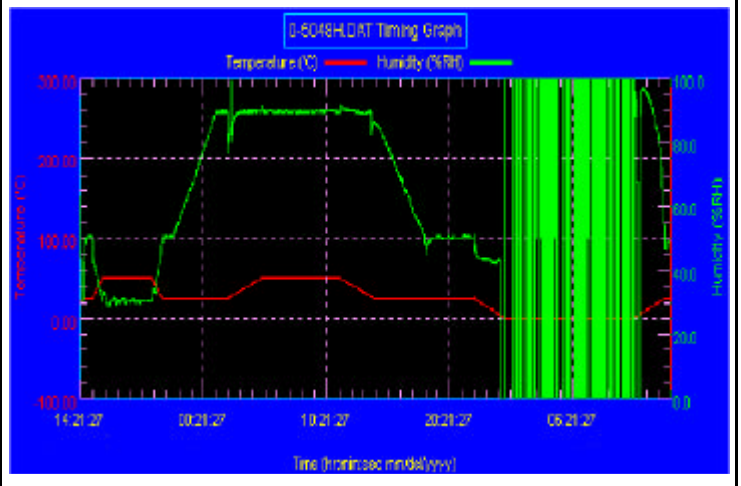
20 Channel Thermal Recorder:
 YOKOGAWA Inc,
 Model : DA100-13-1D
 Date of Calibration : 02/01/02
 Serial Number: 12A323190

Temperature & Humidity Cycle Test:

Testing Specification

Step	Temperature ()	Humidity (%RH)	Duration (HH:MM)
1	25	50	00:30
2	25	50	00:30
3	50	30	00:50
4	50	30	04:00
5	25	50	00:50
6	25	50	00:50
7	25	90	03:30
8	25	90	01:00
9	50	90	02:46
10	50	90	06:21
11	25	90	02:46
12	25	50	04:07
13	25	50	03:30
14	25	50	00:30
15	0	0	02:30
16	0	0	10:30
17	25	50	02:30
18	25	50	00:30

Test Curve:



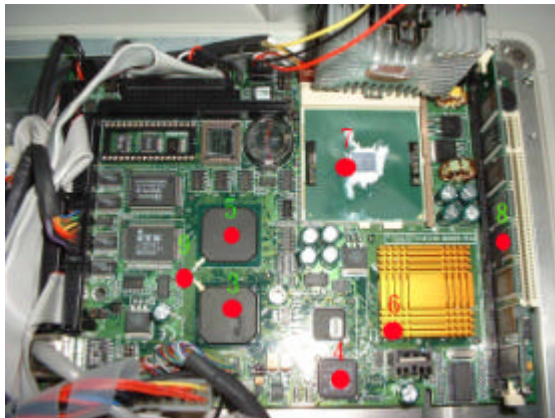
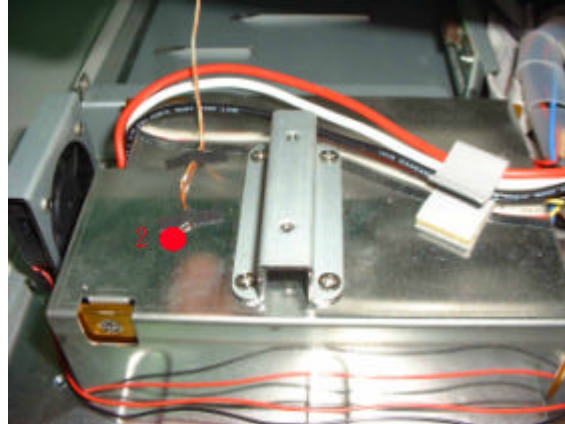
Sample Configuration & Quantity Under Test:

Using one Onyx-151-D 15" LCD Panel PC.

Onyx-151-D

Temperature Recorder:

Measuring Accelerometer Position:



Thermal profile data :

Onyx-151-D 15" LCD Panel PC

Point	Temp. Stage		
	50	25	0
1.HDD	64.3	40.4	16.3
2.Power Heat Sink Surface	64.8	40.5	15.8
3.C&T 69000 VGA Chipset	77.6	51.9	26.1
4.ESS Sound Chip	83.7	58.5	32.5
5.Intel FW82371 Chipset	67.6	42.5	17.2
6.Intel 82443BX Chipset	79.5	54.4	28.8
7.Intel Pentium 850MHz CPU	76.1	50.6	24.9
8.Memory	73.6	48.5	22.9
9.Control Box. Inside air temperature	69.3	44.2	18.8
10.Control Box. External Surface	59.8	35.2	10.5
11.Chamber air temperature	50.4	25.4	0.3

Sample Configuration & Quantity Under Test:

Quantity: 1 (Onyx-151-D 15" LCD Panel PC)

Test Result :

Passed.

The Onyx-151-D 15" LCD Panel PC meets temperature cycle test.