

# NIS-Q170J

## Temperature/Humidity Test Report

Report NO: 17IP020012

Summary	<p><input type="checkbox"/> <b>Pass</b></p> <p><input type="checkbox"/> <b>Fail</b></p> <p>Note : There is/are ___ defect(s) not list in the report, please check it in the DTS Website.</p> <p><input checked="" type="checkbox"/> <b>Pass with Deviation</b></p> <p><b>Comment:</b> 1. The Network test failed when the LAN load is setting on 100% in the PassMark Burn In Test 8.1 Pro, but change to 99% and test again, the test result passed. The error message shows "Timeout waiting for packet". Please refer to for PASSMARK SOFTWARE explanation as below: <a href="http://www.passmark.com/forum/showthread.php?2931-How-to-test-burnin-test-with-Network">http://www.passmark.com/forum/showthread.php?2931-How-to-test-burnin-test-with-Network</a></p> <p>2. The serial port tests failed in the PassMark Burn In Test 8.1 Pro. Error message show "COM port detected a Receive Overrun Error". Therefore install the serial port patch (0408_160324) and test again for temperature variation operation test. The test result passed.</p>
---------	---

Issue date

QE Manager

Test Engineer

2017-08-28

KJ Wang

Jerry Chen

## Test item list

- 
1. *Test item list* ----- 2
  2. *Configuration of EUT* ----- 3
  3. *Temp./humidity power on/off test* ----- 4
  4. *Temperature variation operation test* ----- 5
  5. *Cold start and hot start test* ----- 6

### Testing Result

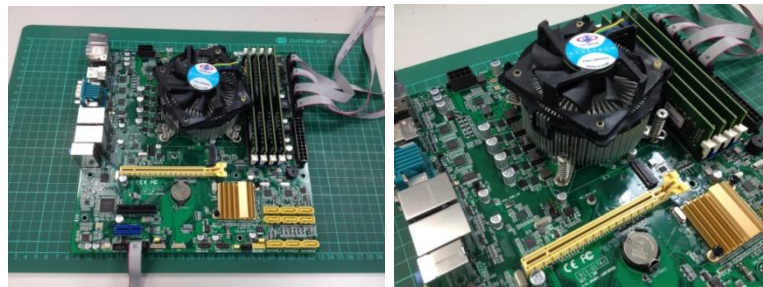
Num	Test item list	Result	Remark
1	Temp./humidity power on/off test	Pass	
2	Temperature variation operation test	Pass	
3	Cold start and hot start test	Pass	

# Configuration of EUT

## Test Product: NIS-Q170J

### Sample Configuration & Quantity Under Test:

1. Model name: NIS-Q170J
2. M/B Name: NIS-Q170J / Rev. 1.0
3. CPU: Intel Core i7-6700 / 3.4 GHz
4. BIOS Ver.: R0.3 (Q170JM03) (07/14/2017)
5. Chipset: Intel Q170
6. Memory: Innodisk / 16GB DDR4 2400 DIMM / SEC K4A8G085WB \* 4pcs
7. USB Flash: Transcend 8 GB (For DOS Mode Power On/Off Test)
8. 2.5" SATA HDD: Toshiba 320 GB / MQ01ABF032
9. Test Software: Windows 10 / Run PassMark Burn In Test 8.1 Pro
10. ATX Power Supply: CWT /DSA400P-C / 400W
11. CPU Cooler:



# Temp./humidity power on/off test

**Test Date:** 08-23 ~ 24-2017

**Test Site:** AAEON QE Dept.

**Test Standard:** Refer to IEC 68-2-30 Testing procedures  
 Test Db: Damp Heat Test  
 Refer to IEC 68-2-1 Testing procedures  
 Test Ad: Cold Test

**Test Equipment:**

Programmable Temperature & Humidity Chamber: (K.SON. INS. TECH. CORP.)  
 Model: THS-D7TS-100+LN2  
 Date of Calibration: 04/21/2017  
 Due date of Calibration: 04/20/2018  
 Serial Number: A0639

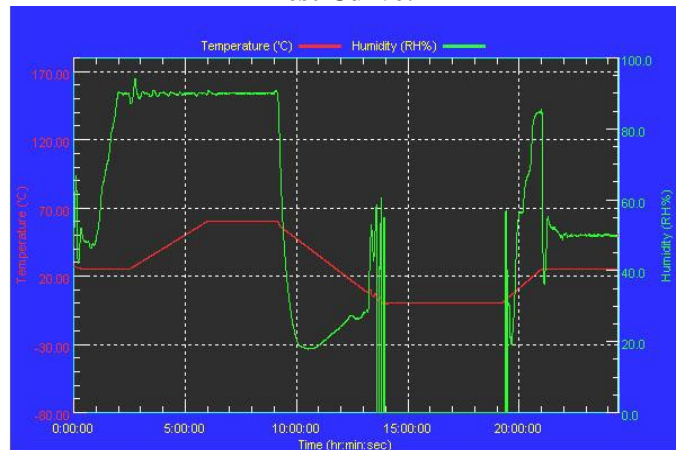
**Temperature & Humidity Power On/Off Test:**

1. Test High Temp./Humidity: 60°C @90%RH
2. Test Low Temperature: 0°C
3. Test Time: 24Hours / Cycle
4. Test Cycle: 1 Cycles
5. Test Software: DOS Mode / Run Boot Up Record Program ver 1.41

**Testing Specification:**

Step	Temperature (°C)	Humidity (%RH)	Duration (HH:MM)
1	25	50	00:30
2	25	50	00:30
3	25	90	01:00
4	25	90	00:30
5	60	90	03:30
6	60	90	03:00
7	0	0	04:50
8	0	0	05:23
9	25	50	01:47
10	25	50	03:00

**Test Curve:**



**Test Result:**

	Actual	Successful	Failure rate	Test Result
Power On/Off	1006/times	1006/times	0 %	Pass

**Note:** 1. Failure rate need to under 0%.  
 2. Power on/off fixture setting: on - 40 sec / off - 40 sec

# Temperature variation operation test

**Test Date:** 08-25 ~ 28-2017

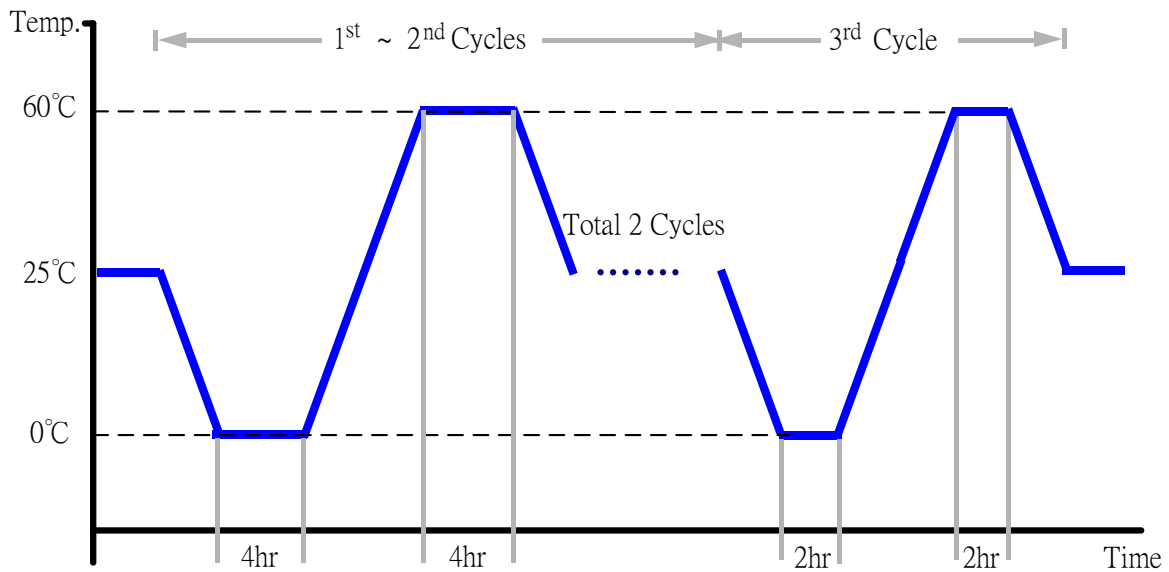
**Test Site:** AAEON QE Dept.

**Test Standard:** Refer to IEC 68-2-14 Testing procedures  
Test N: Change of temperature Test

**Test Equipment:**  
Programmable Temperature & Humidity Chamber: (K.SON. INS. TECH. CORP.)  
Model: THS-D7TS-100+LN2  
Date of Calibration: 04/21/2017  
Due date of Calibration: 04/20/2018  
Serial Number: A0639

## Temperature & Humidity Cycle Test:

1. Test Low Temperature: 0°C (1~3 cycles)
2. Test High Temperature: 60°C (1~3 cycles)
3. Test dwell time: 4Hrs (1~2 cycles)  
2Hrs (3<sup>rd</sup> cycle)
4. Temperature slope: 2°C/min
5. Test cycle: 3 cycles
6. Test Environment Curve:



## Test Result:

No issues were found during the temperature variation operation test.

# Cold start and hot start test

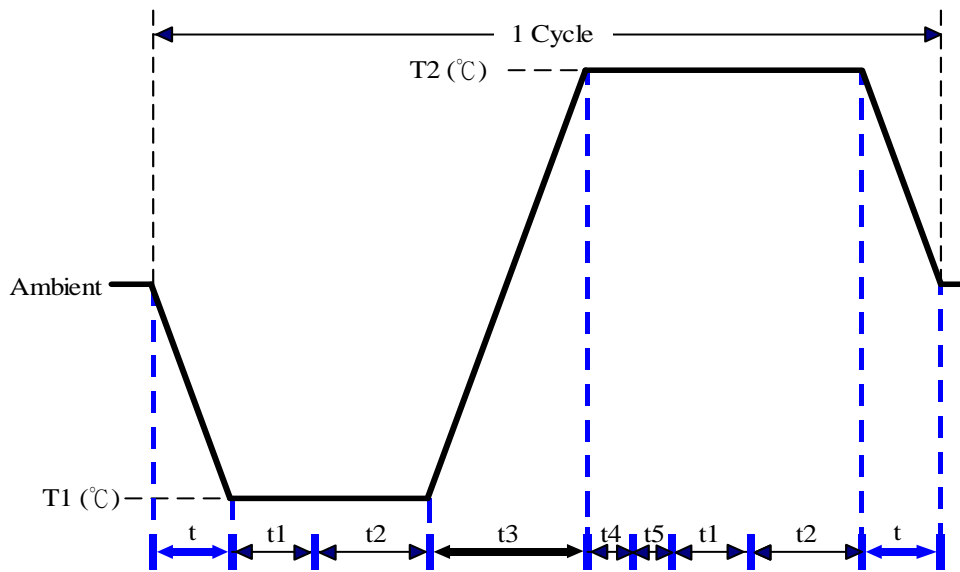
**Test Date:** 08-24 ~ 25-2017

**Test Site:** AAEON QE Dept.

**Test Standard:** Refer to IEC 68-2-14 Testing procedures  
Test N: Change of temperature Test

**Test Equipment:**  
Programmable Temperature & Humidity Chamber: (K.SON. INS. TECH. CORP.)  
Model: THS-D7TS-100+LN2  
Date of Calibration: 04/21/2017  
Due date of Calibration: 04/20/2018  
Serial Number: A0639

**Test Condition:**



Parameters	Description
T1	0°C
T2	60°C
t1	1 hrs
t2	2 hrs
t4, t5	30 min
t, t3	2°C/min
n (Cycle)	1

- t, t3 = temperature slope
- t, t1: Power Off
- t2: Power on/off test 10 times (on 2 min / off 5min)
- t3, t4: Run PassMark Burn In Test
- T5: Win. 10 Software restart test 2 times
- Test Software: Windows 10

**Test Result:**

- a. No issues were found during the cold start test.
- b. No issues were found during the hot start test.