

MPC-6800 A0.3 (Intel ULV Celeron 400MHz) ATX Power

Test Date: 06-10~16-2004

Test Product: MPC-6800 (Intel ULV Celeron 400MHz) ATX Power Rev: A0.3

Test Site: AAEON QA Internal Lab.

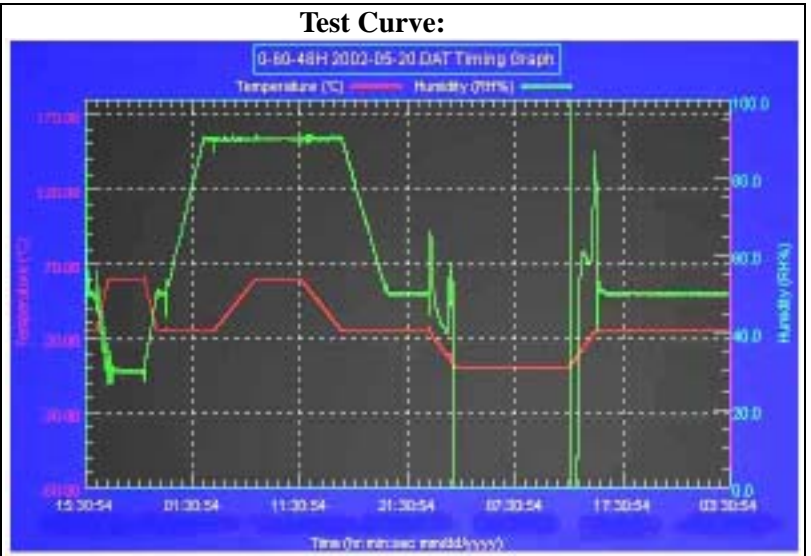
Performed By: Rex Chang

Test Standard: Reference IEC 68-2-30 Testing procedures
 Test DB: Damp Heat Test
 Reference IEC 68-2-61 Testing procedures
 Test Z/ABD: Climatic Sequence Test

Test Equipment:
 Programmable Temperature & Humidity Chamber
 K.SON. INS. TECH. CORP.
 Model: THS-D4H+-100
 Date of Calibration: 05/24/04
 Serial Number: 1241

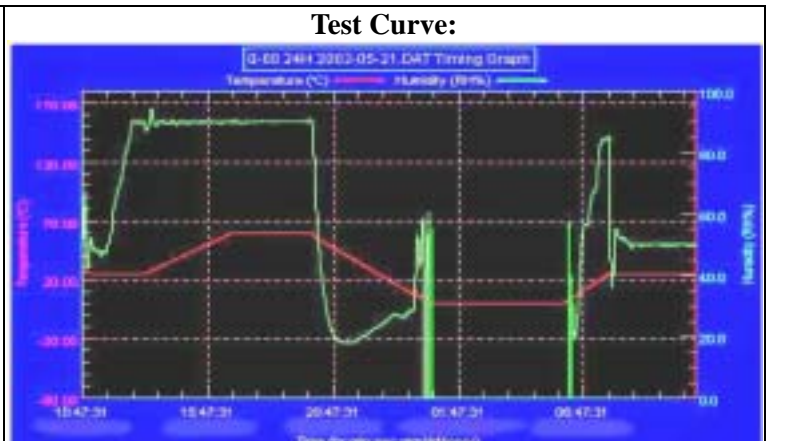
Temperature & Humidity Cycle Test:

Testing Specification			
Step	Temperature ()	Humidity (%RH)	Duration (HH:MM)
1	25	50	00:30
2	25	50	00:30
3	60	30	01:10
4	60	30	03:20
5	25	50	01:10
6	25	50	00:50
7	25	90	03:30
8	25	90	01:00
9	60	90	03:53
10	60	90	04:07
11	25	90	03:53
12	25	50	04:07
13	25	50	03:30
14	25	50	00:30
15	0	0	02:30
16	0	0	10:30
17	25	50	02:30
18	25	50	00:30



Temperature & Humidity Power On/Off Test

Testing Specification:			
Step	Temperature ()	Humidity (%RH)	Duration (HH:MM)
1	25	50	00:30
2	25	50	00:30
3	25	90	01:00
4	25	90	00:30
5	60	90	03:30
6	60	90	03:00
7	0	0	04:50
8	0	0	05:23
9	25	50	01:47
10	25	50	03:00



Sample Configuration & Quantity Under Test:**Sample 1:**

1. CPU: Onboard Intel ULV Celeron 400MHz / 7331A758 SL6SE RJ80530 (Bios Ver.0.7)
2. SDRAM: 1G SAMSUNGMB K4H560438E-GCCC (DDR400)
3. Chipset: VIA CLE266 0416CE 2IA1011361 + VT8235 0348CD 23A30H5300
4. VIA CLE266 (Share up to 32MB)
5. LAN: Realtek RTL-8110S
Realtek RTL-8100BL
6. Audio: Realtek ALC650 6CH AC97 CODEC
7. CFD: PQI 32MB
8. Software: DOS 6.22 / QAPlus 5.5
9. Cooler:

**Sample 2:**

- 1 CPU: Onboard Intel ULV Celeron 400MHz / 7331A758 SL6SE RJ80530 (Bios Ver.0.7)
- 2 SDRAM: 256MB SAMSUNG K4H560838D-TCB3 (DDR333)
- 3 Chipset: VIA CLE266 0416CE 2IA1011361 + VT8235 0348CD 23A30H5300
- 4 VIA CLE266 (Share up to 32MB)
- 5 LAN: Realtek RTL-8110S
Realtek RTL-8100BL
- 6 Audio: Realtek ALC650 6CH AC97 CODEC
- 7 HDD: Maxtor Fireball 3 ATA/133 40GB
- 8 Software: DOS 6.22 / Boot Up Record Program ver 1.41
- 9 Cooler:

**Test Result :****Passed.**

MPC-6800 A0.3 (Intel ULV Celeron 650MHz) ATX Power

Test Date: 06-25~30-2004

Test Product: MPC-6800 (Intel ULV Celeron 650MHz) ATX Power Rev: A0.3

Test Site: AAEON QA Internal Lab.

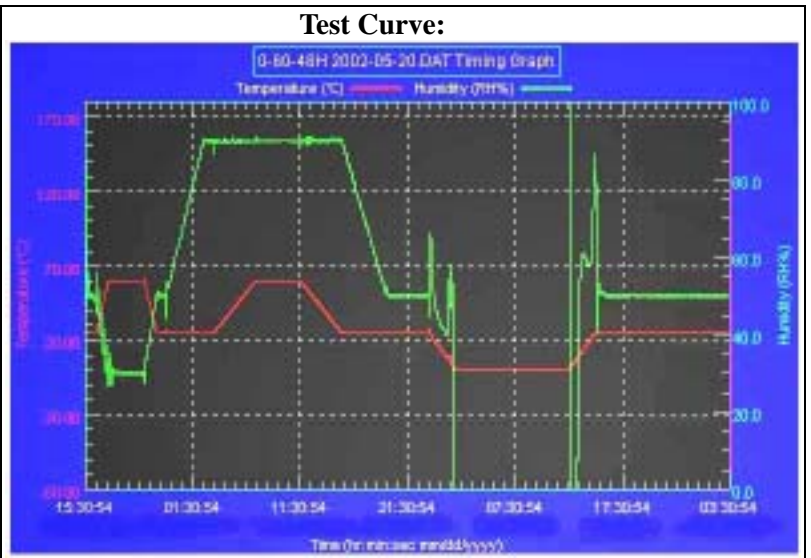
Performed By: Rex Chang

Test Standard: Reference IEC 68-2-30 Testing procedures
 Test DB: Damp Heat Test
 Reference IEC 68-2-61 Testing procedures
 Test Z/ABD: Climatic Sequence Test

Test Equipment:
 Programmable Temperature & Humidity Chamber
 K.SON. INS. TECH. CORP.
 Model: THS-D4H+-100
 Date of Calibration: 05/24/04
 Serial Number: 1241

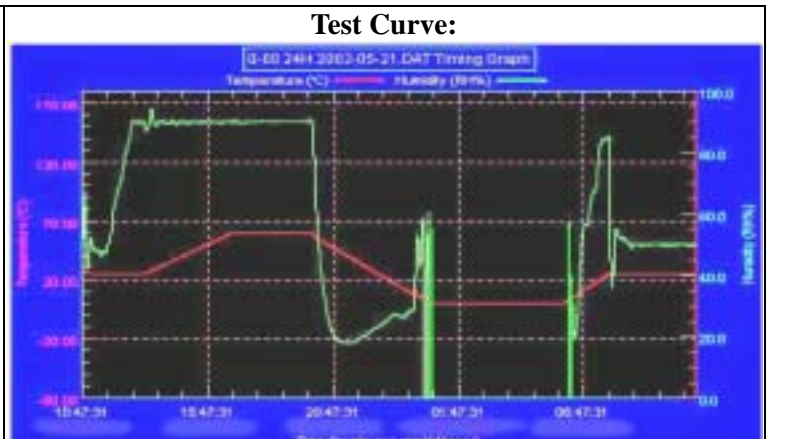
Temperature & Humidity Cycle Test:

Testing Specification			
Step	Temperature ()	Humidity (%RH)	Duration (HH:MM)
1	25	50	00:30
2	25	50	00:30
3	60	30	01:10
4	60	30	03:20
5	25	50	01:10
6	25	50	00:50
7	25	90	03:30
8	25	90	01:00
9	60	90	03:53
10	60	90	04:07
11	25	90	03:53
12	25	50	04:07
13	25	50	03:30
14	25	50	00:30
15	0	0	02:30
16	0	0	10:30
17	25	50	02:30
18	25	50	00:30



Temperature & Humidity Power On/Off Test

Testing Specification:			
Step	Temperature ()	Humidity (%RH)	Duration (HH:MM)
1	25	50	00:30
2	25	50	00:30
3	25	90	01:00
4	25	90	00:30
5	60	90	03:30
6	60	90	03:00
7	0	0	04:50
8	0	0	05:23
9	25	50	01:47
10	25	50	03:00



Sample Configuration & Quantity Under Test:**Sample 1:**

1. CPU: Onboard Intel ULV Celeron 650MHz / 7331A758 SL6SE RJ80530 (Bios Ver.0.7)
2. SDRAM: 128MB ELPIDA DD2516AKTA-7A (DDR266)
3. Chipset: VIA CLE266 0416CE 2IA1011361 + VT8235 0348CD 23A30H5300
4. VIA CLE266 (Share up to 32MB)
5. LAN: Realtek RTL-8110S
Realtek RTL-8100BL
6. Audio: Realtek ALC650 6CH AC97 CODEC
7. HDD: Maxtor Fireball 3 ATA/133 HDD 40GB
8. Software: DOS 6.22 / QAPlus 5.5
9. Cooler:

**Test Result :****Passed.**