



**AAEON Technology INC.**  
ISO-9001/ISO-14001 Certified  
Industrial Automation PCs

# **MB-662**

## **Environment Test Report**

**Release Date : DEC/29/2000**

---

**Issue Stamp**

---

**QA Manager**

---

**QE Manager**

---

**Test Engineer**

# Environment

**Model Name :** MB-662 Rev.A0.1

**Test Date :** 12-27-2000

**Test Site :** AAEON QE Dept.

**Performed by :** Milo Wang

**Test Standard :**

Select	NO.	Description
√	IEC 68-2-30	Test DB:Damp Heat Test
√	IEC 68-2-61	Test Z/ABD : Climatic Sequence Test

**Testing Item :**

Temperature & Humidity Cycle  
Temperature & Humidity Power On/Off Test

**Additional Test Peripheral :**

Configuration	Model
Test Software	QAPlus/FE V5.5
Test Fixture	Power on/off(110V) Fixture

**Testing Equipment :**

Programmable Temperature & Humidity Chamber  
Model : Ths-D4L+-100  
S/N : 1241  
Date of Calibration : 07-10-1998

**Sample Configuration & Quantity Under Test :**

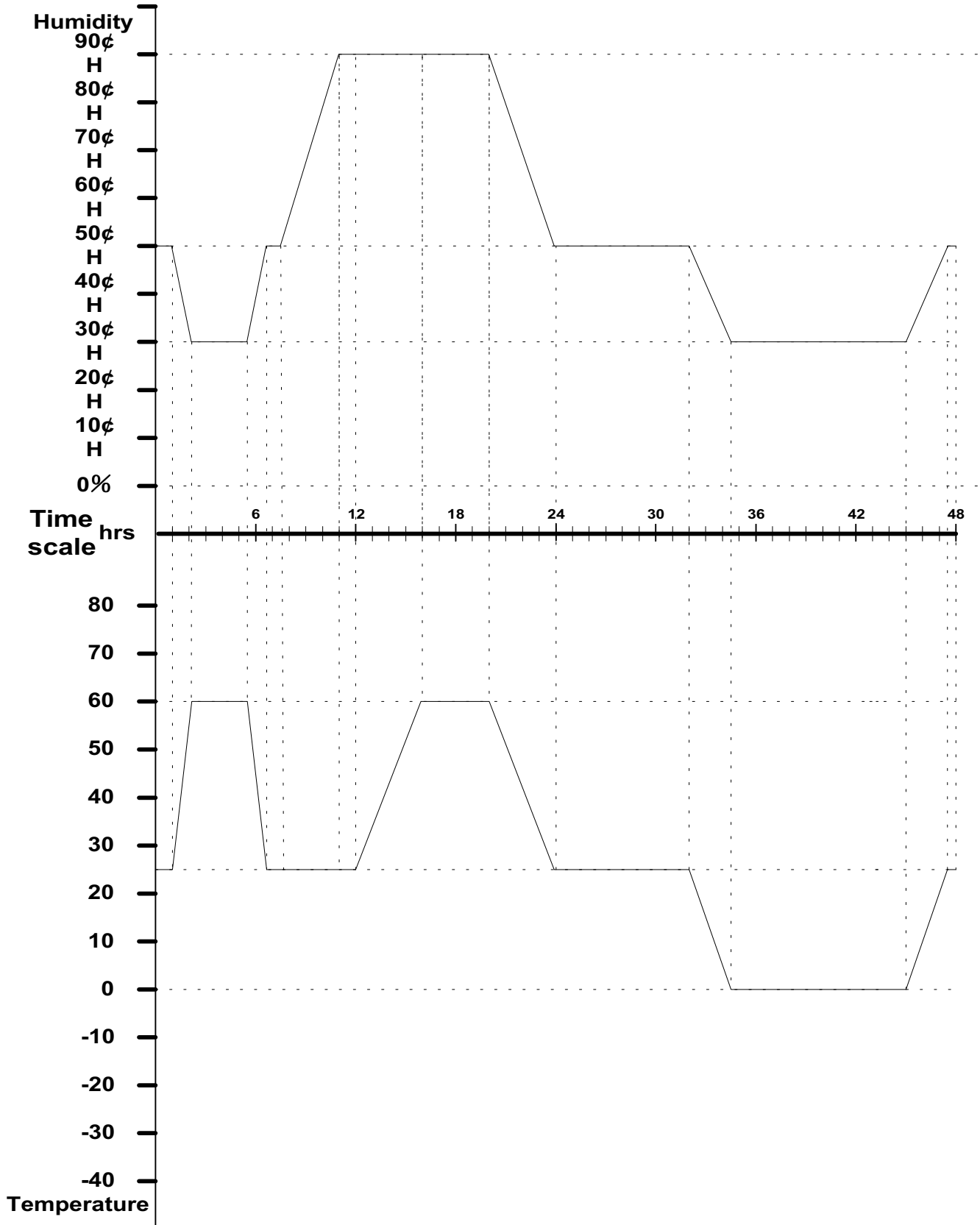
Use MB-662 Rev.A0.1 LPX Board  
1.CPU : Intel Pentium III 600MHz  
2.DRAM : 64MB(HY57V168010D TC-10S)  
3.Chipset : Intel FW82443BX/ FW82371EB  
4.VGA Chipset : C&T B69000  
5.I/O Chipset :ITE IT8661F  
6.BIOS Version:1.0 (12/21/2000)

**Test Result :**

Standard	Description	Result
IEC 68-2-30	Temperature & Humidity Power On/Off Test	Pass
IEC 68-2-61	Temperature & Humidity Cycle Test(Run QAPlus/FE V5.5)	Pass

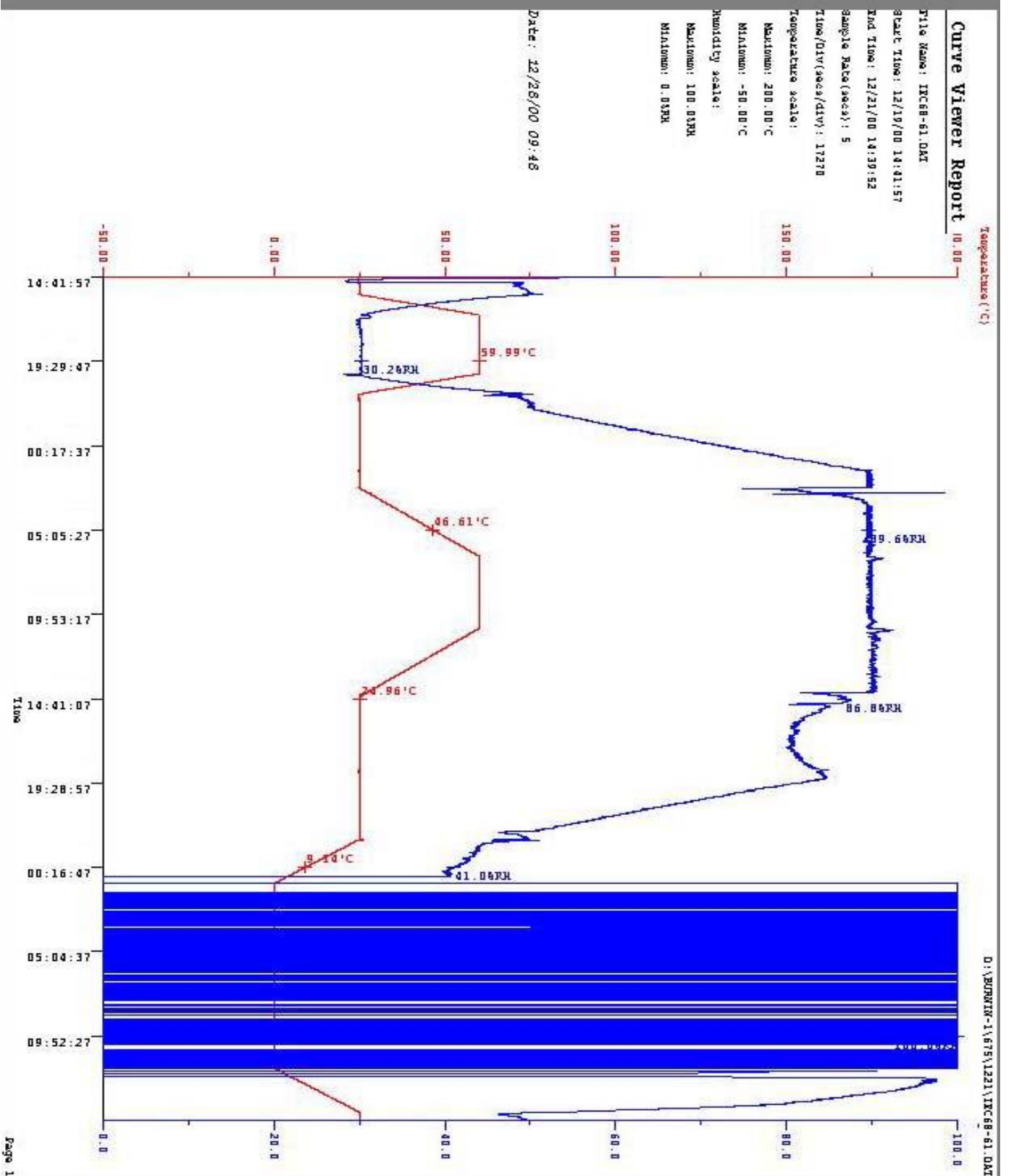
# Environment

Temperature & Humidity Cycle Test(Run QAPlus/FE V5.5)



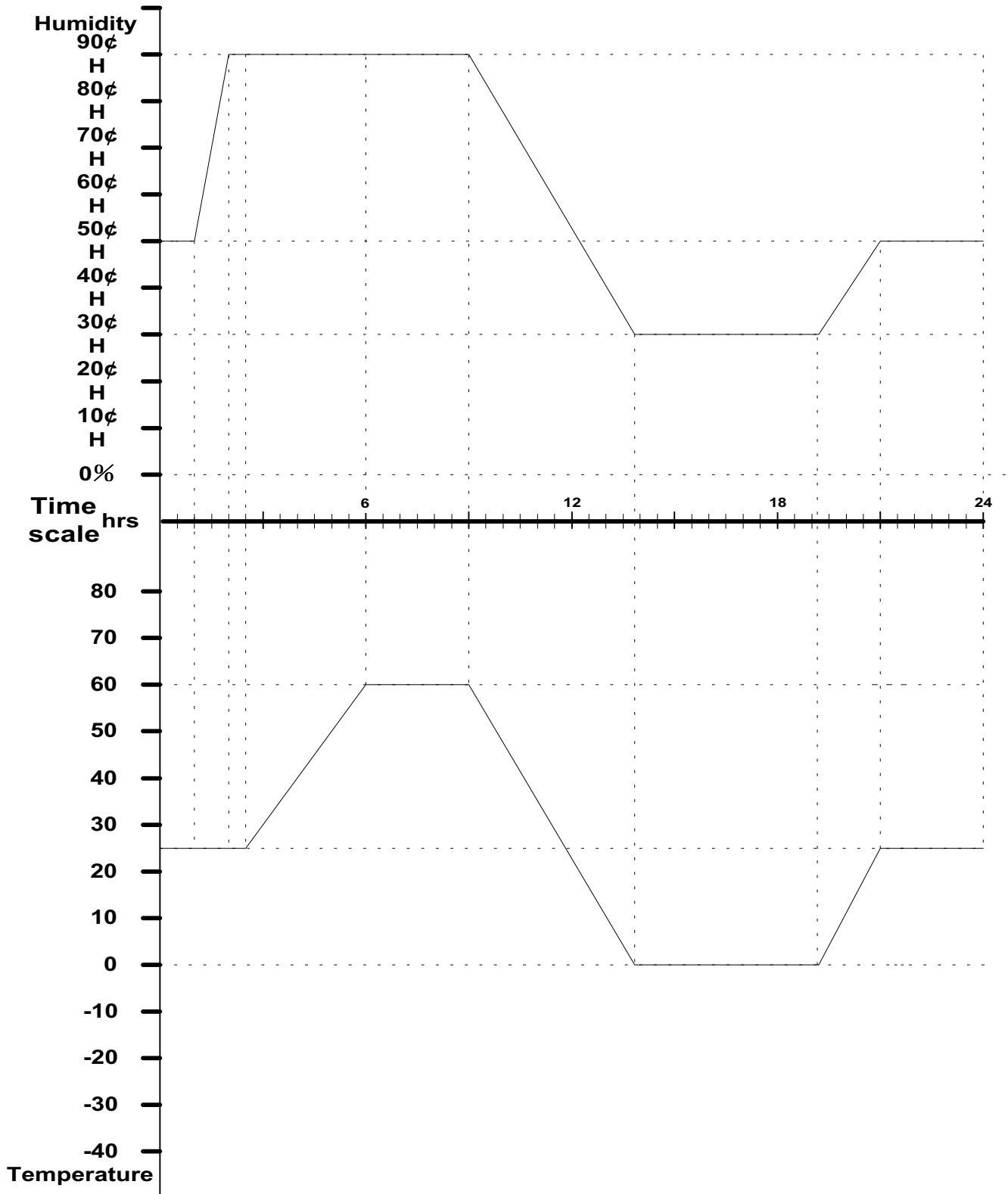
# Environment

## Temperature & Humidity Cycle Test(Run QAPlus/FE V5.5)



# Environment

## Temperature & Humidity Power On/Off Test



# Environment

## Temperature & Humidity Power On/Off Test

