

IXXAT INpact CE Slave

PCIe Mini

With AEC-6403 System

Environment Test Report

Report NO: 16P020015

Summary	<input checked="" type="checkbox"/> Pass <input type="checkbox"/> Fail <input type="checkbox"/> Pass with Deviation Comment: _____
---------	--

Issue date
2016-11-01

QE Manager
KJ Wang

Test Engineer
Ben Sun

Test item list

1. *Test item list* ----- 2
2. *Configuration of EUT* ----- 3
3. *Temperature cycle operation test* ----- 4
4. *Cold start and hot start test* ----- 5

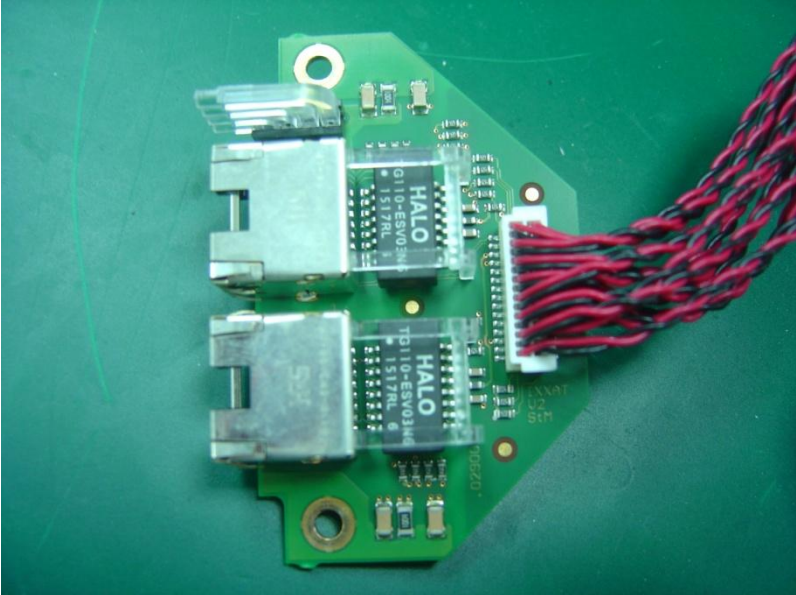
Testing Result

Num	Test item list	Result	Remark
1	Temperature cycle operation test	Pass	
2	Cold start and hot start test	Pass	

Configuration of EUT

Num	Item	Spec
1.	Fanless System	AEC-6403
	1. Main Board	PBA-BT1 A1.0
	2. BIOS Ver.	ACP-1104 R1.5
	3. CPU Type	Intel Bay Trail-D J1900
	4. Chipset	Intel Bay Trail-D
	5. Wide Temp. Memory	Memphis DDR3L-1600 8GB
	6. HDD	Toshiba 100GB 4200RPM
	7. Test Software	Windows 10 / Run PassMark BurnIn test 8.1 Pro
2.	Adapter:	FSP / FSP060-DBAE1 / Output: 12V;5A MAX

Module Photo



Temperature cycle operation test

Test Date: 10-28 ~ 11-01-2016

Test Product: IXXAT

Test Site: AAEON QE Dept.

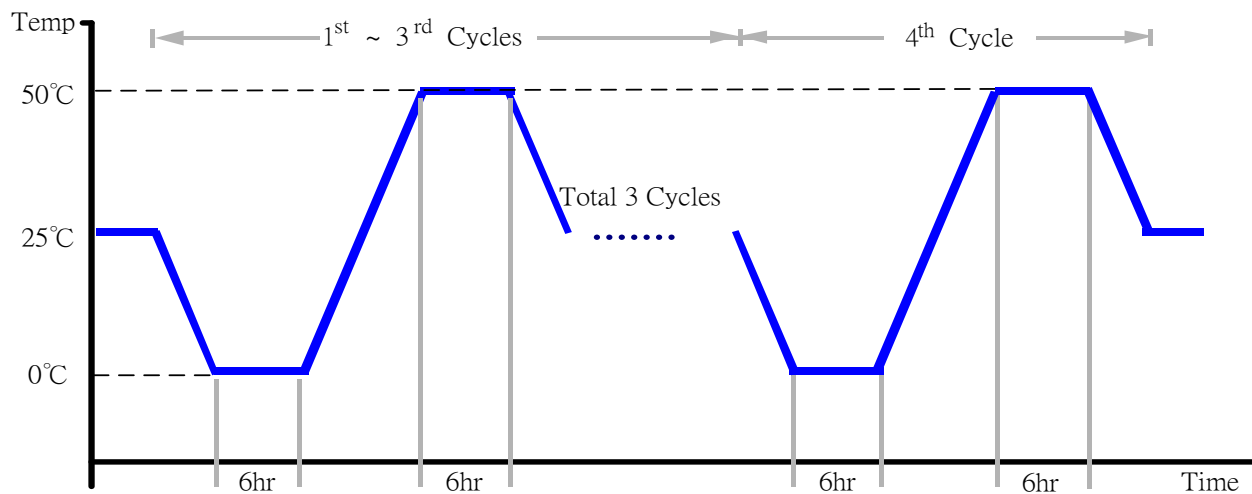
Test Standard: Refer to IEC68-2-14 Testing procedures
Test N: Change of temperature Test

Test Equipment:

Programmable Temperature & Humidity Chamber: (K.SON. INS. TECH. CORP.)
Model: THS-B6T-150+LN2
Date of Calibration: 04/25/16
Serial Number: 6488KT

Test Condition:

1. Test Low Temperature: 0°C
2. Test High Temperature: 50°C
3. Test dwell time: 6Hrs
4. Temperature slope: 2°C/min
5. Test cycle: 4 cycles
6. Test Software: Windows 10 / Run PassMark Burn In Test 8.1 Pro
7. Test Environment Curve:



Sample Configuration & Quantity Under Test:

Quantity: 1 (IXXAT)

Test Result:

No issues were found during the temperature operation cycle test.

Cold start and hot start test

Test Date: 10-26 ~ 27-2016

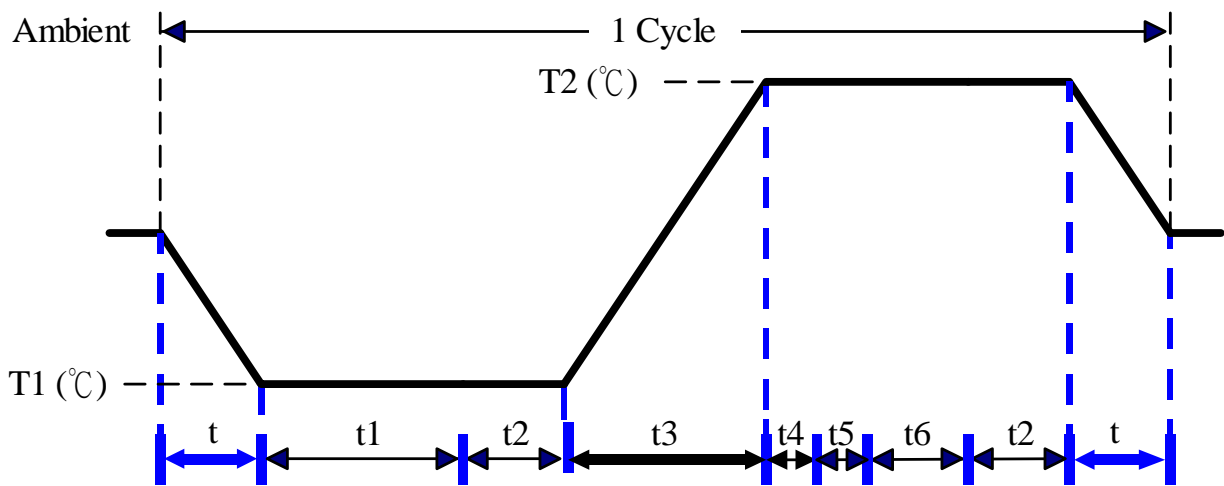
Test Product: IXXAT

Test Site: AAEON QE Dept.

Test Standard: Refer to IEC 68-2-14 Testing procedures
Test N: Change of temperature Test

Test Equipment:
Programmable Temperature & Humidity Chamber: (K.SON. INS. TECH. CORP.)
Model: THS-B6T-150+LN2
Date of Calibration: 04/25/16
Serial Number: 6488KT

Test Condition:



Parameters	Description
T1	0°C
T2	50°C
t1	4 hrs
t2, t6	2 hrs
t4, t5	1hrs
t, t3	2°C/min
n (Cycle)	1

t = temperature slope
t, t1, t6: Power Off
t2: Power on/off test 10 times (on 2 min / off 5min)
t3, t4: Run PassMark Burn In Test
t5: Win 10 Software restart test 2 times
Test Software: Windows 10

Test Result:

- a. No issues were found during the cold start test.
- b. No issues were found during the hot start test.