



Computing Platform Service Partner

IMBI-Q57

Temperature/Humidity Test Report

Report NO: 10I020012

Issued by: Rex Chang / 08/19/2010

Test Engineer Date

Reviewed by: Jansin Lee / 08/19/2010

Sr. Manager Date

Test item list

- | | |
|------------------------------------------------------|---|
| 1. <i>Test item list</i> ----- | 2 |
| 2. <i>Configuration of EUT</i> ----- | 3 |
| 3. <i>Temp./humidity power on/off test</i> ----- | 4 |
| 4. <i>Temperature variation operation test</i> ----- | 5 |
| 5. <i>Cold start and hot start test</i> ----- | 6 |

Testing Result

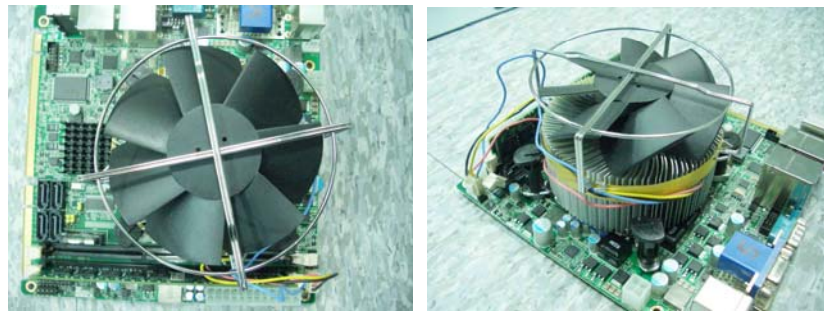
Num	Test item list	Result	Remark
1	Temp./humidity power on/off test	Pass	
2	Temperature variation operation test	Pass	
3	Cold start and hot start test	Pass	

Configuration of EUT

Test Product: IMBI-Q57 A0.2

Sample Configuration & Quantity Under Test:

1. CPU: Intel Core i5 / 660 / 3.33GHz (Bios Ver.4.6.3.7 IMBIQ57 1.00 x64)
2. Chipset: Intel Ironlake IMC / Intel Q57
3. VGA: Intel Ironlake
4. Memory: Transcend 4GB * 1 / Hynix H5TQ2G83AFR H9C (DDR3-1333)
5. Card Reader/Writer: Gaibo (For DOS Mode Power On/Off Test)
6. CFD: PQI 32MB(For DOS Mode Power On/Off Test)
7. 2.5" SATA HDD: Fujitsu MHW2060BH / 60GB
8. Test Software: Windows XP / Run PassMark Burn In Test 4.0 Pro
9. ATX Power Supply: Seventeam ST-350EAG-05G
10. CPU Cooler:



Test Date: 08-13~15-2010

Test Site: AAEON QE Internal Lab.

Test Standard: Reference IEC 68-2-30 Testing procedures
Test Db: Damp Heat Test

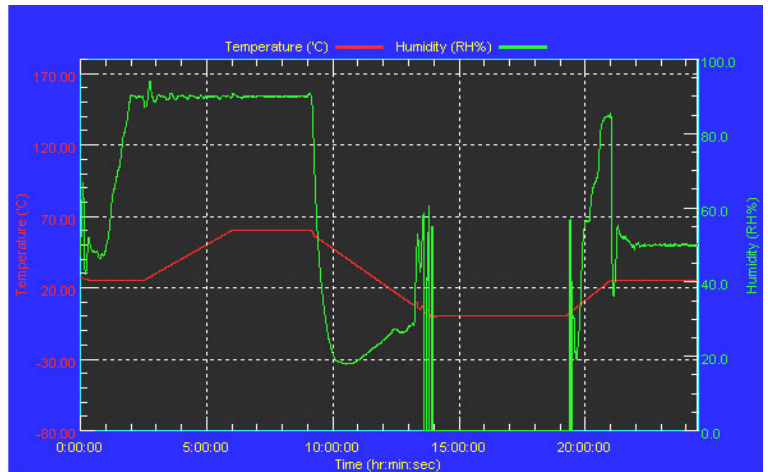
Test Equipment:
Programmable Temperature & Humidity Chamber
K.SON. INS. TECH. CORP.
Model: THS-A4C-100
Date of Calibration: 05/25/10
Serial Number: 3188

Temperature & Humidity Power On/Off Test:

Testing Specification:

Step	Temperature (°C)	Humidity (%RH)	Duration (HH:MM)
1	25	50	00:30
2	25	50	00:30
3	25	90	01:00
4	25	90	00:30
5	60	90	03:30
6	60	90	03:00
7	0	0	04:50
8	0	0	05:23
9	25	50	01:47
10	25	50	03:00

Test Curve:



Test Result:

No problem was found during the temperature & humidity power on/off test.

Test Method	Actual	Successful	Failure rate	On time	Off Time
Power On/Off	1303/times	1303/times	0 %	37 Sec.	37 Sec.
Note: Failure rate need to under 0.2%.					

Test Date: 08-16~17-2010

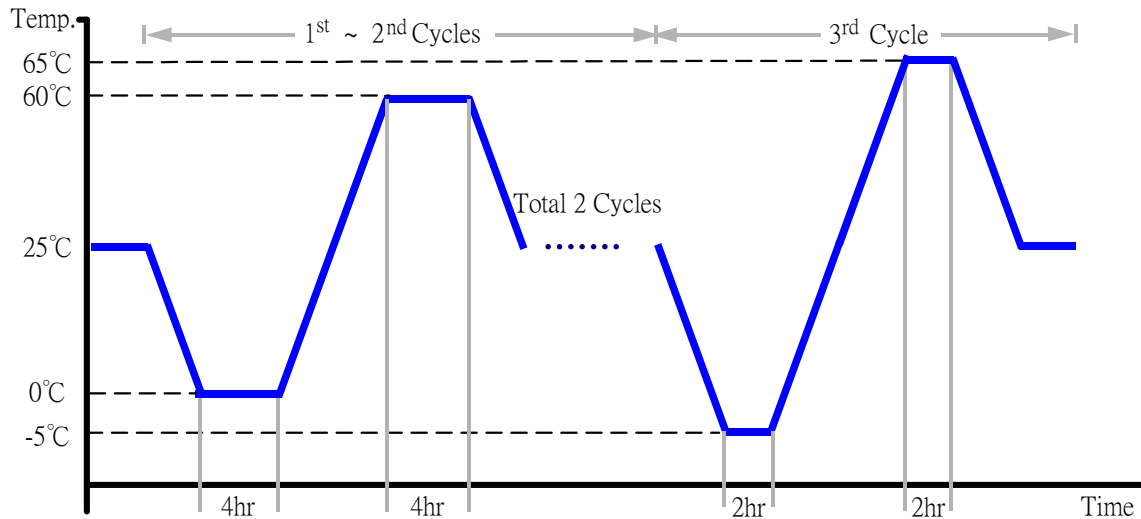
Test Site: AAEON QE Internal Lab.

Test Standard: Reference IEC 68-2-14 Testing procedures
Test N: Change of temperature Test

Test Equipment:
Programmable Temperature & Humidity Chamber
K.SON. INS. TECH. CORP.
Model: THS-A4C-100
Date of Calibration: 05/25/10
Serial Number: 3188

Temperature & Humidity Cycle Test:

1. Test Low Temperature: 0°C (1~2 cycles)
-5°C (3rd cycle)
2. Test High Temperature: 60°C (1~2 cycles)
65°C (3rd cycle)
3. Test dwell time: 4Hrs (1~2 cycles)
2Hrs (3rd cycle)
4. Temperature slope: 2°C/min
5. Test cycle: 3 cycles
6. Test Environment Curve:



Test Result:

No problem was found during the temperature variation operation test.

Cold start and hot start test

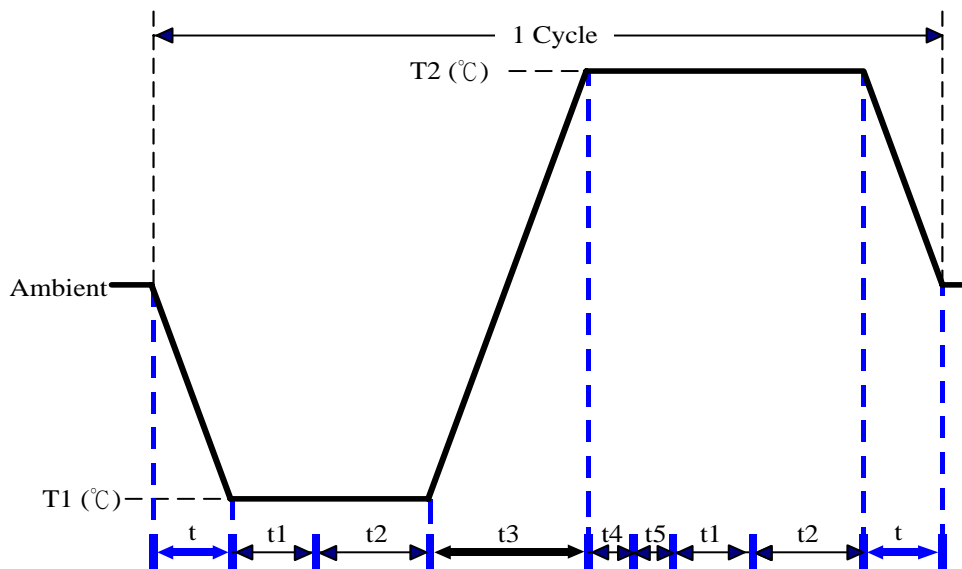
Test Date: 08-17~18-2010

Test Site: AAEON QE Internal Lab.

Test Standard: Reference IEC 68-2-14 Testing procedures
Test N: Change of temperature Test

Test Equipment:
Programmable Temperature & Humidity Chamber
K.SON. INS. TECH. CORP.
Model: THS-A4C-100
Date of Calibration: 05/25/10
Serial Number: 3188

Test Condition:



Parameters	Description
T1	-5°C
T2	65°C
t1	1 hrs
t2	2 hrs
t4, t5	30 min
t, t3	2°C/min
n (Cycle)	1

t,t3 = temprature slope
t, t1: Power Off
t2: Power on/off test 10 times (on 2 min / off 5min)
t3,t4: Run PassMark Burn In Test
t5: Win XP Software restart test 2 times
Test Software: Windows XP

Test Result:

- a. No problem was found during the cold start test.
- b. No problem was found during the hot start test.