

IMBA-H110A

Temperature/Humidity Test Report

Report NO: 17IP020009

Summary	<p><input type="checkbox"/> Pass</p> <p><input type="checkbox"/> Fail Note : There is/are ___ defect(s) not list in the report, please check it in the DTS Website.</p> <p><input checked="" type="checkbox"/> Pass with Deviation Comment: The LAN load is setting on 100% under PassMark Burn In Test 8.1 Pro, the Network test failed, but change to 99% and test again, the test result pass. The error message shows “Timeout waiting for packet”. Please refer to for PASSMARK SOFTWARE explanation as below: http://www.passmark.com/forum/showthread.php?2931-How-to-test-burnin-test-with-Network</p>
---------	---

Issue date

2017-06-28

QE Manager

KJ Wang

Test Engineer

Jerry Chen

Test item list

-
1. *Test item list* ----- 2
 2. *Configuration of EUT* ----- 3
 3. *Temp./humidity power on/off test* ----- 4
 4. *Temperature variation operation test* ----- 5
 5. *Cold start and hot start test* ----- 6

Testing Result

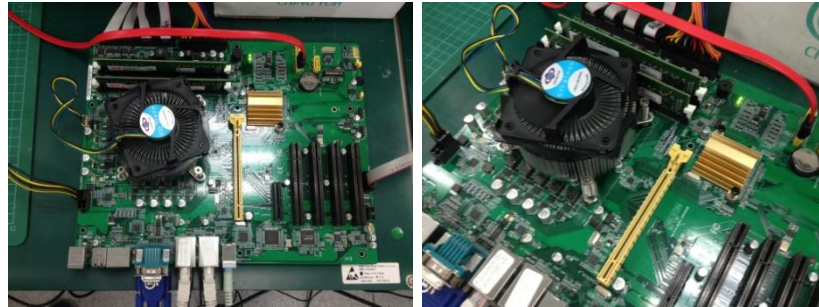
Num	Test item list	Result	Remark
1	Temp./humidity power on/off test	Pass	
2	Temperature variation operation test	Pass	
3	Cold start and hot start test	Pass	

Configuration of EUT

Test Product: IMBA-H110A

Sample Configuration & Quantity Under Test:

1. Model name: IMBA-H110A
2. M/B Name: IMBA-H110A / Rev. 1.0
3. CPU: Intel Core i7-6700 / 3.4 GHz
4. BIOS Ver.: R0.2 (AH11AM02) (06/12/2017)
5. Chipset: Intel H110
6. Memory: Innodisk / 16GB DDR4 2400 DIMM / SEC K4A8G085WB * 2pcs
7. USB Flash: Transcend 8 GB (For DOS Mode Power On/Off Test)
8. 2.5" SATA HDD: WD / WD3200BEVT / 320GB
9. Test Software: Windows 10 / Run PassMark Burn In Test 8.1 Pro
10. ATX Power Supply: CWT /DSA400P-C / 400W
11. CPU Cooler:



Temp./humidity power on/off test

Test Date: 06-26 ~ 27-2017

Test Site: AAEON QE Dept.

Test Standard: Refer to IEC 68-2-30 Testing procedures
 Test Db: Damp Heat Test
 Refer to IEC 68-2-1 Testing procedures
 Test Ad: Cold Test

Test Equipment:

Programmable Temperature & Humidity Chamber: (K.SON. INS. TECH. CORP.)
 Model: THS-D7TS-100+LN2
 Date of Calibration: 04/21/2017
 Due date of Calibration: 04/20/2018
 Serial Number: A0639

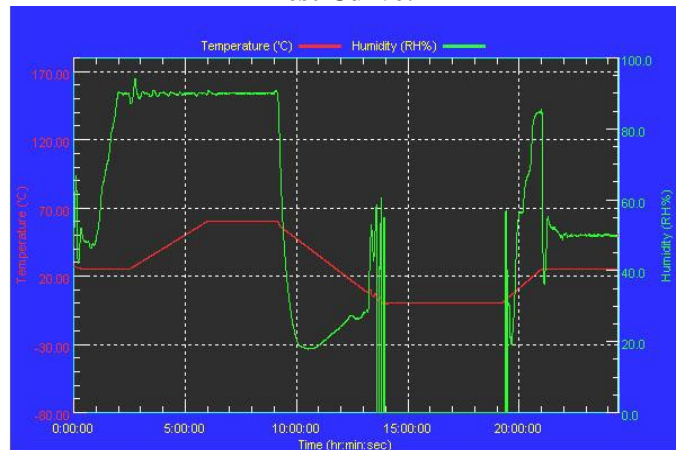
Temperature & Humidity Power On/Off Test:

1. Test High Temp./Humidity: 60°C @90%RH
2. Test Low Temperature: 0°C
3. Test Time: 24Hours / Cycle
4. Test Cycle: 1 Cycles
5. Test Software: DOS Mode / Run Boot Up Record Program ver 1.41

Testing Specification:

Step	Temperature (°C)	Humidity (%RH)	Duration (HH:MM)
1	25	50	00:30
2	25	50	00:30
3	25	90	01:00
4	25	90	00:30
5	60	90	03:30
6	60	90	03:00
7	0	0	04:50
8	0	0	05:23
9	25	50	01:47
10	25	50	03:00

Test Curve:



Test Result:

	Actual	Successful	Failure rate	Test Result
Power On/Off	1002/times	1002/times	0 %	Pass

Note: 1. Failure rate need to under 0%.
 2. Power on/off fixture setting: on - 40 sec / off - 40 sec

Temperature variation operation test

Test Date: 06-23 ~ 26-2017

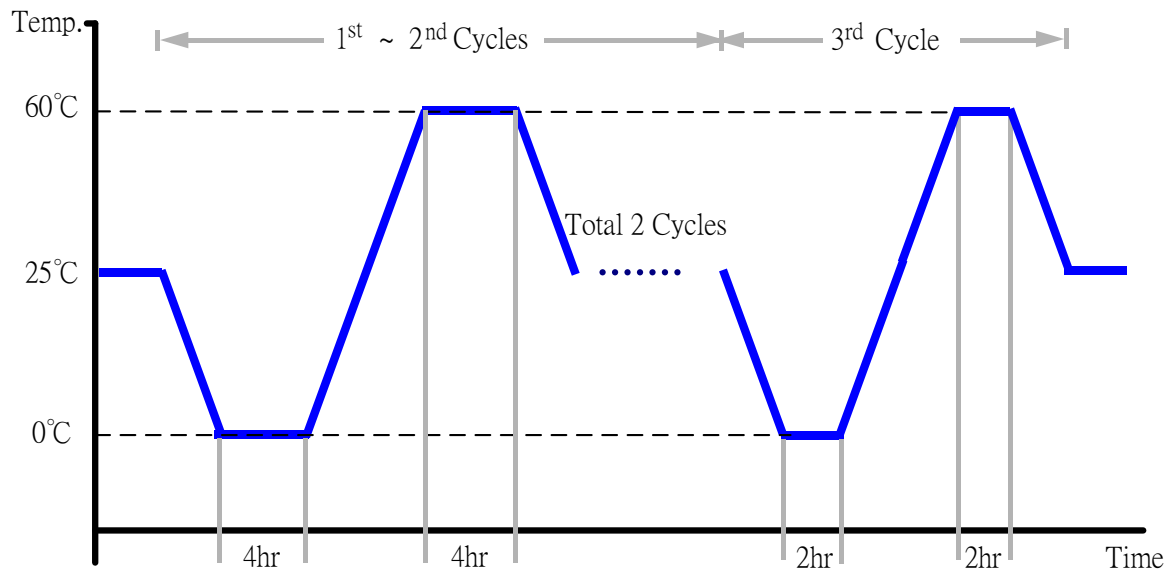
Test Site: AAEON QE Dept.

Test Standard: Refer to IEC 68-2-14 Testing procedures
Test N: Change of temperature Test

Test Equipment:
Programmable Temperature & Humidity Chamber: (K.SON. INS. TECH. CORP.)
Model: THS-D7TS-100+LN2
Date of Calibration: 04/21/2017
Due date of Calibration: 04/20/2018
Serial Number: A0639

Temperature & Humidity Cycle Test:

1. Test Low Temperature: 0°C (1~3 cycles)
2. Test High Temperature: 60°C (1~3 cycles)
3. Test dwell time: 4Hrs (1~2 cycles)
2Hrs (3rd cycle)
4. Temperature slope: 2°C/min
5. Test cycle: 3 cycles
6. Test Environment Curve:



Test Result:

No issues were found during the temperature variation operation test.

Cold start and hot start test

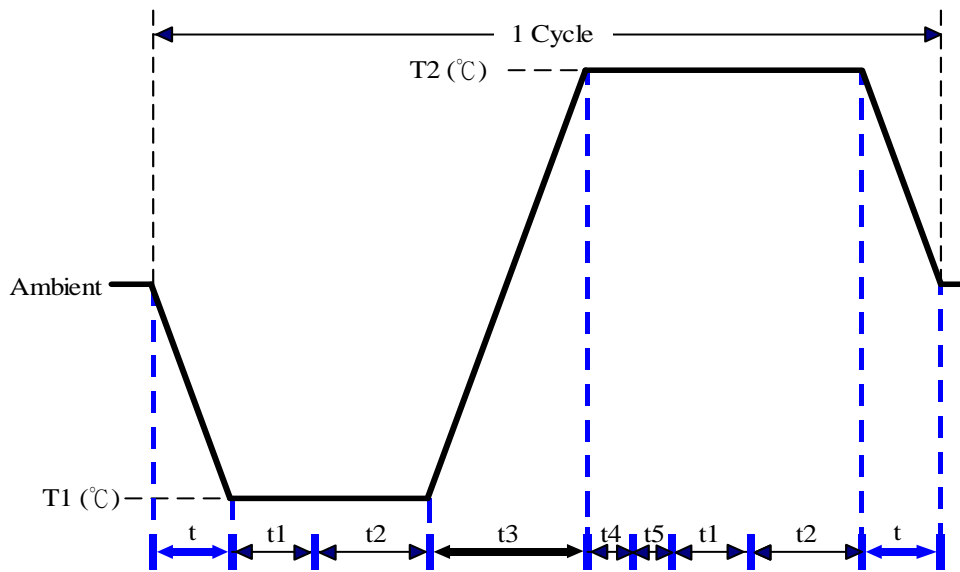
Test Date: 06-27 ~ 28-2017

Test Site: AAEON QE Dept.

Test Standard: Refer to IEC 68-2-14 Testing procedures
Test N: Change of temperature Test

Test Equipment:
 Programmable Temperature & Humidity Chamber: (K.SON. INS. TECH. CORP.)
 Model: THS-D7TS-100+LN2
 Date of Calibration: 04/21/2017
 Due date of Calibration: 04/20/2018
 Serial Number: A0639

Test Condition:



Parameters	Description
T1	0°C
T2	60°C
t1	1 hrs
t2	2 hrs
t4, t5	30 min
t, t3	2°C/min
n (Cycle)	1

- t, t3 = temperature slope
- t, t1: Power Off
- t2: Power on/off test 10 times (on 2 min / off 5min)
- t3, t4: Run PassMark Burn In Test
- T5: Win. 10 Software restart test 2 times
- Test Software: Windows 10

Test Result:

- a. No issues were found during the cold start test.
- b. No issues were found during the hot start test.