



1. <i>Test item list</i> -----	2
2. <i>Temp./humidity power on/off test</i> -----	3
3. <i>Temperature variation operation test</i> -----	4
4. <i>Cold start and hot start test</i> -----	5

## Test Product: IMBA-910 A0.3

### Sample Configuration & Quantity Under Test:

1. CPU: Intel Pentium 4 / LGA775 / 3.8GHz (Bios Ver.0.P2)
2. Chipset: Intel Q965 + Intel ICH8
3. VGA: Intel Q965
4. Memory: DSL 1GB / ELPIDA E5108AGBG (DDR2-667) \* 4 pcs
5. CFD: PQI 128MB
6. SATA HDD: Seagate ST3120026AS / 120GB
7. Test Software: Windows XP / Run PassMark Burn In Test Pro 4.0
8. ATX Power Supply: Seventeam ST-350EAG-05G
9. CPU Cooler:



**Test Date:** 12-25~26-2007

**Test Site:** AAEON QA Internal Lab.

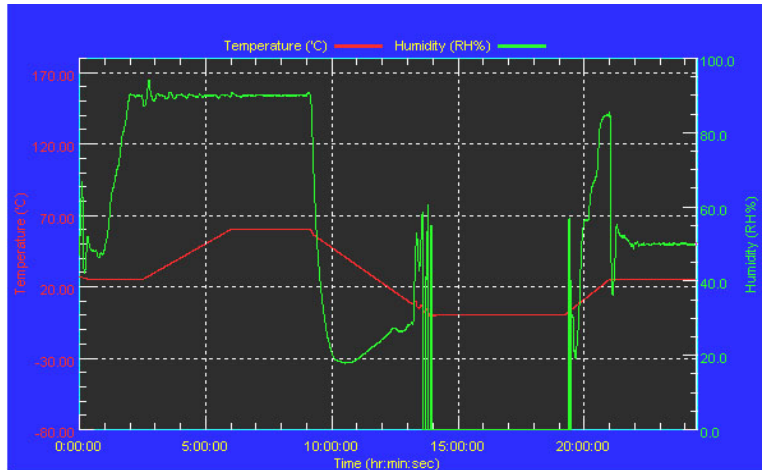
**Test Standard:** Reference IEC 68-2-30 Testing procedures  
Test Db: Damp Heat Test

**Test Equipment:**  
Programmable Temperature & Humidity Chamber  
K.SON. INS. TECH. CORP.  
Model: THS-D4L+-100  
Date of Calibration: 11/06/07  
Serial Number: 2582

## Temperature & Humidity Power On/Off Test:

### Testing Specification:

### Test Curve:



### Test Result:

No problem was found during the temperature & humidity power on/off test.

**Test Date:** 12-27-2007

**Test Site:** AAEON QA Internal Lab.

**Test Standard:** Reference IEC 68-2-14 Testing procedures  
Test N: Change of temperature Test

**Test Equipment:**  
Programmable Temperature & Humidity Chamber  
K.SON. INS. TECH. CORP.  
Model: THS-D4L+-100  
Date of Calibration: 11/06/07  
Serial Number: 2582

**Temperature & Humidity Cycle Test:**

- High Temperature: 60°C (1~3 cycles)
- Low Temperature: 0°C (1~3 cycles)
- 3. Test dwell time: 4Hrs (1~2 cycles)  
2Hrs (3<sup>rd</sup> cycle)
- 4. Temperature slope: 2°C/min
- 5. Test cycle: 3 cycles
- 6. Test Environment Curve:

**Test Result:**

No problem was found during the temperature variation operation test.

# Cold start and hot start test

---

**Test Date:** 12-28-2007

**Test Site:** AAEON QA Internal Lab.

**Test Standard:** Reference IEC 68-2-14 Testing procedures  
Test N: Change of temperature Test

**Test Equipment:**  
Programmable Temperature & Humidity Chamber  
K.SON. INS. TECH. CORP.  
Model: THS-D4L+-100  
Date of Calibration: 11/06/07  
Serial Number: 2582

**Test Condition:**

**Test Result:**

- a. No problem was found during the cold start test.
- b. No problem was found during the hot start test.