

Temperature cycle test

Test Date: 06-17~28-2006

Test Product: HSB-813S A0.2 + BP-206SS-P4 A1.1

Test Site: AAEON QA Internal Lab.

Performed By: Rex Chang

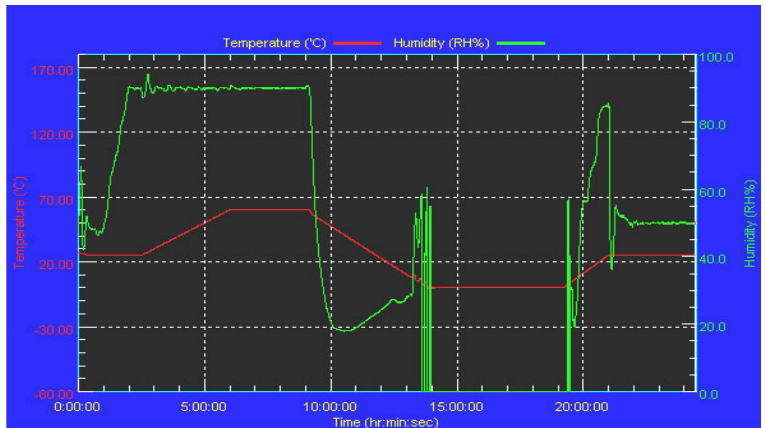
Test Standard: Reference IEC 68-2-30 Testing procedures
 Test DB: Damp Heat Test
 Reference IEC 68-2-61 Testing procedures
 Test Z/ABD: Climatic Sequence Test

Test Equipment:
 Programmable Temperature & Humidity Chamber
 K.SON. INS. TECH. CORP.
 Model: THS-D4L+-100
 Date of Calibration: 11/21/05
 Serial Number: 2582

**Temperature & Humidity Power On/Off Test:
 Testing Specification:**

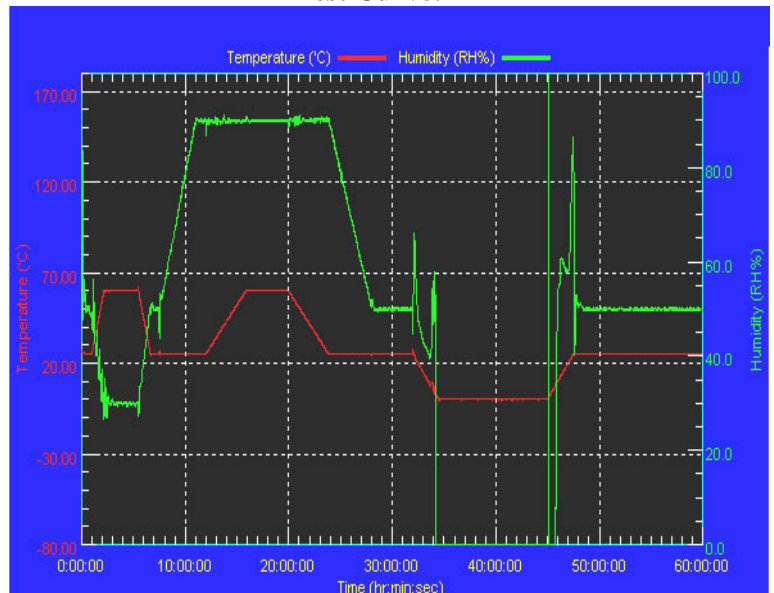
Step	Temperature (°C)	Humidity (%RH)	Duration (HH:MM)
1	25	50	00:30
2	25	50	00:30
3	25	90	01:00
4	25	90	00:30
5	60	90	03:30
6	60	90	03:00
7	0	0	04:50
8	0	0	05:23
9	25	50	01:47
10	25	50	03:00

Test Curve:



**Temperature & Humidity Cycle Test:
 Testing Specification**

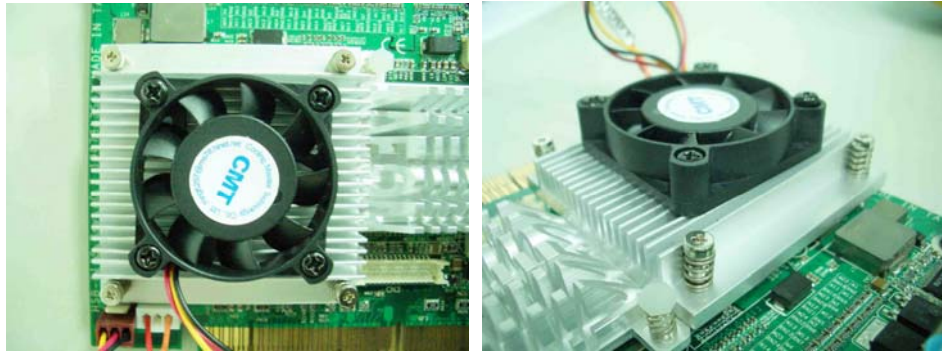
Test Curve:



Temperature cycle test

Sample Configuration & Quantity Under Test:

1. CPU: Intel Pentium-M 1.6GHz (Bios Ver.0.3a)
2. Memory: 512MB Hynix HY5DU121622AT-J (DDR-333)
3. Chipset: Intel 82855GME + Intel 82801DB (ICH4)
4. VGA: Integrated on Intel 82852GM, AGP 4X
5. LAN: Intel 82551QM * 1 / Intel 82562EZ
6. DOM: PQI 32MB
7. HDD: Maxtor DiamondMax Plus 8 / 40GB
8. Test Software: Windows 2000 / Run PassMark Burn In Test Pro 4.0
9. Backplane: BP-206SS-P4 A1.1
10. ATX Power Supply: FSP ATX-300GU
11. CPU Cooler:



Test Result:

1. **Temperature & Humidity Power On/Off Test:**
No problem was found during the Temperature & Humidity Power On/Off Test.
2. **Temperature & Humidity Cycle Test:**
No problem was found during the Temperature & Humidity Cycle Test.