



*Industrial Computing Platform Partner*

# **HSB-811P A0.1**

## **Temperature cycle Test Report**

**Report NO: 05I020001**

<b>Issued by:</b>	<b>Rex Chang</b> _____ <b>Engineer</b>	<b>/</b>	<b>01/13/2005</b> _____
<b>Reviewed by:</b>	<b>Wenyuan Yang</b> _____ <b>Manager</b>	<b>/</b>	<b>01/13/2005</b> _____

**HSB-811P A0.1**

**Test Date:** 01-07~13-2005

**Test Product:** HSB-811P (PCB Rev: A0.1 BIOS Rev: 0.1)

**Test Site:** AAEON QA Internal Lab.

**Performed By:** Rex Chang

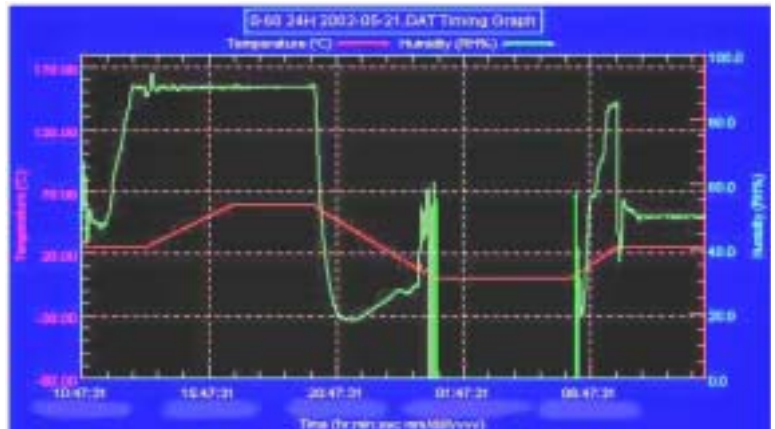
**Test Standard:** Reference IEC 68-2-30 Testing procedures  
 Test DB: Damp Heat Test  
 Reference IEC 68-2-61 Testing procedures  
 Test Z/ABD: Climatic Sequence Test

**Test Equipment:**  
 Programmable Temperature & Humidity Chamber  
 K.SON. INS. TECH. CORP.  
 Model: THS-A4C-100  
 Date of Calibration: 05/24/04  
 Serial Number: 3188

**Temperature & Humidity Power On/Off Test:  
 Testing Specification:**

Step	Temperature ( )	Humidity (%RH)	Duration (HH:MM)
1	25	50	00:30
2	25	50	00:30
3	25	90	01:00
4	25	90	00:30
5	60	90	03:30
6	60	90	03:00
7	0	0	04:50
8	0	0	05:23
9	25	50	01:47
10	25	50	03:00

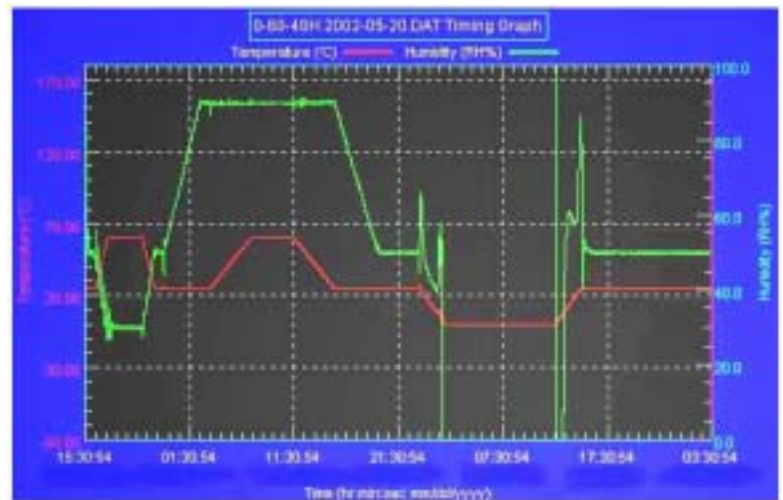
**Test Curve:**



**Temperature & Humidity Cycle Test:  
 Testing Specification**

Step	Temperature ( )	Humidity (%RH)	Duration (HH:MM)
1	25	50	00:30
2	25	50	00:30
3	60	30	01:10
4	60	30	03:20
5	25	50	01:10
6	25	50	00:50
7	25	90	03:30
8	25	90	01:00
9	60	90	03:53
10	60	90	04:07
11	25	90	03:53
12	25	50	04:07
13	25	50	03:30
14	25	50	00:30
15	0	0	02:30
16	0	0	10:30
17	25	50	02:30
18	25	50	00:30

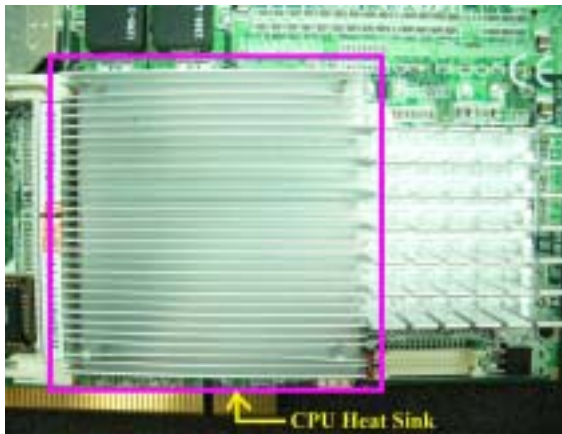
**Test Curve:**



## HSB-811P A0.1

### Sample Configuration & Quantity Under Test:

1. CPU: Onboard Intel Celeron M 600Hz CPU
2. Memory: 256MB ELPIDA DD2516AKTA-6B (DDR-333)
3. Chipset: Intel 82852GM + Intel 82801DB(ICH4)
4. VGA: Integrated on Intel 82852GM,AGP 4X, dual display support
5. LAN: Intel 82562EZ
6. CFD: PQI 32MB
7. HDD: West Digital WD800BB-00JHA0 80GB
8. CD-ROM: ASUS CD-520/A
9. Power Supply: Seventeam ST-300BLV
10. Backplane: BP-204SP-P3 A1.0
11. Test Software: Windows 2000 / Run HCT 9.5
12. CPU Heat Sink:



### Test Result :

**Passed.**